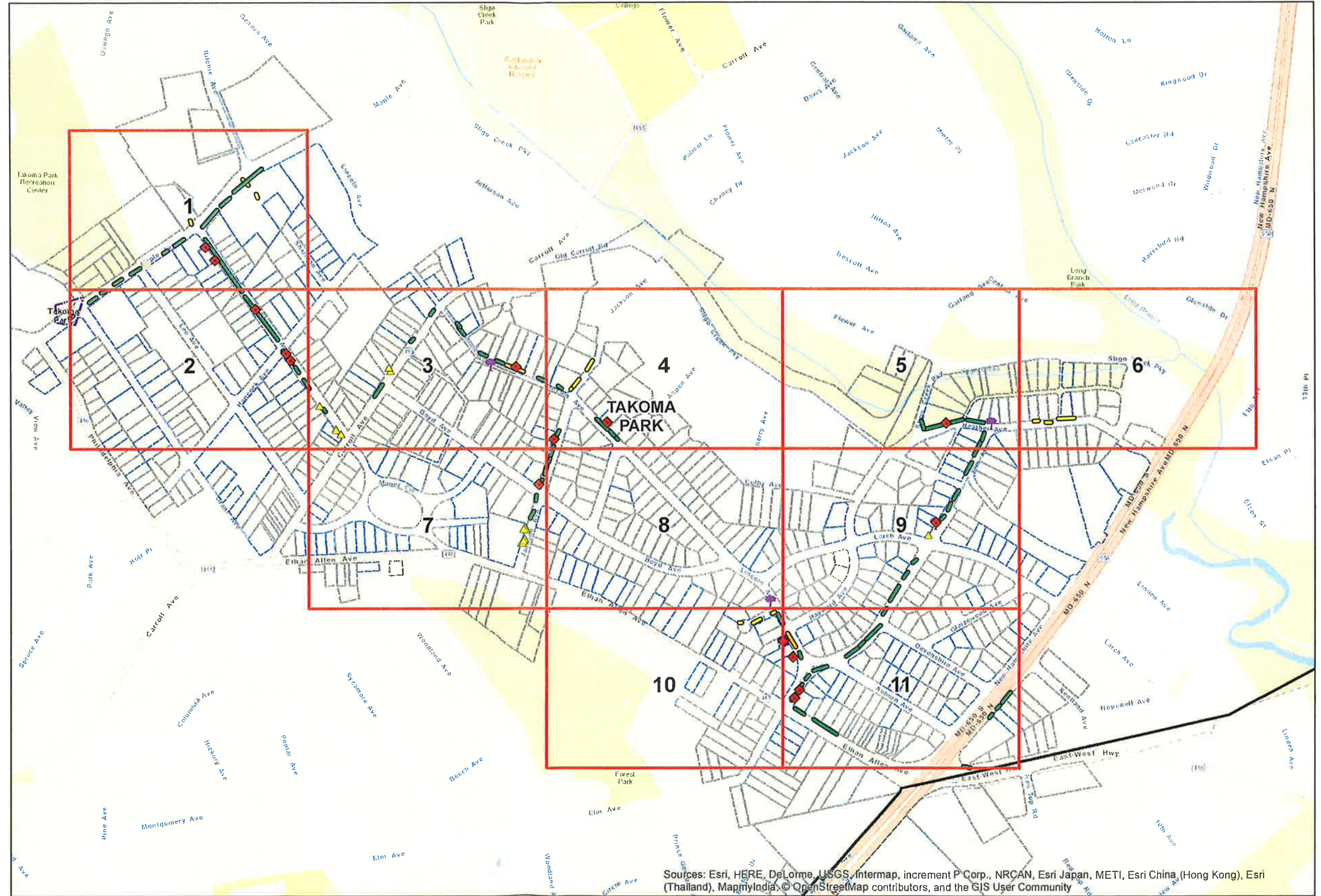




- MERTT
- ★ Helicopter
- Replacement Tree
- Special Attention ITAN
- Unit Complaint
- + TGR Tree
- ▲ RM 43 Mature Tree
- Access Route
- Road Centerline
- Sensitive Parcels
- Parcels
- Planner Notes
- Substation
- Transmission ROW
- Off Cycle Tree Risk**
- Engineer
- ← Heavy Prune
- ⊗ Line Crew
- ⊗ Removal
- ⊗ Resolved
- Removals**
- ◆ Complete Refusal
- ◆ Scope Modification
- ▲ Standard Removal
- Special Needs Tree**
- Complete Refusal
- Scope Modification
- SNL
- SNW
- None
- Vine Pole**
- RM
- PM
- Capital
- Comprehensive Work
- Linear Trim**
- Complete Refusal
- Scope Modification
- After FPD - Dist.
- Before FPD - Dist.
- Transmission Linear Trim
- Wall Trim**
- Complete Refusal
- Scope Modification
- After FPD - Dist.
- Before FPD - Dist.
- Transmission Wall Trim
- Main. Priority ITAN**
- Immediate Attention
- Work Not Required
- Work Required
- Brush**
- Complete Refusal
- Scope Modification
- Herbicide
- Cut Brush/ Hand Cut
- Mowing

- Transmission Structures**
- (Pole
- ▲ Transmission Tower
- Poles (Owner)**
- (ACE
- (BGE
- (Bell
- > CATV
- P Choptank
- P City of Wilmington
- P Customer
- (DPL
- (Electric
- > Foreign Electric
- (Pepco
- P Private
- > Railroad
- P State Highway
- (Unknown
- > Verizon
- Fuse (Status)**
- 3 Closed
- 3 Not Applicable
- 4 Open
- 3 Unknown
- Switch (Status)**
- Closed
- Not Applicable
- 5 Open
- 5 Unknown
- Recloser Bank (Status)**
- 6 Closed/Unknown/NA
- 6 Open
- Overhead Transmission/Distribution Lines**
- Phase 7
- Phase 6
- Phase 5
- Phase 4
- Phase 3
- Phase 2
- Phase 1
- Voltage 23
- Voltage 34.5
- Voltage 69
- Voltage 138
- Voltage 230
- Voltage 500



Sources: Esri, HERE, DeLorme, USGS, Intermap, increment P Corp., NRCAN, Esri Japan, METI, Esri China (Hong Kong), Esri (Thailand), MapmyIndia, © OpenStreetMap contributors, and the GIS User Community

