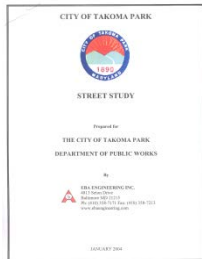


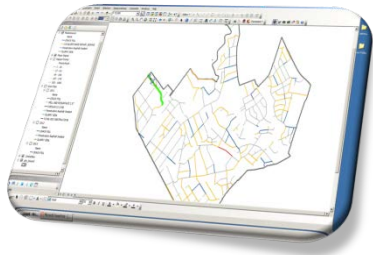


CITY OF TAKOMA PARK
STREET RENOVATION PROGRAM
OVERVIEW 2016

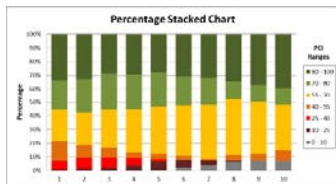
PAVEMENT EVALUATION STUDIES TO DATE



- **2003 Pavement Evaluation Study included traffic counts & pavement cores**



- **2011 Pavement Evaluation Study included Automated Video inspection and use of proprietary software**



- **2016 Pavement Evaluation Study used the same technology as 2011 and data was integrated into GIS**

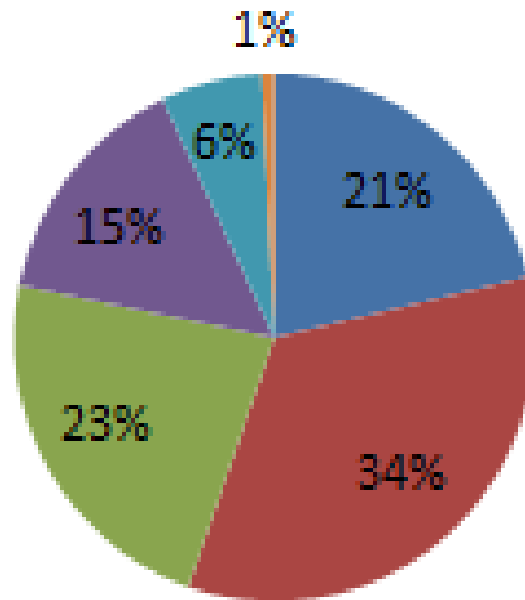
STREET CONDITION RATING

<i>PCI Number</i>	<i>Rating</i>
<i>100</i>	Excellent
<i>85</i>	Very Good
<i>70</i>	Good
<i>55</i>	Fair
<i>40</i>	Poor
<i>25</i>	Very Poor
<i>10-0</i>	Failed

- **Evaluations are primarily based on Pavement Condition Rating (PCI)**
- **PCI ratings are measures of pavement structural integrity & surface operational condition**

2016 STREET RATING BY CONDITION

■ Excellent ■ Satisfactory ■ Fair ■ Poor ■ Very Poor ■ Serious



STREET RESTORATION PROGRAM

MULTI-YEAR PLAN DEVELOPED BASED ON THE FOLLOWING CRITERIA:

Street Study Ratings

Ratings were verified and modified as pavement conditions deteriorate

Public safety and life-span considerations

i.e. traffic calming, traffic volumes, and expected deterioration

Logistical considerations

Clustering of work to optimize efficiency, scheduling & reduce mobilization cost

Other work planned

scheduled utility upgrades or CDBG projects, etc

Examples of Data Collected & Functionality of Software

eRoadInfo Pavement Condition Editor

Pavement Condition - OLD CARROLL AVE(115)

Inspection: 20110421_115 Create Delete

Distress: ALLIGATOR CRACKING Severity: Low Med. High

Quantity: 5 % 526 57Ft

Add/Update Delete Weather Map Video Report

PCI: 51 Copy Distress from Last Segment

DistressID	Severity	Quantity	Percent	ModifiedBy	ModifiedOn
RAVELING	Medium	263	5.0%	NGALBANI	8/25/2011
POTHOLE	High	1	.0%	DKEBEDE	8/29/2011
ALLIGATOR CRACKING	Medium	526	5.0%	DKEBEDE	8/29/2011
WEATHERING	Medium	9,472	90.0%	DKEBEDE	8/29/2011

Sug. Repair: MILL AND RESURFACE 4" % \$32,743.7

Override: NO OVERRIDE

Priority: 19 Override: 0

Segment Info. Work Notes

Length (Ft): 438.5 Area: 10,524.8 +/- 0 Lanes: 2 Copy Seg Info

Width (Ft): 24 Copy Func. Class: Unknown

Surface: 2 Asphalt Thick/Note: 0

Base: AC,PM Thick/Note: 0

Surf Treat: in Contr: 1/ 1/1900

From: OLD CARROLL AVE From MP: 0

To: CARROLL AVE To MP: 0

Route ID: Division:

	Shoulder	Curb	Condition	Sidewalk	Width	Condition	Priority
N/W:	A Unknown	N/A	9 Unknown	0	N/A	0	0
S/E:	A Unknown	N/A	9 Unknown	0	N/A	0	0

2011_0421_1617_58337

0	1/6
1	0.0004
3	-1.0001
4	0.0041
5	0.0040
6	0.0053
7	0.0062
8	0.0071
9	0.0082
10	0.0092
11	0.0121
12	0.0124
13	0.0180
14	0.0222
15	0.0275
16	0.0328
17	0.0370
18	0.0419
19	0.0471
20	0.0515
21	0.0532
22	0.0577
23	0.0603
24	0.0641
25	0.0690
26	0.0733
27	0.0758
28	0.0799

Click on feature's ground location: 16.7 ft (5.10m) forward, 5.10 ft (1.56m) right, Angle: 2.44 1312160.67, 479182

Click on the starting point: 33.6 ft (10.25m) forward, 22.53 ft (6.87m) right, Angle: -180.6; 1312336.03, 471026

1311992.961 479205.052 Feet

Start | Novel Groupwise... | Windows Search | IN USE FILES | Microsoft PowerPoint... | Mac_Pavement - Ac... | Camera 1 | Camera 2 | Camera 3 | Camera 5 | Unclod - Paint | 5:53 PM

Alligator Cracking
Edge Cracking
Utility Cut
Shoving

Bleeding
Joint Reflection Cracking
Polished Aggregate
Slippage Cracking

Block Cracking
Lane Shoulder Drop
Pothole
Swell

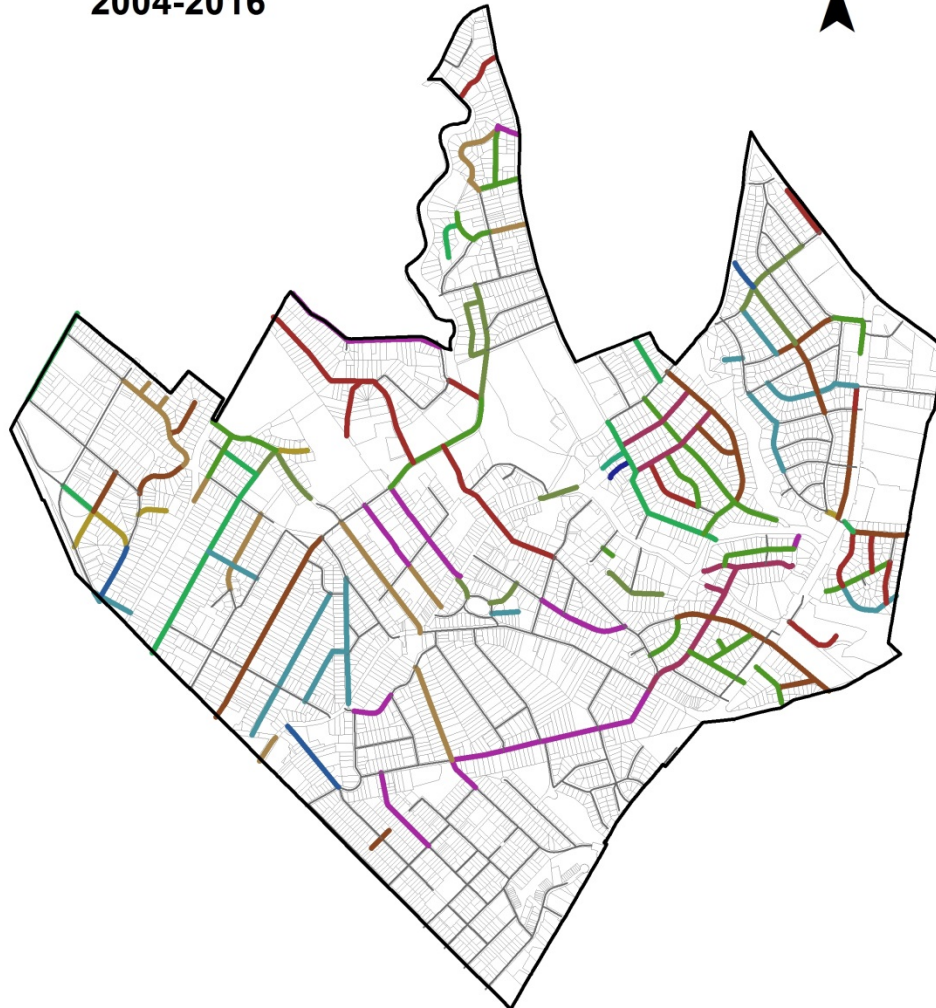
Bumps/Sag
Cracking
Railroad Crossing
Raveling

Corrugation Depression
Patching
Rutting
Weathering

STREET RESTORATION 2004 - 2016

- 18.91 Street Miles Restored
 - Total expenditures \$6,200,000*
 - Cost Per Mile \$330,000
-
- Funding sources included State Bond, County grants, CDBG projects, annual Capital Funds and utility contributions.
 - Per year expenditure approximately \$480,000

STREET RESURFACED 2004-2016

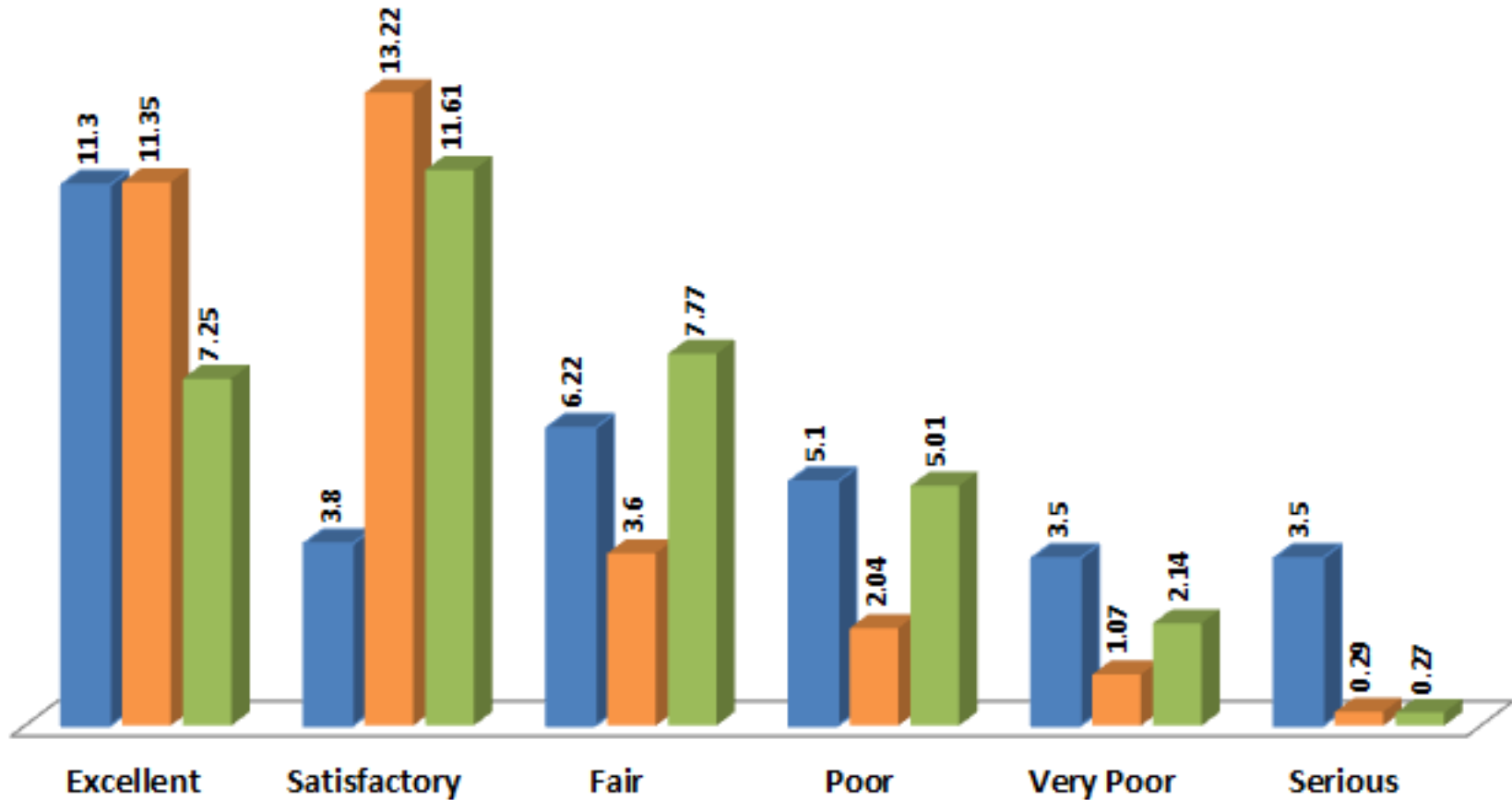


YEARS

- | | | | |
|----------------------|--------|--------|--------|
| — <all other values> | — 2007 | — 2011 | — 2015 |
| — 2004 | — 2008 | — 2012 | — 2016 |
| — 2005 | — 2009 | — 2013 | |
| — 2006 | — 2010 | — 2014 | |

COMPARISON OF STREET RATINGS IN 2003, 2011 & 2016

■ Miles 2003 ■ Miles 2011 ■ Miles 2016



COMPARISON OF STREET RATINGS REVISED FOR WSSC PAVING

