



City of Takoma Park
City Manager's Office

American Rescue Plan Act (ARPA) Spending Plan Update

Jamal T. Fox, MPA
City Manager
September 8, 2021

What is ARPA?

How much funding has our city received?

- Signed into law **March 11, 2021**, providing direct relief to all local governments with an \$350 Billion-dollar allotment for the Coronavirus State and Local Fiscal Recovery Funds.
- The City of Takoma Park will receive our **\$17.4 million-dollar tranche** through the State of Maryland because we are considered a non-entitlement city with a population below 50,000.
- The first \$8.7 million-dollar tranche of funding was received July 12th, and the second will be received a year from now in 2022.
- **We have until 2024 to encumber** (identify projects/initiatives) the funds and two more years through **2026 to fully expend all funds.**
- By the end of **October every year** beginning this year in 2021, we have mandatory reporting that we must submit to the federal Treasury to remain in compliance.



What can ARPA funding be used for in Takoma Park?

- Responding to the COVID-19 pandemic
- Covering costs incurred from responding to the public health emergency
- Replacing lost, delayed, or decreased revenues due to COVID-19
- Addressing the negative economic impacts on households, local businesses and nonprofits
- Making necessary investments in water, sewer, stormwater, and broadband infrastructure



What are the Expenditure Categories?

Public Health/ Negative
Economic Impacts/
Disproportionately
Impacted Communities

Premium Pay for
essential workers during
COVID-19

Infrastructure: Water,
Sewer, Stormwater, and
Broadband

Public Sector Revenue
Loss/ Administrative

Recent Council Actions

ARPA Funding Use	Council Action	FY22	Est. FY23-FY27
Revenue Loss Reimbursement	FY22 Adopted Budget	\$ 1,191,900	TBD
Façade Improvement Grant	FY22 Adopted Budget	\$ 8,000	TBD
Document Management Platform	FY22 Adopted Budget	\$ 100,000	TBD
IT Software Developer	FY22 July Budget Amendment	\$ 120,000	\$ 360,000
ARPA Coordinator	FY22 July Budget Amendment	\$ 120,000	\$ 360,000
Payroll & Accounting Specialist	FY22 July Budget Amendment	\$ 75,000	\$ 225,000
Emergency Rental Assistance	FY22 July Budget Amendment	\$ 250,000	TBD
Food Insecurity RFP	FY22 July Budget Amendment	\$ 250,000	TBD
Community Engagement	FY22 July Budget Amendment	\$ 100,000	TBD
TOTAL ALLOCATED		\$ 2,214,900	\$ 945,000
TOTAL REMAINING OUT OF \$17.4 MILLION		\$	14,240,100



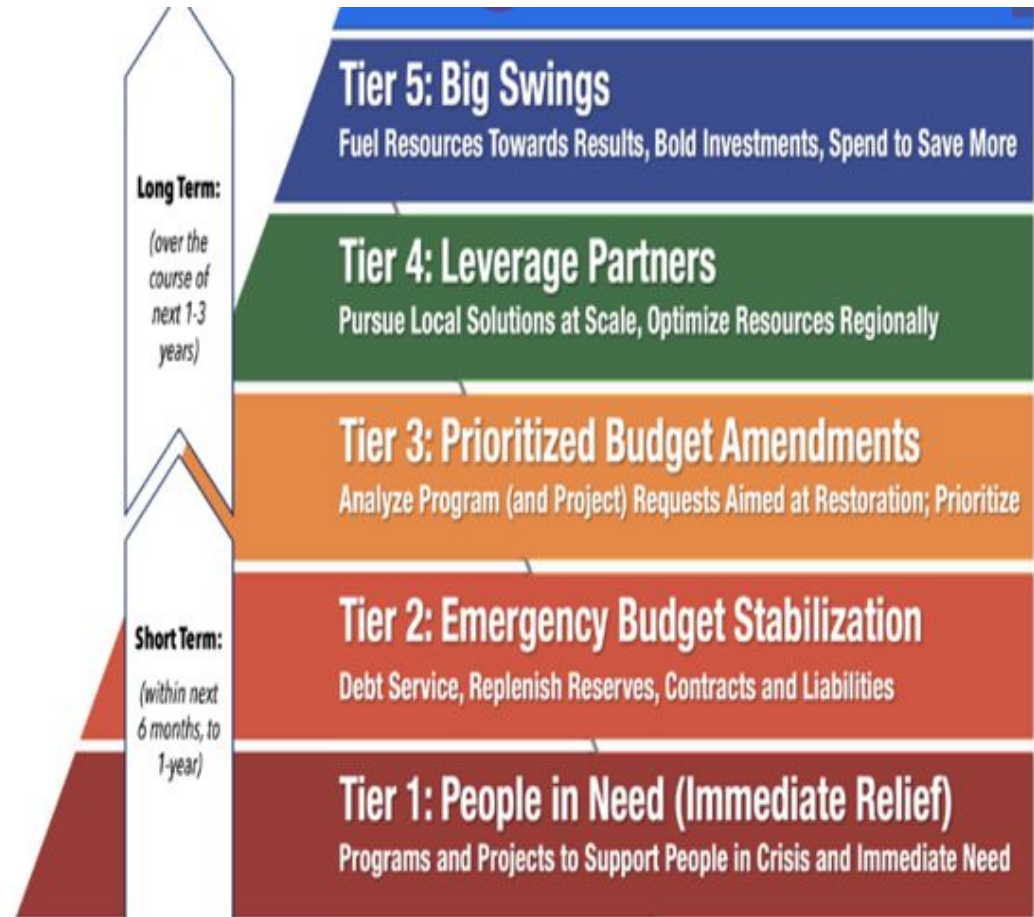
Prioritization of ARPA One-Time Funding

■ Short-Term

- Tier 1: Immediate Relief
- Tier 2: Emergency Budget Stabilization
- Tier 3: Budget Amendments

■ Long-Term

- Tier 4: Leverage Partners
- Tier 5: Big Investments



“A Resilient Takoma Park”

- Create a plan called “*A Resilient Takoma Park*” with a focus on 5 key areas:
 - **Community Services**
 - **Equity**
 - **Economic Development**
 - **Sustainability and Climate Change**
 - **Public Safety**
- Long-term, comprehensive, structural solution to funding City services and supporting the community
- Redesign and oversee the process for engaging the community through funding packages that align with the City’s long-term vision.
- *The City of Takoma Park is an open and welcoming community, “A City of Opportunity” for all.*
- *Mantra: “One City, One Community, One Takoma Park”*



ARPA Implementation Plan

- **Already Completed:**
 - **Request and receive ARPA Funds from Treasury**
 - **Mayor and City Council approval of \$2,214,900 in ARPA funding for immediate community needs and administrative structure/tracking**

- **Current Steps:**
 - **Recruit and Hire ARPA Manager (position already posted)**
 - **Outreach to departments to identify priority need for ARPA funding**
 - **Development of an community engagement strategy & community outreach**
 - **Review ARPA Expenditure & Implementation Plan with Senior Leadership Team Workshop**
 - ✓ **Development of Census Data Explorer to identify most vulnerable residents**
 - **Mayor & City Council direction on ARPA Expenditure & Implementation Plan**

- **Next Steps:**
 - **Confirm eligible expenditures**
 - **Identify and evaluate top- priority items**
 - **Mayor and City Council approvals for use of funding as needed**



Census Data Explorer Tool

This tool allows the Senior Leadership team to explore 2015-2019 American Community Survey data that can be cited to fulfill ARPA reporting requirements. The beta version of this tool is in development as part of the SLT ARPA Workshop and will be available for public release soon.

Takoma Park Data Explorer

About. This is a webpage for exploring selected Census data on Takoma Park from the [2015-2019 American Community Survey](#). Each heading tab opens to a "Summary" sub-tab; click on other sub-tabs to see data-visualizations and detailed explanations. All graphics are interactive; you can click and double-click on legend items to hide or show them, and mousing over graphics will show data-values. Race and ethnicity data are consolidated in the "Race and Ethnicity" tab, and repeat in each subject-area heading tab (e.g., race/ethnicity housing data can be found in the "Housing" sub-tab of the "Race and Ethnicity" heading-tab, as well as in the "Housing" heading-tab). The "Methodology" tab describes data sources and statistical significance. Code used to produce this webpage can be found on the [City's Github page](#). Similar web-maps can be found in the [City's interactive demographic map](#) and in the [City's Social Vulnerability Index maps](#).

Please send any questions, comments, or feedback to Public Administration Specialist Dan Powers at danielp@takomaparkmd.gov.

Overall

Demographics

Race and Ethnicity

Housing

Poverty, employment, and income

Education, health insurance, and computer-access

Methodology

Summary

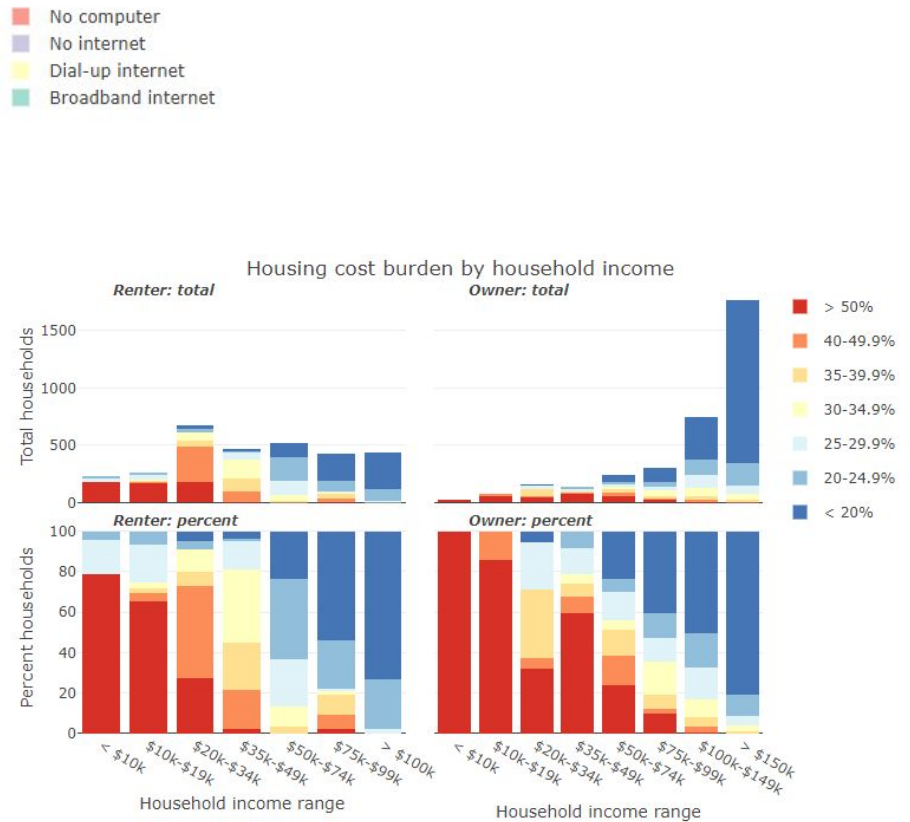
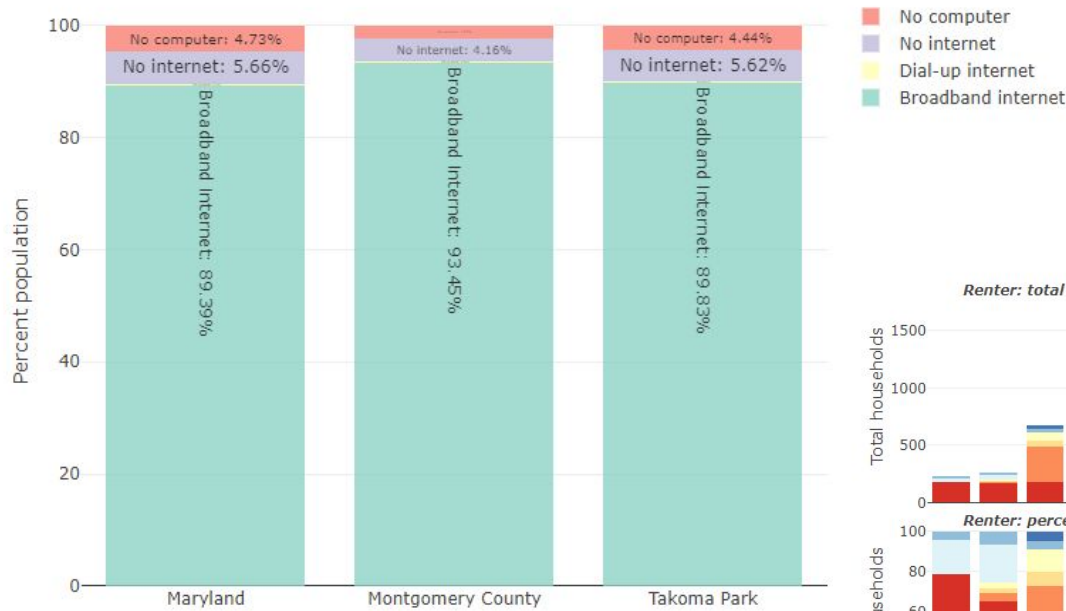
Income

Poverty

Unemployment

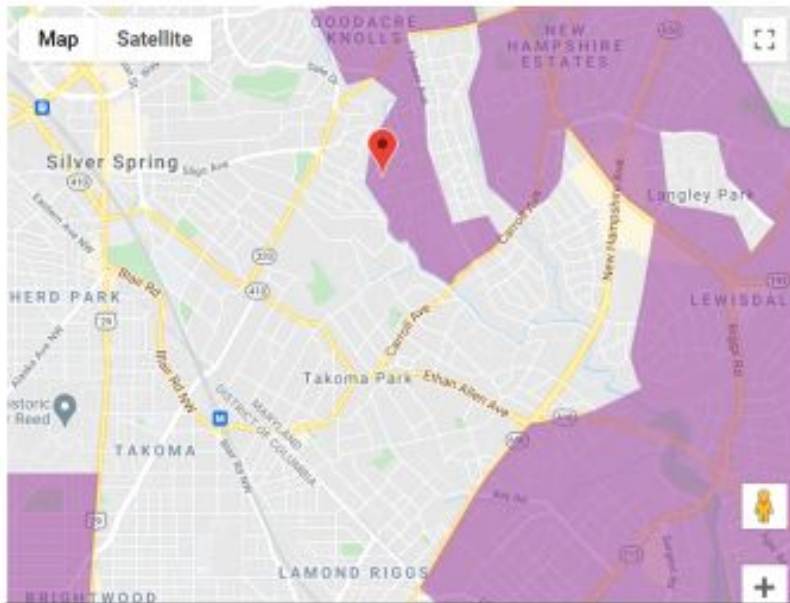
Census Data Explorer Tool - Examples

Internet access by location

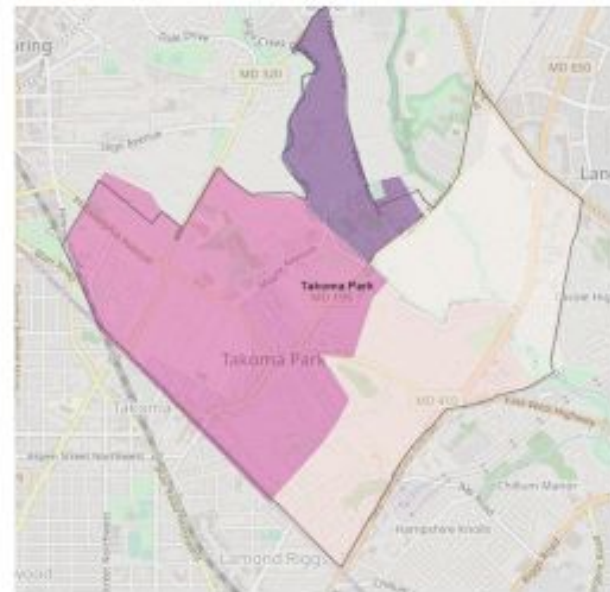


CDC Social Vulnerability Map & Qualified Census Tracts

Determining Eligibility



- Qualified Census Tract 7017.02 which covers most of Ward 5 and 7020 which is mostly outside the City but overlaps with the corner of Ward 6
- Social Vulnerability Index Map



Have suggestions for ARPA spending?

**Email your ideas to the email address below
as our virtual suggestion box for the incoming
ARPA Manager to review:**

ARPA@takomaparkmd.gov

