

The background features abstract, overlapping green geometric shapes in various shades of green, creating a modern and organic feel. The shapes are primarily located on the left and right sides of the page, framing the central text.

City of Takoma Park Annual Urban Forest Report

Marty Frye
Urban Forest Manager

Contents

1. Urban Forest Condition Summary and Planting Numbers
 2. Permits and Removals
 3. City Efforts to Achieve Canopy Goals: Tree Planting
 4. Urban Forest Manager Recommendations
 5. Education and Outreach
 6. Fees, Fines, and the Tree Fund
 7. Native Trees
- Bonus – Urban Forest Master Plan

1. Urban Forest Condition and Planting Numbers

- ▶ The City has a robust tree canopy.
- ▶ Oak decline is still a problem, though the rate of loss seems to be slowing.
- ▶ We are monitoring other potential insect and disease concerns.
- ▶ Renovations and other buildings projects have boomed since 2020, highlighting the need for good tree protection.
- ▶ Tree planting, preservation of existing trees, and maximizing tree and soil health to increase canopy growth are important as ever.

1. Urban Forest Condition

Tree Removal Permits for Oaks determined to be Dead or Hazardous

Row Labels	BLACK OAK	CHESTNUT OAK	NORTHERN RED OAK	PIN OAK	POST OAK	SCARLET OAK	SOUTHERN RED OAK	WHITE OAK	WILLOW OAK	Grand Total
FY21	24	72	19	8	2	11	15	110	7	268
FY22 (Projected)	20	34	11	14	1	6	13	81	2	182
	17% Decrease	53% Decrease	42% Decrease	75% Increase	50% Decrease	45% Decrease	13% Decrease	26% Decrease	71% Decrease	32% Decrease

1. Urban Forest Condition

Tree Removal Permits for Oaks determined to be Dead or Hazardous

Row Labels	BLACK OAK	CHESTNUT OAK	NORTHERN RED OAK	PIN OAK	POST OAK	SCARLET OAK	SOUTHERN RED OAK	WHITE OAK	WILLOW OAK	Grand Total
FY21	24	72	19	8	2	11	15	110	7	268
FY22 (Projected)	20	34	11	14	1	6	13	81	2	182
	17% Decrease	53% Decrease	42% Decrease	75% Increase	50% Decrease	45% Decrease	13% Decrease	26% Decrease	71% Decrease	32% Decrease

Not at the end of the tunnel yet, but this is positive news

1. Tree Planting Numbers: Totals

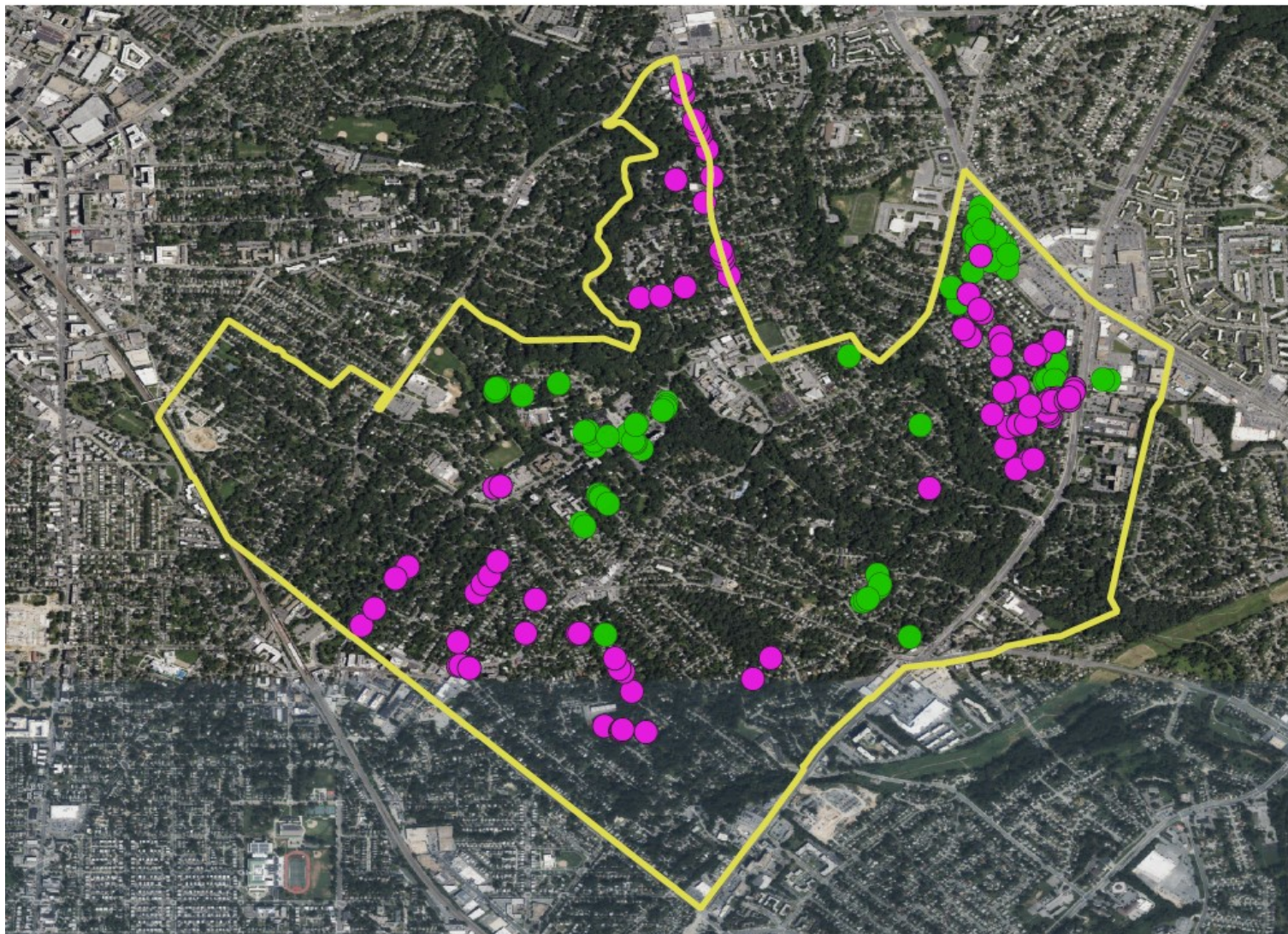
Tree Planting Totals		
	FY21	FY22
Public Space Trees Planted	67	87
'Plant-a-Tree' Trees Planted	88	85
'Pilot Planting Program' Trees Planted	N/A	39
Removal Permit Replacement Trees	126	98

1. Tree Plantings Numbers: Species

Plant-a-Tree and Pilot Planting Program Species		
	FY21	FY22
American Linden	7	10
Bald Cypress	7	6
Black Gum	22	41
London Plane	2	0
River Birch	9	17
Southern Magnolia	25	5
Swamp White Oak	10	25
Sycamore	4	10
Willow Oak	2	3
Red Maple	0	4
Yellowwood	0	3

Public Space Species		
Species	FY21	FY22
Alternate Leaf Dogwood	0	1
American Hornbeam	11	9
American Linden	6	11
American Sycamore	0	9
Bald Cypress	6	4
Blackgum	1	7
Eastern Redbud	1	10
Flowering Cherry	1	8
Hop Hornbeam	5	0
Serviceberry	1	4
Swamp White Oak	22	25
Sweetbay Magnolia	13	0

Public Space Plantings

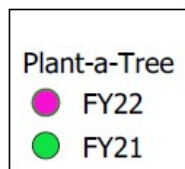
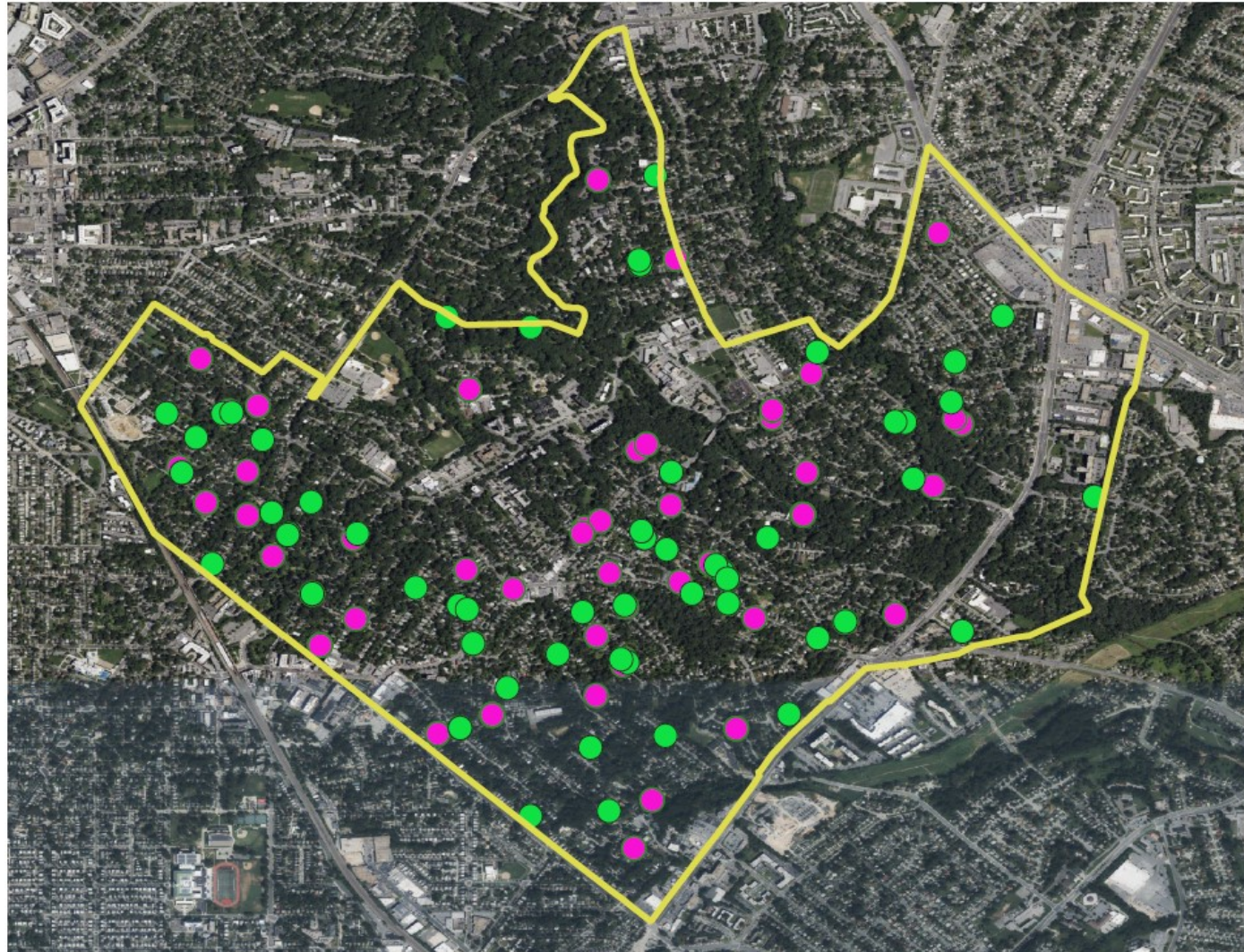


Planting Season

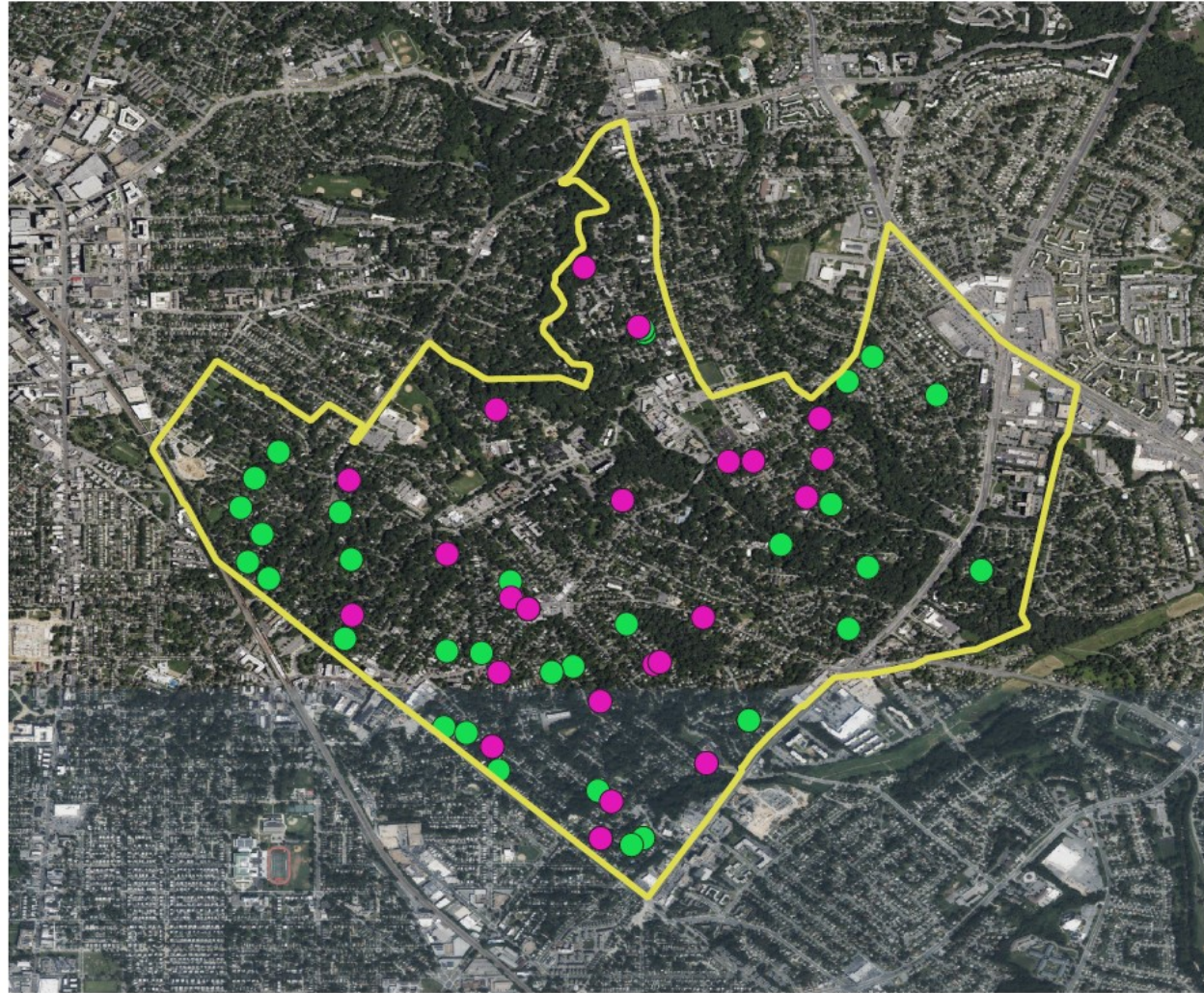
● FY22

● FY21

Plant-a-Tree



Replacement Plantings



Replacement Planting

● FY21

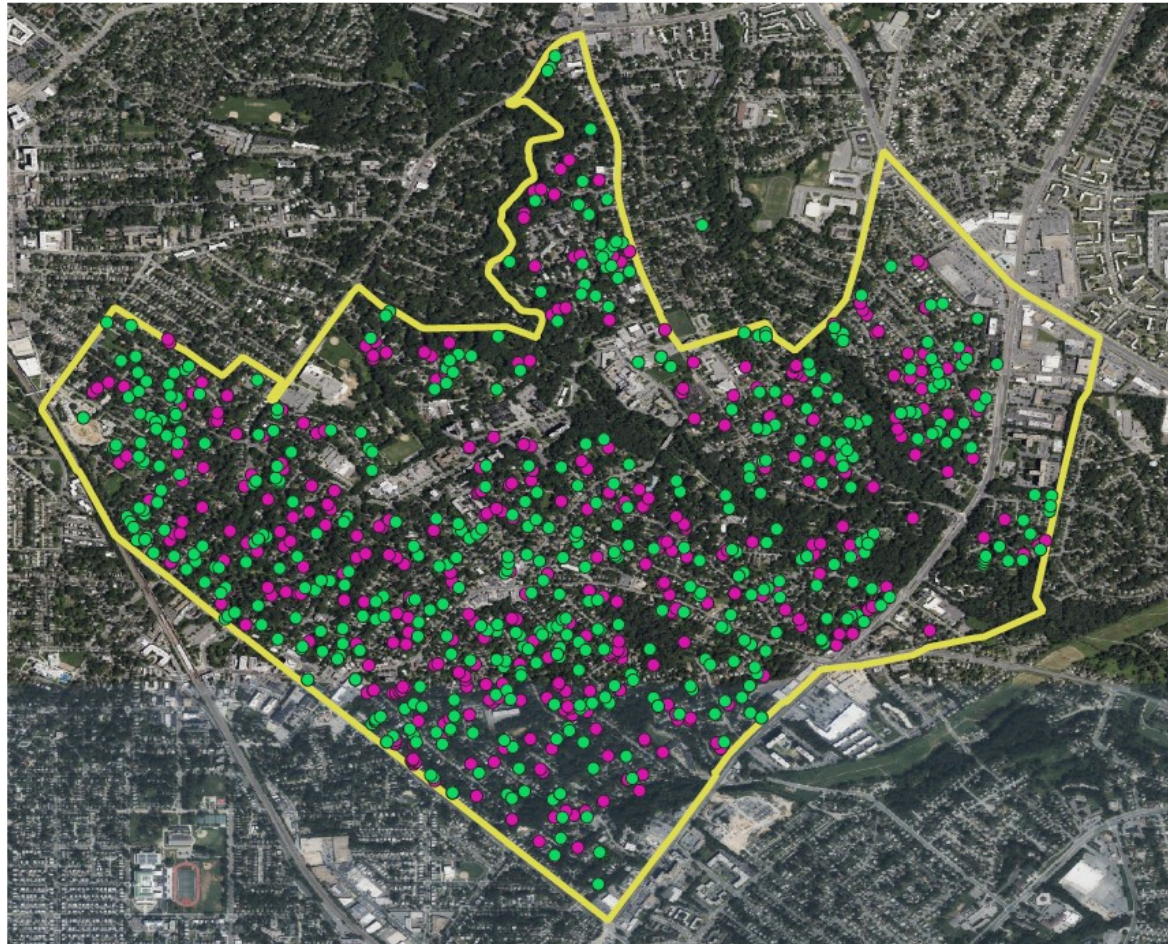
● FY22

2. Permits

Tree Removal Permits	FY21	FY22 (through 6/6/22)
Dead/Hazardous Permitted	538	355
Permit Issued	95	98
Eligible for Permit / In Progress	29	51
Denied	15	3
No Permit Required	28	21
Withdrawn	35	21
Total	740	549

TIA and TPP	FY21	FY22 (through 6/6/22)
Tree Impact Assessments	152	136
Tree Protection Plan Permit Applications	58	37

Permitted Private Property Removals



TRP Removals

● FY21

● FY22

2. City Removals and Pruning

City Tree Work	FY21	FY22 (through 6/6/22)
City Trees Removed	47	66
City Trees Pruned	21	28

City Removals and Pruning



Removals and Pruning FY22

● pruning

● removal

2. Tree Commission Permit Appeals

- ▶ 434 Ethan Allen Ave - Preliminary approval of Tree Removal Permit and Tree Protection Plan Permit were both appealed by neighbors. The Tree Commission upheld the approvals, with the condition that the applicant secure their Stormwater Management Permit and post bond equal to the replanting requirement.
- ▶ 7205 Flower Ave - The City's denial of a Tree Removal Permit was appealed by the applicant. The Tree Commission upheld the City's decision to deny the permit.

3. City Efforts to Achieve Canopy Goal

- ▶ The City's canopy goal is to achieve no net loss and maintain 58% cover.
- ▶ All aspects of the City's Urban Forest program work towards this goal.
- ▶ This report focuses on the City's new tree planting efforts on private property.

3. City Efforts: Pilot Planting Program

- ▶ Program Design:
 - ▶ Provide free trees to low canopy property types in the City.
 - ▶ Experiment with direct outreach to apartment buildings, condominiums, commercial, and institutional properties.
 - ▶ Experiment with providing on-site tree planting consultations to properties.
- ▶ Results:
 - ▶ Conducted direct outreach to thirty-one properties
 - ▶ Conducted site visits with seven properties
 - ▶ Drafted six planting plans, two of which were cancelled close to deadline.
 - ▶ Planted thirty-nine trees at four properties.

3. City Efforts: Pilot Planting Program

► What We Learned

- Direct outreach was an effective tool in establishing a personal relationship with properties.
- Branding and marketing a program that is restricted only to certain properties was somewhat challenging. A program available to all properties in the City would be significantly easier to publicize.
- Professional on-site consultations were very valuable, though challenging to administer at scale with in-house staff.

3. City Efforts: Pilot Planting Program

Hilltop Condominiums
Spring 2022 Tree Planting
7716 Maple Avenue
Takoma Park, MD

- 1 - Red Maple
- 2 - Red Maple
- 3 - Red Maple
- 4 - Red Maple
- 5 - Blackgum
- 6 - Blackgum
- 7 - Bald Cypress
- 8 - Bald Cypress
- 9 - Blackgum
- 10 - Willow Oak



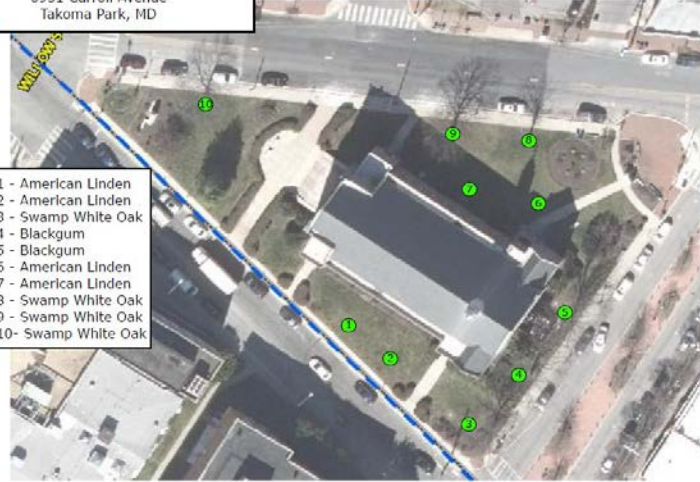
Takoma Langley Crossroads Retail Center
7609 New Hampshire Ave
Spring 2022 Tree Planting

- 1 - Black Gum
- 2 - River Birch
- 3 - River Birch
- 4 - River Birch
- 5 - River Birch
- 6 - Black Gum
- 7 - Black Gum
- 8 - Black Gum
- 9 - Yellowwood
- 10 - Yellowwood



Takoma Park Seventh Day Adventist Church
Spring 2022 Tree Planting
6951 Carroll Avenue
Takoma Park, MD

- 1 - American Linden
- 2 - American Linden
- 3 - Swamp White Oak
- 4 - Blackgum
- 5 - Blackgum
- 6 - American Linden
- 7 - American Linden
- 8 - Swamp White Oak
- 9 - Swamp White Oak
- 10 - Swamp White Oak



Peak Health Care
Spring 2022 Tree Planting
7525 Carroll Ave
Takoma Park, MD

- 1 - Yellowwood
- 2 - Willow Oak
- 3 - Blackgum
- 4 - Blackgum
- 5 - Blackgum
- 6 - American Linden
- 7 - American Linden
- 8 - American Linden
- 9 - Blackgum



3. City Efforts: New Private Property Planting

► Key goals:

- Reduce/eliminate financial barriers to tree planting on private property.
- Maximize property owner and resident interest in canopy tree planting.
- Plant a large number of high-quality native canopy trees in good locations where they will thrive.
- Build a strong brand for a tree planting program that all residents are familiar with and feel drawn to participate in.
- Make tree planting easily available to all private properties, while especially encouraging and facilitating participation from lower-canopy property type categories, including multi-family residential, commercial, and institutional properties.
- Do all this in a manner that does not over-stretch staff resources.

3. City Efforts: New Private Property Planting

- ▶ Program design elements to achieve these goals -
 - ▶ Work with a contractor who can provide professional on-site consultations
 - ▶ Work with a contractor who has a strong reputation for quality tree planting and customer service.
 - ▶ Plant up to 10 trees per property and budget for up to 150 trees per year.
 - ▶ Provide this service at no cost to the property.
 - ▶ Work with our Communications team to build a strong brand and conduct an effective outreach campaign for the program.
 - ▶ Work with Planning, Housing, and Community Development team and other stakeholders to identify avenues for targeted outreach to multi-family residential, commercial, and institutional properties.

3. City Efforts: New Private Property Planting

▶ Time Line

- ▶ We are preparing to announce the Request for Proposal for this contract.
- ▶ We hope to secure a contract by the end of the summer.
- ▶ Outreach and promotion will begin in late summer.
- ▶ We hope to conduct first plantings in mid to late fall.

The private property pillar of the City's canopy planting efforts

4. Urban Forest Manager Recommendations

Invest in a geospatial asset and work-order management platform to:

- ▶ Track inspections of City trees
- ▶ Track upcoming and recent tree plantings
- ▶ Catalog available planting locations
- ▶ Manage and assign tree maintenance work to in-house crew and contractors
- ▶ And, aspirationally, create a tree inventory over time.

5. Education and Outreach

Key activities and updates

- ▶ The Approved Tree Species List was published in January 2021.
 - ▶ Only native species.
 - ▶ Clearer guidance for Tree Removal Permit applicants
 - ▶ Transparency on the City's species palette for public space planting
- ▶ Major overhaul of Urban Forestry webpage underway, expected to be complete by the end of the first quarter of FY23
- ▶ Successful Arbor Day event, including participation from three community groups and a tree walk led by the UFM.

6. Fees, Fines, and Tree Fund

	FY21	FY22 (through 6/6/22)
Citation Payments	\$1500	\$2184
Tree Removal Permit Fee-in- Lieu Payments	\$34,872	\$87,672
Forfeited Security Bonds	0	0

6. Tree Fund

- ▶ The Tree Fund currently holds a balance of \$200,350.
- ▶ The expected rate of accumulation from fee-in-lieu payments and citations is \$40,000 per year.
- ▶ For FY23, we are increasing allocation of Tree Fund from \$25,000 to \$45,000 for public space and private property planting.
- ▶ We will review again next year and determine if the Tree Fund allocation towards tree planting should be increased further.

7. Native Tree Percentage

- ▶ The native tree percentage across all public space plantings and private property planting programs was 99% for FY21 and 96% for FY22
- ▶ Non-native trees were only planted as replacements for street cherry trees that had died after their warranty period had expired.

The background of the slide features abstract, overlapping green geometric shapes, primarily triangles and polygons, in various shades of green, creating a modern and dynamic visual effect.

Annual Report Complete

On to a brief overview of the
Draft Urban Forest Master Plan

Urban Forest Master Plan

► Guiding principles for this plan

- Account for the unique conditions trees and forests contend with in the urban environment.
- Maximize tree health and tree canopy cover for the benefit of all.
- Collaborate with the community to plant trees where they are wanted and needed most.
- Understand and work with the many stake holders with interests at play

Urban Forest Master Plan

1. Public Space Planting
2. Private Property Tree Planting
3. Public Space Tree Management
4. Private Property Tree Regulations
5. Tree Care Education and Outreach
6. Urban Forest Monitoring and Evaluation

1. Public Space Planting

- ▶ Plant 100 trees in public space per year.
- ▶ Plant in street locations, parks and City properties
- ▶ Define the prioritization factors that the City uses when determining tree planting locations.
- ▶ Provide avenues for resident and property owner input on tree plantings.

2. Private Property Tree Planting

New Tree Planting Program!

- ▶ Provide native canopy trees at no cost to property
- ▶ Provide on-site tree planting consultation at no cost to property
- ▶ Plant 150 trees per year
- ▶ Publicize the program broadly to all properties across the City
- ▶ Conduct targeted outreach to low-canopy property types, including multi-family residential, commercial, and institutional properties

3. Public Space Tree Management

- ▶ Mitigate hazardous tree situations
- ▶ Prune trees for appropriate clearance
- ▶ Coordinate with agencies and utility companies that work in public space to achieve the best possible urban forest health outcomes.
- ▶ Oversee tree protection on City projects.

4. Private Property Tree Regulations

- ▶ Tree Removal Permit
- ▶ Tree Impact Assessment and Tree Protection Plan Permit
- ▶ Prohibit hazardous trees from remaining
- ▶ Prohibit vines from smothering on trees

5. Tree Care Education and Outreach

High-priority topics:

- ▶ Importance of tree planting
- ▶ How to maintain and improve soil health
- ▶ Tree protection

Education and Outreach Techniques:

- ▶ Maintain an informative Urban Forestry webpage
- ▶ Respond to resident tree questions
- ▶ Provide on-site consultations through the new tree planting program, via contractor
- ▶ Host an annual Arbor Day event, and other events as time allows
- ▶ Publish newsletter articles and media content.

6. Urban Forest Monitoring and Evaluation

- ▶ Maintain robust digital record systems.
- ▶ Create an inventory of available planting locations.
- ▶ Conduct periodic urban tree canopy analysis using remote sensing technology.

Thank You!

Marty Frye

Urban Forest Manager

301-891-7612

UrbanForestManager@TakomaParkMD.gov