



New Ave Bikeway, Section D – District Connector 30% Design



City Council
Presentation
July 12, 2023





Good Evening and Welcome

- New Ave Bikeway Section D – *District Connector*
- Preliminary (30%) Design
 - City sponsored project
- Funding for 30% Design
 - TLC Technical Assistance Grant





Project Goals

- Low-stress, safe, enjoyable bikeway
- City's southern-most bikeway connection to DC:
 - Poplar Avenue to District of Columbia
- Avoid impacts to property, environmental resources and utilities
- Identify Stormwater Management requirements



30% Design Approach

- Utilize low-speed, low-volume neighborhood streets

- Key Facility Types

- Sharrows (shared lanes)
- Shared-use Path (SUP)



- Evaluate two (2) routes with City

- Select route for survey and preliminary engineering

- Stakeholder Collaboration

- City of Takoma Park (Planning, Public Works and the Community)
- Montgomery Planning Staff (M-NCPPC)
- Utility Owners



Alignment Selection

**NEW AVE BIKEWAY,
Section D LIMITS**

Poplar Avenue
to
DC Line

- Alignment Option 1:**

Poplar – 4th Ave – Westmoreland Ave – Kansas Ln

- Alignment Option 2:**

SB NH Ave – Sligo Mill Conservation Area – Sligo Mill Rd – Westmoreland Ave “Paper Street” – Kansas Ln



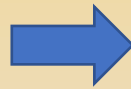


Alignment Selection

Selected Alignment Option 1

Alignment Option 2: *not selected*

Requires significant impacts for 350 feet of bikeway alignment along southbound New Hampshire Avenue



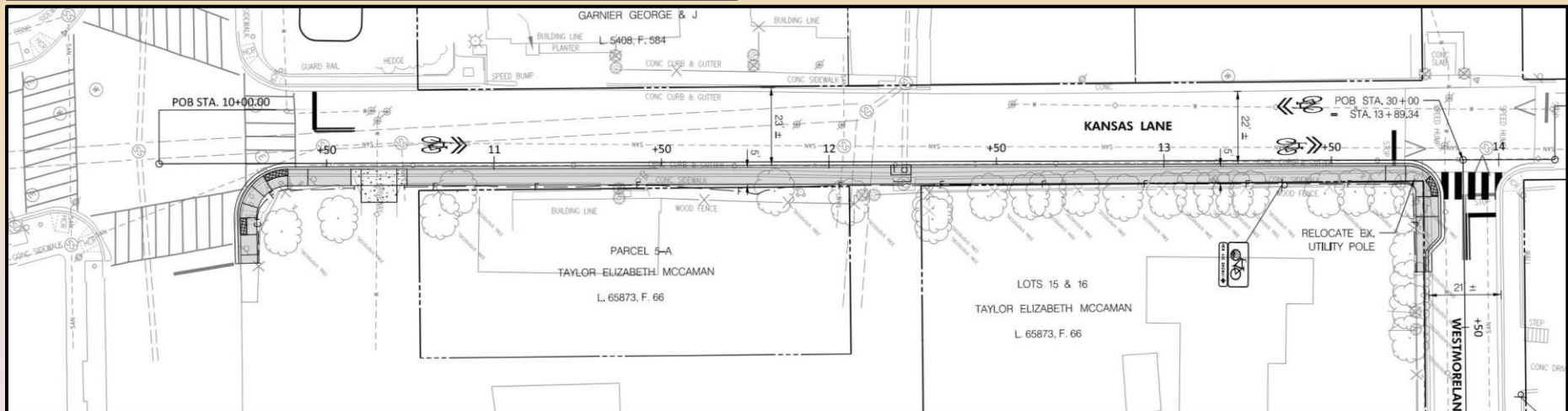
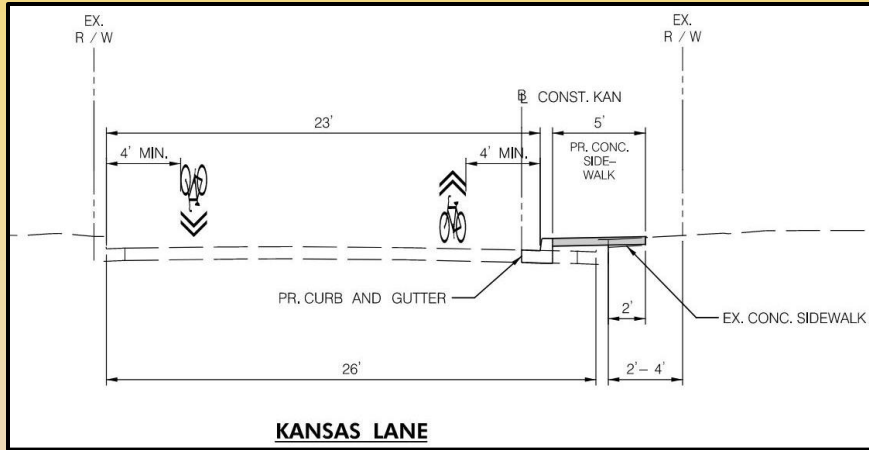


30% Design

New Ave Bikeway, District Connector

Kansas Lane: *Eastern Ave to Westmoreland Ave*

- Sharrows, 5' wide sidewalk (east side)



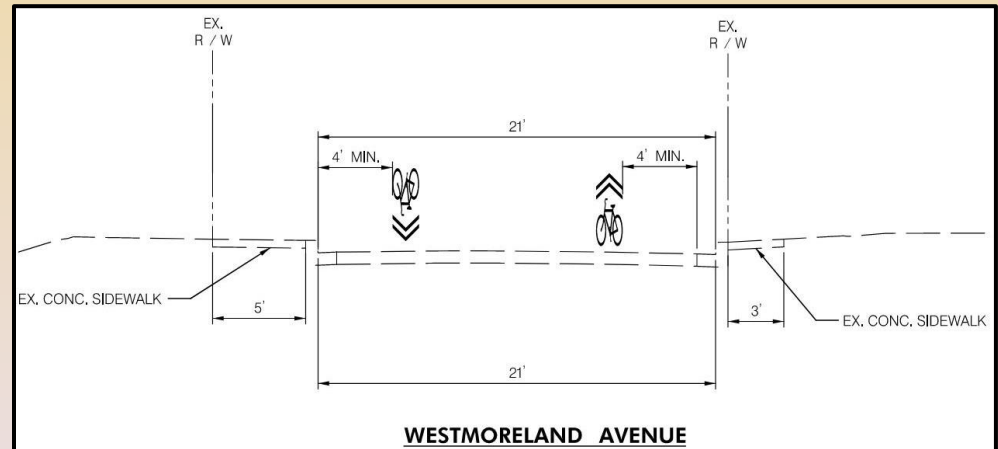
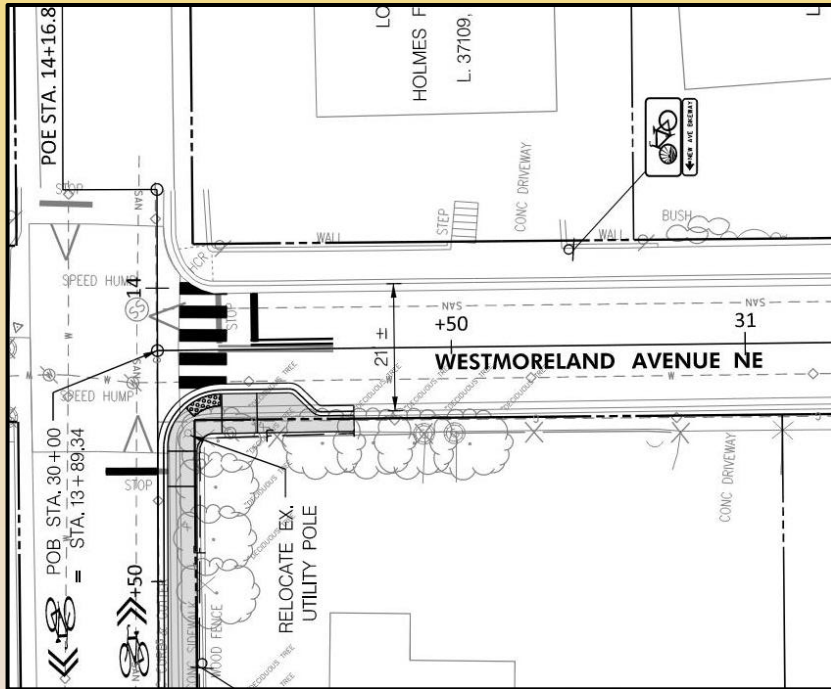


30% Design

New Ave Bikeway, District Connector

Westmoreland Avenue: Kansas Ln to 4th Ave

- Sharrows, curb extension for school bus stop



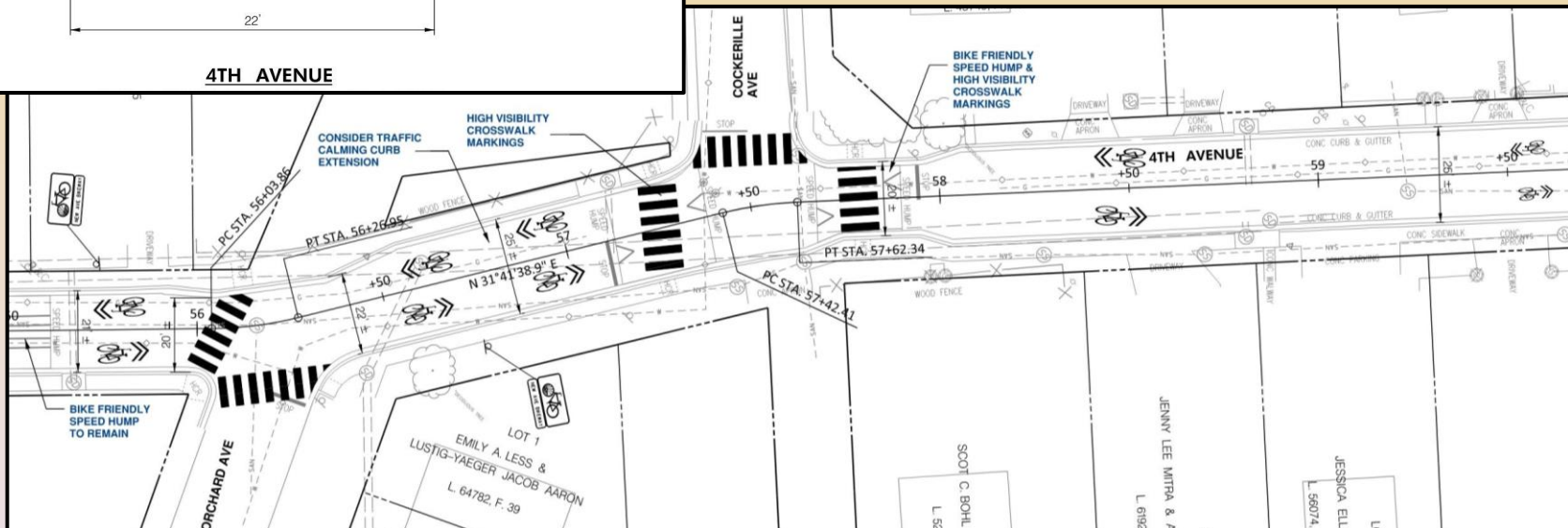
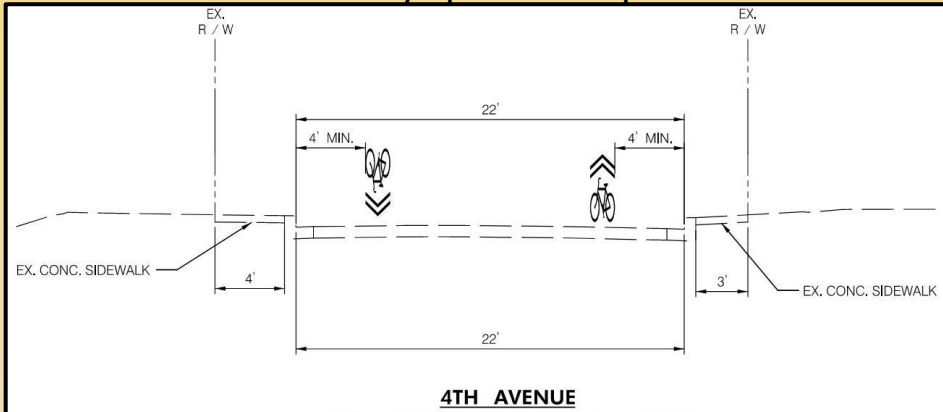


30% Design

New Ave Bikeway, District Connector

4th Avenue: Westmoreland Ave to Poplar Ave

- Sharrows, traffic calming curb extensions
- Bike-friendly speed humps



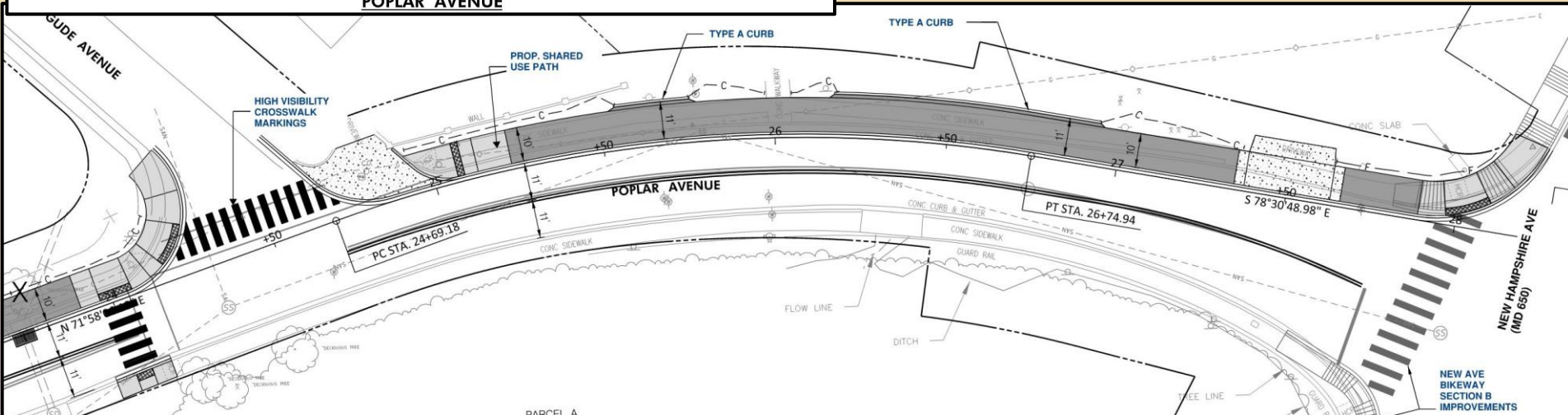
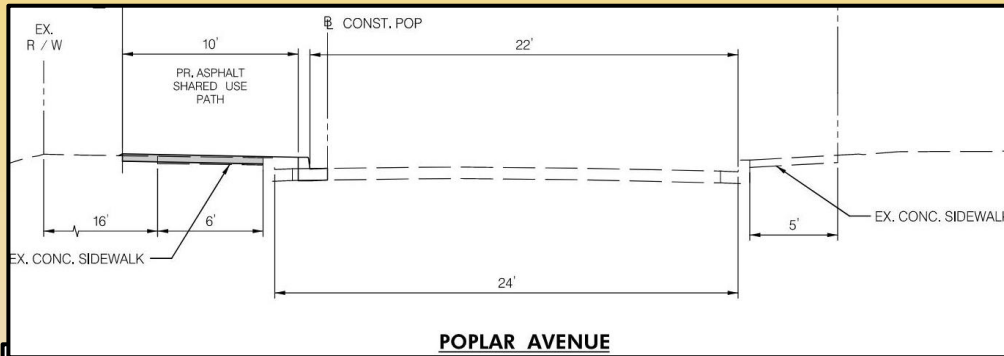


30% Design

New Ave Bikeway, District Connector

Poplar Avenue: 4th Ave to New Hampshire Ave

- Shared use path, eliminate parking: south side
- Curb extension, reduce travel lane widths





Requirements to Implement

- Right of Way Impacts
 - None
- Street Parking Impacts
 - Poplar Ave from 4th Ave to New Hampshire Ave
 - eliminate street parking on south side
- Utility Impacts
 - Pole relocations (2) – Poplar Ave, Westmoreland Ave at Kansas Ln
 - Valve & meter vertical adjustments



Project Schedule

30% Design Phase (nearly complete):

Milestone	Date
1. Call / Kickoff with City & MWCOG	September 2022
2. Field Walk w/ City: Route Selection for 30% Design	October 2022
3. Submit Route Selection Memo	November 2022
4. Public Informational Field Walk	December 2022
5. Complete Surveys, Utility Data Collection	December 2022
6. Submit Draft Preliminary (30%) Design Plans	February 2023
7. Community Meeting	March 2023
8. Receive City/Agency/Community Comments	March / April 2023
9. Draft 30% Design Report	April 2023
10. Final 30% Design Report, Plans & Estimate	May 2023
11. City Council Presentation	Tonight

Community Engagement Completed

- December 2022: Public Informational Field Walk
- March 2023: Community Meeting No. 1
- March-April 2023: Two traffic counts on Poplar & 4th Ave
- March-April 2023: Community Survey*

* 20 survey responses (75%) generally supportive of project



Next Steps

- 30% Design Complete
 - July 2023
- City to seek additional funding

THE CITY OF TAKOMA PARK
AND THE METROPOLITAN WASHINGTON
COUNCIL OF GOVERNMENTS (MWCOC)
NEW AVE BIKEWAY SECTION D
DISTRICT CONNECTOR
MWCOC CONTRACT NO. 21-093

INDEX OF SHEETS		
SHEET NO.	DRAWING NO.	SHEET NAME
1	0101	GENERAL NOTES
2	0102	NEW AVE BIKEWAY DISTRICT CONNECTOR
3	0103	NEW AVE BIKEWAY DISTRICT CONNECTOR
4	0104	NEW AVE BIKEWAY DISTRICT CONNECTOR
5	0105	NEW AVE BIKEWAY DISTRICT CONNECTOR
6	0106	NEW AVE BIKEWAY DISTRICT CONNECTOR
7	0107	NEW AVE BIKEWAY DISTRICT CONNECTOR
8	0108	NEW AVE BIKEWAY DISTRICT CONNECTOR
9	0109	NEW AVE BIKEWAY DISTRICT CONNECTOR
10	0110	NEW AVE BIKEWAY DISTRICT CONNECTOR
11	0111	NEW AVE BIKEWAY DISTRICT CONNECTOR
12	0112	NEW AVE BIKEWAY DISTRICT CONNECTOR
13	0113	NEW AVE BIKEWAY DISTRICT CONNECTOR
14	0114	NEW AVE BIKEWAY DISTRICT CONNECTOR
15	0115	NEW AVE BIKEWAY DISTRICT CONNECTOR
16	0116	NEW AVE BIKEWAY DISTRICT CONNECTOR
17	0117	NEW AVE BIKEWAY DISTRICT CONNECTOR
18	0118	NEW AVE BIKEWAY DISTRICT CONNECTOR
19	0119	NEW AVE BIKEWAY DISTRICT CONNECTOR
20	0120	NEW AVE BIKEWAY DISTRICT CONNECTOR
21	0121	NEW AVE BIKEWAY DISTRICT CONNECTOR
22	0122	NEW AVE BIKEWAY DISTRICT CONNECTOR
23	0123	NEW AVE BIKEWAY DISTRICT CONNECTOR
24	0124	NEW AVE BIKEWAY DISTRICT CONNECTOR
25	0125	NEW AVE BIKEWAY DISTRICT CONNECTOR
26	0126	NEW AVE BIKEWAY DISTRICT CONNECTOR
27	0127	NEW AVE BIKEWAY DISTRICT CONNECTOR
28	0128	NEW AVE BIKEWAY DISTRICT CONNECTOR
29	0129	NEW AVE BIKEWAY DISTRICT CONNECTOR
30	0130	NEW AVE BIKEWAY DISTRICT CONNECTOR
31	0131	NEW AVE BIKEWAY DISTRICT CONNECTOR
32	0132	NEW AVE BIKEWAY DISTRICT CONNECTOR
33	0133	NEW AVE BIKEWAY DISTRICT CONNECTOR
34	0134	NEW AVE BIKEWAY DISTRICT CONNECTOR
35	0135	NEW AVE BIKEWAY DISTRICT CONNECTOR
36	0136	NEW AVE BIKEWAY DISTRICT CONNECTOR
37	0137	NEW AVE BIKEWAY DISTRICT CONNECTOR
38	0138	NEW AVE BIKEWAY DISTRICT CONNECTOR
39	0139	NEW AVE BIKEWAY DISTRICT CONNECTOR
40	0140	NEW AVE BIKEWAY DISTRICT CONNECTOR
41	0141	NEW AVE BIKEWAY DISTRICT CONNECTOR
42	0142	NEW AVE BIKEWAY DISTRICT CONNECTOR
43	0143	NEW AVE BIKEWAY DISTRICT CONNECTOR
44	0144	NEW AVE BIKEWAY DISTRICT CONNECTOR
45	0145	NEW AVE BIKEWAY DISTRICT CONNECTOR
46	0146	NEW AVE BIKEWAY DISTRICT CONNECTOR
47	0147	NEW AVE BIKEWAY DISTRICT CONNECTOR
48	0148	NEW AVE BIKEWAY DISTRICT CONNECTOR
49	0149	NEW AVE BIKEWAY DISTRICT CONNECTOR
50	0150	NEW AVE BIKEWAY DISTRICT CONNECTOR

LOCATION MAP
PROJECT LENGTH = 0.51 MILES

30% DESIGN SUBMITTAL
FEBRUARY 2023
NOT FOR CONSTRUCTION

New Ave Bikeway Section D District Connector

Preliminary Design Report
May 2023



Questions?

New Ave Bikeway, Section D – *District Connector*



Contact

Alexander Freedman

Planner

he, him, his | ¡Hablo español!

alexanderf@takomaparkmd.gov

Phone: (301) 891-7213

Project Website:

<https://takomaparkmd.gov/government/housing-and-community-development/planning-and-community-development/new-ave-bikeway/>