



Takoma Park City Council Meeting – September 25, 2024 Agenda Item 1 and 2

Voting Session

1. Second Reading Ordinance Authorizing the Installation of Speed Humps on the 6700 to 6800 Block and the 6600 Block of Westmoreland Avenue
2. Second Reading Ordinance Authorizing the Installation of Traffic Calming at the Intersections of 13th Avenue and Elson Place, 14th Avenue and Elson Street, and 14th Avenue and Elson Place

Recommended Council Action

Approve the ordinances at second reading.

Context with Key Issues

The City received these requests prior to July 1, 2024, when the new Administrative Regulations for Traffic Calming went into effect. Consequently, the requests are being processed using the prior steps, detailed below.

The previous process for residents to request installation of traffic calming was set forth in the City Code and Administrative Regulation 96-1 (links below). Once the petition is certified as meeting the requirements, and a public meeting has been held, the City Council accepts comments at a public hearing. After the public hearing and consultation with the Public Works Director, the City Council may direct the installation of traffic calming by adoption of a two-reading ordinance. The required public hearings were held on September 11, 2024. First reading of the ordinances took place on September 18, 2024.

A. Hillwood Manor Neighborhood Association Request

Residents of 13th Avenue, 14th Avenue, Elson Place and Elson Street have petitioned for the installation of traffic calming measures at the intersections of 13th Avenue and Elson Place, 14th Avenue and Elson Street, and 14th Avenue and Elson Place. The petitioners obtained the necessary signatures and held a community meeting as required for the request to move forward. The Public Works Department has evaluated the request and developed a roadway intersection realignment and narrowing design.

B. Westmoreland Avenue Request

Residents of Westmoreland Avenue have petitioned for the installation of speed humps in the 6600 and 6700-6800 blocks of Westmoreland Avenue. The petitioners obtained the necessary signatures and held a community meeting as required for the request to move forward. The Public Works Department has evaluated the request and recommends the installation of one speed hump in the 6600 block and two speed humps in the 6700-6800 block. The speed hump style will be the Montgomery County standard. Additionally, the Department recommends the installation of a double yellow center line from just below the intersection of Westmoreland Avenue and Walnut/Elm Avenue to 6814 Westmoreland Avenue, as well as marked crosswalks on all four sides of the intersection of Westmoreland Avenue and Walnut/Elm Avenue, and two Children at Play signs to be installed near 6812 Westmoreland Avenue and 6706 Westmoreland Avenue.

Council Priority

A livable Community for All; Engaged, Responsive and Service-Oriented Government

Environmental Considerations

Traffic calming measures can reduce the speed of traffic on a street, thereby providing a safer street for drivers, bicyclists or pedestrians. Improving the roadway intersection configuration will make the stop signs more visible and encourage slower driving through the intersection.

Fiscal Considerations

The projected cost of installing the Hillwood Manor Neighborhood Association traffic calming requests is \$29,500. The projected cost for the Westmoreland Avenue request includes speed humps at \$4,047 each, pavement line marking of \$1,000, and four continental style crosswalk markings estimated to cost \$6,000 for a total of \$19,000.

Racial Equity Considerations

We do not believe that the installation of this traffic calming request will disproportionately impact any particular group. However, since the process to request traffic calming on a block required the collection of signatures from two-thirds of the households on the block and the block on either side, arranging for a community meeting, and coordination with City staff, it can be a barrier for some residents to initiate the process.

Attachments and Links

- [Administrative Regulation – Traffic Calming Devices – Petition Process and Installations](#)
- [Takoma Park Code, Chapter 13.28, Traffic Calming Devices](#)
- Ordinances with maps showing locations of traffic calming measures to be implemented.

Introduced by: Councilmember Gibson

First Reading: September 18, 2024

Second Reading:

Effective Date:

CITY OF TAKOMA PARK, MARYLAND

ORDINANCE NO. 2024-27

**AUTHORIZING THE INSTALLATION OF SPEED HUMPS ON THE 6700 to 6800
BLOCK AND THE 6600 BLOCK OF WESTMORELAND AVENUE**

WHEREAS, in accordance with Takoma Park Code, Section 13.28.010, the Director of Public Works is authorized to place, erect, and maintain upon the public highways of the City such traffic calming devices as the Council may direct at locations designated by the Council or as determined by the City Manager or his or her designee.

NOW, THEREFORE, BE IT ORDAINED BY THE COUNCIL OF THE CITY OF TAKOMA PARK, MARYLAND THAT the following traffic calming measures shall be implemented:

1. A County style speed hump will be installed near 6610 - 6611 Westmoreland Avenue.
2. A County style speed hump will be installed near 6706 - 6707 Westmoreland Avenue.
3. A County style speed hump will be installed near 6810 - 6811 Westmoreland Avenue.
4. A Children At Play sign will be erected near 6812 Westmoreland Avenue and the existing pedestrian crossing sign located at 6706 Westmoreland Avenue will be replaced with a Children At Play sign.
5. A double yellow center line will be installed in the 6800 block of Westmoreland Avenue from just below the intersection with Walnut Ave/Elm Avenue to 6814 Westmoreland Avenue.
6. Marked crosswalks will be installed on all sides of the Westmoreland and Walnut Ave/Elm Avenue intersection.

Adopted this _ day of ___, 2024 by roll-call vote as follows:

AYE:

NAY:

ABSTAIN:


ABSENT:



 Proposed crosswalk

 Center line

 Speed hump locations

 Children at Play signs

Introduced by: Councilmember Dyballa

First Reading: September 18, 2024

Second Reading:

Effective Date:

CITY OF TAKOMA PARK, MARYLAND

ORDINANCE NO. 2024-28

**AUTHORIZING THE INSTALLATION OF TRAFFIC CALMING AT
INTERSECTIONS OF 13th AVENUE AND ELSON PLACE, 14th AVENUE AND ELSON
STREET, AND 14th AVENUE AND ELSON PLACE**

WHEREAS, in accordance with Takoma Park Code, Section 13.28.010, the Director of Public Works is authorized to place, erect, and maintain upon the public highways of the City such traffic calming devices as the Council may direct at locations designated by the Council or as determined by the City Manager or his or her designee.

NOW, THEREFORE, BE IT ORDAINED BY THE COUNCIL OF THE CITY OF TAKOMA PARK, MARYLAND THAT the following traffic calming measures shall be implemented:

1. Narrow the width of 13th Avenue on either side of the intersection with Elson Place.
2. Narrow the width and adjust Elson Place at the approach to 14th Avenue to create a T shaped intersection.
3. Narrow the width and adjust 14th Avenue at the approach to Elson Street to create a T shaped intersection.

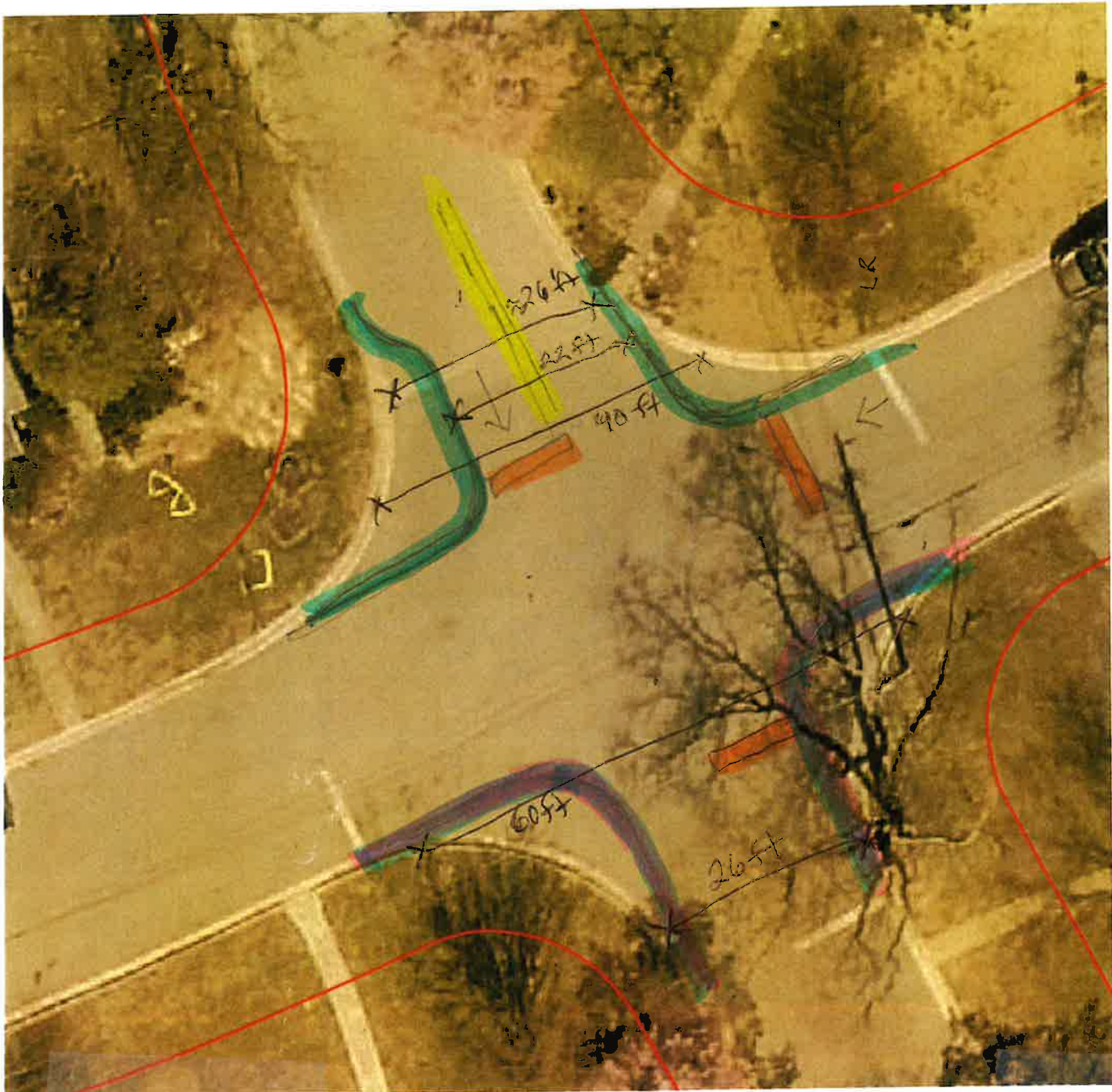
Adopted this _ day of ___, 2024 by roll-call vote as follows:

AYE:




NAY:

ABSTAIN:

ABSENT:



13TH AVE & ELSON PLACE

-  Proposed new curb line
-  Proposed stop bar location
-  New center line

- Current roadway width is 26 feet
- Proposed reconfiguration of the north side of 13th would result in minimum 22 foot wide section



14TH AVE & ELSON PLACE

 Proposed new curb line

- Adjust curb line on Elson Place so it meets 14th Avenue in a “T” configuration
- Current roadway width on Elson Place is 23 feet, new configuration will be no narrower than 23 feet.



14th AVE & ELSON STREET

 Proposed new curb line

- Adjust curb line on 14th Ave so that it meets Elson Street in a "T" configuration
- Current road width on 14th Avenue is approximately 25 feet wide
- Proposed width at intersection would be no less than 24 feet wide