



City of Takoma Park Data Explorer Instructions

November 17, 2021

Contents

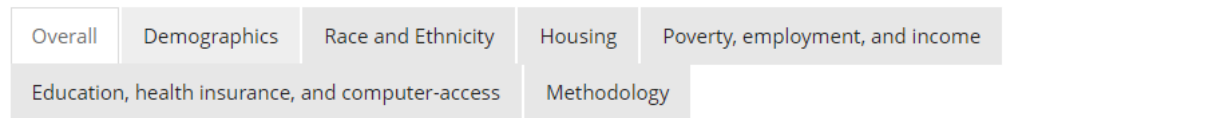
| | |
|----------------------------|---|
| Overview | 2 |
| Interactive graphics | 5 |

Overview

The City of Takoma Park Data Explorer is a tool allowing City residents and staff to learn more about their city using data. The explorer is organized into an overall tab, a methodology tab, and subject-based tabs with data on each subject: Demographics; Race and Ethnicity; Housing; Poverty, employment and income; Education, health insurance, and computer-access.

The “Overall Tab” has summary information from all of the subject-based tabs.

staff@takomapark.md.gov

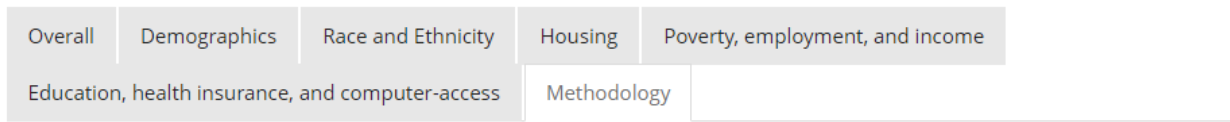


Summary

Takoma Park is a diverse city with a population of 17,672. Of Takoma Park’s 6,567 households, 4,298 are family households—meaning they are rented or owned by a householder who lives with at least one family member—and 2,269 are nonfamily. The City’s three largest racial/ethnic groups are non-Hispanic white (46.33%), Black (32.95%), and Hispanic (11.61%). Almost a third of residents were born in another country; of those born in another country, 44.05% were born in Africa and 35.58% in Latin America. A little more than a third of residents speak another language at home, the most common being Spanish at 9.91% of all residents.

A little more than half of the city’s residents are homeowners, but there are substantial economic and racial disparities tied to homeownership. 78.38% of white residents own a home, compared to just 16.33% of Black residents. Renters earn much less than homeowners and are more-likely than owners to experience housing cost-burden (meaning they spend at least 30% of their income on housing). Renters’ median income is \$42,092 compared to \$154,375 for owners, and 49.23% of renters experience housing cost burden compared to 21.85% of owners.

And the “Methodology Tab” has information on data-sources, definitions, and updates.



Methodology

Data sources

This webpage displays selected data from the 2015-2019 American Community Survey. The webpage was produced using RMarkdown. Data is downloaded from the Census using R's tidycensus package. Block-group data in the racial demographics map as well as the shapefile come from NHGIS, cited below. Data will be updated periodically (potentially with additional visualizations), and with 2016-2020 data once the newest version of the American Community Survey is released. Updates are described at the bottom of the page.

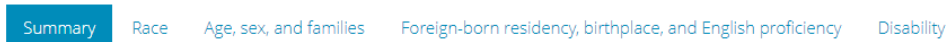
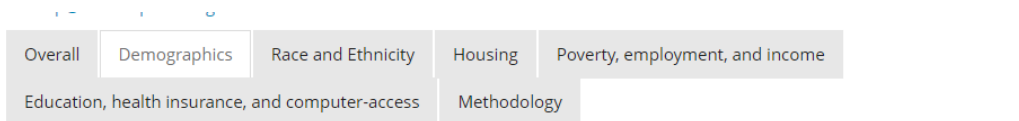
Organization of race/ethnicity data

Race and ethnicity data are consolidated in the “Race and Ethnicity” tab, and repeat in each subject-area heading tab (e.g., race/ethnicity housing data can be found in the “Housing” sub-tab of the “Race and Ethnicity” heading-tab, as well as in the “Housing” heading-tab).

The ACS vs. the decennial Census

Decennial Census results for 2020 will be analyzed separately. This is because the 5-year ACS updates each year rather than every 10 years (allowing more regular update to this webpage), contains some different data than the decennial Census, reflects different data than the decennial Census (survey results from a 5-year period rather than just 2020), and is collected differently (e.g., using statistical sampling to generate estimates rather than trying to survey every household).

Subject-based tabs open to a summary sub-tab, and have additional sub-tabs with detailed information and visualizations of specific subjects.



Takoma Park is a diverse city with a population of 17,672. By race, 46.33% of residents are white (non-Hispanic), 32.95% Black, 11.61% Hispanic (of any race), and 5.29% Asian.

By age range, the largest share of the population are people between 40 and 49 (representing 16.44% of the population), 30 and 39 (14.68%), and 0 and 9 (14.49%).

30.12% of residents were born outside the US (a higher share than Maryland overall). 44.05% of foreign-born residents were born in Africa—more than double Maryland and Montgomery County's shares—followed by 35.58% from Latin America. A majority of the population other than white (non-Hispanic) and multiracial-residents are foreign-born.

Of Takoma Park's 6,567 households, 4,298 are family households—meaning they are rented or owned by a householder who lives with at least one family member—and 2,269 are nonfamily. Compared to Montgomery County, Takoma Park has a larger share of single-female family households, and a smaller share of married-couple households.

66.45% of residents' primary language spoken at home is English, 9.91% Spanish, and 23.64% other languages.

The largest reported non-European country of ancestry for residents is Ethiopia, representing 55.89% of the 2,512 residents the Census reports as having sub-Saharan African ancestry. **The three largest country of ancestry of people with a reported race of Asian are Indian, Chinese, and Vietnamese** (representing 449, 141, and 111 residents respectively).

6.9% of residents have a disability, a lower share than Montgomery County and Maryland. Rates of disability increase with age, from 0.56% of residents younger than 5 to 58.84% of residents 75 and older.

For instance, to find out about the age of Takoma Park residents, you can click on the “Age, sex, and families” sub-tab in the Demographics tab:

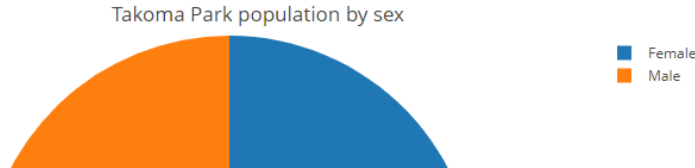


Table of contents

1. Sex
2. Age
3. Household-type
4. Household living arrangements
5. Age by sex

Sex

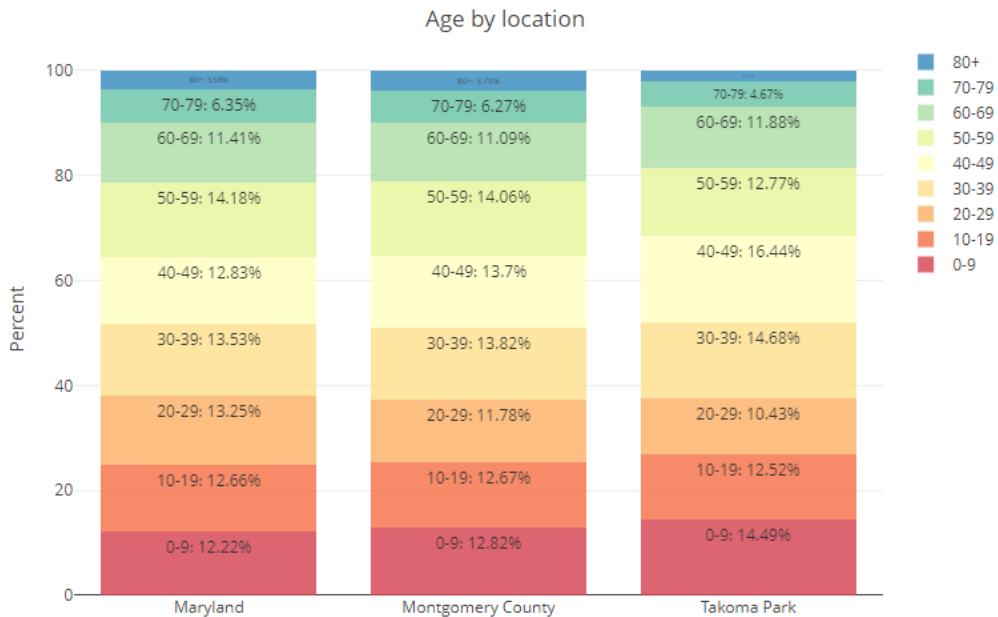
51.39% of Takoma Park’s population are female, and 48.61% are male.



And then click on the “Age” link in the Table of Contents to jump to an age visualization:

Age

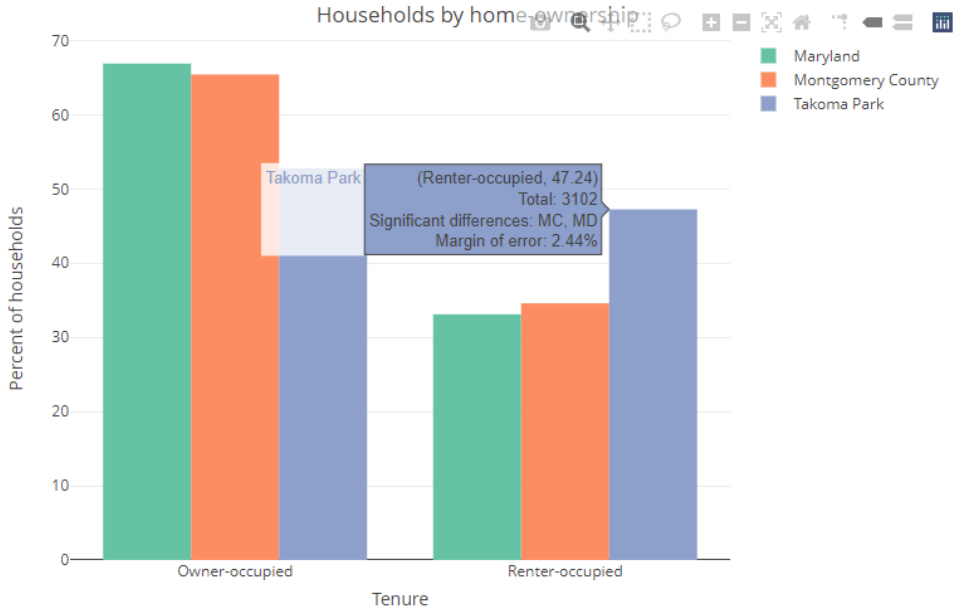
Compared to Montgomery County and Maryland, Takoma Park has a slightly higher share of people aged 40-49 at 16.44% compared to 13.7% in Montgomery County and 12.83% in Maryland, and a slightly higher share of people aged 0-9 at 14.49% compared to 12.82% and 12.22% in Montgomery County and Maryland. The city has a slightly lower share of people over 70—representing 6.78% of residents compared to 10.06% in Montgomery County and 9.93% in Maryland—and a slightly lower share of people aged 20-29 than Maryland, representing 10.43% of residents compared to 13.25% in Maryland.



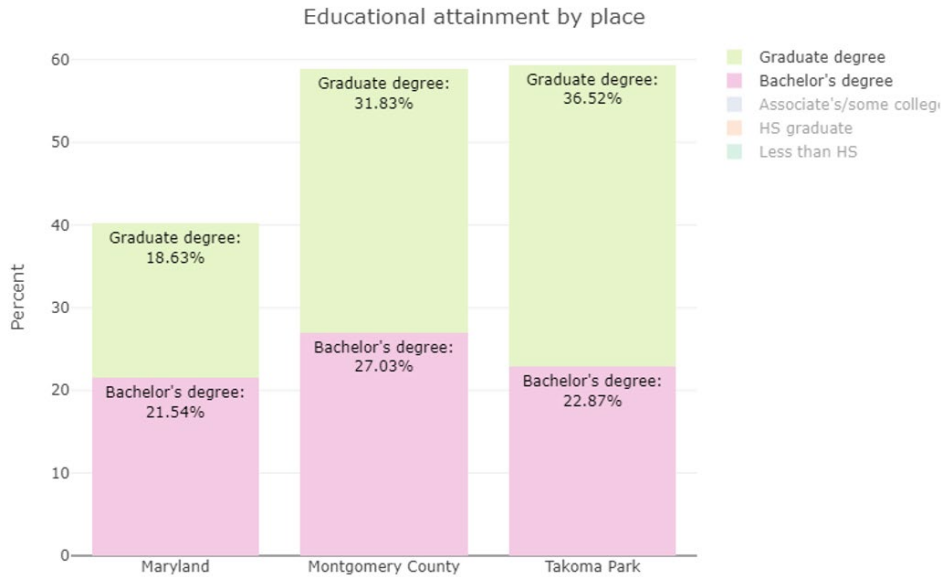
Interactive graphics

Visualizations in the data explorer are interactive, which means you can manipulate them to find out more. For instance, when you hover your mouse over “Takoma Park/renter-occupied” bar, as well as showing the percent of households that are renter-occupied, you can see the total renter-occupied households, whether there are significant differences between Takoma Park’s share of renter-occupied households and Montgomery County/Maryland, and the margin of error of the result.

Approximately 47.24% of Takoma Park’s population are renters.

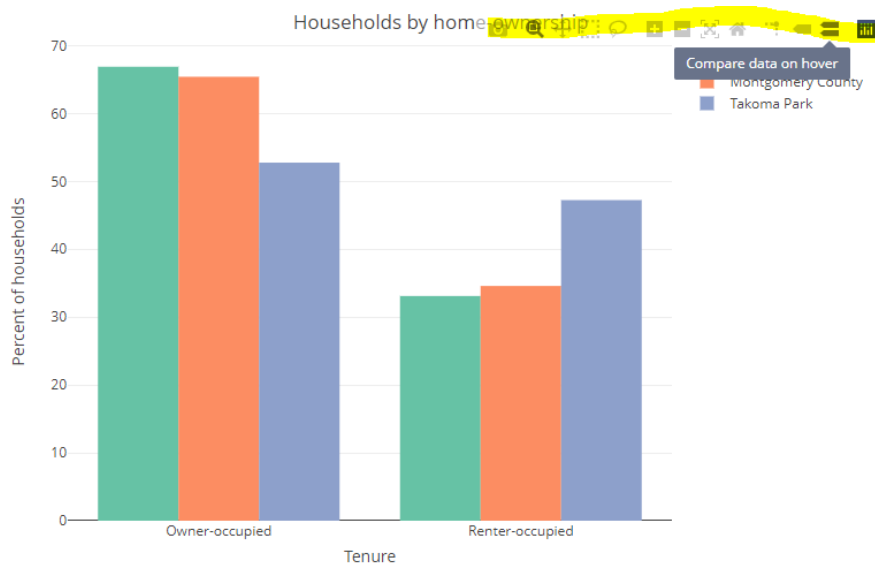


You can click on items in the legend to show or hide them. Double-clicking on a legend item hides all other legend items (or restores them if you've hid them). Clicking on one legend item hides it (or shows it if you've already hidden them).

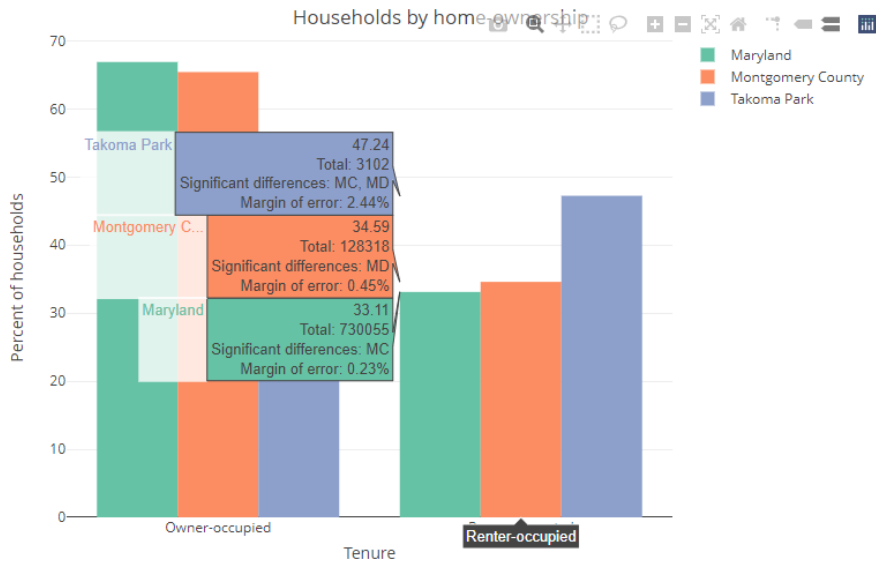


These features can be useful for comparing subgroups, especially in complicated visualizations. In the graphic above, hiding legend items other than “Graduate degree” and “Bachelor’s degree” makes it easy to compare college and above attainment between Takoma Park and Montgomery County.

In the top right of each graph, you can see additional options for interacting with visualizations:

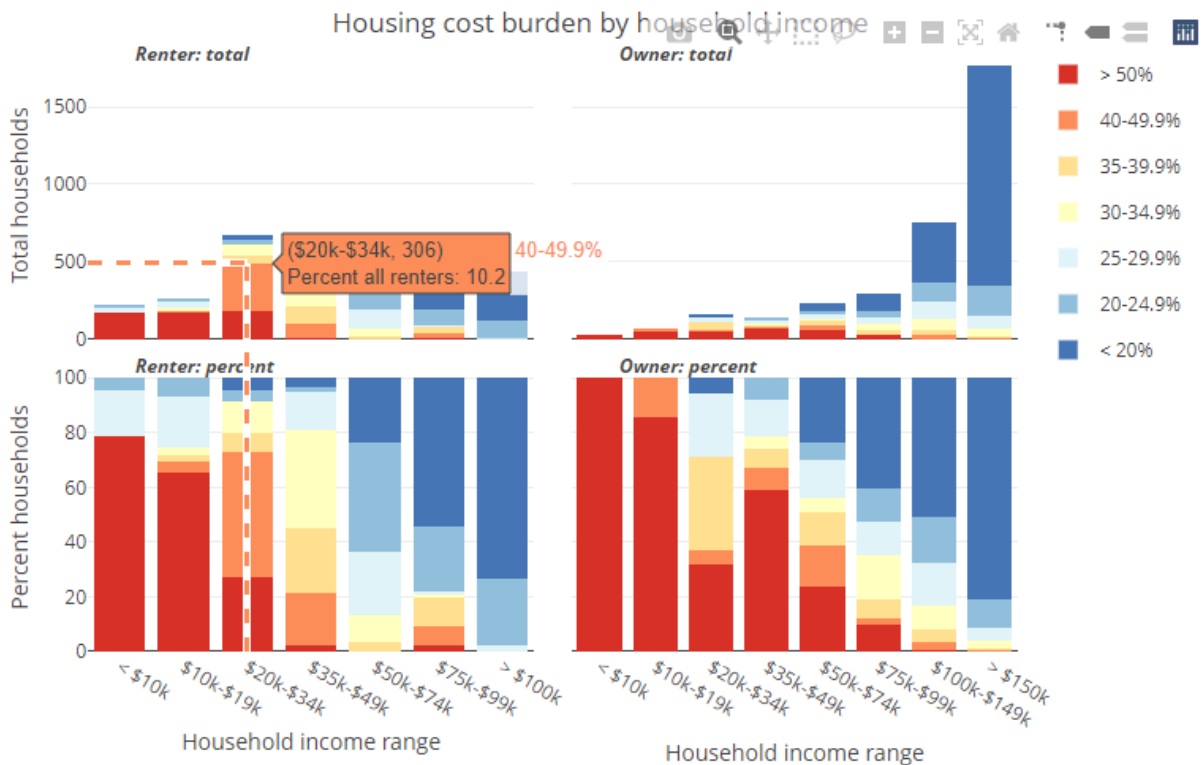


The “Compare data on hover option” makes it possible to easily compare values between groups. For instance, below text on renters pops up for Takoma Park, Maryland, and Montgomery County.

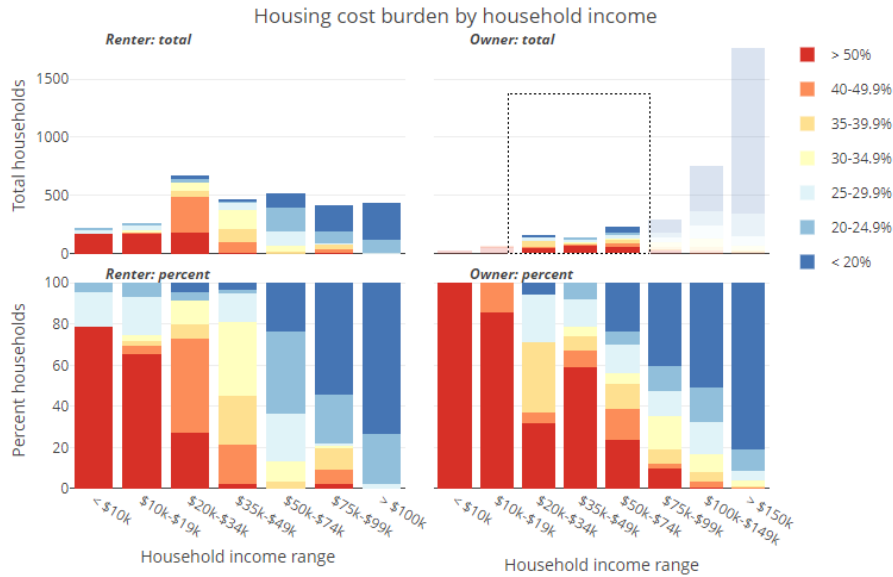


“Toggle spike lines” makes it easier to see where on the Y-axis values appear. This can be especially useful for cumulative graphics. For instance, the chart below lets you see that there are around 500 renter-households in Takoma Park spending more than 40% of their income on housing.

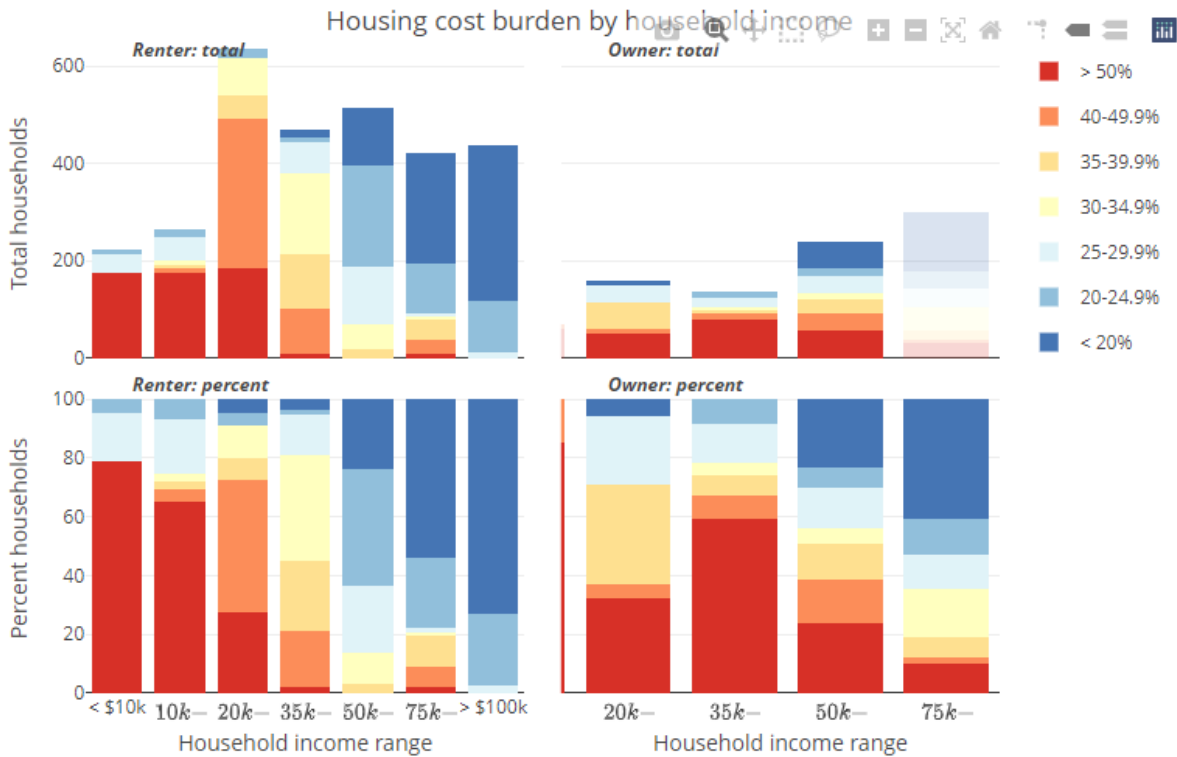
nonowners compared to the 500 cost-burdened renter households.



The box and lasso select features make it possible to highlight certain values and de-highlight others, and the zoom features let you zoom in. For instance, if you wanted to focus on homeowners making between \$20,000 and \$49,999 dollars, you could use the box select tool to select those values.

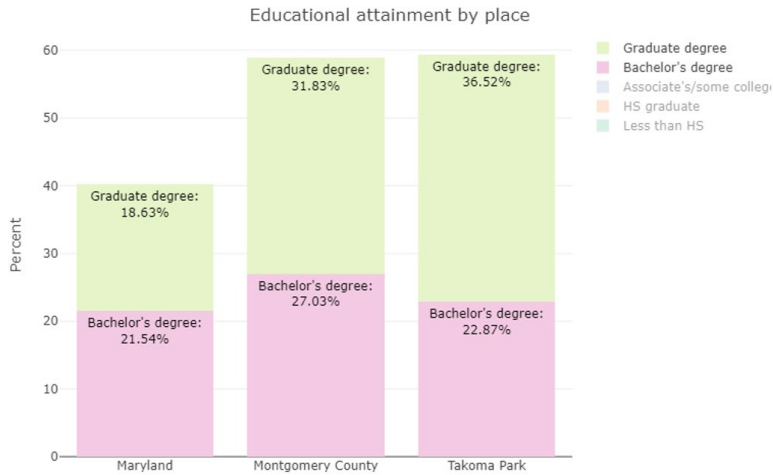


And then zoom-in on them to get a closer look.



To return to the normal view, you can hit the “Reset axes” button or double-click.

If you want to save a graph, you can hit the “Download plot as a png” button. This creates a png image of the graph on your computer.



Note that changes you've made to the graph are saved in the png. In the image above, the options for “Graduate Degree” and “Bachelor’s Degree” are selected, making it easier to compare Takoma Park to Maryland and Montgomery County by educational attainment. Saving as a png can be especially useful for saving graphs you've customized without needing to recreate it.