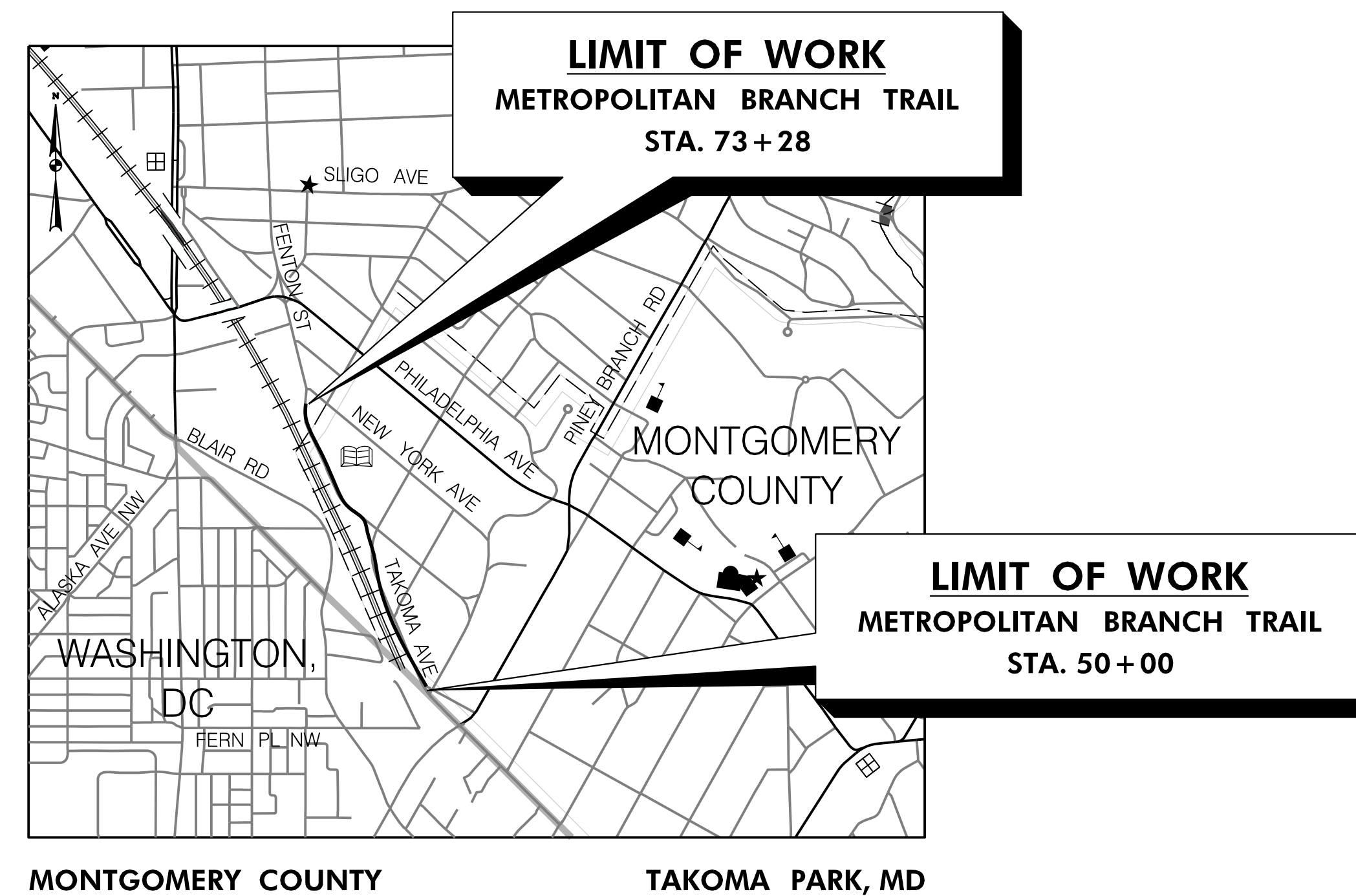


# THE CITY OF TAKOMA PARK AND THE METROPOLITAN WASHINGTON COUNCIL OF GOVERNMENTS (MWCOCG) METROPOLITAN BRANCH TRAIL UPGRADE D.C. LINE TO SOUTH OF NEW YORK AVENUE MWCOCG CONTRACT NO. 21-093

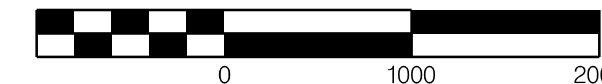
## INDEX OF SHEETS

SHEET NO.	DRAWING NO.	SHEET NAME
1	TS-01	TITLE SHEET
2	AB-01	NOTES, ABBREVIATIONS, AND SYMBOLS
3	GS-01	GEOMETRY SHEET
4	HT-01	TYPICAL SECTIONS
5-10	HD-01 TO HD-06	PLAN SHEETS
11-16	HP-01 TO HP-06	PROFILE SHEETS



### LOCATION MAP

SCALE: 1" = 1000'



**PROJECT LENGTH = 0.44 MILES**

HORIZONTAL DATUM	NAD 83 /11
VERTICAL DATUM	NAVD 88

**30% DESIGN SUBMITTAL  
FEBRUARY 2023  
NOT FOR CONSTRUCTION**



P: 410.728.2900  
700 East Pratt Street, Suite 500 | Baltimore, MD 21202

Engineers | Construction Managers | Planners | Scientists  
www.rkk.com

Responsive People | Creative Solutions

DRILL HOLES

DRILL HOLES

DRILL HOLES

BY: aagujjar -

# ABBREVIATIONS

AASHTO ..... American Association of State Highway Transportation Officials	HDWL..... Headwall	RW or RW... Right of Way
ADT..... Average Daily Traffic	HERCP..... Horizontal Elliptical Reinforced Concrete Pipe	RCP ..... Reinforced Concrete Pipe
AHD..... Ahead	HP..... High Point	RCPP ..... Reinforced Concrete Pressure Pipe
APPROX..... Approximate	IN..... Inch	R.Q.D. .... Rock Quality Designation
BL or BL..... Baseline	I.S.T..... Inlet Sediment Trap	R.M. .... Rootmat
BK ..... Back /Book	INV..... Invert	S ..... South
BIT..... Bituminous	J.B..... Junction Box	SAN..... Sanitary Sewer
B.C..... Bituminous Concrete	K ..... K Inlet	SB or SB ..... Southbound
B.M..... Bench Mark	L ..... Length	S.D. .... Storm Drain
BOT..... Bottom	LF ..... Linear Feet	S.D.D. .... Surface Drain Ditch
C.C..... Center of Curve	L.L..... Liquid Limit	SE ..... Super Elevation
CAP..... Corrugated Aluminum Pipe	LP ..... Low Point	SF ..... Silt Fence
CAPA..... Corrugated Aluminum Pipe Arch	L.P..... Light Pole	SF ..... Square Feet
CATV..... Cable Television	LT..... Left	SHT..... Sheet
C.B.R..... California Bearing Ratio	MAC..... Macadam	SPP ..... Structural Steel Plate Pipe
CL or CL..... Centerline	M.C..... Moisture Content	SPPA..... Structural Steel Plate Pipe Arch
CL..... Class	MAX..... Maximum	S.P.T..... Standard Penetration Testing
CLF..... Chainlink Fence	M.D.D..... Maximum Dry Content	SRP..... Steel Spiral Rib Pipe – Aluminized Type 2
CMP..... Corrugated Metal Pipe	MOD..... Modified	SRPA..... Steel Spiral Rib Pipe Arch – Aluminized Type 2
C.O..... Cleanout	MIN..... Minimum	SSD..... Stopping Sight Distance
COMB..... Combination	N..... North	SSF..... Super Silt Fence
CONC..... Concrete	NB ..... Northbound	STD..... Standard
CONSTR..... Construction	NE ..... Northeast	STA..... Station
COR..... Corner	N.P..... Non-Plastic	SO..... Single Opening
CORR..... Correction	O.C..... On Center	SY ..... Square Yards
CPP-S..... Corrugated Polyethylene Pipe – Type 'S'	OHE..... Overhead Electric	SWM..... Stormwater Management
CSP..... Corrugated Steel Pipe – Aluminized Type 2	O.M..... Optimum Moisture	T ..... Tangent
CSPA..... Corrugated Steel Pipe Arch – Aluminized Type 2	PAV T..... Pavement	T ..... Telephone
DC..... Degree of Curve	PC ..... Point of Curvature	T.C..... Top of Cover
D.H.V..... Design Hourly Volume	PCC ..... Point of Compound Curvature	T.G..... Top of Grate
D.I..... Drop Inlet	PC ..... Point of Crown	T or TL..... Traverse Line
DIA..... Diameter	P/GE..... Profile Grade Elevation	T.M..... Top of Manhole
D.O..... Double Opening	P.G.E..... Profile Ground Elevation	TRAV..... Traverse
E ..... East	P.G.L..... Profile Grade Line	TS ..... Temporary Swale
E ..... Electric	P/PL..... Profile Ground Line	T.S..... Top of Slab
E ..... External Distance	P/R ..... Point of Rotation	T.S..... Topsoil
EA ..... Each	P.I..... Plasticity Index	TYP..... Typical
EB ..... Eastbound	PI ..... Point of Intersection	U.D..... Under Drain
ELEV..... Elevation	POC..... Point On Curve	U.G..... Underground
ES..... End Section	POT..... Point On Tangent	U.P..... Utility Pole
EX or EXIST..... Existing	PPWP..... Polyvinyl Chloride Profile Wall Pipe	USDA..... United States Department of Agriculture
FT..... Feet	PROP..... Proposed	VCL..... Vertical Clearance
F or FL..... Flowline	PRC..... Point of Reverse Curve	V.C.L..... Vertical Curve Length
F.B.D..... Flat Bottom Ditch	PT..... Point	W ..... Water
F.H..... Fire Hydrant	PT..... Point of Tangency	W ..... West
FWD..... Forward	PVC..... Point of Vertical Curve	WB ..... Westbound
G ..... Gas	PVC..... Polyvinyl Chloride	WB ..... Wetland Buffer
G.V..... Gas Valve	PVI..... Point of Vertical Intersection	W.M..... Water Meter
H.B..... Handbox	PVRC..... Point of Vertical Reverse Curve	W.S..... Wrapped Steel
HDPE..... High Density Polyethylene	PVT..... Point of Vertical Tangency	WUS..... Waters of the United States
	R ..... Radius	W.V..... Water Valve
	R.F..... Rock Fragments	
	RT..... Right	

# CONVENTIONAL SIGNS

PROPOSED MEDIAN BARRIER .....		PROPOSED PIPE / CULVERT .....	
ELECTRICAL HAND BOX - SIGNALS .....		EXISTING PIPE / CULVERT .....	
FLOW LINE .....		EXISTING DROP INLET .....	
STATE, COUNTY OR CITY LINES .....		UTILITY POLE .....	
PROPOSED TRAFFIC BARRIER .....		WETLAND .....	
EXISTING TRAFFIC BARRIER .....		WETLAND BUFFER .....	
PROPOSED FENCE LINE .....		WATERS OF THE U.S. ....	
EXISTING FENCE LINE .....		HEDGE / TREE LINE .....	
RIGHT OF WAY LINE .....		DECIDUOUS TREE.....	
EXISTING ROADWAY .....		CONIFEROUS TREE .....	
RAILROAD .....		GROUND ELEVATION .....	
BASE LINE OR SURVEY LINE .....		GRADE ELEVATION .....	
FIRE HYDRANT .....			
HISTORIC BOUNDARY .....			
WATERS OF THE U.S. ....			
WETLAND BOUNDARY .....			

# GENERAL NOTES

- THIS PROJECT WAS DESIGNED IN ACCORDANCE WITH THE 2012 PUBLICATION OF AMERICAN ASSOCIATION OF STATE HIGHWAY AND TRANSPORTATION OFFICIALS (AASHTO) "GUIDE FOR THE DEVELOPMENT OF BICYCLE FACILITIES" AND THE 2015 MARYLAND STATE HIGHWAY ADMINISTRATION BICYCLE POLICY AND DESIGN GUIDELINES.
- ALL CONSTRUCTION SHALL BE IN ACCORDANCE WITH THE LATEST EDITION OF THE MARYLAND STATE HIGHWAY ADMINISTRATION'S STANDARD SPECIFICATIONS FOR CONSTRUCTION AND MATERIALS AND BOOK OF STANDARDS FOR HIGHWAYS & INCIDENTAL STRUCTURES, AND THE MARYLAND MUTCD.
- LIMITED TOPOGRAPHIC AND PROPERTY SURVEYS WERE COMPLETED BY CDDI IN DECEMBER 2022. HORIZONTAL DATUM IS BASED ON NAD 83/2011 AND VERTICAL DATUM IS BASED ON NAVD 88.
- CALL "MISS UTILITY" AT 1-800-257-7777, 48 HOURS PRIOR TO THE START OF WORK. THE EXCAVATOR MUST NOTIFY ALL PUBLIC UTILITY COMPANIES WITH UNDERGROUND FACILITIES IN THE AREA OF PROPOSED EXCAVATION AND HAVE THOSE FACILITIES LOCATED BY THE UTILITY COMPANIES PRIOR TO COMMENCING EXCAVATION.
- REPAIRS TO UTILITIES OR PROPERTY DAMAGE AS A RESULT OF THE CONTRACTOR'S NEGLIGENCE OR METHOD OF OPERATION SHALL BE MADE AT THE CONTRACTOR'S EXPENSE BEFORE PROCEEDING WITH CONSTRUCTION.
- THE CONTRACTOR SHALL MAINTAIN PEDESTRIAN AND VEHICULAR ACCESS TO ALL PROPERTIES WITHIN THE PROJECT LIMITS AND SHALL COORDINATE WITH PROPERTY OWNERS TO MAINTAIN INGRESS/EGRESS DURING THE ENTRIE PERIOD OF CONSTRUCTION.
- RIGHT OF WAY AND EASEMENT LINES SHOWN ON THESE PLANS ARE FOR ASSISTANCE IN INTERPRETING THE PLANS.
- THE LOCATION OF UTILITIES SHOWN ON THE PLANS ARE FOR INFORMATION AND GUIDANCE ONLY. NO GUARANTEE IS MADE OF THE ACCURACY OF SAID LOCATIONS.
- THE DESIGN OF THIS PROJECT HAS INCORPORATED FACILITIES TO ACCOMMODATE PERSONS WITH DISABILITIES IN COMPLIANCE WITH STATE AND FEDERAL REQUIREMENTS.

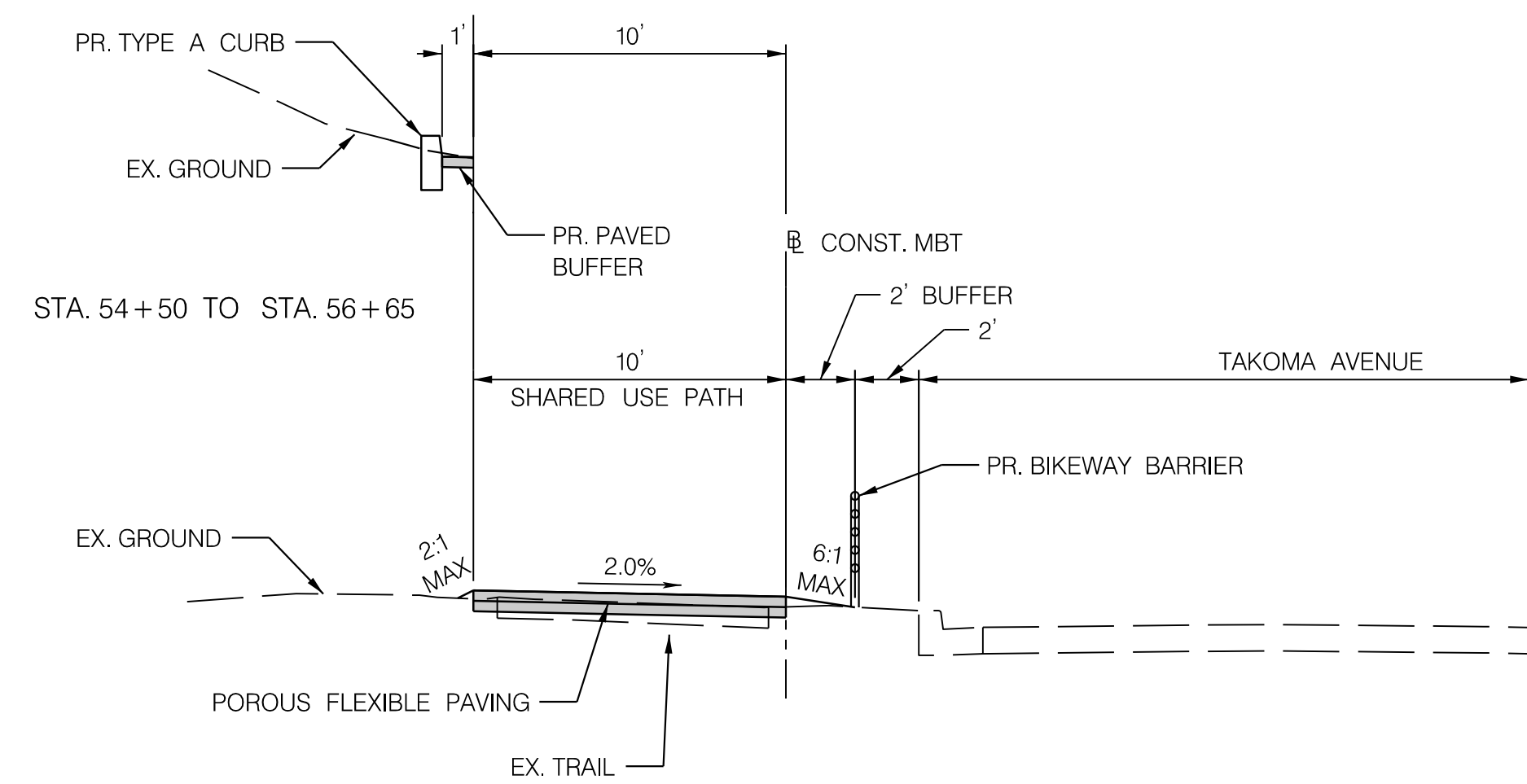
**CITY OF TAKOMA PARK**  
**METROPOLITAN BRANCH TRAIL UPGRADE**  
**D.C. LINE TO SOUTH OF NEW YORK AVENUE**

**NOTES AND ABBREVIATIONS SHEET**

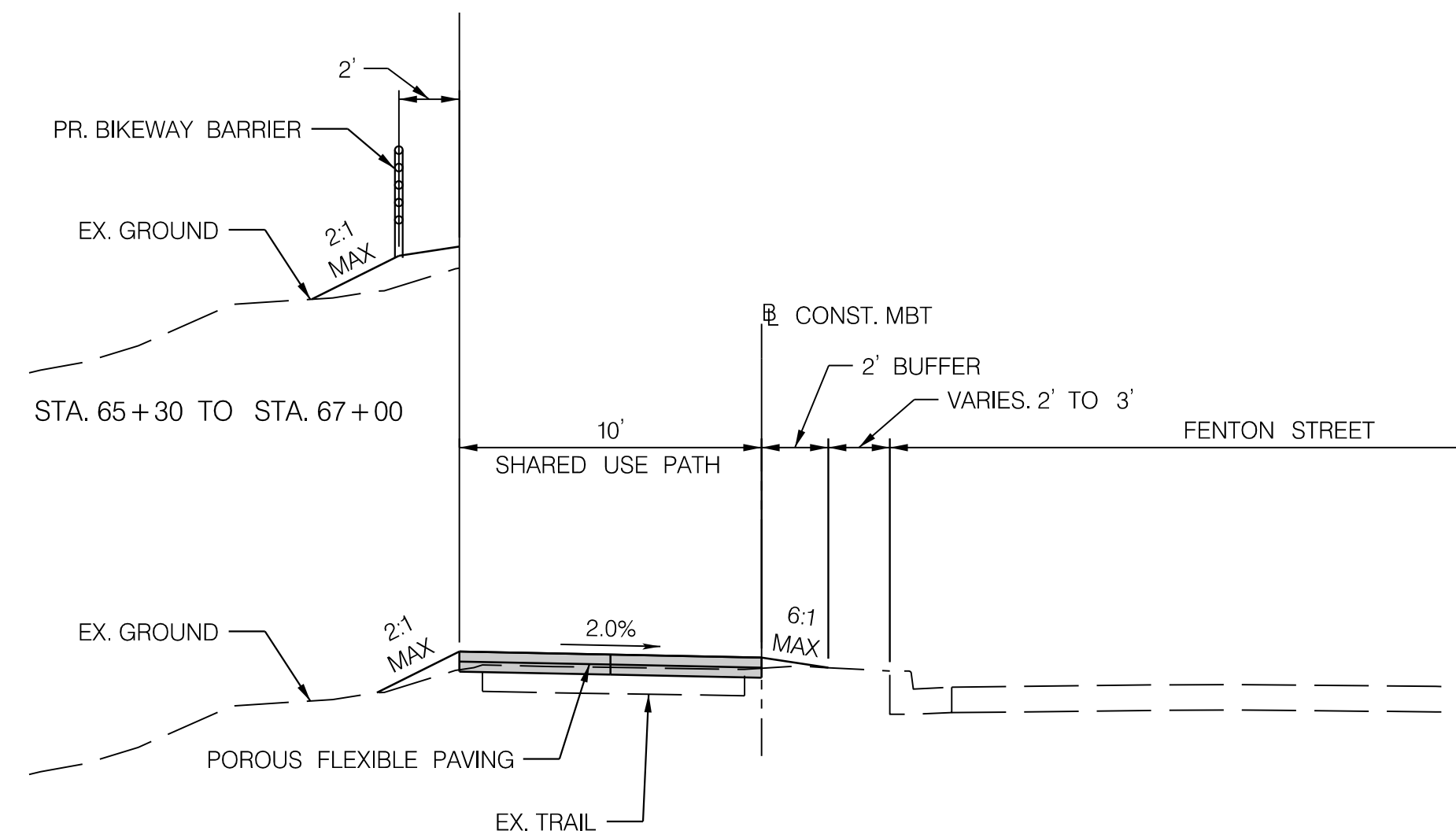
SCALE	NTS	DATE	FEBRUARY 2023	CONTRACT NO.	21-093-TLC
DESIGNED BY	AMA	COUNTY	MONTGOMERY		
DRAWN BY	MEG	LOGMILE			
CHECKED BY	RJG				
F.A.P. NO.	T.B.D.				
DRAWING NO.	<b>AB - 01</b>	OF	<b>01</b>	SHEET NO.	<b>2</b> OF <b>16</b>

**RK&K**  
P: 410.728.2900  
700 East Pratt Street, Suite 500 | Baltimore, MD 21202  
Engineers | Construction Managers | Planners | Scientists  
www.rkk.com  
Responsive People | Creative Solutions

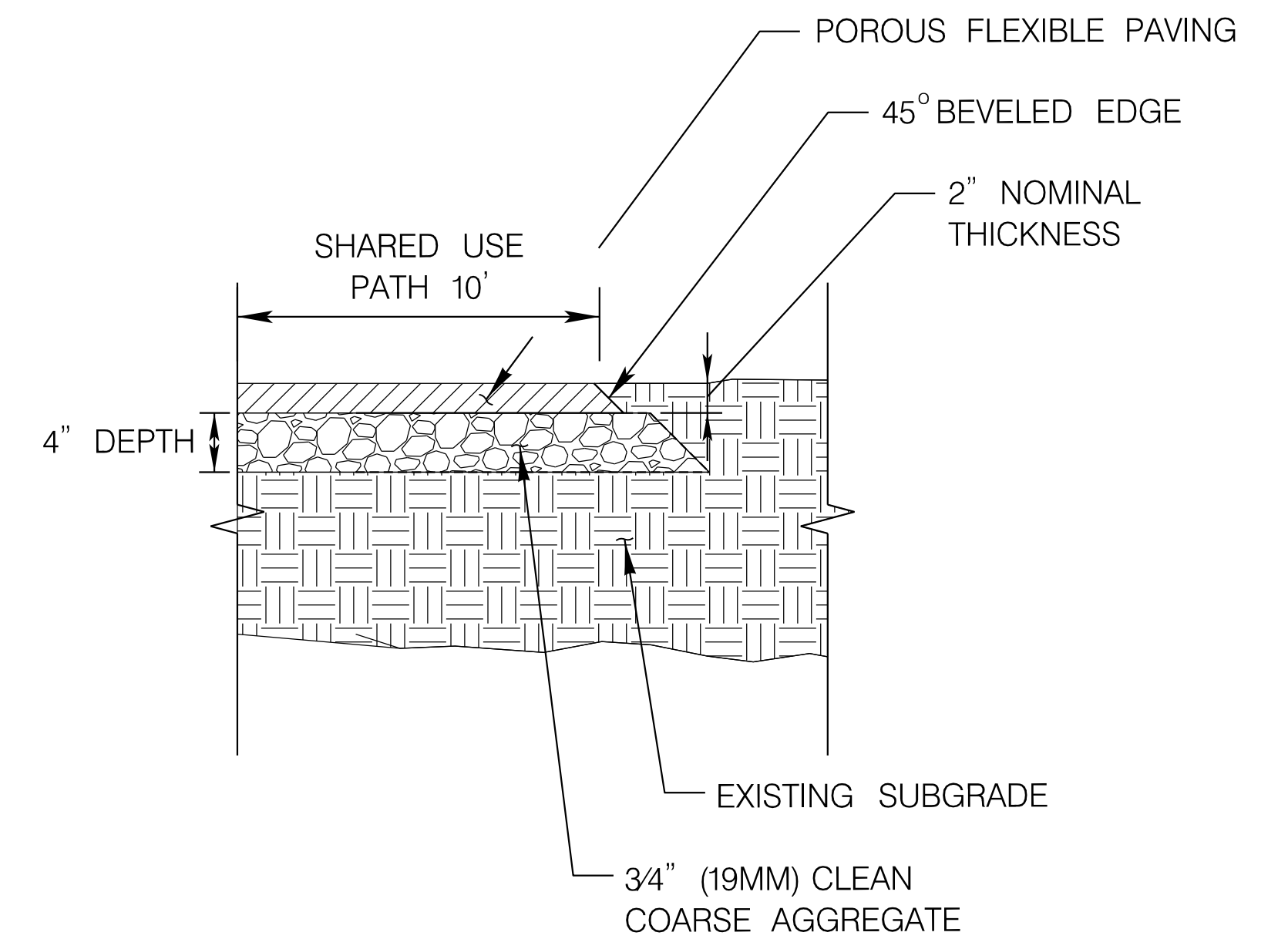
BY: aagular -



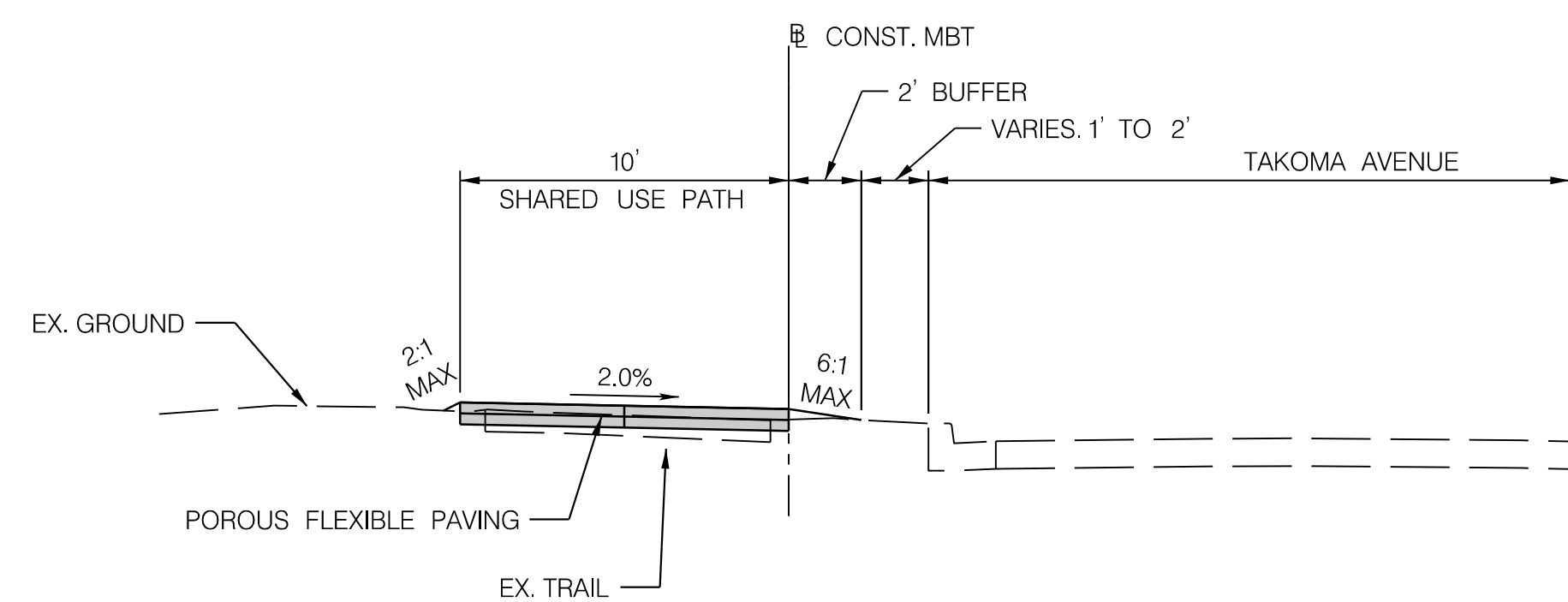
**METROPOLITAN BRANCH TRAIL TYPICAL SECTION**  
STA. 54+50 TO STA. 58+50



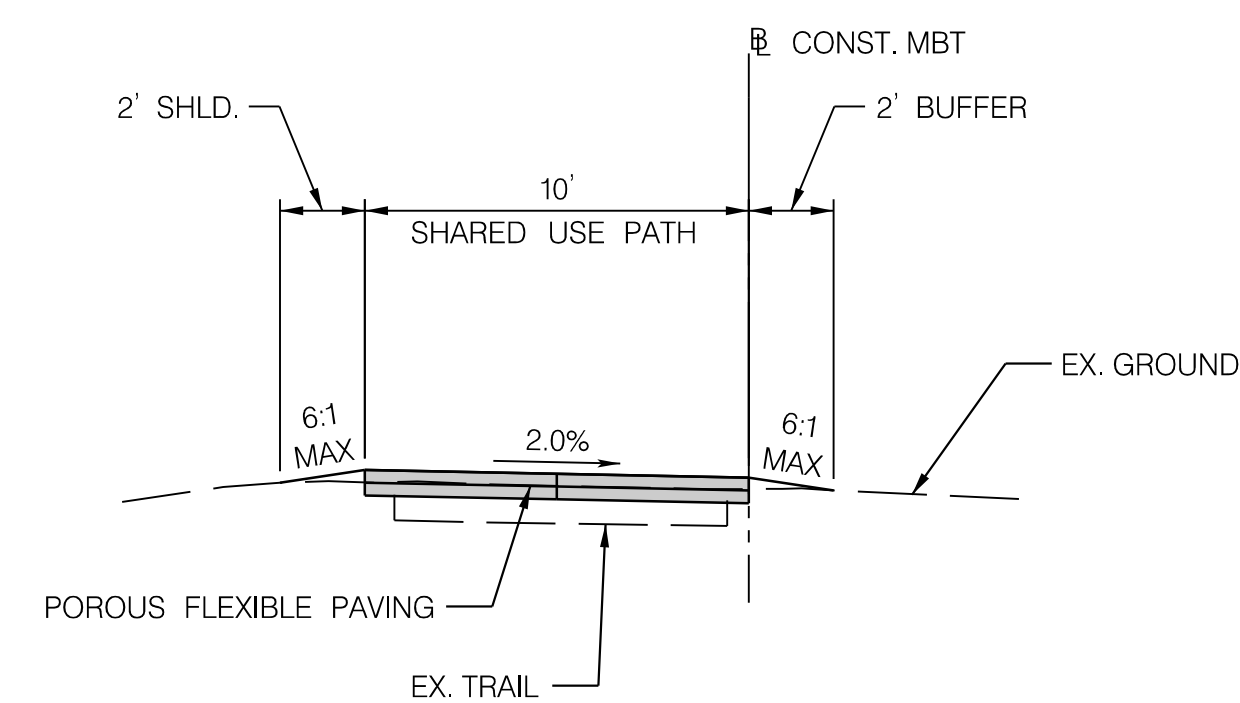
**METROPOLITAN BRANCH TRAIL TYPICAL SECTION**  
STA. 64+20 TO STA. 73+28



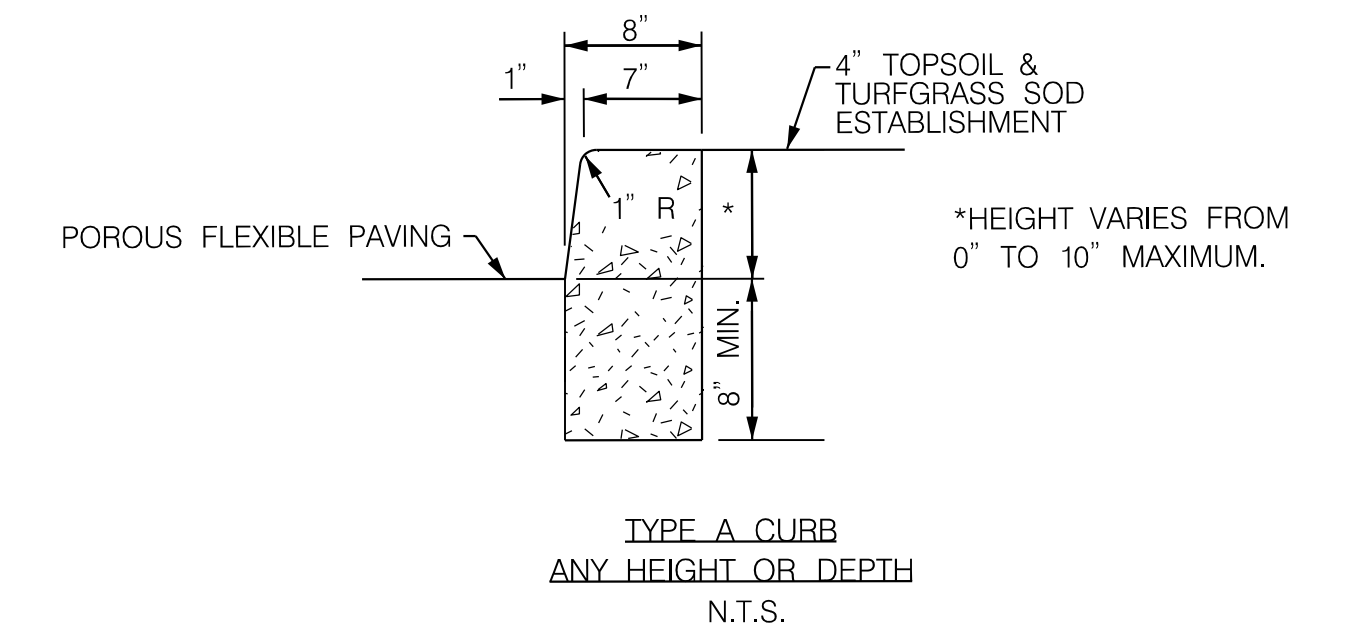
**POROUS FLEXIBLE PAVING**  
N.T.S.



**METROPOLITAN BRANCH TRAIL TYPICAL SECTION**  
STA. 50+00 TO STA. 54+50  
58+50 TO STA. 60+15



**METROPOLITAN BRANCH TRAIL TYPICAL SECTION**  
STA. 60+15 TO STA. 64+20



**TYPE A CURB**  
ANY HEIGHT OR DEPTH  
N.T.S.



**CITY OF TAKOMA PARK**  
**METROPOLITAN BRANCH TRAIL UPGRADE**  
**D.C. LINE TO SOUTH OF NEW YORK AVENUE**

**TYPICAL SECTIONS**

SCALE	1"=5'	DATE	FEBRUARY 2023	CONTRACT NO.	21-093-TLC
DESIGNED BY	AMA	COUNTY	MONTGOMERY		
DRAWN BY	MEG	LOGMILE			
CHECKED BY	R/JG				
F.A.P. NO.	T.B.D.				
DRAWING NO.	HT - 01	OF	01	SHEET NO.	04 OF 16



P: 410.728.2900  
700 East Pratt Street, Suite 500 | Baltimore, MD 21202

Engineers | Construction Managers | Planners | Scientists  
www.rkk.com

Responsive People | Creative Solutions

**LIMIT OF WORK**  
**METROPOLITAN BRANCH TRAIL**  
**STA. 50+00**

**LIMIT OF WORK**  
**METROPOLITAN BRANCH TRAIL**  
**STA. 73+28**

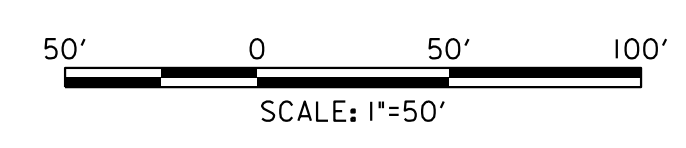
MATCH LINE — SEE THIS SHEET

MATCH LINE — SEE THIS SHEET

CURVE	POINT NO.	STATION	NORTH	EAST	BEARING
MBT-1	PC	47+31.82	477,871.3803	1,306,856.0403	N44°09'36.1299"W
	PI	48+67.48	477,968.7056	1,306,761.5276	
	PT	50+00.00	478,093.7528	1,306,708.9149	N22°49'06.8152"W
MBT-2	PC	58+47.28	478,874.7252	1,306,380.3266	
	PI	59+10.24	478,932.7568	1,306,355.9102	
	PT	59+72.65	478,994.8048	1,306,345.2395	N9°45'28.9065"W
MBT-3	PC	60+5.33	479,036.8582	1,306,338.0073	
	PI	60+35.76	479,056.9943	1,306,334.5444	
	PT	60+56.02	479,075.8895	1,306,326.7708	N22°21'45.5473"W
MBT-4	PC	61+99.53	479,208.6035	1,306,272.1712	
	PI	62+25.82	479,232.9184	1,306,262.1679	
	PT	62+51.80	479,259.0145	1,306,258.9615	N7°00'16.6721"W
MBT-5	PC	63+12.69	479,319.4465	1,306,251.5364	
	PI	63+68.83	479,375.1711	1,306,244.6898	
	PT	64+19.48	479,410.7247	1,306,201.2382	N50°42'31.3718"W
MBT-6	PC	64+72.13	479,444.0699	1,306,160.4857	
	PI	65+03.31	479,467.6120	1,306,131.7139	
	PCC	65+46.43	479,493.7209	1,306,105.2495	N45°23'14.9714"W
MBT-7	PC	65+46.43	479,493.7209	1,306,105.2495	N45°23'14.9714"W
	PI	65+76.49	479,514.8294	1,306,083.8535	
	PCC	66+06.08	479,541.3454	1,306,069.7022	N28°05'18.3137"W
MBT-8	PC	66+59.44	479,588.4199	1,306,044.5790	
	PI	67+12.77	479,636.8302	1,306,022.1373	N24°52'15.9962"W
	PT	67+12.77	479,636.8302	1,306,022.1373	N24°52'15.9962"W
MBT-9	PC	72+08.45	480,086.5326	1,305,813.6680	
	PI	72+93.47	480,163.6733	1,305,777.9077	
	PT	73+74.54	480,248.3307	1,305,785.8208	
	POT	74+93.36	480,366.6298	1,305,796.8785	N5°20'24.1729"E

CURVE DATA						
CURVE	DELTA	Dc	RADIUS	TANGENT	LENGTH	EXTERNAL
MBT-1	21°20'29.31" RT	7°57'27.89"	720.00'	135.66'	268.18'	12.67'
MBT-2	13°03'37.91" RT	10°25'02.69"	550.00'	62.96'	125.37'	3.59'
MBT-3	12°36'16.64" LT	30°58'14.49"	185.00'	20.43'	40.70'	1.12'
MBT-4	15°21'28.88" RT	29°22'56.82"	195.00'	26.29'	52.27'	1.76'
MBT-5	43°42'14.70" LT	40°55'32.00"	140.00'	56.14'	106.79'	10.84'
MBT-6	5°19'16.40" RT	7°09'43.10"	800.00'	37.18'	74.30'	0.86'
MBT-7	17°17'56.66" RT	28°59'55.80"	197.58'	30.06'	59.65'	2.27'
MBT-8	3°13'02.32" RT	3°00'56.04"	1900.00'	53.36'	106.69'	0.75'
MBT-9	30°12'40.17" RT	18°11'20.89"	315.00'	85.03'	166.09'	11.27'

TRAVERSE POINTS				
DESCRIPTION	POINT NO.	NORTH	EAST	ELEVATION
TRV	MN 50	479,708.9511	1,306,018.3974	329.5230
TRV	MN 51	479,523.4994	1,306,113.3543	326.4660
TRV	P&C 52	479,290.6582	1,306,354.8606	321.1140
TRV	P&C 53	478,972.6674	1,306,381.6160	311.8970
TRV	MN 54	478,666.5712	1,306,504.1213	304.6610
TRV	MN 55	478,381.4901	1,306,632.2582	307.3820
TRV	P&C 56	478,026.5701	1,306,743.8878	305.8520
TRV	MN 57	478,336.4402	1,306,605.2362	307.6500
TRV	MN 58	478,646.0492	1,306,477.4557	305.0630
TRV	P&C 59	479,047.6560	1,306,324.5628	314.8480
TRV	MN 60	479,326.4661	1,306,273.4909	326.8180
TRV	MN 61	479,518.6091	1,306,075.3465	327.8060
TRV	MN 62	479,739.4170	1,305,973.7742	330.1750
TRV	MN 63	479,979.5758	1,305,861.9590	332.1380
RTK	RTK MN 2	479,979.8801	1,305,919.8469	332.0405
RTK	RTK MN 21	480,315.5616	1,305,780.4192	336.4890
TRV	METRO SURVEY CONTROL	478,539.7040	1,306,550.8530	305.8100



**CITY OF TAKOMA PARK**  
**METROPOLITAN BRANCH TRAIL UPGRADE**  
**D.C. LINE TO SOUTH OF NEW YORK AVENUE**

GEOMETRY SHEET			
SCALE	1"=50'	DATE	FEBRUARY 2023
CONTRACT NO.	21-093-TLC	DESIGNED BY	AMA
COUNTY	MONTGOMERY	DRAWN BY	MEG
LOGMILE		CHECKED BY	RJG
		F.A.P. NO.	T.B.D.
DRAWING NO.	GS-01	OF	01
SHEET NO.	03	OF	16

**RK&K**  
P: 410.728.2900  
700 East Pratt Street, Suite 500 | Baltimore, MD 21202  
Engineers | Construction Managers | Planners | Scientists  
www.rk.com  
Responsive People | Creative Solutions

MARYLAND COORDINATE SYSTEM  
 NAD 83/2011  
 NAVD 88

E 1306600  
 N 477950

E 1306600  
 N 478150

E 1306800  
 N 478150

**LIMIT OF WORK**  
**METROPOLITAN BRANCH TRAIL**  
**STA. 50+00**

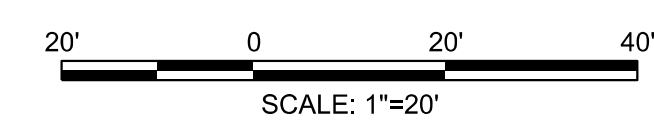
MATCH LINE STA. 52+00 — SEE SHEET HD-02

- NOTES:
1. THE PROPOSED RAISING OF THE TRAIL PROFILE (TYPICAL) AND USE OF POROUS FLEXIBLE PAVING WILL HELP TO AVOID/MINIMIZE IMPACTS TO TREES. TREE CONDITION ASSESSMENTS AND ADDITIONAL PRESERVATION MEASURES WILL BE EVALUATED FOR SUBSEQUENT STAGES OF DESIGN.
  2. STORMWATER MANAGEMENT TREATMENT REQUIREMENTS WILL BE EVALUATED AND LOCATIONS FOR TREATMENTS FOR FACILITIES WILL BE IDENTIFIED DURING SUBSEQUENT DESIGN STAGES.

**CITY OF TAKOMA PARK**  
**METROPOLITAN BRANCH TRAIL UPGRADE**  
**D.C. LINE TO SOUTH OF NEW YORK AVENUE**

**ROADWAY PLAN**

SCALE	1"=20'	DATE	FEBRUARY 2023	CONTRACT NO.	21-093-TLC
DESIGNED BY	AMA	COUNTY	MONTGOMERY		
DRAWN BY	MEG	LOGMILE			
CHECKED BY	RJG				
F.A.P. NO.	T.B.D.				
DRAWING NO.	HD - 01	OF	06	SHEET NO.	04 OF 16



**LEGEND:**

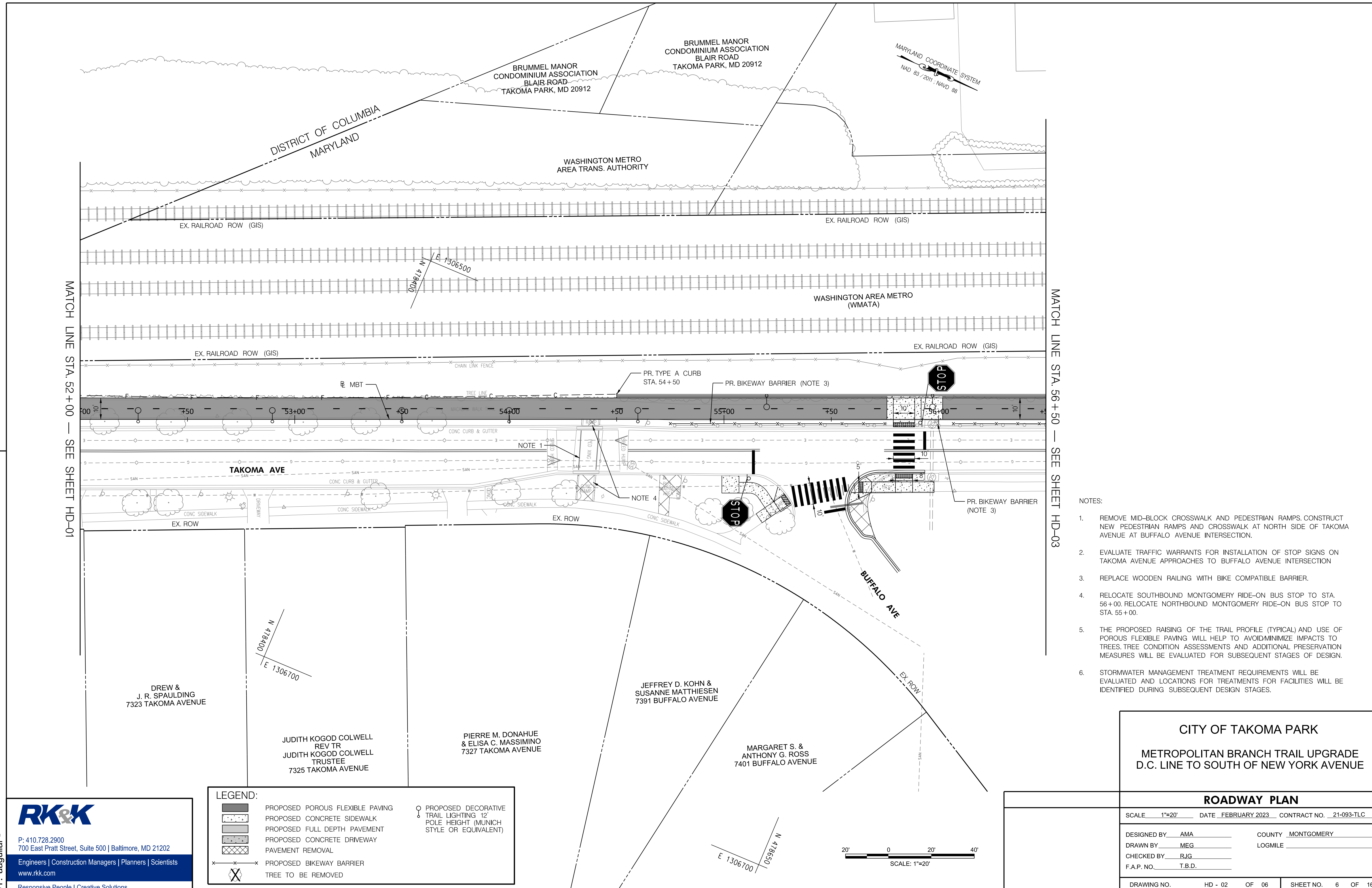
	PROPOSED POROUS FLEXIBLE PAVING		PROPOSED DECORATIVE TRAIL LIGHTING 12' POLE HEIGHT (MUNICH STYLE OR EQUIVALENT)
	PROPOSED CONCRETE SIDEWALK		
	PROPOSED FULL DEPTH PAVEMENT		
	PROPOSED CONCRETE DRIVEWAY		
	PAVEMENT REMOVAL		
	PROPOSED BIKEWAY BARRIER		
	TREE TO BE REMOVED		

**RK&K**  
 P: 410.728.2900  
 700 East Pratt Street, Suite 500 | Baltimore, MD 21202  
 Engineers | Construction Managers | Planners | Scientists  
 www.rk.com  
 Responsive People | Creative Solutions



MATCH LINE STA. 52+00 — SEE SHEET HD-01

MATCH LINE STA. 56+50 — SEE SHEET HD-03



BRUMMEL MANOR CONDOMINIUM ASSOCIATION  
BLAIR ROAD  
TAKOMA PARK, MD 20912

BRUMMEL MANOR CONDOMINIUM ASSOCIATION  
BLAIR ROAD  
TAKOMA PARK, MD 20912

MARYLAND COORDINATE SYSTEM  
NAD 83 / 2011 - NAVD 88

WASHINGTON METRO AREA TRANS. AUTHORITY

EX. RAILROAD ROW (GIS)

EX. RAILROAD ROW (GIS)

WASHINGTON AREA METRO (WMATA)

EX. RAILROAD ROW (GIS)

EX. RAILROAD ROW (GIS)

TAKOMA AVE

BUFFALO AVE

DREW & J. R. SPAULDING  
7323 TAKOMA AVENUE

JUDITH KOGOD COLWELL REV TR  
JUDITH KOGOD COLWELL TRUSTEE  
7325 TAKOMA AVENUE

PIERRE M. DONAHUE & ELISA C. MASSIMINO  
7327 TAKOMA AVENUE

JEFFREY D. KOHN & SUSANNE MATTHIESEN  
7391 BUFFALO AVENUE

MARGARET S. & ANTHONY G. ROSS  
7401 BUFFALO AVENUE

NOTES:

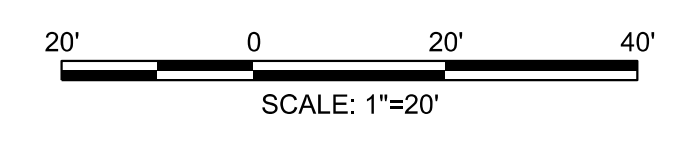
1. REMOVE MID-BLOCK CROSSWALK AND PEDESTRIAN RAMPS. CONSTRUCT NEW PEDESTRIAN RAMPS AND CROSSWALK AT NORTH SIDE OF TAKOMA AVENUE AT BUFFALO AVENUE INTERSECTION.
2. EVALUATE TRAFFIC WARRANTS FOR INSTALLATION OF STOP SIGNS ON TAKOMA AVENUE APPROACHES TO BUFFALO AVENUE INTERSECTION
3. REPLACE WOODEN RAILING WITH BIKE COMPATIBLE BARRIER.
4. RELOCATE SOUTHBOUND MONTGOMERY RIDE-ON BUS STOP TO STA. 56+00. RELOCATE NORTHBOUND MONTGOMERY RIDE-ON BUS STOP TO STA. 55+00.
5. THE PROPOSED RAISING OF THE TRAIL PROFILE (TYPICAL) AND USE OF POROUS FLEXIBLE PAVING WILL HELP TO AVOID/MINIMIZE IMPACTS TO TREES. TREE CONDITION ASSESSMENTS AND ADDITIONAL PRESERVATION MEASURES WILL BE EVALUATED FOR SUBSEQUENT STAGES OF DESIGN.
6. STORMWATER MANAGEMENT TREATMENT REQUIREMENTS WILL BE EVALUATED AND LOCATIONS FOR FACILITIES WILL BE IDENTIFIED DURING SUBSEQUENT DESIGN STAGES.

CITY OF TAKOMA PARK  
METROPOLITAN BRANCH TRAIL UPGRADE  
D.C. LINE TO SOUTH OF NEW YORK AVENUE

**RK&K**  
P: 410.728.2900  
700 East Pratt Street, Suite 500 | Baltimore, MD 21202  
Engineers | Construction Managers | Planners | Scientists  
www.rk.com  
Responsive People | Creative Solutions

**LEGEND:**

	PROPOSED POROUS FLEXIBLE PAVING		PROPOSED DECORATIVE TRAIL LIGHTING 12' POLE HEIGHT (MUNICH STYLE OR EQUIVALENT)
	PROPOSED CONCRETE SIDEWALK		
	PROPOSED FULL DEPTH PAVEMENT		
	PROPOSED CONCRETE DRIVEWAY		
	PAVEMENT REMOVAL		
	PROPOSED BIKEWAY BARRIER		
	TREE TO BE REMOVED		



ROADWAY PLAN			
SCALE	1"=20'	DATE	FEBRUARY 2023
		CONTRACT NO.	21-093-TLC
DESIGNED BY	AMA	COUNTY	MONTGOMERY
DRAWN BY	MEG	LOGMILE	
CHECKED BY	RJG		
F.A.P. NO.	T.B.D.		
DRAWING NO.	HD - 02	OF	06
		SHEET NO.	6 OF 16

PLOTTED: 2/21/2023  
FILE: \\ad.rk.com\ts\Cloud\Projects\2021\21270\_TLG\Task 4.1 - Takoma Park MBT\CADD\Plan\HD-P002\_MBT.dgn

BY: aagular -

N 478/50  
E 1306250

MARYLAND COORDINATE SYSTEM  
NAD 83 / 2011 ; NAVD 88

WASHINGTON  
AREA METRO (WMATA)

EX. RAILROAD ROW (GIS)

EX. RAILROAD ROW (GIS)

WASHINGTON  
AREA METRO (WMATA)

EX. RAILROAD ROW (GIS)

EX. RAILROAD ROW (GIS)

PR. TYPE A CURB  
STA. 56+65

PR. BIKEWAY BARRIER (NOTE 1)

WOOD FENCE

CHAIN LINK FENCE

TREE LINE

MBT

REMOVE EX. WOODEN RAILING

TAKOMA AVE

CONC CURB & GUTTER

CONC CURB & GUTTER

CONC SIDEWALK

+50

+50

+50

PARKING METERS

N 478/50  
E 1306500

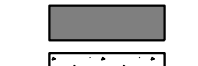
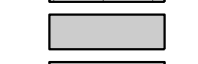
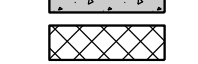
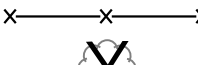
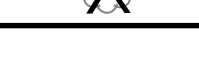



MATCH LINE STA. 56+50 — SEE SHEET HD-02

MATCH LINE STA. 61+00 — SEE SHEET HD-04

NOTES:

1. REPLACE WOODEN RAILING WITH BIKE COMPATIBLE BARRIER.
2. THE PROPOSED RAISING OF THE TRAIL PROFILE (TYPICAL) AND USE OF POROUS FLEXIBLE PAVING WILL HELP TO AVOID MINIMIZE IMPACTS TO TREES. TREE CONDITION ASSESSMENTS AND ADDITIONAL PRESERVATION MEASURES WILL BE EVALUATED FOR SUBSEQUENT STAGES OF DESIGN.
3. STORMWATER MANAGEMENT TREATMENT REQUIREMENTS WILL BE EVALUATED AND LOCATIONS FOR TREATMENTS FOR FACILITIES WILL BE IDENTIFIED DURING SUBSEQUENT DESIGN STAGES.

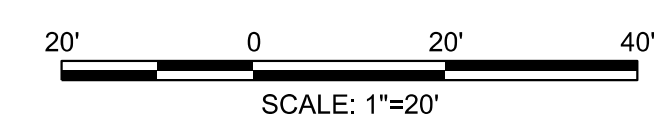
LEGEND:

-  PROPOSED POROUS FLEXIBLE PAVING
-  PROPOSED CONCRETE SIDEWALK
-  PROPOSED FULL DEPTH PAVEMENT
-  PROPOSED CONCRETE DRIVEWAY
-  PAVEMENT REMOVAL
-  PROPOSED BIKEWAY BARRIER
-  TREE TO BE REMOVED
-  PROPOSED DECORATIVE TRAIL LIGHTING 12' POLE HEIGHT (MUNICH STYLE OR EQUIVALENT)

CITY OF TAKOMA PARK

BELLE ZIEGLER PARK

EX. ROW

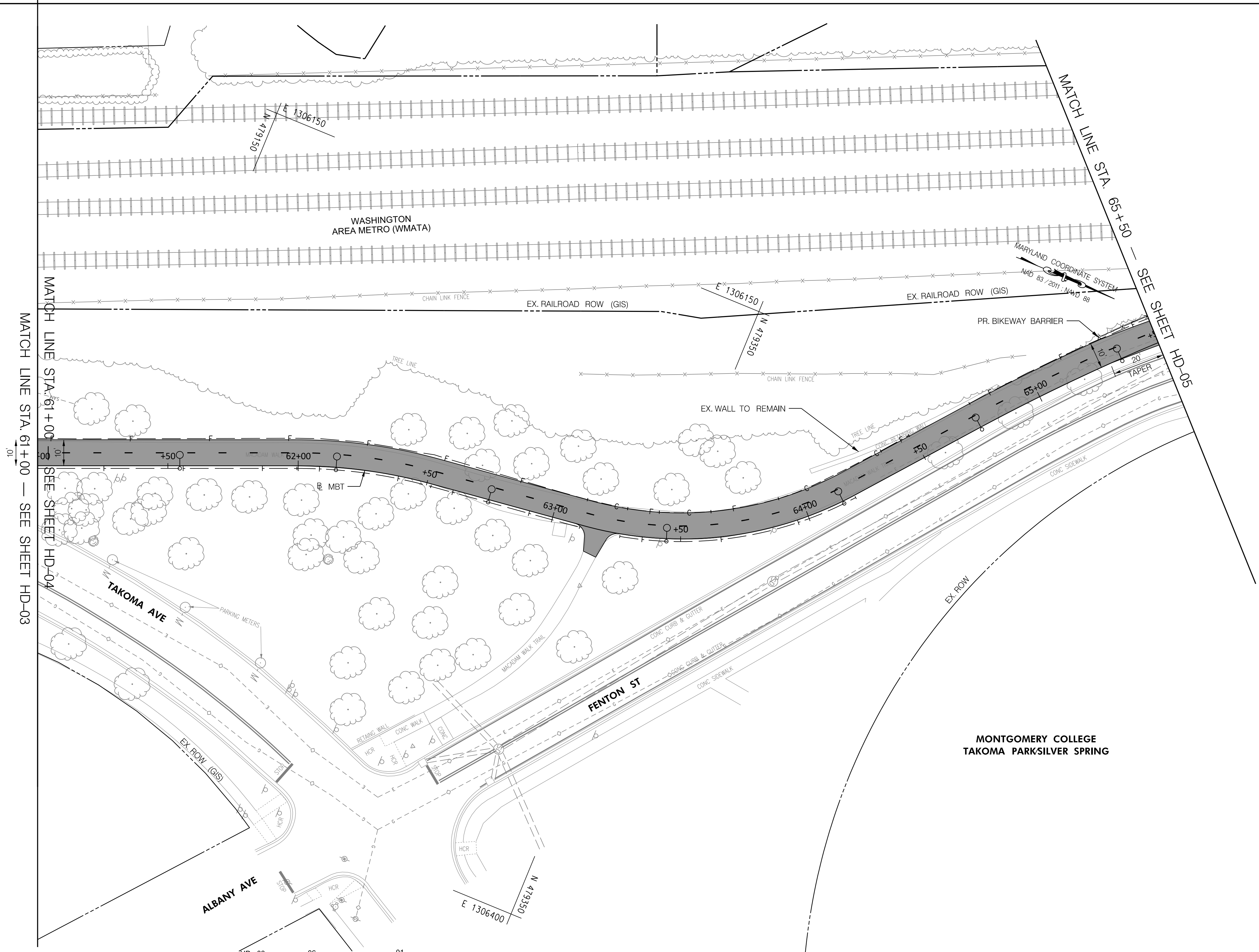


CITY OF TAKOMA PARK  
METROPOLITAN BRANCH TRAIL UPGRADE  
D.C. LINE TO SOUTH OF NEW YORK AVENUE

ROADWAY PLAN

SCALE	1"=20'	DATE	FEBRUARY 2023	CONTRACT NO.	21-093-TLC
DESIGNED BY	AMA	COUNTY	MONTGOMERY	LOGMILE	
DRAWN BY	MEG				
CHECKED BY	RJG				
F.A.P. NO.	T.B.D.				
DRAWING NO.	HD - 03	OF	06	SHEET NO.	01 OF 16

**RK&K**  
P: 410.728.2900  
700 East Pratt Street, Suite 500 | Baltimore, MD 21202  
Engineers | Construction Managers | Planners | Scientists  
www.rk.com  
Responsive People | Creative Solutions



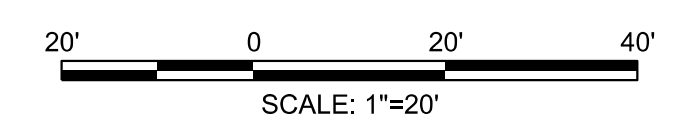
- NOTES:
1. STORMWATER MANAGEMENT TREATMENT REQUIREMENTS WILL BE EVALUATED AND LOCATIONS FOR TREATMENTS FOR FACILITIES WILL BE IDENTIFIED DURING SUBSEQUENT DESIGN STAGES.

**CITY OF TAKOMA PARK**  
**METROPOLITAN BRANCH TRAIL UPGRADE**  
**D.C. LINE TO SOUTH OF NEW YORK AVENUE**

ROADWAY PLAN		
SCALE	1"=20'	DATE FEBRUARY 2023 CONTRACT NO. 21-093-TLC
DESIGNED BY	AMA	COUNTY MONTGOMERY
DRAWN BY	MEG	LOGMILE
CHECKED BY	RJG	
F.A.P. NO.	T.B.D.	
DRAWING NO.	HD - 04	OF 06 SHEET NO. 01 OF 16

**LEGEND:**

	PROPOSED POROUS FLEXIBLE PAVING		PROPOSED DECORATIVE TRAIL LIGHTING 12' POLE HEIGHT (MUNICH STYLE OR EQUIVALENT)
	PROPOSED CONCRETE SIDEWALK		
	PROPOSED FULL DEPTH PAVEMENT		
	PROPOSED CONCRETE DRIVEWAY		
	PAVEMENT REMOVAL		
	PROPOSED BIKEWAY BARRIER		
	TREE TO BE REMOVED		



**RK&K**  
 P: 410.728.2900  
 700 East Pratt Street, Suite 500 | Baltimore, MD 21202  
 Engineers | Construction Managers | Planners | Scientists  
 www.rk.com  
 Responsive People | Creative Solutions

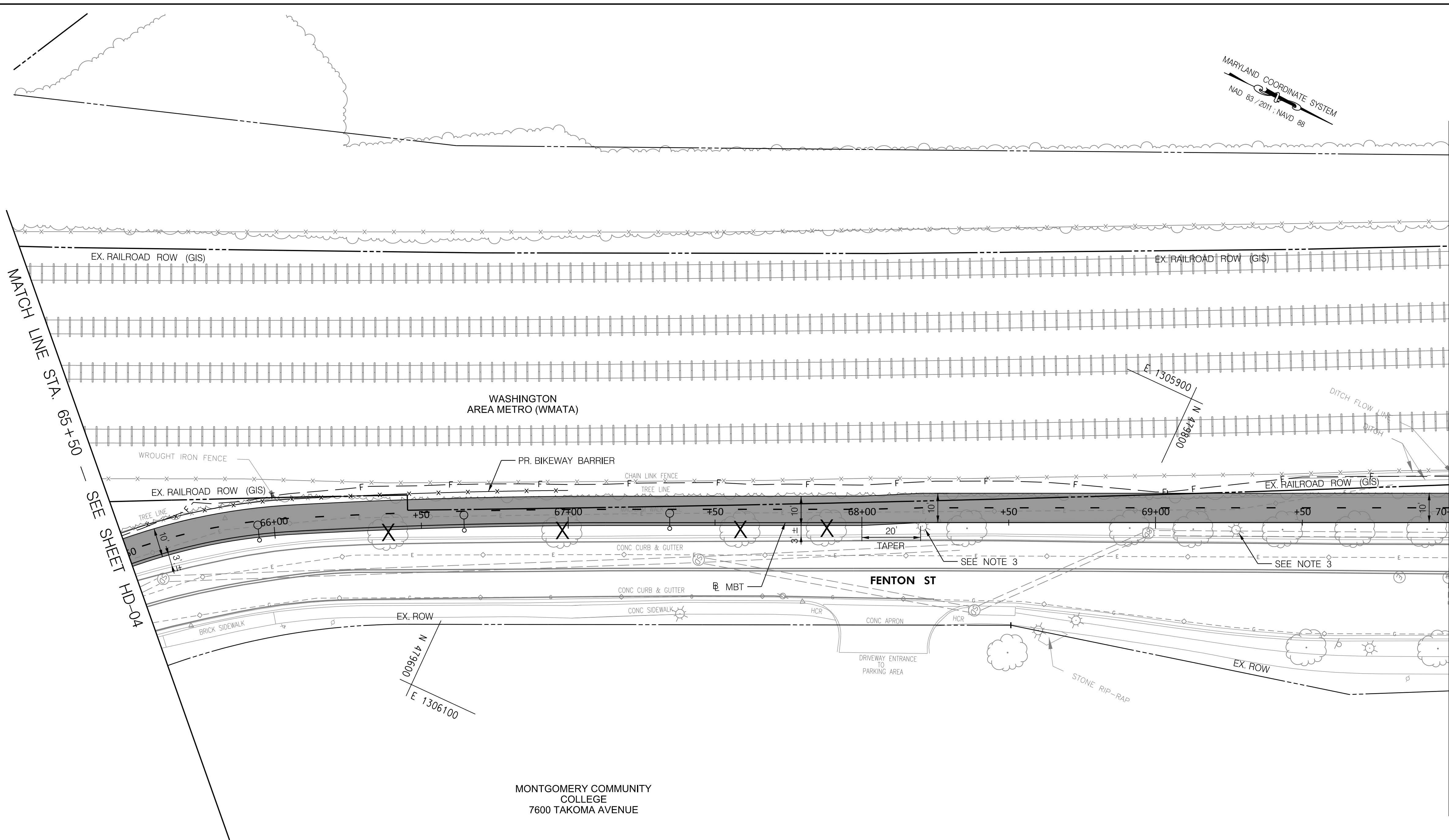
BY: aguilera -



MARYLAND COORDINATE SYSTEM  
 NAD 83 / 2011 - NAVD 88

MATCH LINE STA. 65+50 — SEE SHEET HD-04

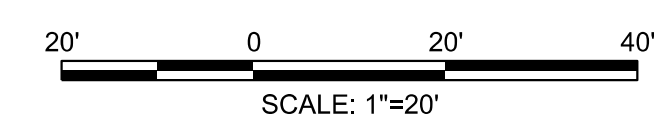
MATCH LINE STA. 70+00 — SEE SHEET HD-06



- NOTES:
1. REPLACE WROUGHT IRON FENCE WITH BIKE COMPATIBLE BARRIER.
  2. THE PROPOSED RAISING OF THE TRAIL PROFILE (TYPICAL) AND USE OF POROUS FLEXIBLE PAVING WILL HELP TO AVOID/MINIMIZE IMPACTS TO TREES. TREE CONDITION ASSESSMENTS AND ADDITIONAL PRESERVATION MEASURES WILL BE EVALUATED FOR SUBSEQUENT STAGES OF DESIGN.
  3. REPLACE EXISTING LIGHT POLES WITH NEW ORNAMENTAL TRAIL LIGHTING, MUNICH EUROTIQUE OR EQUIVALENT.
  4. STORMWATER MANAGEMENT TREATMENT REQUIREMENTS WILL BE EVALUATED AND LOCATIONS FOR TREATMENTS FOR FACILITIES WILL BE IDENTIFIED DURING SUBSEQUENT DESIGN STAGES.

**LEGEND:**

	PROPOSED POROUS FLEXIBLE PAVING		PROPOSED DECORATIVE TRAIL LIGHTING 12' POLE HEIGHT (MUNICH STYLE OR EQUIVALENT)
	PROPOSED CONCRETE SIDEWALK		
	PROPOSED FULL DEPTH PAVEMENT		
	PROPOSED CONCRETE DRIVEWAY		
	PAVEMENT REMOVAL		
	PROPOSED BIKEWAY BARRIER		
	TREE TO BE REMOVED		



**CITY OF TAKOMA PARK**  
**METROPOLITAN BRANCH TRAIL UPGRADE**  
**D.C. LINE TO SOUTH OF NEW YORK AVENUE**

ROADWAY PLAN			
SCALE	1"=20'	DATE	FEBRUARY 2023
CONTRACT NO.	21-093-TLC	COUNTY	MONTGOMERY
DESIGNED BY	AMA	LOGMILE	
DRAWN BY	MEG		
CHECKED BY	RJG		
F.A.P. NO.	T.B.D.		
DRAWING NO.	HD - 05	OF	06
SHEET NO.	07	OF	16

**RK&K**  
 P: 410.728.2900  
 700 East Pratt Street, Suite 500 | Baltimore, MD 21202  
 Engineers | Construction Managers | Planners | Scientists  
 www.rkk.com  
 Responsive People | Creative Solutions

WASHINGTON METRO  
 AREA TRANSIT AUTHORITY  
 JESSUP BLAIR DRIVE  
 TAKOMA PARK, MD 20912

WASHINGTON AREA METRO  
 (WMATA)

WASHINGTON  
 AREA METRO (WMATA)

MONTGOMERY COMMUNITY  
 COLLEGE  
 7676 FENTON STREET  
 SILVER SPRING, MD 20910

MONTGOMERY COMMUNITY  
 COLLEGE  
 7600 TAKOMA AVENUE

MONTGOMERY COMMUNITY  
 COLLEGE  
 NEW YORK AVENUE  
 SILVER SPRING, MD 20912

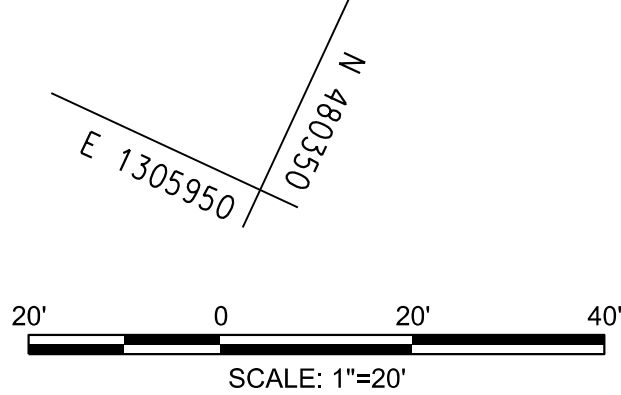
CITY OF TAKOMA PARK  
 METROPOLITAN BRANCH TRAIL UPGRADE  
 D.C. LINE TO SOUTH OF NEW YORK AVENUE

**LIMIT OF WORK**  
**METROPOLITAN BRANCH TRAIL**  
**STA. 73+28**

- NOTES:
1. THE PROPOSED RAISING OF THE TRAIL PROFILE (TYPICAL) AND USE OF POROUS FLEXIBLE PAVING WILL HELP TO AVOID/MINIMIZE IMPACTS TO TREES. TREE CONDITION ASSESSMENTS AND ADDITIONAL PRESERVATION MEASURES WILL BE EVALUATED FOR SUBSEQUENT STAGES OF DESIGN.
  2. REPLACE EXISTING LIGHT POLES WITH NEW ORNAMENTAL TRAIL LIGHTING, MUNICH EUROTIQUE OR EQUIVALENT.
  3. STORMWATER MANAGEMENT TREATMENT REQUIREMENTS WILL BE EVALUATED AND LOCATIONS FOR TREATMENTS FOR FACILITIES WILL BE IDENTIFIED DURING SUBSEQUENT DESIGN STAGES.

**LEGEND:**

	PROPOSED POROUS FLEXIBLE PAVING		PROPOSED DECORATIVE TRAIL LIGHTING 12' POLE HEIGHT (MUNICH STYLE OR EQUIVALENT)
	PROPOSED CONCRETE SIDEWALK		
	PROPOSED FULL DEPTH PAVEMENT		
	PROPOSED CONCRETE DRIVEWAY		
	PAVEMENT REMOVAL		
	PROPOSED BIKEWAY BARRIER		
	TREE TO BE REMOVED		



**ROADWAY PLAN**

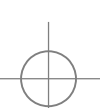
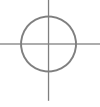
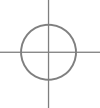
SCALE	1"=20'	DATE	FEBRUARY 2023	CONTRACT NO.	21-093-TLC
DESIGNED BY	AMA	COUNTY	MONTGOMERY		
DRAWN BY	MEG	LOGMILE			
CHECKED BY	RJG				
F.A.P. NO.	T.B.D.				
DRAWING NO.	HD - 06	OF	06	SHEET NO.	09 OF 16

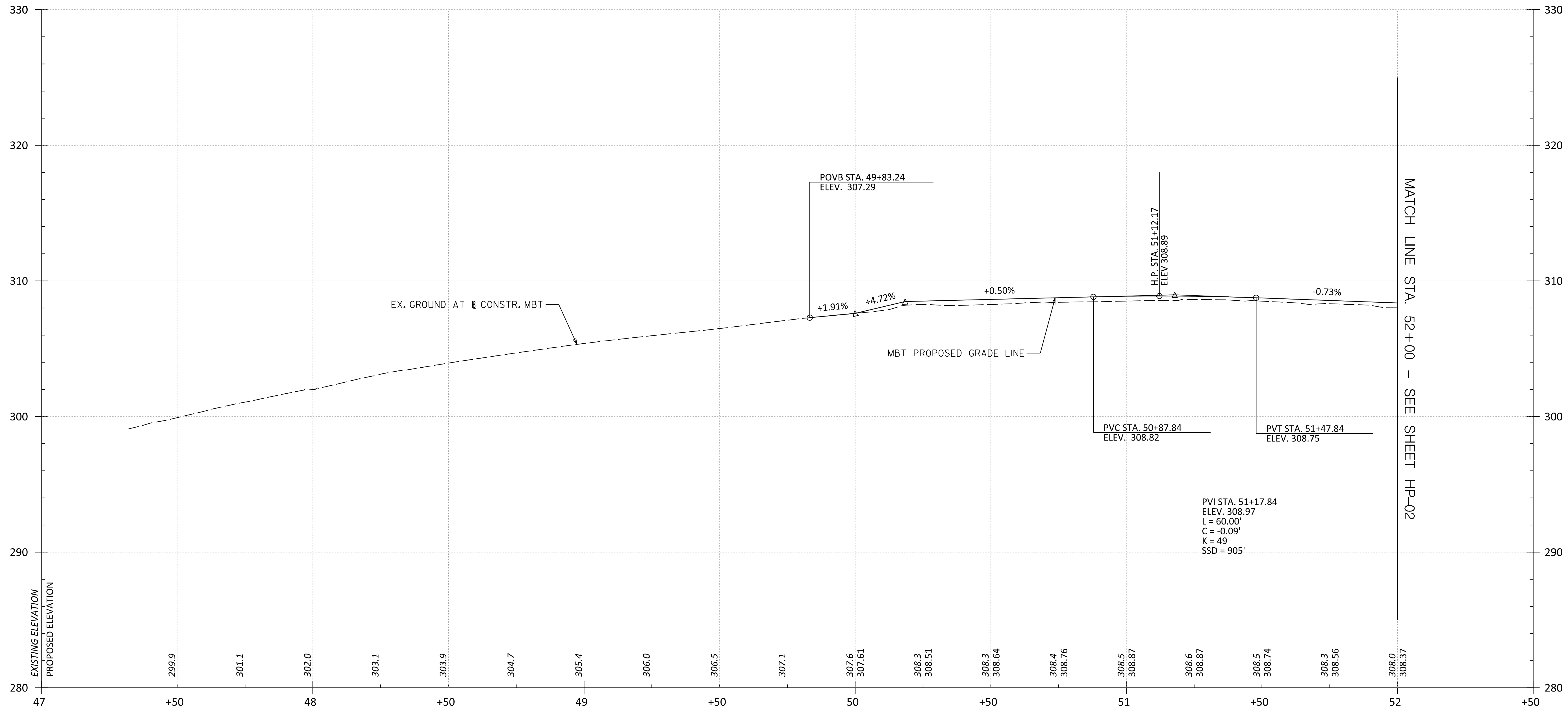
PLOTTED: 2/21/2023  
 FILE: \\ad.rkk.com\fileshare\Projects\2021\210720\_OGTLT\Task 4.1 - Takoma Park MBT\CADD\Plan\HD-P006\_MBT.dgn

BY: aagular -

**RK&K**  
 P: 410.728.2900  
 700 East Pratt Street, Suite 500 | Baltimore, MD 21202  
 Engineers | Construction Managers | Planners | Scientists  
 www.rkk.com  
 Responsive People | Creative Solutions

MATCH LINE STA. 70+00 — SEE SHEET HD-05





PROFILE - METROPOLITAN BRANCH TRAIL

HORIZONTAL SCALE: 1" = 20'  
 VERTICAL SCALE: 1" = 4'

CITY OF TAKOMA PARK  
 METROPOLITAN BRANCH TRAIL UPGRADE  
 D.C. LINE TO SOUTH OF NEW YORK AVENUE

PROFILE SHEET

SCALE 1"=20' DATE FEBRUARY 2023 CONTRACT NO. 21-093-TLC

DESIGNED BY AMA COUNTY MONTGOMERY

DRAWN BY MEG LOGMILE

CHECKED BY R/JG

F.A.P. NO. T.B.D.

DRAWING NO. HP - 01 OF 06 SHEET NO. 11 OF 16

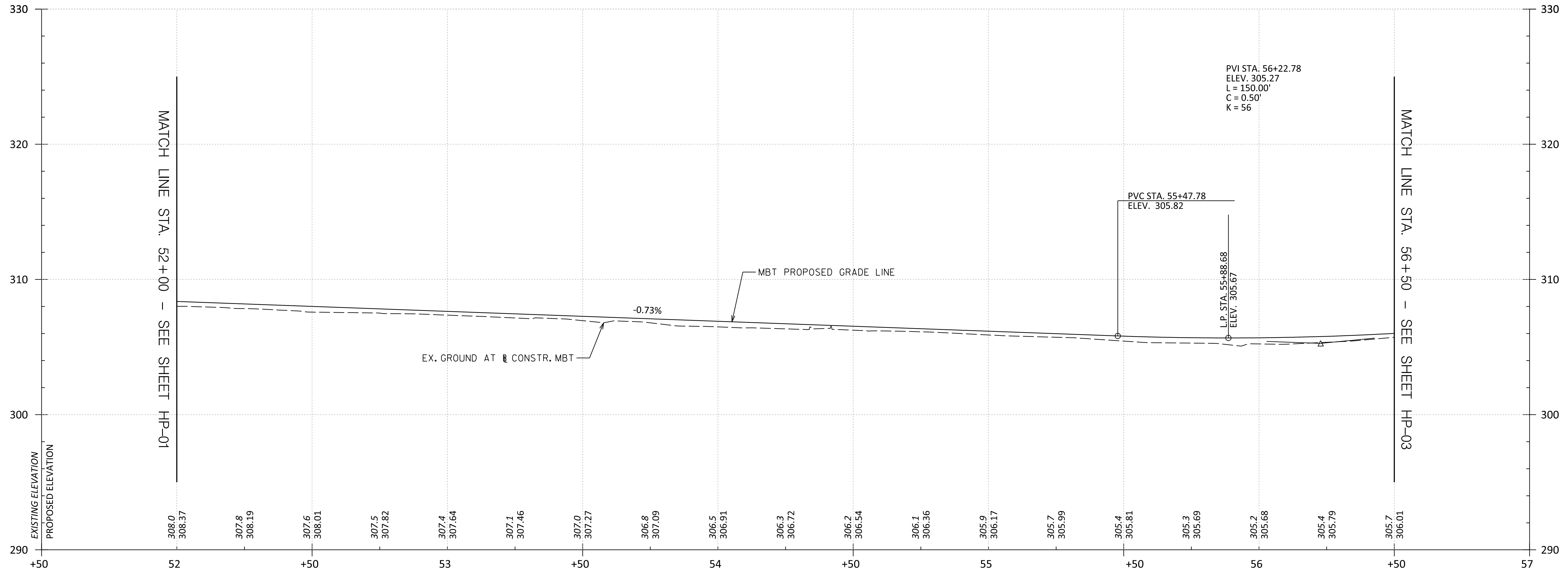


P: 410.728.2900  
 700 East Pratt Street, Suite 500 | Baltimore, MD 21202

Engineers | Construction Managers | Planners | Scientists  
 www.rkk.com

Responsive People | Creative Solutions

BY: aagular -



PROFILE - METROPOLITAN BRANCH TRAIL

HORIZONTAL SCALE: 1" = 20'  
 VERTICAL SCALE: 1" = 4'

CITY OF TAKOMA PARK  
 METROPOLITAN BRANCH TRAIL UPGRADE  
 D.C. LINE TO SOUTH OF NEW YORK AVENUE

PROFILE SHEET

SCALE 1"=20' DATE FEBRUARY 2023 CONTRACT NO. 21-093-TLC

DESIGNED BY AMA COUNTY MONTGOMERY  
 DRAWN BY MEG LOGMILE  
 CHECKED BY R/JG  
 F.A.P. NO. T.B.D.

DRAWING NO. HP - 02 OF 06 SHEET NO. 12 OF 16

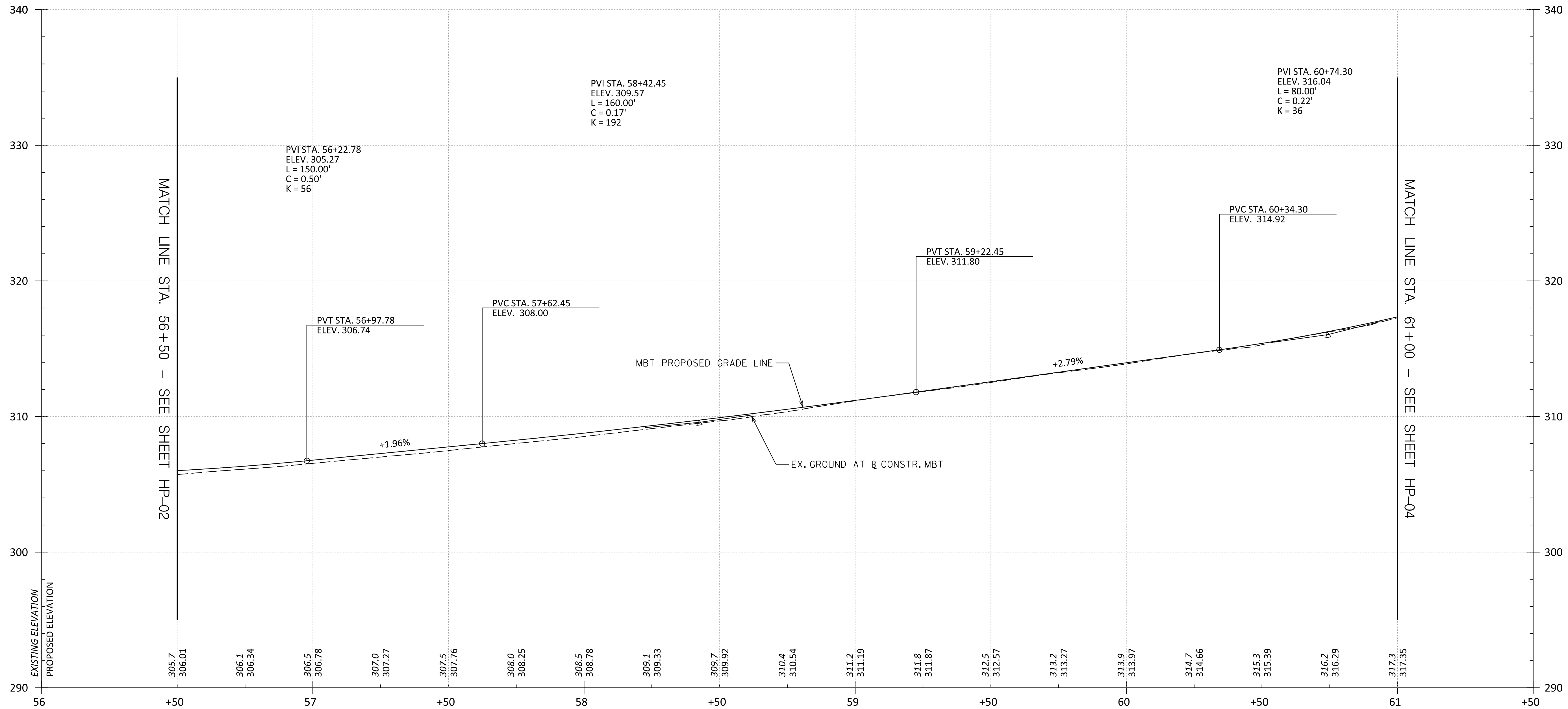


P: 410.728.2900  
 700 East Pratt Street, Suite 500 | Baltimore, MD 21202

Engineers | Construction Managers | Planners | Scientists  
 www.rkk.com

Responsive People | Creative Solutions

BY: aguilera -



**PROFILE - METROPOLITAN BRANCH TRAIL**

HORIZONTAL SCALE: 1" = 20'  
VERTICAL SCALE: 1" = 4'

**CITY OF TAKOMA PARK**  
**METROPOLITAN BRANCH TRAIL UPGRADE**  
**D.C. LINE TO SOUTH OF NEW YORK AVENUE**

**PROFILE SHEET**

SCALE 1"=20' DATE FEBRUARY 2023 CONTRACT NO. 21-093-TLC

DESIGNED BY AMA COUNTY MONTGOMERY  
DRAWN BY MEG LOGMILE  
CHECKED BY R/JG  
F.A.P. NO. T.B.D.

DRAWING NO. HP - 03 OF 06 SHEET NO. 13 OF 16

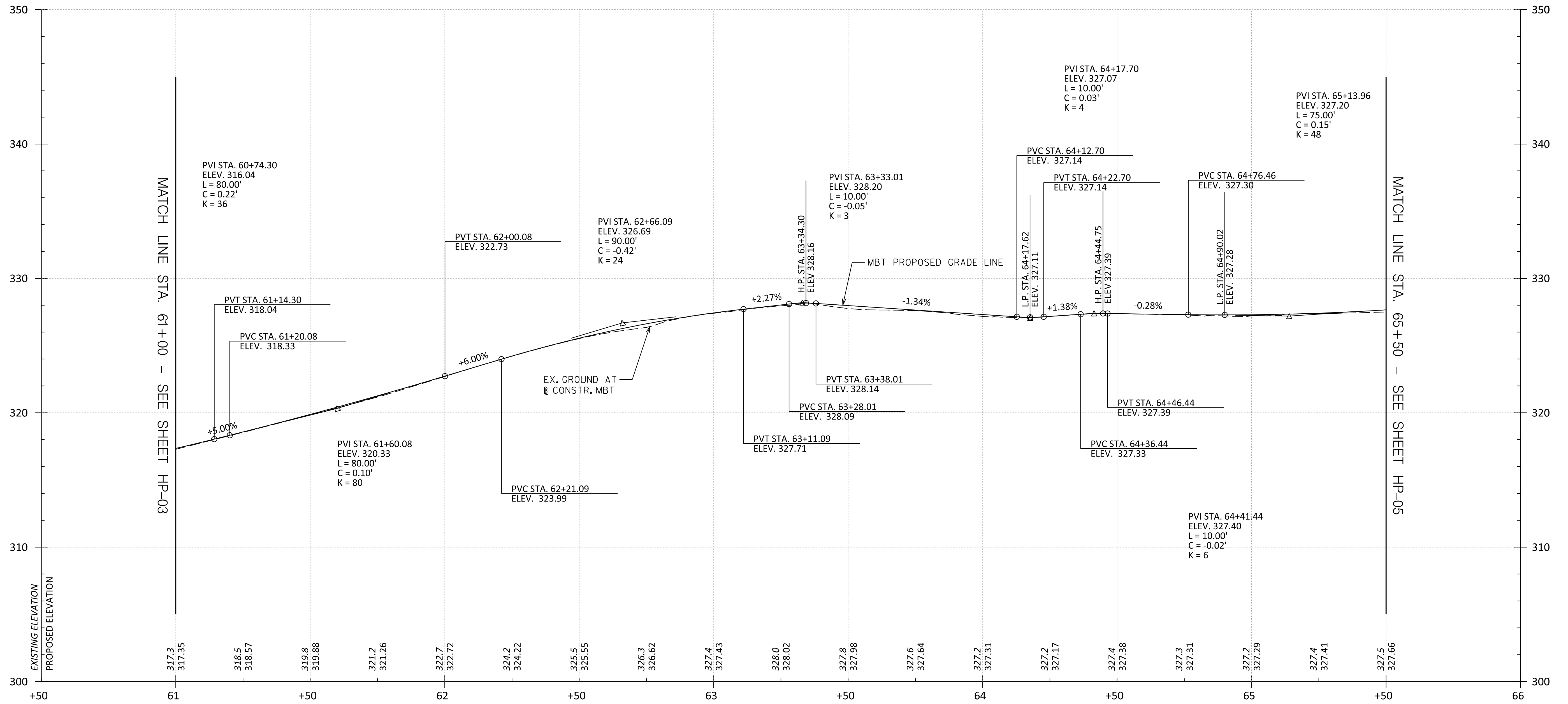


P: 410.728.2900  
700 East Pratt Street, Suite 500 | Baltimore, MD 21202

Engineers | Construction Managers | Planners | Scientists  
www.rkk.com

Responsive People | Creative Solutions

BY: aguilera -



PROFILE - METROPOLITAN BRANCH TRAIL  
 HORIZONTAL SCALE: 1" = 20'  
 VERTICAL SCALE: 1" = 4'

CITY OF TAKOMA PARK  
 METROPOLITAN BRANCH TRAIL UPGRADE  
 D.C. LINE TO SOUTH OF NEW YORK AVENUE

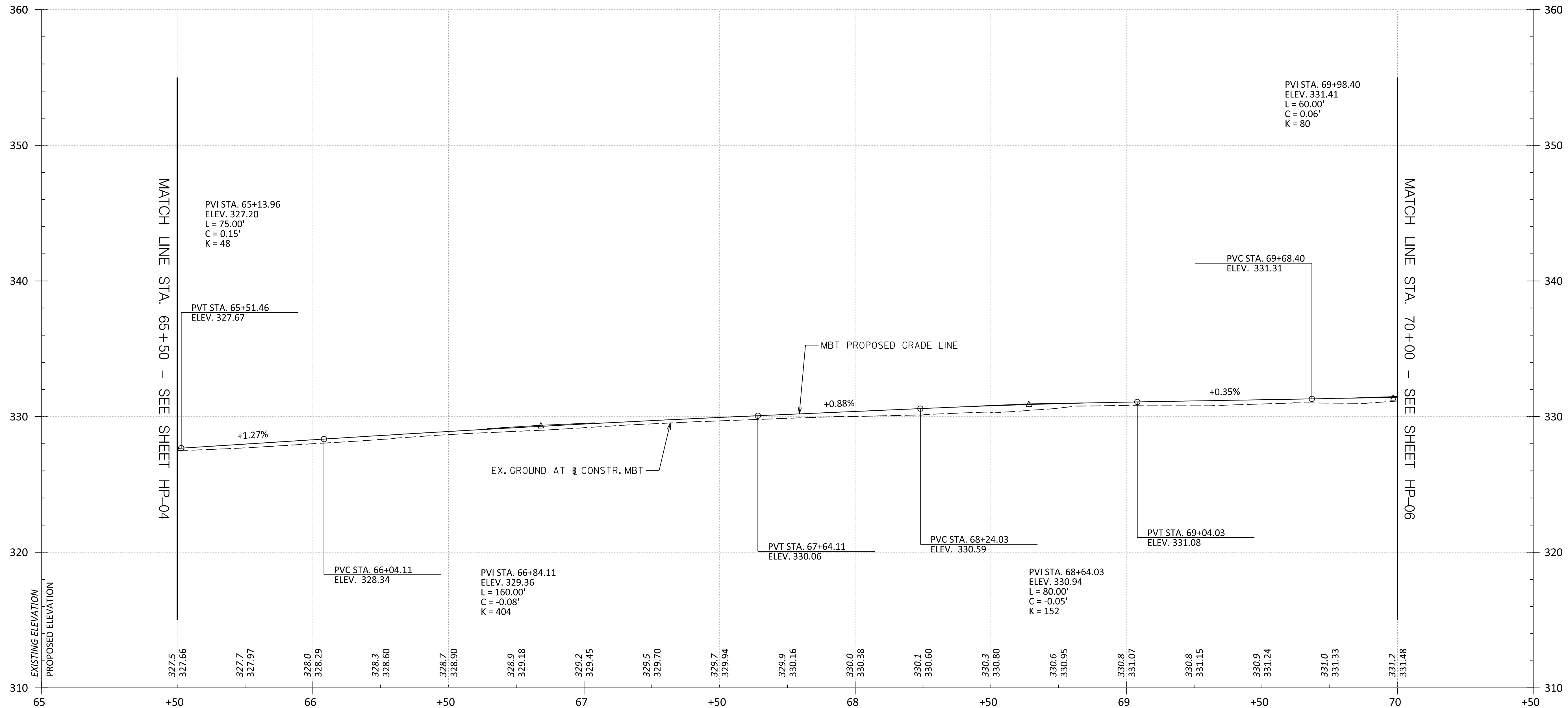
**PROFILE SHEET**

SCALE	1"=20'	DATE	FEBRUARY 2023	CONTRACT NO.	21-093-TLC
DESIGNED BY	AMA	COUNTY	MONTGOMERY		
DRAWN BY	MEG	LOGMILE			
CHECKED BY	RJG				
F.A.P. NO.	T.B.D.				
DRAWING NO.	HP - 04	OF	06	SHEET NO.	14 OF 16

**RK&K**  
 P: 410.728.2900  
 700 East Pratt Street, Suite 500 | Baltimore, MD 21202  
 Engineers | Construction Managers | Planners | Scientists  
 www.rkk.com  
 Responsive People | Creative Solutions

BY: aguilera -

PLOTTED: 2/21/2023  
 FILE: \\ad.rkk.com\fileshare\Projects\2021\121270\_OGTL\Task 4.1 - Takoma Park MBT\CADD\Plan\HP-V004\_MBT.dgn



PROFILE - METROPOLITAN BRANCH TRAIL

HORIZONTAL SCALE: 1" = 20'  
 VERTICAL SCALE: 1" = 4'

CITY OF TAKOMA PARK  
 METROPOLITAN BRANCH TRAIL UPGRADE  
 D.C. LINE TO SOUTH OF NEW YORK AVENUE

PROFILE SHEET

SCALE	1"=20'	DATE	FEBRUARY 2023	CONTRACT NO.	21-093-TLC
DESIGNED BY	AMA	COUNTY	MONTGOMERY		
DRAWN BY	MEG	LOGMILE			
CHECKED BY	RJG				
F.A.P. NO.	T.B.D.				
DRAWING NO.	HP - 05	OF	06	SHEET NO.	15 OF 16

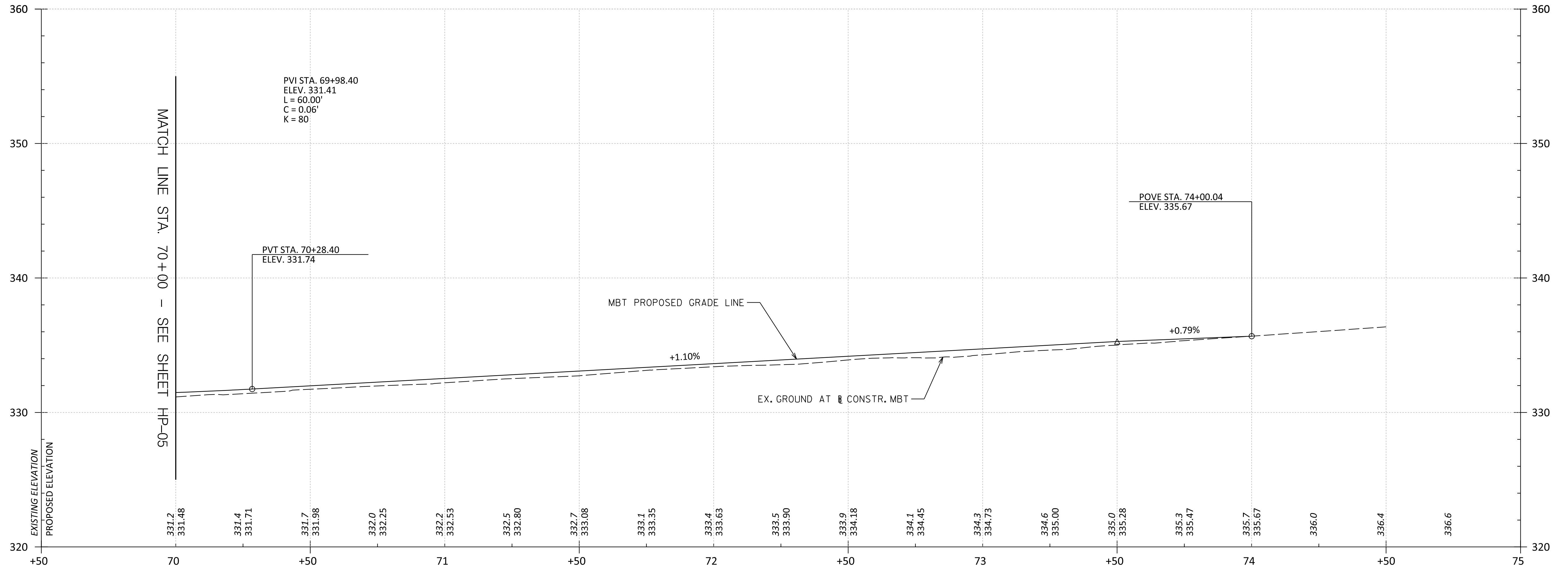


P: 410.728.2900  
 700 East Pratt Street, Suite 500 | Baltimore, MD 21202

Engineers | Construction Managers | Planners | Scientists  
 www.rkk.com

Responsive People | Creative Solutions

BY: aguilera -



PROFILE - METROPOLITAN BRANCH TRAIL

HORIZONTAL SCALE: 1" = 20'  
 VERTICAL SCALE: 1" = 4'

CITY OF TAKOMA PARK  
 METROPOLITAN BRANCH TRAIL UPGRADE  
 D.C. LINE TO SOUTH OF NEW YORK AVENUE

PROFILE SHEET

SCALE 1"=20' DATE FEBRUARY 2023 CONTRACT NO. 21-093-TLC

DESIGNED BY AMA COUNTY MONTGOMERY  
 DRAWN BY MEG LOGMILE  
 CHECKED BY R/JG  
 F.A.P. NO. T.B.D.

DRAWING NO. HP - 06 OF 06 SHEET NO. 16 OF 16



P: 410.728.2900  
 700 East Pratt Street, Suite 500 | Baltimore, MD 21202

Engineers | Construction Managers | Planners | Scientists  
 www.rkk.com

Responsive People | Creative Solutions

BY: aguilera -