

## **Appendix H:**

# **Schools and Community Facilities**



**Takoma Park**  
MINOR MASTER PLAN AMENDMENT

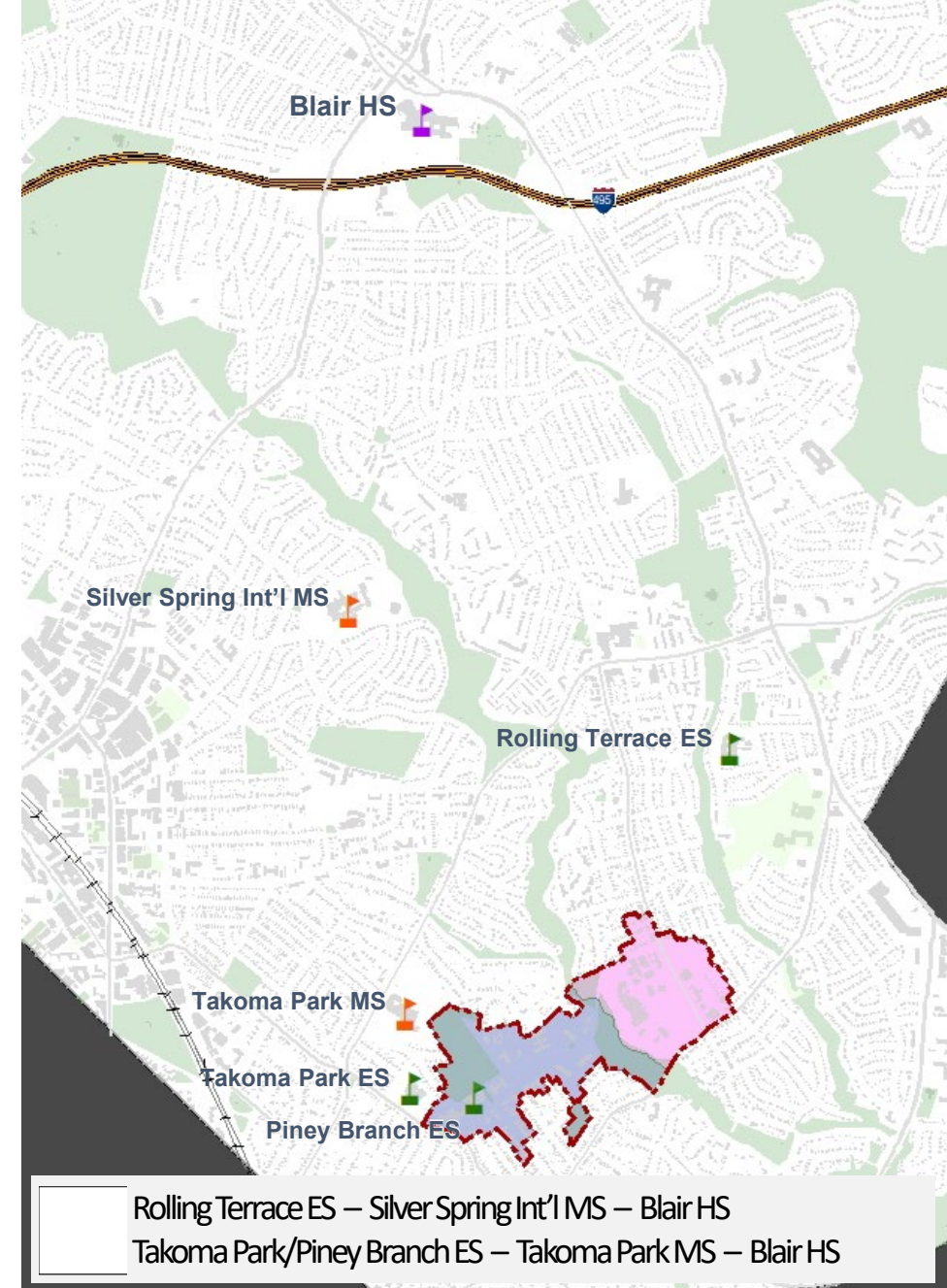
# How Are We Supported?

Community Resources, Facilities and Schools

# Public Schools (K-12)

The plan area is served by the following MCPS schools:

- High School
  - Blair HS (Downcounty Consortium)
- Middle Schools
  - Silver Spring International MS
  - Takoma Park MS
- Elementary Schools
  - Rolling Terrace ES
  - Takoma Park ES (K-2) / Piney Branch (3-5) ES



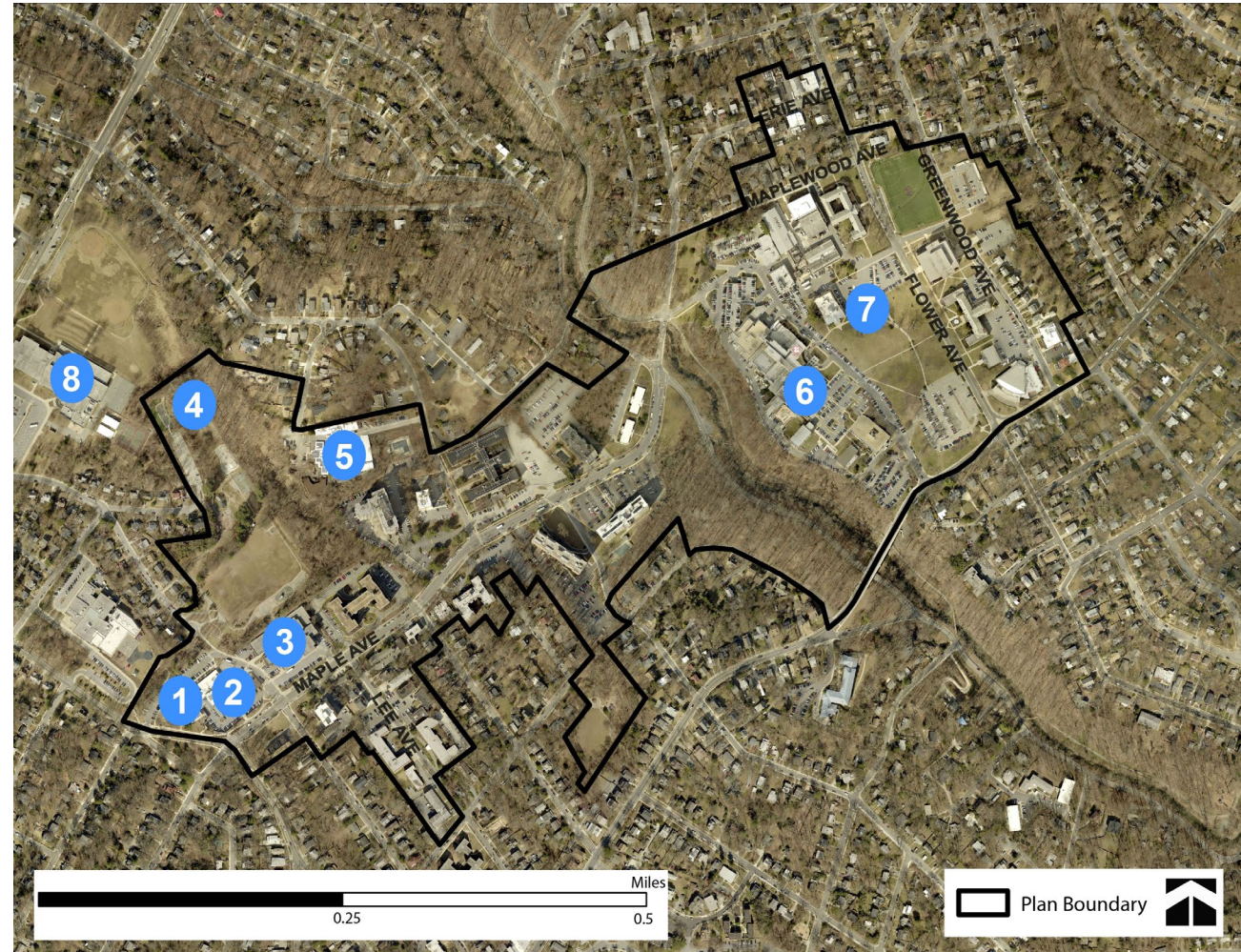


# Community Resources

1. Takoma Park Maryland Library
2. Takoma Park Community Center – Sam Abbott Citizens' Center
3. Pool – Piney Branch Elementary School
4. Heffner Park Community Center
5. Public Works Facilities
6. Washington Adventist Hospital
7. Washington Adventist University
8. Takoma Park Middle School (outside of plan boundary)

## Outside of plan boundary (Not shown on map)

- Takoma Park Volunteer Fire Department
- Takoma Park Recreation Center



## **MCPS' Long-Term Space Planning Strategies and Standards**

: MCPS identifies where space shortages are projected to occur and plans how to address them through their CIP process. They annually review the enrollment projection of schools in the sixth year of each CIP planning period in comparison to the scheduled program capacity, and if the projected enrollment exceeds the scheduled program capacity, they may consider one of the following strategies to address the overutilization:

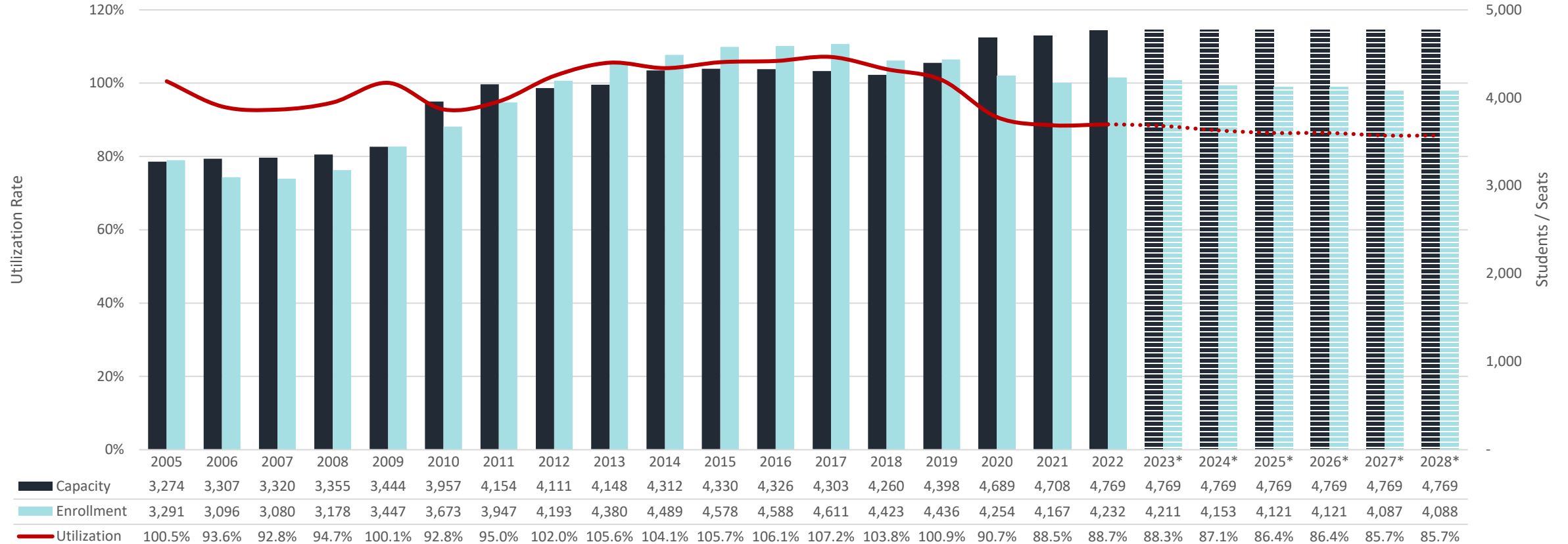
- Determine if space is available at adjacent or nearby schools and reassign students to a school(s) with space available
- Consider an addition at the school or at nearby schools where students would be reassigned to. For a classroom addition to be considered, the enrollment would need to exceed capacity by a minimum of 92 seats in the sixth year of the CIP period for an elementary school, 150 seats for a middle school, and 200 seats for a high school.
- Consider the opening of a new school if reassignments or classroom additions at existing schools is deemed insufficient to address the projected enrollment. A new school may be considered if the collective deficit of space exceeds 500-600 seats for elementary schools, 800 seats for middle schools, and 1600 seats for high schools.

The latest projections from MCPS' Amendments to the FY 2023-2028 CIP indicate that the Plan area and Blair cluster will have nearly 700 seats available at the elementary school level, over 400 seats available at the middle school level, and just over 100 seats available at the high school level.

# Elementary School Utilization Trend/Projections of Plan Area

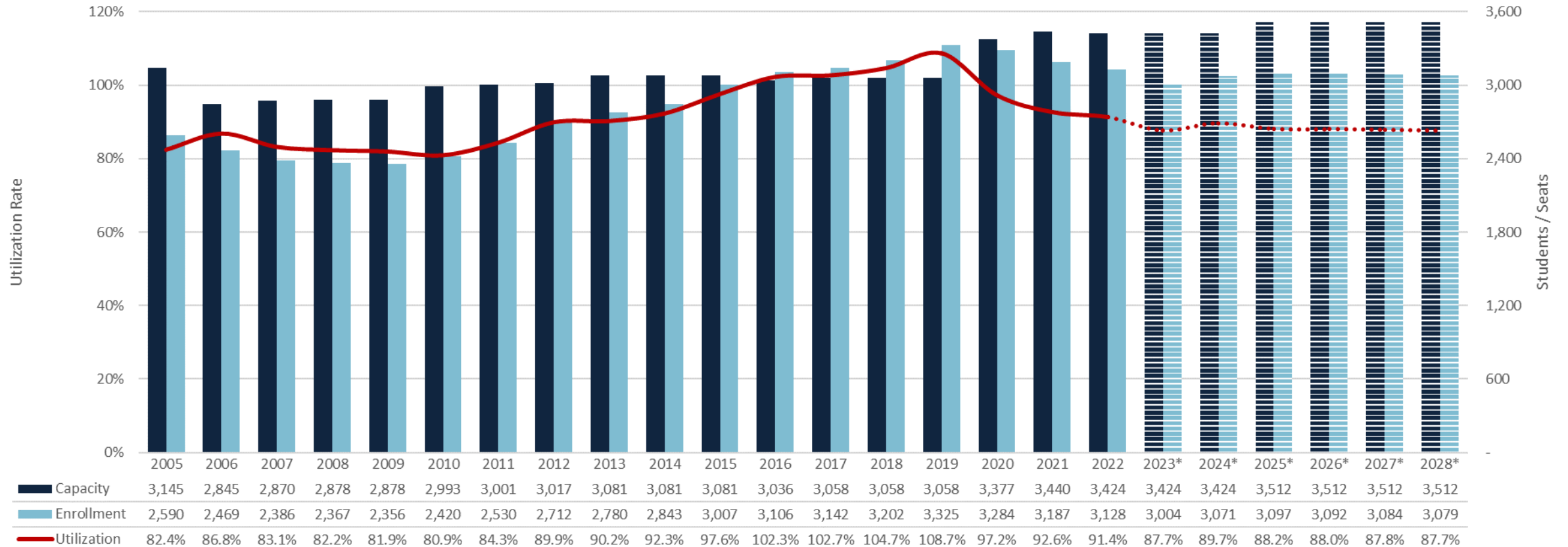
: analysis includes schools serving the Plan area and Blair cluster feeder schools

(Rolling Terrace ES, Takoma Park/Piney Branch ES, East Silver Spring ES, Montgomery Knolls/Pine Crest ES, New Hampshire Estates/Oak View ES)



# Middle School Utilization Trend/Projections of Plan Area

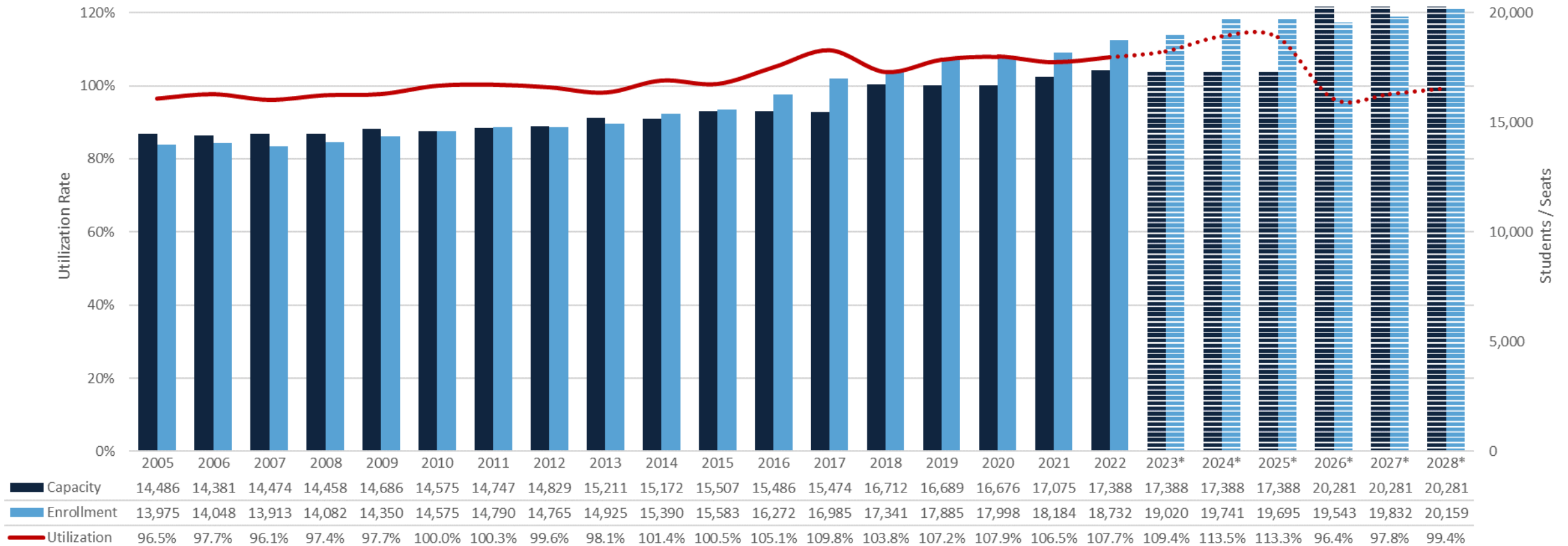
: analysis includes schools serving the Plan area and Blair cluster feeder schools  
 (Silver Spring International MS, Takoma Park MS, Eastern MS)





# High School Utilization Trend/Projections of Plan Area

: analysis includes all schools considered in the Board of Education’s approved Woodward HS Reopening Boundary Scope<sup>1</sup> (Blair HS, Einstein HS, Kennedy HS, Northwood HS, Wheaton HS, Bethesda-Chevy Chase HS, and Whitman HS)



<sup>1</sup> Several high school projects were approved to address the urgent space needs at the Downcounty Consortium high schools and Walter Johnson High School, including an addition at Kennedy HS, addition and facility upgrades to Northwood HS, and the reopening of Charles W. Woodward HS. On March 28, 2023, the Board of Education approved the boundary study scope to create the service area for the reopening of Charles W. Woodward High School. The scope of the boundary study includes Bethesda-Chevy Chase, Montgomery Blair, Albert Einstein, Walter Johnson, John F. Kennedy, Northwood, Wheaton, and Walt Whitman high schools.



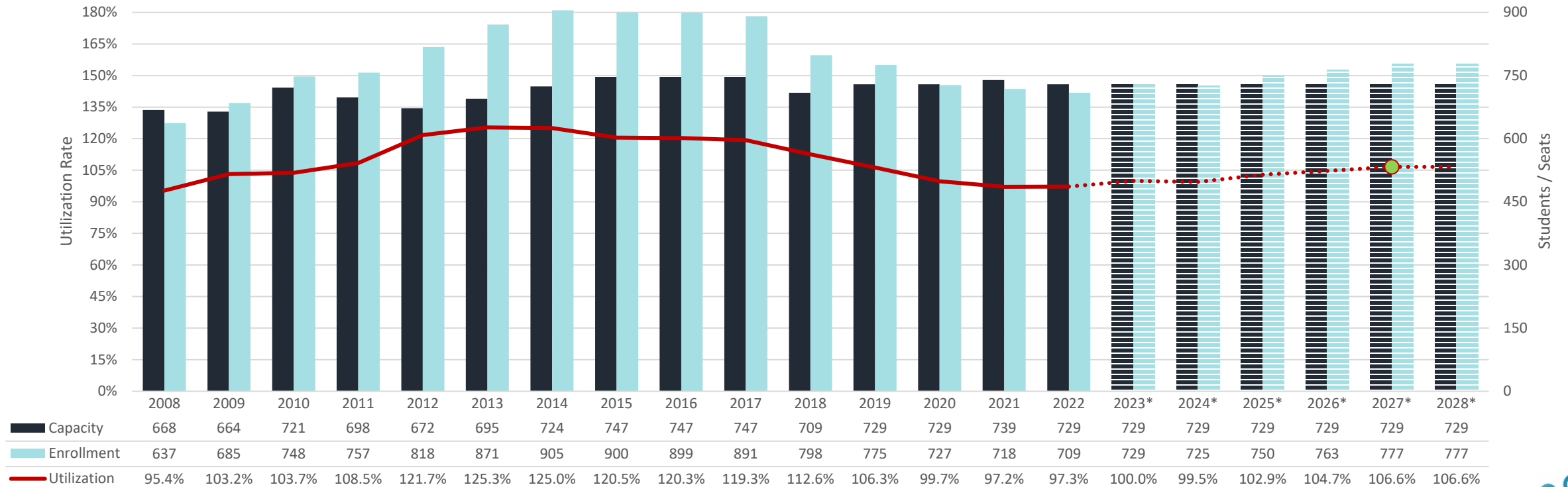
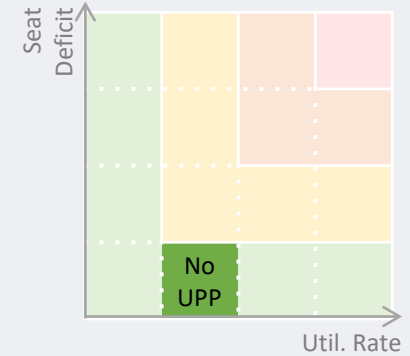
# Rolling Terrace Elementary School

## FY24 Annual School Test

**Year Facility Built:** 1950  
**Last Renovation:** 1989  
**Gross Floor Area:** 92,241 sq.ft.  
**Site Size:** 4.3 acres  
**Relocatables in 2022:** 6

**Adjacent Schools**  
 East Silver Spring ES  
 Montgomery Knolls/Pine Crest ES  
 New Hampshire Est/Oak View ES  
 Sligo Creek ES  
 Takoma Park/Piney Branch ES

- 4-Yr Projection
  - Utilization : 106.6%
  - Seat Deficit :-48



\* MCPS projection, modified according to Annual School Test guidelines (if applicable).



# Takoma Park/Piney Branch ES

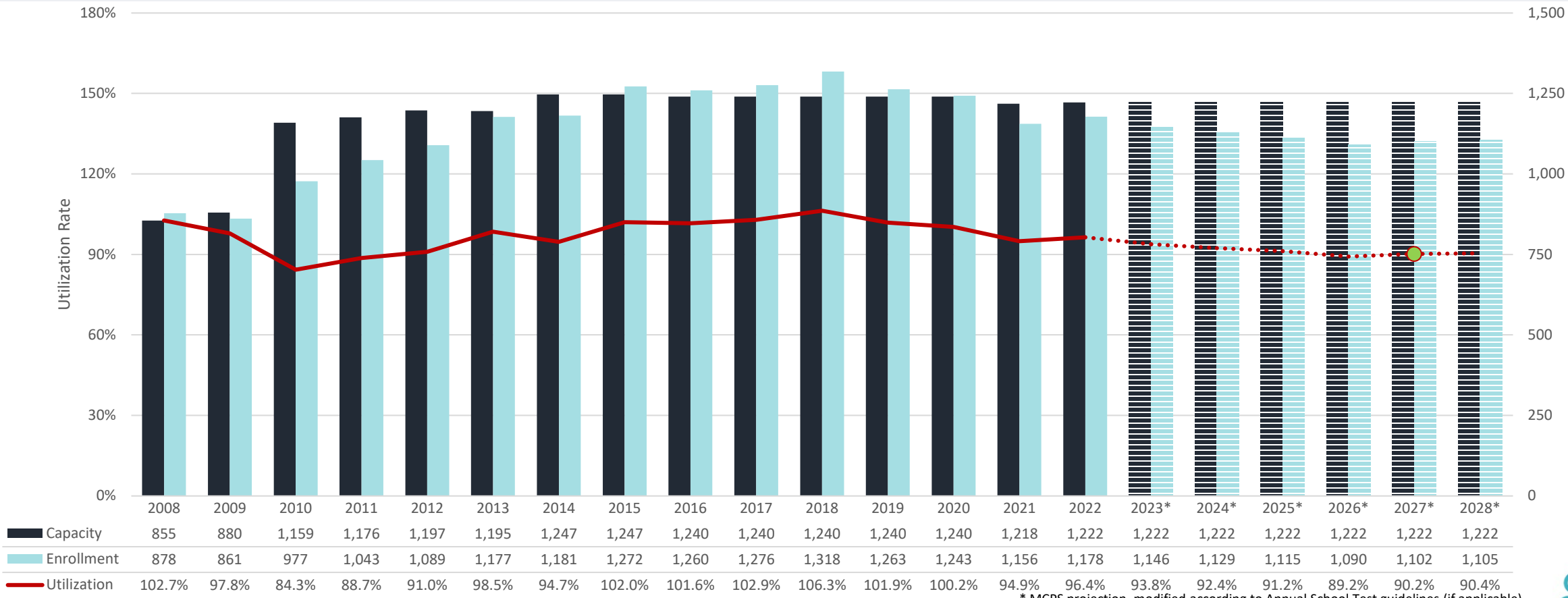
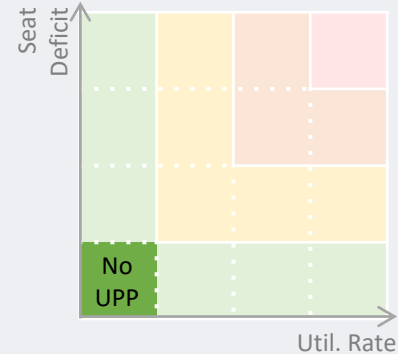
## FY24 Annual School Test

	<u>Takoma Park</u>	<u>Piney Branch</u>
Year Facility Built:	1979	/ 1973
Last Renovation:	- (2010 add'n)	/ -
GSF:	85,553 sq.ft.	/ 99,706 sq.ft.
Site Size:	4.7 acres	/ 1.9 acres
Relocatables in 2022:	-	/ -

**Adjacent Schools**

East Silver Spring ES  
 New Hampshire Estates/Oak View ES  
 Rolling Terrace ES

- 4-Yr Projection
  - Utilization : 90.2%
  - Seat Surplus : 120



\* MCPS projection, modified according to Annual School Test guidelines (if applicable).

