

EXISTING (NO-BUILD) CONDITIONS

SHA

STATE OF MARYLAND
DEPARTMENT OF TRANSPORTATION
STATE HIGHWAY ADMINISTRATION
OFFICE OF TRAFFIC & SAFETY
TRAFFIC ENGINEERING DESIGN DIVISION
MD 410 / MD 195
INTERSECTION IMPROVEMENTS

OPTION 1

| | | | | |
|--------------|--------------|-----------------|--------------|--------------|
| SCALE | N.T.S. | DATE | CONTRACT NO. | CONTRACT NO. |
| DESIGNED BY | A. DAS | COUNTY | MONTGOMERY | |
| DRAWN BY | M. STUTHMANN | LOGMILE | | |
| CHECKED BY | J. GOODE | T. J. M. S. NO. | | |
| F. A. P. NO. | NA | TOD NO. | | |
| DRAWING NO. | SG-01 OF 08 | SHEET NO. | | OF |

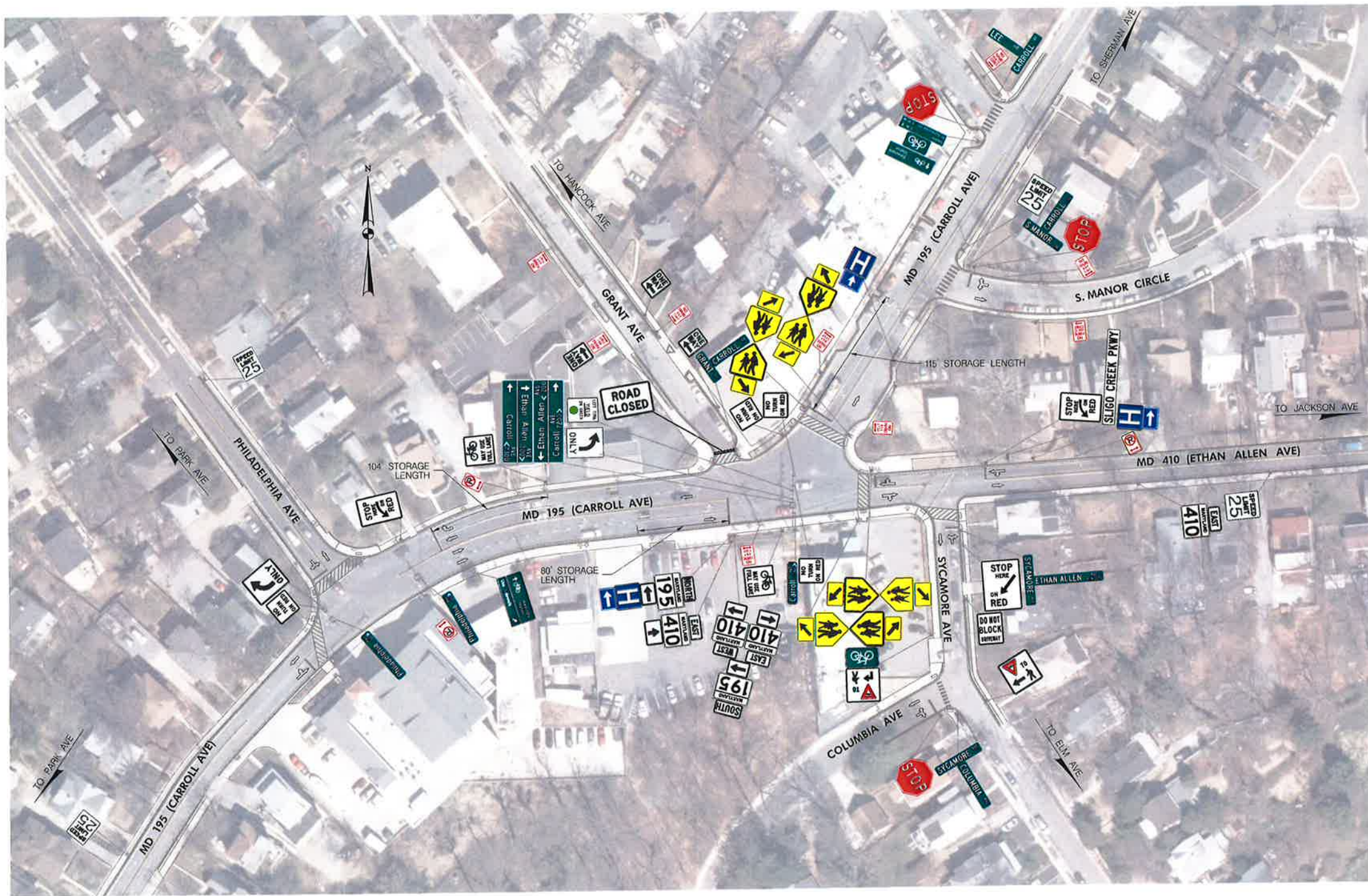
PLOTTED: TUESDAY, JUNE 23, 2015 AT 10:29 AM
FILE: X:\BALTIMORE\111-146.012 - MD 410-MD 195 INTERSECTION STUDY\05-CAD\WORKING FILES\PPM-C001-MD195.DGN

AMT

A. MORTON THOMAS AND ASSOCIATES, INC.
CONSULTING ENGINEERS
800 KING FARM BLVD. 4TH FLOOR
ROCKVILLE, MARYLAND 20850
PH: (301) 881-2545 FAX: (301) 881-0814
WWW.AMTENGINEERING.COM

| LEGEND | | | |
|--------|--|--|--------------------------|
| | EXISTING PAVEMENT MARKING LETTERS/ SYMBOLS | | RELOCATE EXISTING SIGN |
| | EXISTING TRAFFIC FLOW | | REMOVE EXISTING SIGN |
| | PROPOSED TRAFFIC FLOW | | PROPOSED SIGN |
| | EXISTING PAVEMENT TO BE REMOVED | | CONCRETE TRAFFIC BARRIER |
| | NEW FULL DEPTH PAVEMENT | | |
| | NEW SIDEWALK | | |

BY: NSTUTHMANN

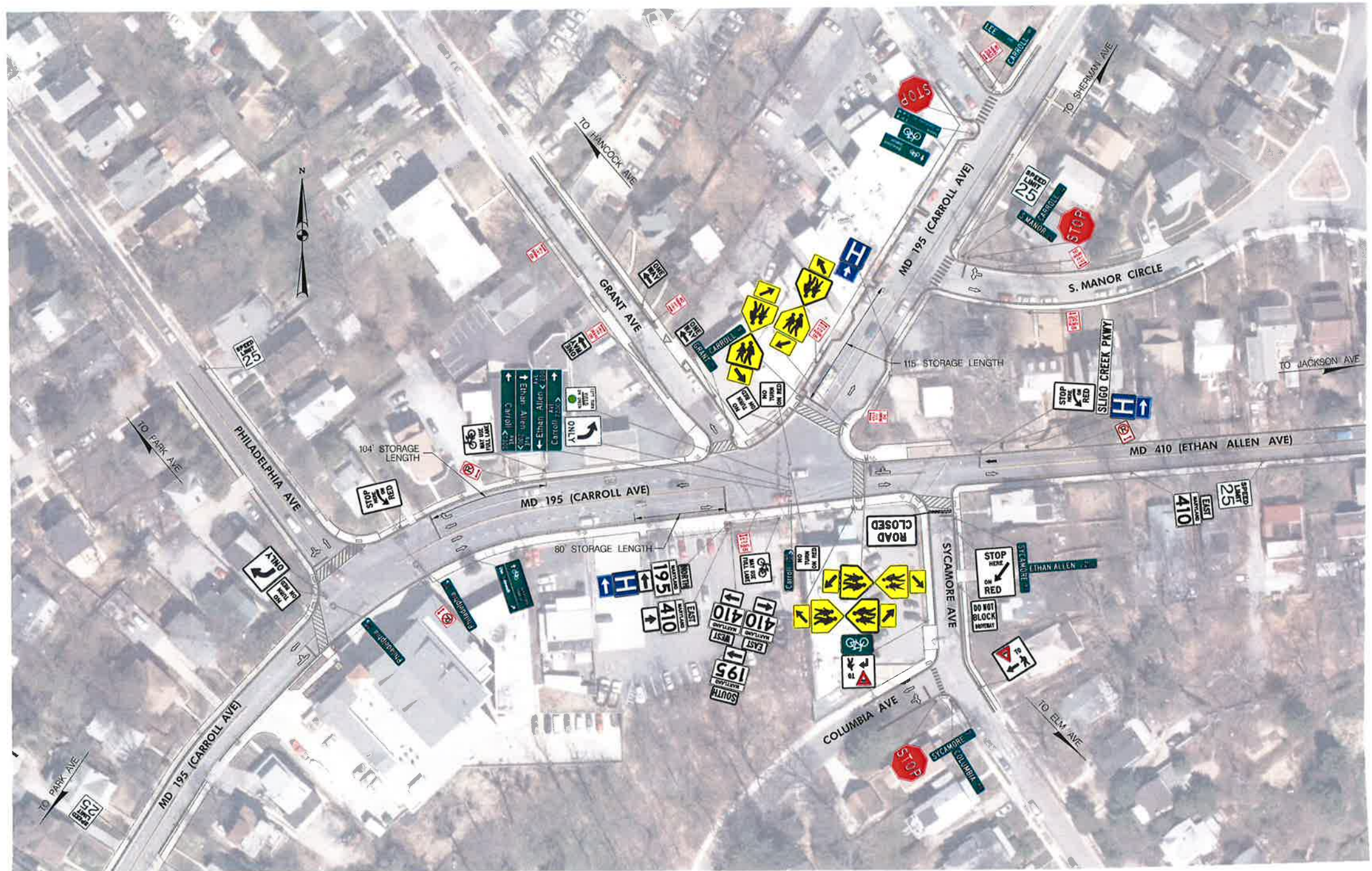


CLOSE GRANT AVENUE

| | | | |
|--|--|--|--|
| SHA | | STATE OF MARYLAND DEPARTMENT OF TRANSPORTATION STATE HIGHWAY ADMINISTRATION OFFICE OF TRAFFIC & SAFETY TRAFFIC ENGINEERING DESIGN DIVISION MD 410 / MD 195 INTERSECTION IMPROVEMENTS | |
| OPTION 2 | | | |
| SCALE <u> N.T.S. </u> DATE <u> </u> | | CONTRACT NO. <u> CONTRACT NO. </u> | |
| DESIGNED BY <u> A. DAS </u> | | COUNTY <u> MONTGOMERY </u> | |
| DRAWN BY <u> M. STUTHMANN </u> | | LOGMILE <u> </u> | |
| CHECKED BY <u> J. GOODE </u> | | T. I. M. S. NO. <u> </u> | |
| F. A. P. NO. <u> NA </u> | | TOD NO. <u> </u> | |
| DRAWING NO. <u> </u> | | SHEET NO. <u> OF </u> | |

AMT
A. MORTON THOMAS AND ASSOCIATES, INC.
CONSULTING ENGINEERS
800 KING FARM BLVD. 4TH FLOOR
ROCKVILLE, MARYLAND 20850
PH: (301) 881-2545 FAX: (301) 881-0814
WWW.AMTENGINEERING.COM

- LEGEND**
- | | | | |
|--|--|--|--------------------------|
| | EXISTING PAVEMENT MARKING LETTERS/ SYMBOLS | | RELOCATE EXISTING SIGN |
| | EXISTING TRAFFIC FLOW | | REMOVE EXISTING SIGN |
| | PROPOSED TRAFFIC FLOW | | PROPOSED SIGN |
| | EXISTING PAVEMENT TO BE REMOVED | | CONCRETE TRAFFIC BARRIER |
| | NEW FULL DEPTH PAVEMENT | | |
| | NEW SIDEWALK | | |



CLOSE SYCAMORE AVENUE



STATE OF MARYLAND
DEPARTMENT OF TRANSPORTATION
STATE HIGHWAY ADMINISTRATION
OFFICE OF TRAFFIC & SAFETY
TRAFFIC ENGINEERING DESIGN DIVISION
MD 410 /MD 195
INTERSECTION IMPROVEMENTS

OPTION 3

SCALE N.T.S. DATE CONTRACT NO. <CONTRACT NO.>

DESIGNED BY A. DAS COUNTY MONTGOMERY
DRAWN BY M. STUTHMANN LOGMILE
CHECKED BY J. GOODE T. I. M. S. NO.
F. A. P. NO. TOD NO.

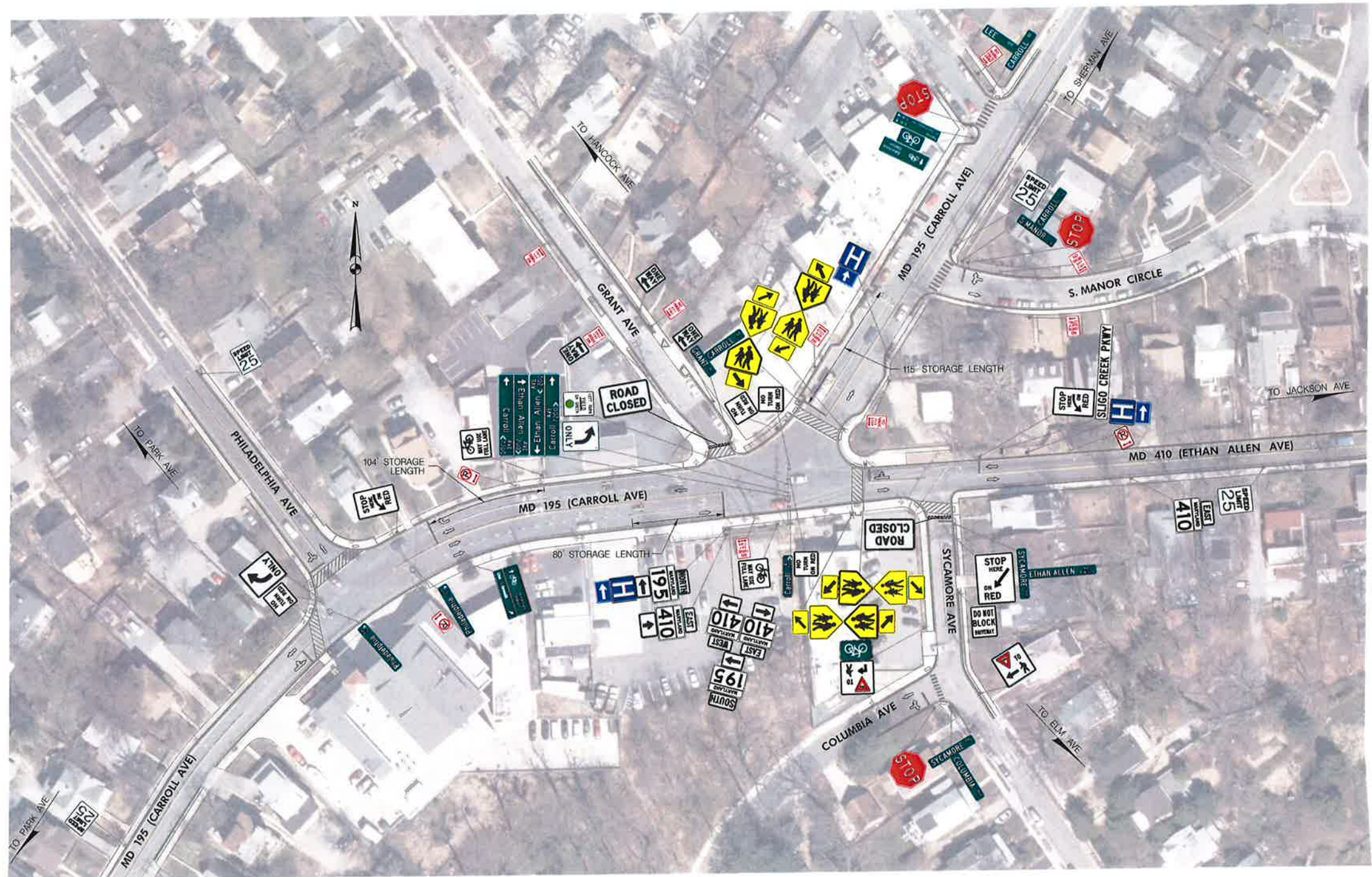
DRAWING NO. - SG-03 OF 08 SHEET NO. OF

PLOTTED: TUESDAY, JUNE 23, 2015 AT 12:10 PM
FILE: X:\BALTIMORE\111-146.012 - MD 410-MD 195 INTERSECTION STUDY\05-CAD\WORKING FILES\PPM-P003.MDI\95.DGN

AMT
A. MORTON THOMAS AND ASSOCIATES, INC.
CONSULTING ENGINEERS
800 KING FARM BLVD, 4TH FLOOR
ROCKVILLE, MARYLAND 20850
PH: (301) 881-2545 FAX: (301) 881-0814
WWW.AMTENGINEERING.COM

| LEGEND | | | |
|--------|--|--|--------------------------|
| | EXISTING PAVEMENT MARKING LETTERS/ SYMBOLS | | RELOCATE EXISTING SIGN |
| | EXISTING TRAFFIC FLOW | | REMOVE EXISTING SIGN |
| | PROPOSED TRAFFIC FLOW | | PROPOSED SIGN |
| | EXISTING PAVEMENT TO BE REMOVED | | CONCRETE TRAFFIC BARRIER |
| | NEW FULL DEPTH PAVEMENT | | |
| | NEW SIDEWALK | | |

BY: M. STUTHMANN



CLOSE GRANT AVENUE AND SYCAMORE AVENUE



STATE OF MARYLAND
DEPARTMENT OF TRANSPORTATION
STATE HIGHWAY ADMINISTRATION
OFFICE OF TRAFFIC & SAFETY
TRAFFIC ENGINEERING DESIGN DIVISION
MD 410 /MD 195
INTERSECTION IMPROVEMENTS

OPTION 4

SCALE N.T.S. DATE CONTRACT NO. <CONTRACT NO.>

DESIGNED BY A. DAS COUNTY MONTGOMERY
DRAWN BY M. STUTHMANN LOGMILE
CHECKED BY J. GOODE T. I. M. S. NO.
F. A. P. NO. NA TOD NO.

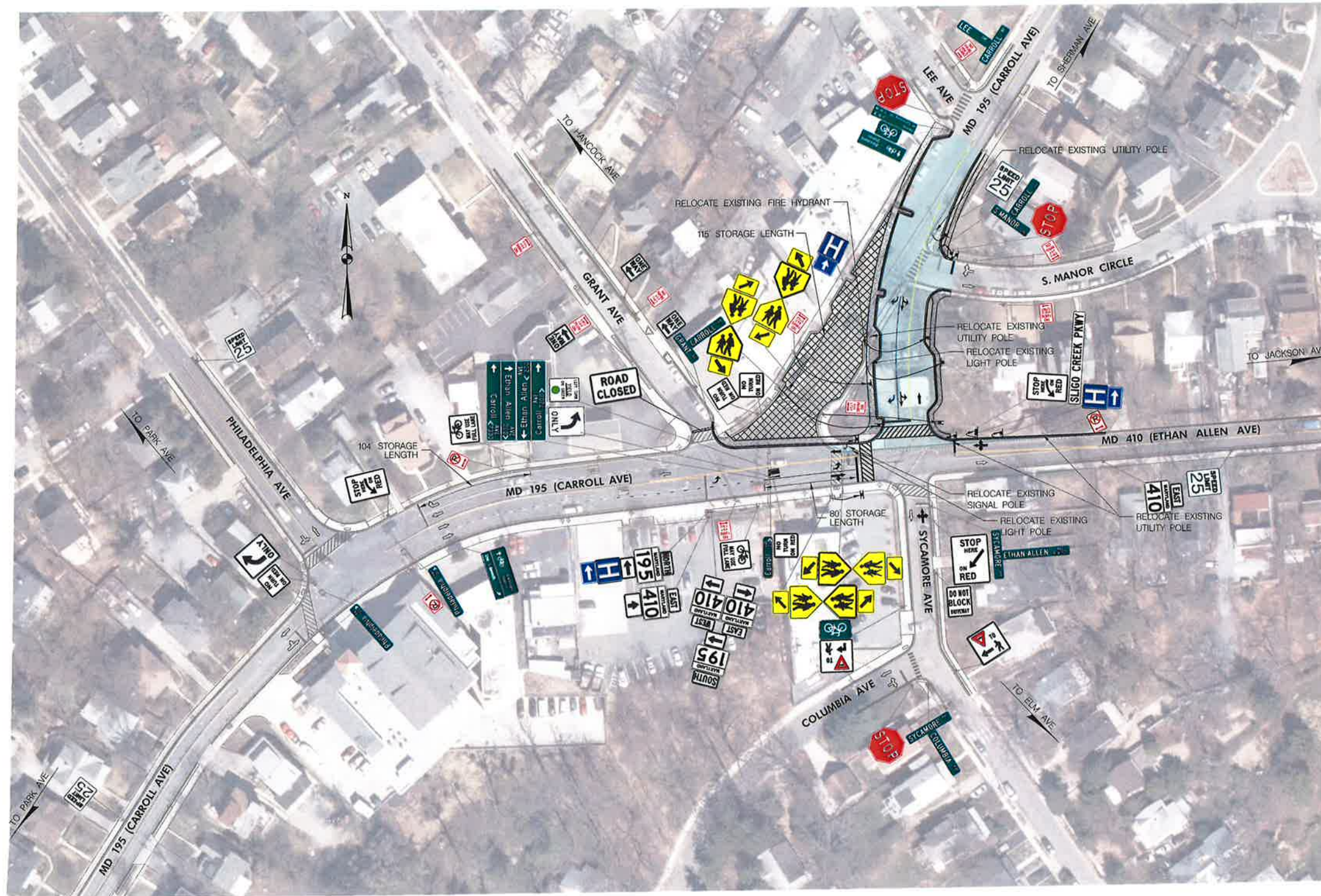
DRAWING NO. SG-04 OF 08 SHEET NO. OF



A. MORTON THOMAS AND ASSOCIATES, INC.
CONSULTING ENGINEERS
800 KING FARM BLVD. 4TH FLOOR
ROCKVILLE, MARYLAND 20850
PH: (301) 881-2545 FAX: (301) 881-0814
WWW.AMTENGINEERING.COM

| LEGEND | | | |
|--------|--|--|--------------------------|
| | EXISTING PAVEMENT MARKING LETTERS/ SYMBOLS | | RELOCATE EXISTING SIGN |
| | EXISTING TRAFFIC FLOW | | REMOVE EXISTING SIGN |
| | PROPOSED TRAFFIC FLOW | | PROPOSED SIGN |
| | EXISTING PAVEMENT TO BE REMOVED | | CONCRETE TRAFFIC BARRIER |
| | NEW FULL DEPTH PAVEMENT | | |
| | NEW SIDEWALK | | |

PLOTTED: TUESDAY, JUNE 23, 2015 AT 12:11 PM
FILE: X:\BALTIMORE\111-146.012 - MD 410-MD 195 INTERSECTION STUDY\95-CAD-WORKING FILES\PPM-P004.MD195.DGN



REALIGN MD 195 AND CLOSE GRANT AVENUE

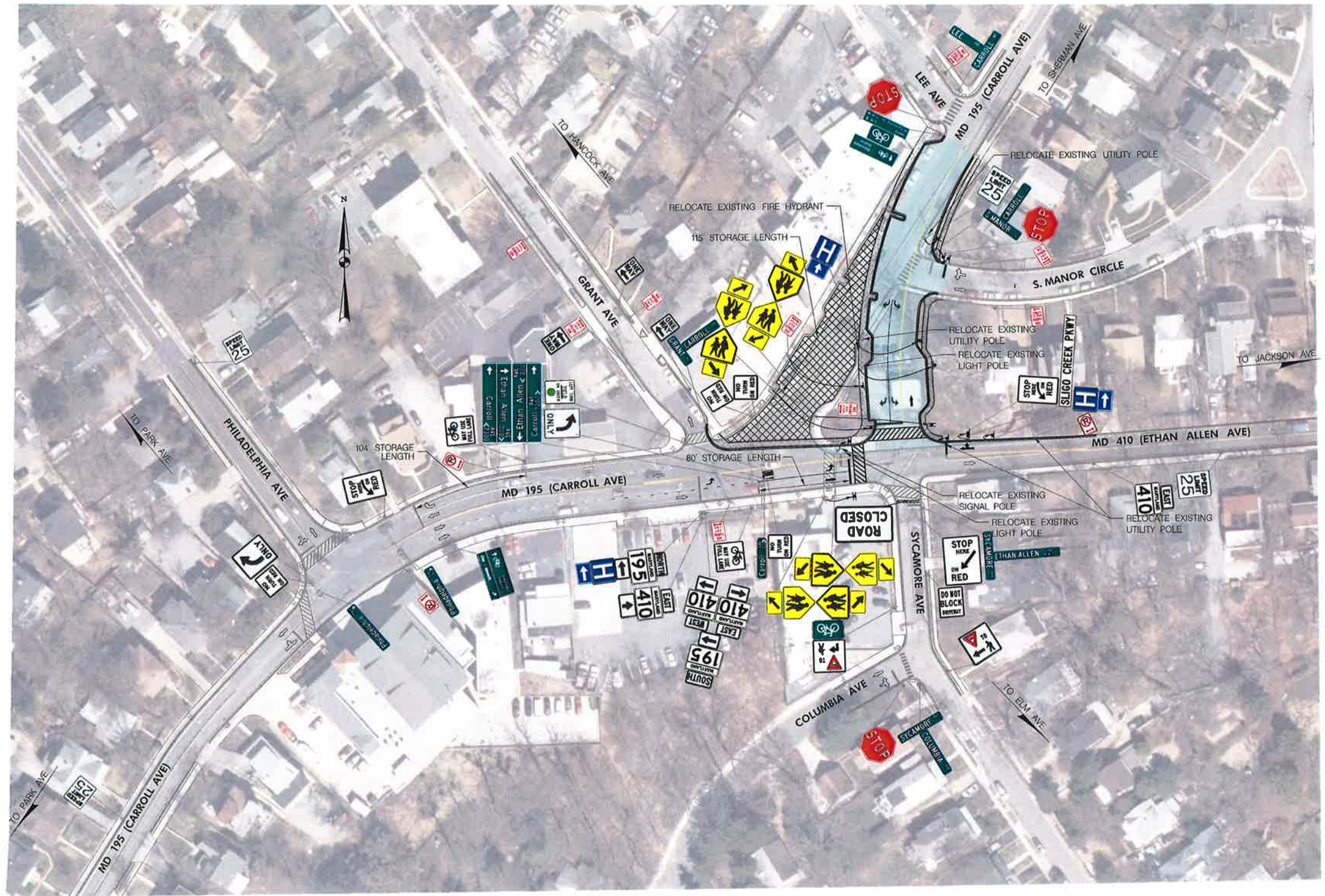
| | |
|---|--|
| SHA STATE OF MARYLAND DEPARTMENT OF TRANSPORTATION STATE HIGHWAY ADMINISTRATION OFFICE OF TRAFFIC & SAFETY TRAFFIC ENGINEERING DESIGN DIVISION MD 410 /MD 195 INTERSECTION IMPROVEMENTS | |
| | |
| OPTION 6 | |
| SCALE <u>N.T.S.</u> DATE <u> </u> | CONTRACT NO. <u><CONTRACT NO.></u> |
| DESIGNED BY <u>A. DAS</u> | COUNTY <u>MONTGOMERY</u> |
| DRAWN BY <u>M. STUTHMANN</u> | LOGMILE <u> </u> |
| CHECKED BY <u>J. GOODE</u> | T. I. M. S. NO. <u> </u> |
| F.A.P. NO. <u>NA</u> | TOD NO. <u> </u> |
| DRAWING NO. <u>SG-06 OF 08</u> | SHEET NO. <u> </u> OF <u> </u> |

AMT
 A. MORTON THOMAS AND ASSOCIATES, INC.
 CONSULTING ENGINEERS
 800 KING FARM BLVD, 4TH FLOOR
 ROCKVILLE, MARYLAND 20850
 PH: (301) 881-2545 FAX: (301) 881-0814
 WWW.AMTENGINEERING.COM

| LEGEND | | | |
|--------|--|--|--------------------------|
| | EXISTING PAVEMENT MARKING LETTERS/ SYMBOLS | | RELOCATE EXISTING SIGN |
| | EXISTING TRAFFIC FLOW | | REMOVE EXISTING SIGN |
| | PROPOSED TRAFFIC FLOW | | PROPOSED SIGN |
| | EXISTING PAVEMENT TO BE REMOVED | | CONCRETE TRAFFIC BARRIER |
| | NEW FULL DEPTH PAVEMENT | | |
| | NEW SIDEWALK | | |

PLOTTED: TUESDAY, JUNE 23, 2015 AT 00:51 PM
 FILE: X:\BALTIMORE\111-146.012 - MD 410-MD 195 INTERSECTION STUDY\05-CAD\WORKING FILES\PPM-P006-MD195.DGN

BY: M. STUTHMANN



REALIGN MD 195 AND CLOSE SYCAMORE AVENUE



STATE OF MARYLAND
DEPARTMENT OF TRANSPORTATION
STATE HIGHWAY ADMINISTRATION
OFFICE OF TRAFFIC & SAFETY
TRAFFIC ENGINEERING DESIGN DIVISION
MD 410 /MD 195
INTERSECTION IMPROVEMENTS

OPTION 7

SCALE N.T.S. DATE CONTRACT NO. <CONTRACT NO>

DESIGNED BY A. DAS COUNTY MONTGOMERY
DRAWN BY M. STUTHMANN LOGMILE
CHECKED BY J. GOODE T. J. M. S. NO.
F. A. P. NO. NA TOD NO.

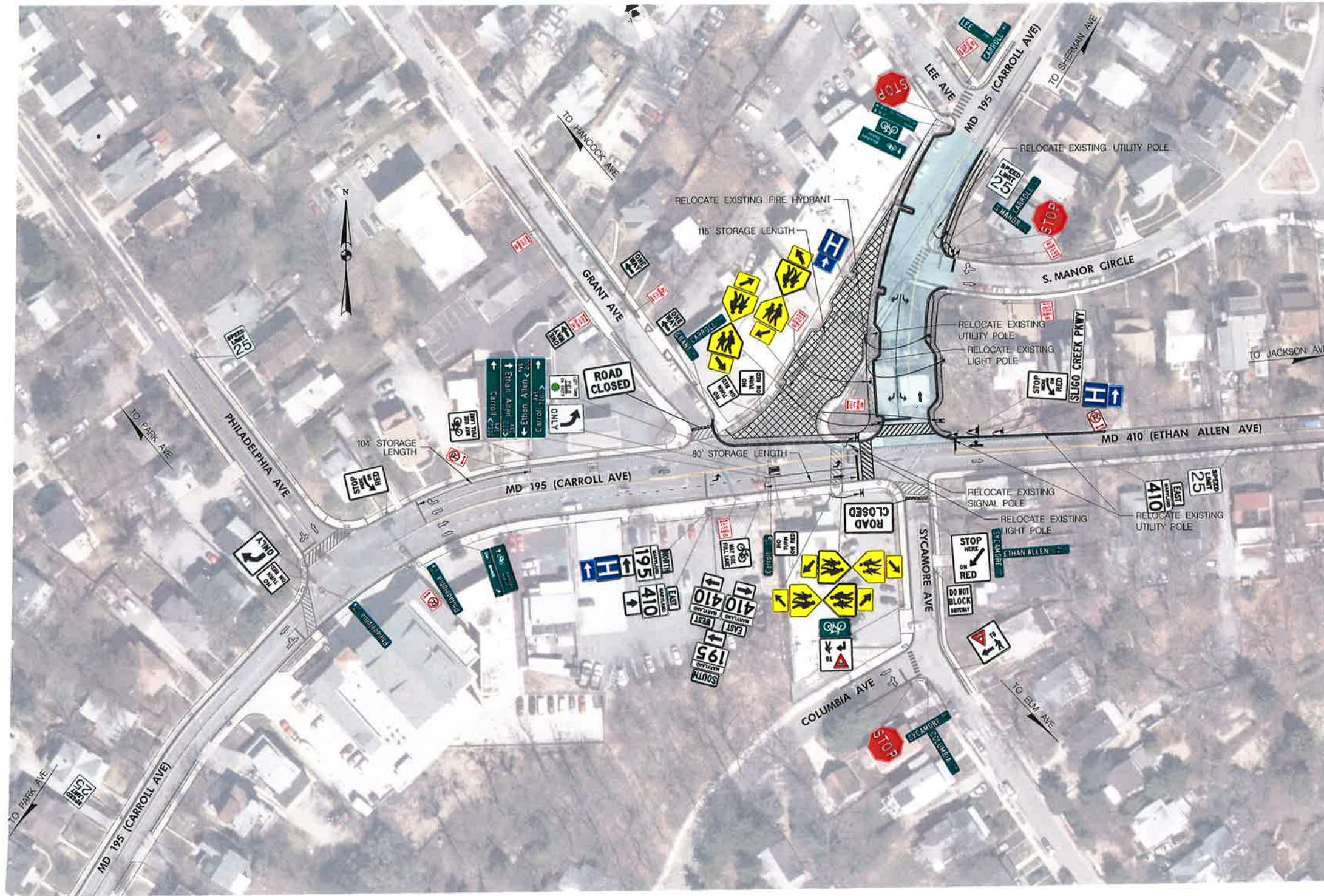
DRAWING NO. - SG-07 OF 08 SHEET NO. OF

PLOTTED: TUESDAY, JUNE 23, 2015 AT 02:01 PM
FILE: X:\BALTIMORE\111-146.012 - MD 410-MD 195 INTERSECTION STUDY\85-CAD\WORKING FILES\APP-P007-MD195.DGN

AMT
A. MORTON THOMAS AND ASSOCIATES, INC.
CONSULTING ENGINEERS
800 KING FARM BLVD, 4TH FLOOR
ROCKVILLE, MARYLAND 20850
PH: (301) 881-2545 FAX: (301) 881-0814
WWW.AMTENGINEERING.COM

| LEGEND | |
|--------|------------------------------------|
| | EXISTING PAVEMENT MARKING LETTERS/ |
| | EXISTING TRAFFIC FLOW |
| | PROPOSED TRAFFIC FLOW |
| | EXISTING PAVEMENT TO BE REMOVED |
| | NEW FULL DEPTH PAVEMENT |
| | NEW SIDEWALK |
| | RELOCATE EXISTING SIGN |
| | REMOVE EXISTING SIGN |
| | PROPOSED SIGN |
| | CONCRETE TRAFFIC BARRIER |

BY: MSTUTHMANN



REALIGN MD 195 AND
CLOSE GRANT AVENUE AND SYCAMORE AVENUE

SHA STATE OF MARYLAND
DEPARTMENT OF TRANSPORTATION
STATE HIGHWAY ADMINISTRATION
OFFICE OF TRAFFIC & SAFETY
TRAFFIC ENGINEERING DESIGN DIVISION
MD 410 / MD 195
INTERSECTION IMPROVEMENTS

OPTION 8

| | | |
|--------------------------------|--------------------------------|----------------------------------|
| SCALE <u>N.T.S.</u> | DATE <u> </u> | CONTRACT NO. <u>CONTRACT NO.</u> |
| DESIGNED BY <u>A. DAS</u> | COUNTY <u>MONTGOMERY</u> | |
| DRAWN BY <u>M. STUTHMANN</u> | LOGMILE <u> </u> | |
| CHECKED BY <u>J. GOODE</u> | T.I.M.S. NO. <u> </u> | |
| F.A.P. NO. <u>NA</u> | TOD NO. <u> </u> | |
| DRAWING NO. <u>SG-08 OF 08</u> | SHEET NO. <u>08</u> | OF <u>08</u> |

PLOTTED: TUESDAY, JUNE 23, 2015 AT 02:03 PM
FILE: X:\BALTIMORE\111-145\012 - MD 410-MD 195 INTERSECTION STUDY\05-CAD\WORKING FILES\PPM-P808.MD\95.DGN

AMT
A. MORTON THOMAS AND ASSOCIATES, INC.
CONSULTING ENGINEERS
800 KING FARM BLVD. 4TH FLOOR
ROCKVILLE, MARYLAND 20850
PH: (301) 881-2545 FAX: (301) 881-0814
WWW.AMTENGINEERING.COM

- LEGEND**
- | | | | |
|--|-----------------------------------|--|--------------------------|
| | EXISTING PAVEMENT MARKING LETTERS | | RELOCATE EXISTING SIGN |
| | EXISTING TRAFFIC FLOW | | REMOVE EXISTING SIGN |
| | PROPOSED TRAFFIC FLOW | | PROPOSED SIGN |
| | EXISTING PAVEMENT TO BE REMOVED | | CONCRETE TRAFFIC BARRIER |
| | NEW FULL DEPTH PAVEMENT | | |
| | NEW SIDEWALK | | |

BY: M. STUTHMANN