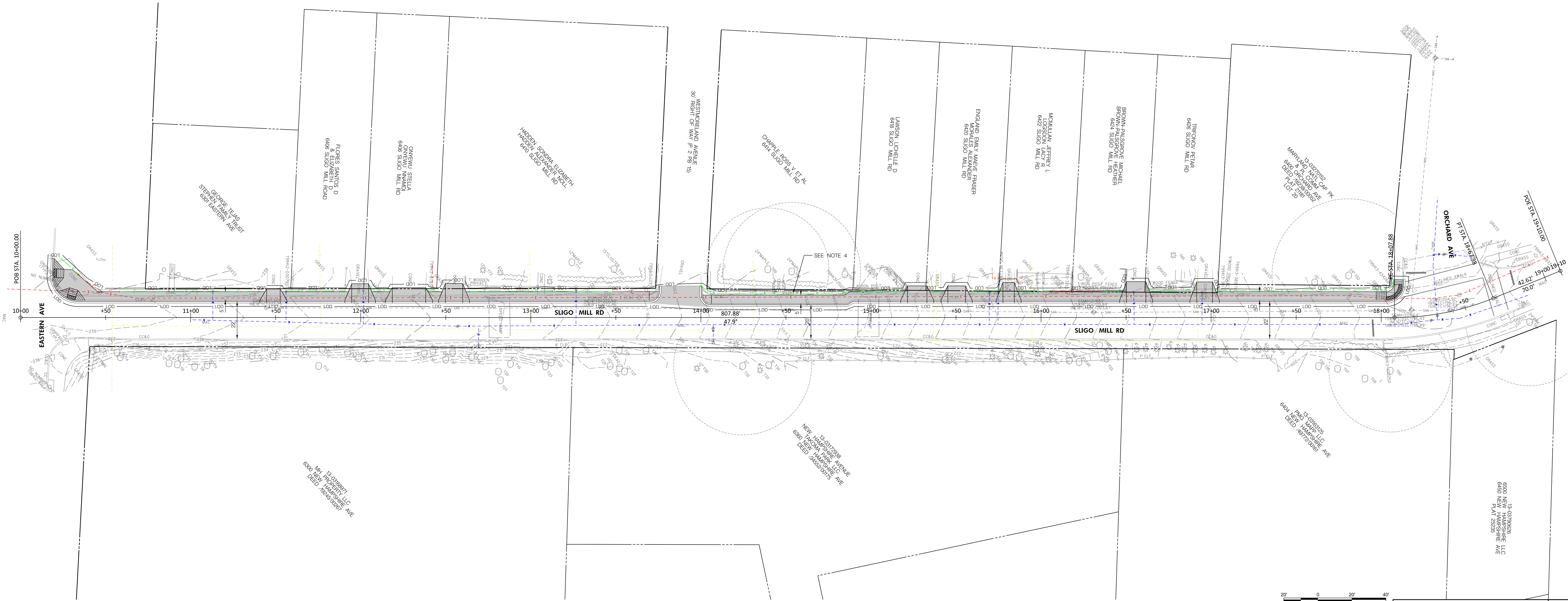
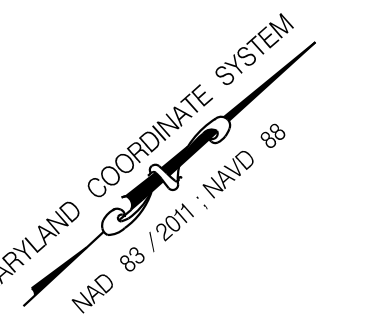


- NOTES:
- SEE CONCEPT PLAN SHEET 2 FOR TREE REMOVAL TABLE, RECOMMENDED TREE PROTECTION, AND DETAILS.
 - ROOT PRUNE ALONG LOD OR EDGE OF EXCAVATION WHERE LOD HAS POTENTIAL TO IMPACT TREE ROOTS AS DIRECTED BY MARYLAND LICENSE TREE EXPERT.
 - TREES T-62 AND T-83 ARE IN FAIR CONDITION AND MAY BE IMPACTED BY EXCAVATION REQUIRED TO INSTALL THE SIDEWALK.
 - MATERIAL FOR 2' BUFFER SPACE SHALL BE CONFIRMED BY THE CITY OF TAKOMA PARK DURING CONSTRUCTION.



LEGEND:

	PROPOSED CONCRETE SIDEWALK
	TREE TO BE REMOVED
	EXISTING TREE & TREE NUMBER
	CRITICAL ROOT ZONE

RK&K
Rummel, Klepper & Kahl, LLP
 700 EAST PRATT STREET | BALTIMORE, MD 21202
 SUITE 500 PH: (410) 728-2900
 Engineers | Construction Managers | Planners | Scientists
 www.rkk.com

DESIGN BY: AMA
DRAWN BY: AMA
CHECK BY: RJG

DEPARTMENT OF PUBLIC WORKS
CITY OF TAKOMA PARK
 31 OSWEGO AVENUE
 TAKOMA PARK, MD 20910

CONCEPT PLAN ALTERNATIVE 1 HD-01

**SLIGO MILL ROAD
 SIDEWALK IMPROVEMENTS**
 EASTERN AVENUE TO ORCHARD AVENUE

DATE: SEPTEMBER 2022 CONTRACT NO. _____
 SCALE: 1" = 20' SHEET 01 OF 02

I:\projects\2022\09\01\Projects\020\2022\09\01\Task 6_Sligo Mill Rd_Sidewalk\020\09\01\Task 6_Sligo Mill Rd_Sidewalk\020\09\01\Task 6_Sligo Mill Rd_Sidewalk.dwg
 8/24/2022