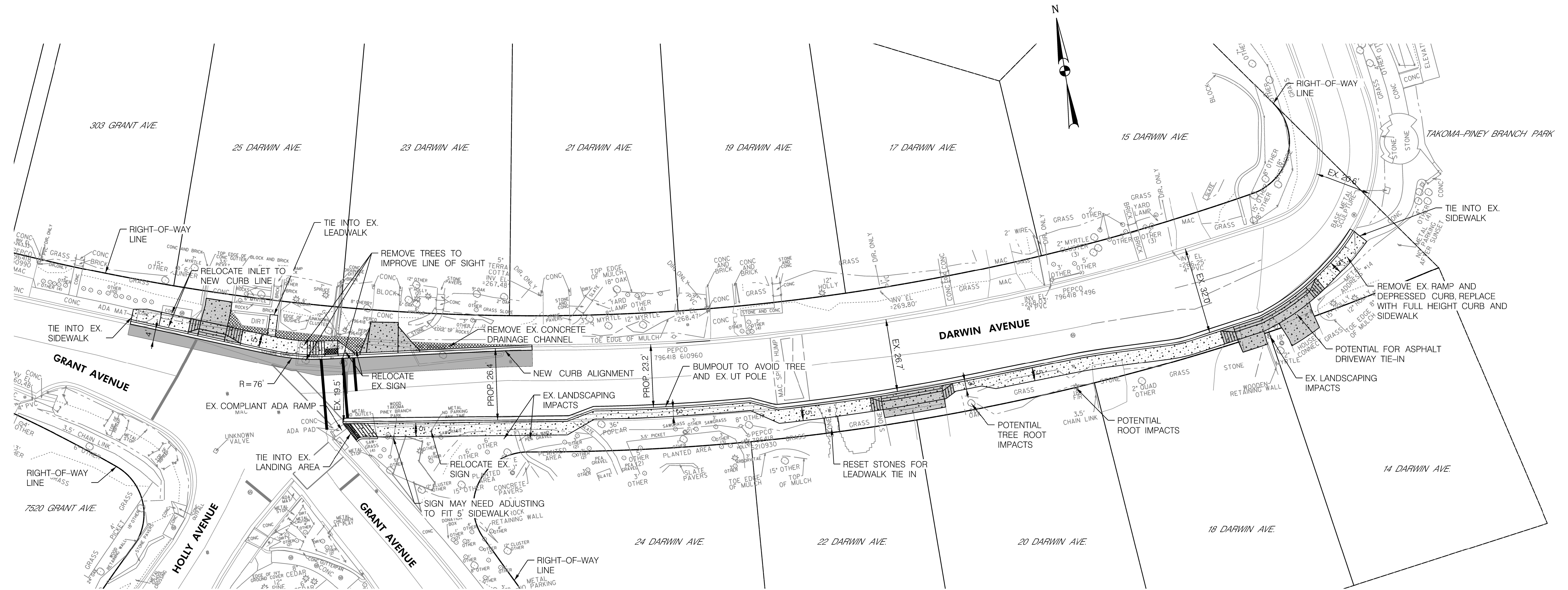


SIDEWALK IMPROVEMENTS ALONG CHESTNUT AVE., HODGES LANE AND DARWIN AVE.
CONCEPT DESIGN – PREFERRED LAYOUT
AUGUST 2024



- CONCRETE DRIVEWAY
- CONCRETE SIDEWALK
- ASPHALT PAVEMENT
- DETECTABLE WARNING SURFACE
- REMOVAL OF EXISTING CONCRETE / ASPHALT

DESIGN NOTES

1. POSSIBLE TREE REMOVALS – 3
2. POSSIBLE TREE ROOT IMPACTS – 2
3. POSSIBLE PINCH POINTS – 2
4. BACK CURBS NOT ANTICIPATED ALONG DARWIN AVE.

 Whitman, Requardt & Associates, LLP <small>801 South Caroline Street, Baltimore, Maryland 21231</small>	CITY OF TAKOMA PARK
	31 OSWEGO AVENUE SILVER SPRING, MD 20910

