



WHAT'S NEW?

Trash and Recycling
Tuesday, Jan. 1 collection
moved to Jan. 2

Monday, Jan. 21
No yard waste collection

Public Hearing
Redistricting Plan
Monday, Jan. 14, 7:30 p.m.

TAKOMA PARK

A newsletter published by the City of Takoma Park, Maryland

Volume 52, No. 1 ■ takomaparkmd.gov



100 FACES

Artist Carollyn James's representation of Takoma Park's rich diversity will be celebrated on Jan. 26 from 3:30 to 5:30 p.m., at the Takoma Park Community Center. See page 9.



City contemplates redistricting among wards

Changes required after census shows population shifts

When it comes to City districts, the 2010 census runs the show.

The census report shows a redistribution of Takoma Park's population, with comparatively larger numbers in Ward 3 and smaller numbers in Wards 5 and 6. As a general rule, there should be no more than a 10 percent difference between the largest and smallest ward population, so City Council has kicked into motion to redraw the boundaries. A task force convened in January 2012, and presented three options for consideration. City Council came up with a fourth, which will be presented at a public hearing on Jan. 14.

The basics

The City is divided into wards for purposes of City elections. After each decennial census, the City of Takoma Park reviews the population data to determine whether the wards are substantially similar in population. The goal: to ensure one person, one vote. The overall variance between the smallest ward and the largest ward should be no more than 10 percent.

Additionally, City Code requires that, "Each ward shall be compact in form and composed of adjoining territory. The populations of the wards shall be substantially equal."

The City Charter grants the City Council the power to redraw the ward boundaries, but requires that the number of wards be consistent with the Charter, that they be as nearly equal in population as is practical and apportioned consistently with the principle of one person/one vote, that they be geographically contiguous, that their boundaries recognize natural boundaries (within practical limits), and that gerrymandering, to ensure the election or defeat of any incumbent candidate or potential candidate, not be tolerated.

The 2010 Census (conducted on April 1,

Purple Line Depends on Action this Year

By Suzanne Ludlow
Acting City Manager

The City of Takoma Park has announced that passing legislation to fund the Purple Line transit plan is its top priority this legislative session, which begins this month.

Takoma Park has supported the Purple Line since 2000, when the idea of an east-west light rail transit line was first seriously considered. This line would connect Bethesda, Silver Spring, College Park and New Carrollton, as well as the two branches of the Red Line, the Green Line,

the Orange Line, the MARC train system and major bus transit stations. Stations at Piney Branch and Arliss, and University and New Hampshire would serve Takoma Park.

Land use plans along University Boulevard, New Hampshire Avenue and in the Long Branch area are based on the coming of the Purple Line. These plans emphasize walkable, bike-friendly streets adjacent to existing neighborhoods and new mixed-use developments with housing, shops, restaurants and services.

PURPLE LINE ☐ Page 3

REDISTRICTING ☐ Page 6

Transportation funding among City's top issues for legislative session

By Michele Douglas
Public Policy Partners

As the Maryland General Assembly convenes on Jan. 9 for its 90-day session, there are a number of budget and legislative issues of interest to the City of Takoma Park.

Setting aside the fiscal cliff negotiations

for the moment, with the hope that by the time this reaches you a deal has been struck, the state's economic picture looks better than it has in years. Rather than considering a cut of more than \$1 billion from the budget as the state has in years past, this year Maryland hopes to fully close the lingering deficit by making final reductions of about \$400 million from the

budget.

Among the many issues that will be debated during the 90-day session, wind energy off of the Eastern Shore, repeal of the death penalty, and transportation funding are expected to be key. Transportation funding, including funding for the Purple Line (see related story) and

LEGISLATIVE SESSION ☐ Page 3

Inside:

DRUMMING
Page 9



SNOW PLOWS
Page 11



INAUGURAL FILM
Page 12

DOCKET

TAKOMA TOPICS:

“ This new video from Montgomery County, Md., Planning Department gives a pretty good overview of the ongoing Zoning Rewrite project, with a focus on Takoma Park. <http://vimeo.com/54887186> ”

— www.facebook.com/TakomaParkMD

City Council & Committee Calendar

OFFICIAL CITY GOVERNMENT MEETINGS*

TPCC: Takoma Park Community Center

CITY COUNCIL

Monday, Jan. 7, 7:30 p.m.
Monday, Jan. 14, 7:30 p.m.
Tuesday, Jan. 22, 7:30 p.m.
Monday, Jan. 28, 7:30 p.m.
TPCC Auditorium

CITY MANAGER SELECTION TASK FORCE

Wednesday, Jan. 9, 7:30 p.m.
TPCC Azalea Room

ARTS AND HUMANITIES COMMISSION

Tuesday, Jan. 22, 7 p.m.
TPCC Hydrangea Room

BOARD OF ELECTIONS

Wednesday, Jan. 9, 7:30 p.m.
Wednesday, Jan. 23, 7:30 p.m.
TPCC Council Conference Room

FACADE ADVISORY BOARD

Tuesday, Jan. 8, 6:30 p.m.
TPCC Hydrangea Room

RECREATION COMMITTEE

Thursday, Jan. 10, 7:30 p.m.
TPCC Hydrangea Room

TREE COMMISSION

Tuesday, Jan. 8, 6:30 p.m.
TPCC Lilac Room

*All meetings are open to the public unless noted otherwise. Additional meetings may be scheduled after the Takoma Park Newsletter deadline. For the most up to date information, check www.takomaparkmd.gov/committees/calendar. Most meetings are held in the Takoma Park Community Center – Sam Abbott Citizens' Center, 7500 Maple Ave. (TPCC). Individuals interested in receiving a weekly Council agenda and calendar update by e-mail should contact the City Clerk at 301-891-7267 or clerk@takomagov.org.

Notice on ADA Compliance

The City of Takoma Park is committed to ensuring that individuals with disabilities are able to fully participate in public meetings. Anyone planning to attend a City of Takoma Park public meeting or public hearing, and who wishes to receive auxiliary aids, services or accommodations is invited to contact the Acting City Manager at 301-891-7229 or suzannel@takomagov.org at least 48 hours in advance.

City Council Action

All actions take place in scheduled legislative meetings of the City Council. Only negative votes and abstentions/recusals are noted. Adopted legislation is available for review online at www.takomaparkmd.gov. For additional information, contact the City Clerk at jessiec@takomagov.org.

RESOLUTION 2012-64

Adopted (Dec. 3, 2012)
Setting forth the 2012 winter holiday recess
The resolution sets the City Council recess to begin Dec. 4, 2012 and extend through Jan. 6, 2013.

RESOLUTION 2012-65

Adopted (Dec. 3, 2012)
Providing for an appointment to the Facade Advisory Board
The resolution effects the appointment of Eric Sepler to the Facade Advisory Board.

RESOLUTION 2012-66

Adopted (Dec. 3, 2012)

Providing for an appointment to the Arts and Humanities Commission

The resolution effects the appointment of Joshua Speiser to the Arts and Humanities Commission.

RESOLUTION 2012-67

Adopted (Dec. 3, 2012)
Providing for appointments to the Personnel Appeal Board
The resolution effects the appointment of Meredith F. Burnett and the reappointment of Anand Parikh to the Personnel Appeal Board.

ORDINANCE 2012-55

Adopted (Dec. 3, 2012)
Authorizing execution of a contract for

development of a sustainability action plan and preparation of a greenhouse gas inventory

The ordinance authorizes execution of a contract with the Brendle Group for development of an environmental sustainability action plan and preparation of a greenhouse gas inventory for an amount not to exceed \$81,000.

ORDINANCE 2012-56

Adopted (Dec. 3, 2012)
Authorizing a contract with EduCare Support Services, Inc. for emergency food services
The ordinance authorizes execution of a contract for services in an amount not to exceed \$9,000 with EduCare Support Services, Inc. for provision of emergency food assistance to eligible Takoma Park residents.

NEW YEAR – NEW OPPORTUNITIES TO SERVE*

*Wards 4, 5, and 6 are especially invited to step up. Appointments are made by the City Council. Apply by completing an application form and submit it along with a resume or statement of qualifications. The application form is available online at www.takomaparkmd.gov/clerk/committees or by contacting the City Clerk (301-891-7267 or jessiec@takomagov.org).

ARTS AND HUMANITIES COMMISSION

(eight vacancies)
The Takoma Park Arts and Humanities Commission (AHC) serves in an official advisory role to the City Council on all matters related to the arts and humanities. The Commission promotes, coordinates and strengthens public programs to further cultural development of the City. The Arts and Humanities Commission consists of seven to 15 members appointed to three-year terms. At least 2/3 of the members must be Takoma Park residents. The AHC

meets the fourth Tuesday of the month at 7 p.m. For information, contact Sara Anne Daines: sarad@takomagov.org or 301-892-7224.

COMMISSION ON LANDLORD-TENANT AFFAIRS

(one vacancy – Takoma Park rental housing owner or manager desired)
The Commission on Landlord-Tenant Affairs (COLTA) adjudicates and mediates complaints for violations of Chapter 6.16, Landlord-Tenant Relations; rules on petitions for rent increases above the

rent stabilization allowance; and decides appeals from the City Manager's decision to deny, suspend or revoke a license under Chapter 6.08, Rental Housing Licenses and Commercial Occupancy Licenses. The Commission consists of seven to 12 members with a balance of landlords, renters, and homeowners. Members serve three-year terms. Residency required except that up to four members may be nonresidents if they own or manage rental housing in Takoma Park. COLTA holds one

SERVICE OPPORTUNITIES ☐ Page 3

CITY HALL BRIEFS

ADDITIONAL SMALL COMMUNITY GRANT FUNDING AVAILABLE

The City Council has established a Small Community Grant Program to work in partnership with the community to help achieve the goals established in the Strategic Plan. The Council allocated \$10,000 for the FY 2013 program. Of this, \$3,000 is still available for projects.

Applicants must show how the project or program directly benefits the Takoma Park community. The Council will consider a broad range of requests, but all grant proposals must describe how the project or program will address the Council's Strategic Plan.

Through this program, the Council seeks to encourage creative thinking about how to advance its goals and to foster the development of new ideas to solve our common problems. There is no minimum request; small requests for funding of

discrete projects are encouraged. The maximum amount of each grant is \$2,500. Projects must be completed by June 30, 2013.

The Council is particularly interested in projects that increase community engagement and result in the formation of new neighborhood or tenant associations, or that are done in partnership with and serve to strengthen existing associations.

Grants require a 100 percent match from other sources or City funding must be used to leverage funding from other sources. Volunteer hours and in-kind services or donations may be used to match City funds.

Complete information is available at www.takomaparkmd.gov/clerk/sc-grants. The deadline for applications is Jan. 28, 2013.

DEADLINE TO SUBMIT FUNDING REQUESTS (\$2,500 AND ABOVE)

The Large Community Grant funding guidelines are available online. The deadline for applications is Jan. 22, 2013. These

grants are for projects to be completed in Fiscal Year 2014. Check www.takomaparkmd.gov/clerk/lg_grant for information. If requests for funds are granted, funds will be available after July 1, 2013.

EMERGENCY PREPAREDNESS COMMITTEE HOLIDAY PARTY

Join the Emergency Preparedness Committee (EPC) for a holiday get-together on Thursday, Jan. 24, 7:30 p.m. in the Hydrangea room of the Takoma Park Community Center. Meet the members, learn about preparedness, consider joining the Committee or find out other ways you can help your community prepare for emergencies.

To encourage participation, the EPC has changed its meeting time. Beginning in January, the EPC will meet every other month on the fourth Thursday at 7:30 p.m. On alternate months, beginning in February, the Committee will meet the fourth Thursday at 8:30 a.m.



HOUSING MAILBOX



City Code will keep you warm this winter

Guidelines regulate hot water and winter heat in rentals

**By Moses A. Wilds, Jr.
Landlord-Tenant Coordinator**

The water in my shower never gets hot. Brrrr! Is there a rental housing requirement that deals with water temperature? Also what is the date that the heat has to be turned on?

Cold showers, oh, no! There's a code for that: Hot water used in every kitchen sink, lavatory basin, bathtub or shower must be at a temperature of no less than 120 degrees or more than 140 degrees Fahrenheit, according to Chapter 26 (Housing and Building Maintenance Standards) of the Montgomery County Code (which has been adopted by the City of Takoma Park).

The same code requires that the temperature in each habitable room or bathroom be maintained at a minimum of 68 degrees Fahrenheit, measured at a distance of three feet above the floor and at least three feet from any exterior wall. There is no turn-on date specified in the code.

If you are cold in your apartment, purchase a small thermometer and measure the temperature in a central location during the morning and evening hours over the period of one week. If the temperature readings are below 68 degrees (measured at three feet above the floor and three feet from any exterior wall), send written notification to your landlord regarding the problem. If your landlord fails to correct the problem, follow up by contacting the Montgomery County Customer Service Hotline, 240-777-0311 or www.montgomery-countymd.gov/311 to file a complaint and request that a code enforcement officer come out to the property and issue a Notice of Violation to the landlord.

In the mean time? Put on another sweater.

Tenants or landlords having questions regarding the City's Landlord-Tenant and COLTA Laws can contact me at 301-891-7215 or at mosesw@takomagov.org.

PURPLE LINE

■ From page 1

The advantages of the Purple Line and the land use plans centered on it are:

- More livable neighborhoods
- Environmental improvements by reducing car use and redeveloping parcels now occupied by small commercial buildings and big parking lots
- A healthier local economy, with tax benefits for Takoma Park, Montgomery County, Prince George's County and the State of Maryland

Funding, however, is only available for planning the Purple Line; there are no funds available to build it. If the State of Maryland cannot identify funds this year for half the cost of constructing the Purple

Line, other proposed transit systems from across the country will take its place in the queue for Federal matching funds. There are good proposals from many other jurisdictions, and the State of Maryland has been warned that the Feds can't wait.

The problem is that the project will cost about \$2 billion to build, and Maryland needs to find the \$1 billion for the Purple Line, a similar amount for the proposed Red Line in Baltimore and a smaller, but still large, amount for the Corridor Cities bus transit line (roughly paralleling I-270). These funds are in addition to the high costs of maintaining the state's existing road and transit infrastructure. The Legislature needs to decide how to come up with the funds to support the three proposed transit systems or make the difficult political choice to postpone or cancel one

or more of them. The fear is that legislators may find it easiest to do nothing.

The City Council feels the importance of the Purple Line to the long term health of the City of Takoma Park is immense. For that reason, it has identified getting the State of Maryland to fund the Purple Line as its highest priority of the upcoming legislative session.

Last year, the Council went on record supporting an increase in the gas tax to add revenue to the Transportation Trust Fund so that the Purple Line can be funded. However, the issues of civil marriage and the Dream Act overshadowed the push for transportation funding.

This year, the Takoma Park City Council is working to see that increasing transportation funding becomes the primary focus of the 2013 Legislative Session.

LEGISLATIVE SESSION

■ From page 1

stabilizing Highway User Revenue (HUR) that municipalities use to pay for street maintenance, are top priorities for the City.

In addition to securing dedicated funding for transportation, the city will be working during the session to:

- Require WSSC to post when there is a sewage leak or other contamination and to inform the affected jurisdiction(s);

- Allow civilian employees, in addition to sworn officers, to maintain and verify the accuracy of speed cameras so that the sworn officers are more available for their official policing duties; and

- Preserve funding for Community Legacy and Program Open Space programs to continue to improve and preserve the City's parks and commercial areas.

The City will also continue its work with the State Highway Administration and elected officials to determine the best

way to maintain MD 410 while ensuring that no additional vehicular lanes will be added through Takoma Park in the future. It is unclear at this time whether legislation will be needed to accomplish this goal.

And finally, the City will continue its efforts to support maintaining health services on the Washington Adventist Hospital grounds in Takoma Park.

City officials are urging residents to stay informed about legislative issues, and hope that they will support the effort to secure transportation funding for the City.

SERVICE OPPORTUNITIES

■ From page 2

business meeting per year. Commissioners are assigned to three-member panels for hearings, which are held as needed. For information, contact Moses Wilds: mosesw@takomagov.org or 301-891-7215.

EMERGENCY PREPAREDNESS COMMITTEE

(three vacancies)

The Emergency Preparedness Committee (EPC) provides community input into the City's planning for emergencies and encourages residents and others to be prepared. Committee membership includes seven Takoma Park residents appointed by the City Council, senior City staff selected by the City Manager, and several members representing other agencies. Resident members serve three-year terms. Currently, the EPC meets the fourth Thursday of each month, alternating between morning meetings (8:30 a.m. to 10 a.m.) and evening meetings (7:30 p.m. to 9 p.m.).

ETHICS COMMISSION

(two vacancies)

The Ethics Commission hears and decides on inquiries and complaints regarding alleged or potential violations of the Ethics Ordinance, issues written advisory opinions, recommends legislative changes and improvements to the Ethics Ordinance, and conducts public education regarding the Ordinance. Up to seven residents may be appointed to the Commission. Members

serve two-year terms. The Commission meets at least quarterly but more often if necessary.

NUCLEAR-FREE TAKOMA PARK COMMITTEE

(two vacancies)

The Nuclear-Free Takoma Park Committee oversees implementation of and adherence to the Takoma Park Nuclear Free Zone Act. The Committee is to consist of seven Takoma Park residents with collective experience in the areas of science, research, finance, law, peace and ethics. Members serve two-year terms. The Committee generally meets the second Tuesday of every other month at 7:30 p.m.

PERSONNEL APPEAL BOARD

(one vacancy)

The Personnel Appeal Board adjudicates employee appeals of the City Manager's decisions regarding employee grievances or dismissals. Five residents are appointed to the Board for three-year terms. The Board meets annually unless called to convene a hearing.

RECOGNITION TASK FORCE – SHORT TERM COMMITMENT

(seven vacancies)

The City Council is looking for how best to recognize and/or memorialize Takoma Park volunteers, leaders, advocates, mentors and others who serve the community. To this end, the Council is forming a Recognition Task Force to propose ideas and programs. The task force will consist

of up to seven members, one appointed by each member of the Council and the Mayor. The Task Force will be asked to complete its work within three to four months. Residents who are interested in making a short term commitment to assist with this process should submit an application form (found at <http://takomaparkmd.gov/committees/comapp.pdf>) or contact Jessie Carpenter, City Clerk, at jessiec@takomagov.org or 301-891-7267 to receive an application.

RECREATION COMMITTEE

(two vacancies)

The Recreation Committee advises the City Council on matters related to recreation programming and facilities. The Committee consists of seven to 15 members appointed to two-year terms. Residency is required. The Committee generally meets the second Thursday of each month at 7 p.m.

SAFE ROADWAYS COMMITTEE – NEWLY REESTABLISHED

(Up to 11 vacancies)

The Safe Roadways Committee will advise the City Council on transportation-related issues including, but not limited to, pedestrian and bicycle facilities and safety, traffic issues, and transit services. The Committee will also encourage Takoma Park residents to use alternatives to driving, including walking, bicycling and transit. Members will be appointed to staggered two-year terms. Residency is required. The meeting schedule will be set based on members' preferences.

THE TAKOMA PARK NEWSLETTER



Editor: Virginia Myers
Production: Electronic Ink
www.takomaparkmd.gov
Vol. 52, No. 1

The Takoma Park Newsletter is published 12 times a year as the official publication of the City of Takoma Park, takomaparkmd.gov.

Letters to the editor, reports by community groups, calendar items and other submissions will be considered for publication; send to tpnewseditor@takomagov.org or Newsletter, City of Takoma Park, 7500 Maple Ave., Takoma Park, MD 20912.

Name, address and telephone number must accompany all submitted material. Editor reserves the right to edit for length, clarity, style, spelling and grammar.

Published material containing opinions does not necessarily reflect the views of the Newsletter or the City of Takoma Park.

The Newsletter does not accept commercial, classified, political advertisements.

The Newsletter is printed on recycled-content paper.



Teen Volunteers worked together to make a festive banner for Takoma Park's Holiday Party Dec. 13. From left, Jennifer Benitez, William Benitez, Grace Morris, Jovanny Bolanos, Emily Benitez and Rhianna Bacchus

Photo by Eric Rasch

TOTS

Let's Pretend

2 ½ – 5 yrs

Preschoolers love to exercise their imaginations through pretend play. Let's Pretend class members will develop this natural creative behavior through dramatic readings, improve sensory exploration, physical experimentation, imagination exercises, singing/movement, props and games. We will warm up (like real actors), read a story, engage in exercises and experiments based on the story, and finally perform the story.

TP Community Center Auditorium
Thursdays, 9:30 – 10:15 a.m. , Jan. 17 – March 7
Fridays, 9:30 – 10:15 a.m., Jan. 18 - March 8
TP residents \$110
Non-residents \$130

YOUTH/TEENS

Double Dutch

Ages 6-14

Learn the art of Double Dutch through a fun and aerobic endurance workout that includes single rope jumping, double dutch turning and jumping, stretching, toning, jogging and calisthenics.

Thursdays, 6:15 – 7:15 p.m. (on-going)
TP Recreation Center
Free with membership card

Girls on the Rise

Ages 10-14

Girls on the Rise is designed to help girls work through the challenges of adolescence. The program encourages positive self esteem, helps navigate through peer problems, explores healthy relationship development and provides support through family challenges, cyber bullying and school challenges. Girls will learn to identify how their emotions play a role in all areas of their life.

Thursdays, 7-8 p.m. (on-going)
TP Recreation Center
Free with membership card

Kid's Night Out

Ages 6-12

Want a night to yourself while your kids have a blast with their friends? Takoma Park Recreation Center Kid's Night Out is a fun filled night for children. It will involve activities such

as games, art and crafts, movies and theme nights.
First and third Fridays, 7:15 – 8:30 p.m.
TP Recreation Center
Free with membership card

Teen Night

Ages 12-17

Nothing to do on Friday night? The Takoma Park Recreation Center provides high quality, affordable, safe and fun activities for teens. Come on out to a night of games, activities and more. Bring your friends for a cheap night out of the house.

Second and fourth Fridays, 7:15 – 8:30 p.m.
TP Recreation Center
Free with membership card

FITNESS/HEALTH/SPORT

Aerobics

Ages 16 and older

This upbeat, energetic aerobics class involves easy-to-follow moves that flow to the non-stop beat, with cardiovascular elements followed by toning exercises for a total body workout.

TP Community Center Dance Studio
Mondays, 6:15 – 7:15 p.m., Jan. 14 - March 4
TP residents \$60
Non-residents \$70
Drop-in \$15

Cardio Kick-Boxing

Ages 16 and older

Cardio KickBoxing is a total body workout that can improve strength, aerobic fitness, flexibility, coordination and balance. Kickboxing can be a great alternative for people who have become bored with weight room cardiovascular activities, such as brisk walking or jogging on a treadmill.

Session 1: Mondays, Jan. 14 – March 18, 7-8 p.m.
(No class on Feb. 18),
TP Recreation Center
\$50/8 weeks

Futsal League

Grades 2 - 4

Futsal, a sport that is similar to soccer, is designed to improve fundamental technique and skill development during the winter months.

For the past two years the program has been filled to capacity with a waiting list, so sign up early.

TP Recreation Center
Sundays, 1 – 5 p.m., Jan. 27 - March 3
TP residents \$60
Non-residents \$70

Health and Wellness Workshops

Ages 18 and older

This workshop will support the Takoma Park community's desire and commitment to live a healthier lifestyle. The goal is to create awareness and a sense of urgency to get and stay healthy. Through education, hands on demonstrations and support, participants will be able to make healthier lifestyle choices on a daily basis. Individuals will benefit from health assessments, weight management tools, vitamin supplement education, food demonstrations and much more.

TP Community Center Auditorium
Thursdays, 7 – 9 p.m.
Jan. 17, Feb. 7 and 21, and March 14 and 28
TP residents \$39
Non-residents \$49

Jazzercise

Ages 16 and older

Jazzercise is the art of Jazz combined with the science of exercise physiology. Each 60-70 minute class includes easy-to-follow, fun aerobic dance routines, weights for muscle strength and stretching exercises all to the beat of great music. The music ranges from oldies to jazz to the newest pop tune.

Mondays and Wednesdays (on-going) 7-8 p.m.
Saturdays (on-going) 8-9 a.m.
(No class on Jan. 19 & 21, 2013/Feb. 16 & 18, 2013)
TP Recreation Center
\$45 per month EFT (Easy Fitness Ticket)
\$110/8 week pass
\$25 joining fee required for EFT
\$15 drop-in (with \$20 fee)

Ladies' Boot Camp I

Age 16 older

A total body program that includes a circuit of drills such as jumping jacks, running, push-ups, squats, crunches and weight training. A challenging workout within a quick hour.
Tuesdays and Thursdays, Jan. 15 – March 7, 6:30-7:30 p.m.

TP Recreation Center
\$85/8 weeks

Ladies Boot Camp II

Age 16 and older

Ladies Boot Camp II is the next phase in cardio and muscle conditioning. It is designed to continue to give you that awesome, fierce look. This workout pushes your endurance and current conditioning. The intervals will be longer and the movements will be more complex. Core and body exercises will reach new levels of intensity. If you have taken Ladies Boot Camp I, you will love Ladies Boot Camp II.

Saturdays, January 12 – March 9,
10:30 – 11:30 a.m.

(No class on Jan. 19 and Feb. 16)

TP Recreation Center
\$45/8 weeks

Pilates

Age 16 and older

A fun and invigorating workout that teaches controlled movements utilizing the body's core – abdomen, back, and hips. Pilates improves core control, coordination, standing alignment and balance with mat exercises. Pilates is the ultimate mind-body exercise for anyone who wants to tone, streamline and realign their body.
Wednesdays, Jan. 9 – Feb.13, 6 -7 p.m.

TP Recreation Center
\$60/6 weeks

Tai Chi

Age 16 and older

Tai Chi is an ancient exercise for cultivating physical and spiritual health. This class covers basic principles and concepts. It has been proven effective in restoring balance and calm in our lives. The slow, gentle movements and relaxed breathing harmonize energy and flow in the body. The class will follow the Yang style short form that was introduced to the West by the renowned Cheng Man Ch'ing.

Tuesdays, 5:30-7 p.m. (on-going)
TP Recreation Center
Free

Tai Chi Chuan

18 and older

Tai Chi Chuan is often referred to as moving meditation and offers many health and relaxation benefits to people of all ages. Regular practice can improve posture, balance, coordination, strength, flexibility, cardiovascular fitness and concentration. This class focuses on the basic principles of Tai Chi by learning the Yang short form style of Tai Chi.

Thursdays, Jan. 17 – March 28
Introduction, 6:15 – 7:15 p.m.
Beginners Plus, 7:15 – 8:15 p.m.
Continuing, 8:15 - 9:15 p.m.
TP Community Center Dance Studio
TP residents \$70
Non-residents \$80

Volleyball Drop-in (COED)

18 and older

Open courts for volleyball will be available for adult drop in play from 8:15 - 9:30 p.m. at the Takoma Park Recreation Center. This program is open to men and women ages 18 and over. Individuals of all skill levels are welcome to participate. All games are self-officiated.
Mondays, 8:15 – 9:30 p.m., Jan. 7 - March 25
TP Recreation Center
\$5 per person, per night (or free with Recreation center membership)

RECREATION

■ From page 4

Yoga Nidra – Meditation and Relaxation

16 and older

This meditative yoga practice helps reduce stress, increases general physical and mental well-being and brings greater joy and ease into everyday life. Students are guided through the meditation while lying on a yoga mat and blankets or seated in a comfortable position. This systematic practice uses positive affirmations, visualization, awareness of the body, breath, and self-inquiry. Each student should bring their own yoga mat, a few blankets, and a pillow.

Mondays, 7:30 – 8:30 p.m.
Session 1: Jan. 14, 26, Feb. 4, 25
TP Community Center Dance Studio
TP residents \$50
Non-residents \$60
Drop-in \$15

Yoga for Beginners

Ages 18 and older

Discover how to work with your body in a safe, gentle, non-competitive way which promotes increased flexibility, strength, balance, and awareness. This class will introduce and develop the foundation of standing poses and basic actions in forward bends, backbends, and twists. Each pose can be modified to accommodate all physical conditions. Come with comfortable clothing (best if your knees, tights or shorts can be seen) and an empty stomach.

Tuesdays, 6 – 7:15 p.m., Jan. 15 - March 19
TP Community Center Dance Studio
TP residents \$100
Non-residents \$120
Drop-in \$15

Yoga and Meditation, Intermediate Level

Ages 18 and older

Iyengar yoga teaches stability and openness through alignment so that the flow of energy and the focus of the mind are found in each pose. This Iyengar yoga class will include inversions and more advanced poses. It is appropriate for those who have a good foundation in standing poses and an understanding of basic alignment. The practice of postures in yoga is traditionally a preparation for meditation. Some time for seated meditation will be included at the end of class. (Chairs and cushions are available).

Tuesdays, 7:30 – 9 p.m., Jan. 15 - March 19
TP Community Center Dance Studio
TP residents \$100
Non-residents \$120
Drop-in \$15

Zumba

Age 16 and older

An exhilarating, effective, easy-to-follow, Latin-inspired, calorie-burning dance fitness program, Zumba fuses hypnotic Latin rhythms and easy-to-follow moves to create a one-of-a-kind fitness program.

Wednesdays, 6-6:55 p.m. (on-going)
Saturdays, 9:15-10:10 a.m. (on-going)
Jan. 9 – Feb. 6
(No class on Jan. 19)
TP Recreation Center
\$40/4 weeks per session
\$10 drop-in fee

ART

Ceramics

Ages 16 and older

Make bowls, vases, mosaics, tiles, sculpture



Young volunteers pitch in during a holiday event for Takoma Park Silver Foxes, who enjoyed music from the New Dimensions Singers, Recreation Department After Care kids, and the Takoma Park Community Band. From left, Jennifer Benitez, William Benitez, Eric Rasch (Recreation Manager) and Susan Leitch.

Photo by Terry Seamens

heads, clay animals and more. Your imagination is your only limit! All glazes are food safe. Tools and other materials provided. There is a \$15 materials fee due to the instructor on the first day of class.

Wednesdays, 6:30 – 8 p.m., Jan. 16 – March 6
Fridays 10:30 a.m. – 12 p.m., Jan. 18 – March 8
TP Community Center Art Studio
TP residents \$80
Non- residents \$100

Collage

Ages 16 and older

Using a variety of collage and paper altering processes, students combine found and altered papers and lightweight three-dimensional materials. Principles of color and design will be presented, such as limiting the color palette and the principles of design will be explored such as structure, balance, repetition, value and gradation. This class is suitable for beginners, as well as more experienced students. Basic materials will be provided (some personal or found collage elements may be desired to enhance the collage as well) There is a \$30 materials fee due on the first day of class.

Tuesdays, 11 a.m – 2 p.m.
Session 1: Jan. 15 - Feb. 26
TP Community Center Art Studio
TP residents \$210
Non-residents \$240

Encaustic Collage - Weekend Workshop

Ages 16 and older

Encaustic collage uses bees wax as an adhesive and allows for layering of papers and lightweight found materials as a base for over painting with oil and encaustic paint. Workshop will cover collage layering using translucent and opaque papers and sculptural effects that can be created with stencils, stamps and incising. All materials will be provided for the \$40 materials fee.

9:30 a.m – 4:30 p.m., Feb. 2 - 3
TP Community Center Art Studio
TP residents \$230
Non-residents \$260

ENVIRONMENTAL

Herbs 101 – The Basics

Ages 18 and older

Herbs have been a worldwide staple for

vitality, health and wellness since time began. They are easy to grow and can be used in a variety of ways. They are especially beneficial in the winter months when cold and flu season arrives and our immune systems are in need of extra support. In this workshop, we will start with the basics and make an herbal tincture to take home.

10 a.m – 12 p.m., Jan. 26
TP Community Center Art Studio
TP residents \$35
Non-residents \$45

Takoma Park Nature Lab

Ages 5 to 10

A club for the curious child who likes collecting, sorting, drawing and finding inspirations in the world around us. Through science, exploration, research and arts lab, the TPNL will explore specimens from our Takoma Park neighborhood and beyond. Exploration may include logging in specimens, mining the nature collection for models, creating a superhero from a leaf or designing a Water-Bear inspired moon-house. A \$10 materials fee due the first day of class.

Saturdays, 10:30 a.m – 12 p.m., Jan. 26 – March 30
TP Community Center Lilac Room
TP residents \$100
Non-residents \$110

COMPUTER/MULTI-MEDIA

High Definition Video for Community Purposes

Ages 16 and older

Learn tips and tricks for creating great-looking high definition video that you can upload to YouTube or burn onto BluRay DVD disks to showcase the strengths of our community. You'll learn to use a Canon Vixia high definition camcorder (that costs \$300), learn homemade affordable lighting, recommended professional microphones, and Roxio Toast 11 software for burning BluRay DVD disks (on inexpensive DVD media.) Watch your crystal clear BluRay videos from the projector in our auditorium. Previous video experience helpful, but not required.

Tuesdays, 6:30 – 9:30 p.m.
Session 1: Jan. 22
TP Community Center Auditorium
TP residents \$29
Non-residents \$39

Master LinkedIn: How to get connected (Beginners)

Ages 25 and older

Want to know more about LinkedIn? We will discuss what LinkedIn is, how to create a profile, how you can use it to build relationships, tips and techniques for best practices and LinkedIn tools and applications. This is a hands-on workshop, so bring your laptop and arrive five minutes early to set up. Optional: Please bring your resume and photo on a USB flash drive or have it saved on your hard drive.

Saturday, 10 a.m. – 12 p.m., Jan. 26
TP Community Center Multi Media Lab
TP residents \$40
Non-residents \$50

Master LinkedIn: Leveraging the power of LinkedIn (Advanced)

Ages 25 and older

Get noticed. Grow your network. We will cover uploading resumes, getting recommendations, importing and managing contacts, invitations, joining groups, searching companies, privacy settings, job searches, questions and answers, tools and applications. This is a hands-on workshop, so bring your laptop and arrive five minutes early to set up. Optional: Please bring your resume and photo on a USB flash drive or have it saved on your hard drive.

Saturday, 1 p.m. – 4 p.m., Jan. 26
TP Community Center Multi Media Lab
TP residents \$60
Non-residents \$70

PETS

Doggie Fun and Games

Dogs of any age

This series of one day sessions will show you a variety of new activities your family can enjoy with your dog. We'll cover hide and seek, tricks, put the toy away, pick the toy, fetch, Frisbee, agility ground work, and maybe even bowling and basketball. If you have any obedience issues you don't know how to resolve, our trainer will work with you on that too.

Jan. 15 – Feb. 26
Tuesdays, 7 – 8 p.m., and Saturdays, 4:30 – 5:30 p.m.
Heffner Park Community Center, 42 Oswego Ave.
TP residents \$20/per dog, per day
Non- residents \$30/per dog, per day

REDISTRICTING
From page 1

2010) reported a population of 16,715 for Takoma Park, less than the 17,299 count reported in 2000. Based on the new population count of each of the City's six wards, redistricting is necessary due to the variance between the wards.

The variables

At the time of the 2010 Census, two multi-family buildings were being renovated and largely vacant. The City Council was concerned that the temporary impact of the vacant buildings on the City's population and the ideal ward size would result in the need for more significant changes in the ward boundaries than would otherwise be necessary.

While all buildings have some vacancies from time to time, the vacancies at 7333 New Hampshire Ave. in Ward 6 and 7610 Maple Ave. in Ward 4 resulted in an obvious under-reporting of current population in those wards. At the Council's request, City staff provided options for determining, in a fair and uniform way, how to conduct a City-wide evaluation of temporarily vacant residential structures to see if they should be considered in estimating the City's population (see box at right).

The method selected by the Council resulted in a new estimate of the City's population of 17,015 for redistricting purposes,

and an ideal ward size of 2,836.

Redistricting Task Force

The City Council appointed a redistricting task force in December 2011 to review the data and develop options for redistricting. The task force began meeting in January 2012. It carefully evaluated the census block data, ward populations, and boundaries. On May 29, the task force presented two options to the Council for consideration.

The Council requested the task force to develop a third option based on the population adjusted for the vacancies at 7333 New Hampshire Ave. and 7610 Maple Ave. Additionally, the Council requested that the task force place a higher priority on keeping neighborhoods together within a ward.

The third option was presented on Oct. 15.

During the tenure of the Redistricting Task Force, it developed and reviewed numerous options, including one that started with a "clean slate" and drew new boundaries to re-create six wards. The clean slate option maintained whole census blocks to ensure that population and racial/ethnic breakdowns would be as accurate as possible. Other options developed were variations on the existing boundaries. The existing ward boundaries incorporate many split census blocks to keep neighborhoods together within a ward.

Ultimately, the City Council chose to develop its own option which it believes would have the least impact on existing neighborhoods and neighborhood associations while still bringing the wards closer to the ideal population size. This is the proposal to be presented for comments at the public hearing on Jan. 14, 2013.

The City Council's Redistricting Proposal

The proposed ward boundaries include the following changes from the current boundaries:

- Mississippi Avenue and Hilltop Road, currently in Ward 5, would move to Ward 4.
Three multi-family buildings on the southwest side of Lee Avenue (the Sherwood, Leeland Apartments, and Hancock Gardens) would move from Ward 3 to Ward 4.
7777 Maple Ave. (Essex House), currently in Ward 4, would move to Ward 5.
The portion of Ward 2 located on the east side of New Hampshire Avenue, including Larch Avenue, Hopewell Avenue, Kentland Avenue, and East West Highway, would move to Ward 6.

A street directory indicating the ward for every address in the City has been developed (see page 8). The directory shows both the existing ward and the proposed ward, if different.

Public Hearing on January 14

The City Council will hold a public hearing on the proposed ward map on Monday, Jan. 14, at 7:30 p.m. in the Takoma Park Auditorium, 7500 Maple Ave.

The public is encouraged to attend the public hearing and sign up to speak.

Written comments may be addressed to clerk@takomagov.org or mailed to City Clerk, 7500 Maple Ave., Takoma Park, Md. 20912.

DETERMINATION OF ELIGIBLE VACANT UNITS FOR ESTIMATING POPULATION

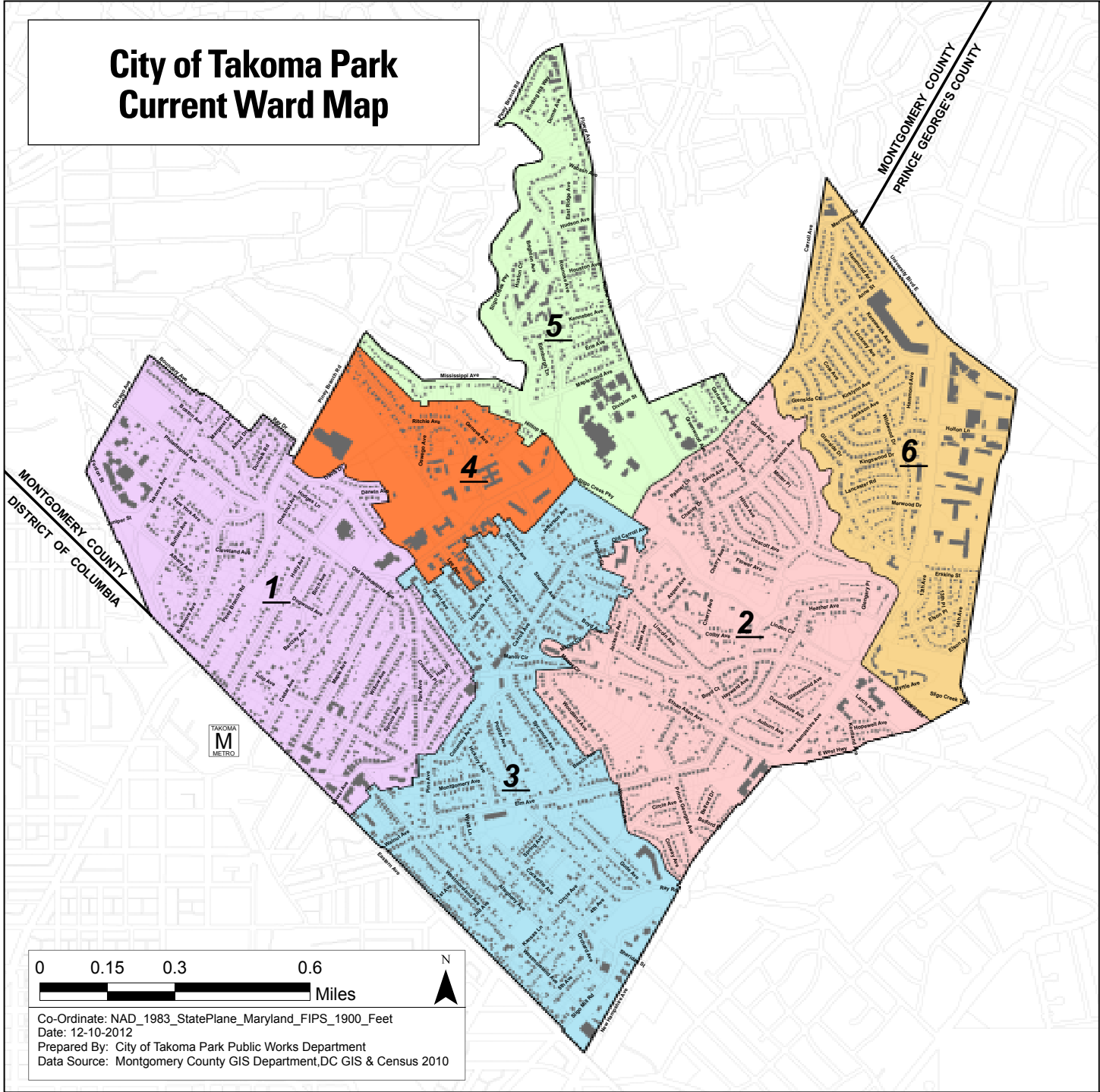
The Council selected a definition of a "qualifying building or complex" as an existing building or complex that had ten or more vacant units on Census Day, was actively being renovated on Census Day, and was either occupied or in the process of being occupied at the time of redistricting.

Two buildings met the definition of a "qualifying building or complex" for the purpose of redistricting after the 2010 Census - 7610 Maple Ave. and 7333 New Hampshire Ave. The persons per household rate for multi-family complexes is 2.27 for Takoma Park. After applying the persons per household rate and the citywide vacancy rate to the number of units rented in 7610 Maple Ave. or sold in 7333 New Hampshire Ave. as of May 31, 2012, the following population adjustments were made:

- 7610 Maple Ave.: 75 people added to the Ward 4 population
7333 New Hampshire Ave.: 225 people added to the Ward 6 population

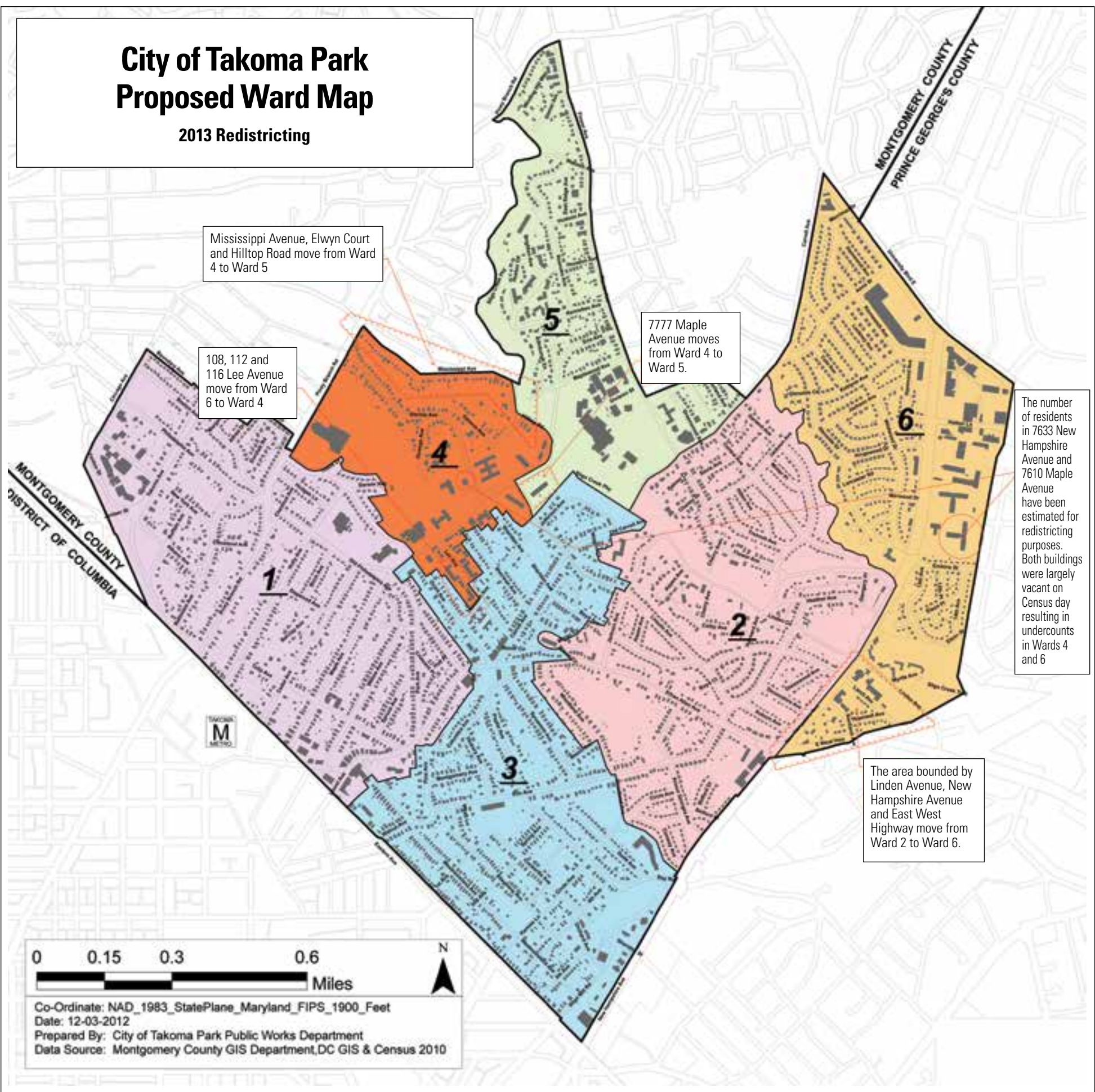
2010 Census (Estimating for Eligible Vacant Units)

Table with 2 columns: Ward, Population. It shows population counts for each ward under two scenarios: Ideal Ward Size - 2,786 and Ideal Ward Size - 2,836.



City of Takoma Park Proposed Ward Map

2013 Redistricting



City of Takoma Park Ward Population Tables

Redistricting 2013 (2010 Census)

Takoma Park - Distribution of Population and Ethnic/Racial Distribution by Ward
Original Adjusted Data*

	Orig Pop	New Pop	Diff	Goal	Hispanic	White	Black	Asian	Other
Ward 1	2748	2748	0	-88	221	2007	332	83	105
				-3%	8%	73%	12%	3%	4%
Ward 2	2999	2999	0	163	322	1737	692	113	134
				6%	11%	58%	23%	4%	4%
Ward 3	3165	3165	0	329	357	1937	667	83	122
				12%	11%	61%	21%	3%	4%
Ward 4	2886	2886	0	50	345	411	1982	77	71
				2%	12%	14%	69%	3%	2%
Ward 5	2569	2569	0	-267	477	709	1115	151	117
				-9%	19%	28%	43%	6%	5%
Ward 6	2648	2648	0	-188	737	460	1130	235	86
				-7%	28%	17%	43%	9%	3%
	17015	17015			2459	7261	5918	742	635
					14%	43%	35%	4%	4%

Ideal Ward Size: 2836
Variance from high to low: 596 (21.02%)
*Adjusted for vacancies in 7633 New Hampshire Avenue and 7610 Maple Avenue.

Takoma Park - Distribution of Population and Ethnic/Racial Distribution by Ward
Proposed

	Orig Pop	New Pop	Diff	Goal	Hispanic	White	Black	Asian	Other
Ward 1	2748	2748	0	-88	221	2007	332	83	105
				-3%	8%	73%	12%	3%	4%
Ward 2	2999	2907	-92	71	300	1711	664	109	122
				3%	10%	59%	23%	4%	4%
Ward 3	3165	2974	-191	138	321	1877	586	79	112
				5%	11%	63%	20%	3%	4%
Ward 4	2886	2853	-33	17	360	533	1789	88	83
				1%	13%	19%	63%	3%	3%
Ward 5	2569	2793	224	-43	498	647	1389	144	115
				-2%	18%	23%	50%	5%	4%
Ward 6	2648	2740	92	-96	759	486	1158	239	98
				-3%	28%	18%	42%	9%	4%
	17015	17015			2459	7261	5918	742	635
					14%	43%	35%	4%	4%

Ideal Ward Size: 2836
Variance from high to low: 234 (8.24%)

2013 District Plan and Street Directory (proposed December 3, 2012)

Street Name	Address Range	Ward
Albany Ave.	500 block, odd & even	1
Alfred Drive	7500-7504, even	1
Alfred Drive	7501-7517, odd	1
Allegheny Ave.	6400-6800 block, odd & even	3
Anne Street	800-1100 block, odd & even	6
Aspen Ave.	7000 block, odd & even	2
Aspen Ave.	7400 block, odd & even	2
Aspen Court	7400 block, odd & even	2
Auburn Ave.	700 block, odd & even	2
Austin Place	Unit block, odd & even	1
Baltimore Ave.	7300-7400 block, odd & even	1
Barclay Ave.	Unit block, odd & even	1
Beech Ave.	400 block, odd & even	3
Belford Drive	6800 block, odd & even	2
Belford Place	400-500 block, odd & even	2
Birch Ave.	7300-7400 block, odd & even	1
Boston Ave.	400-700 block, odd & even	1
Boundary Ave.	706-730, even only	1
Boyd Ave.	300-321, odd & even	3
Boyd Ave.	322-336, even only	3
Boyd Ave.	327-349, odd only	2
Boyd Ave.	400 block, odd & even	2
Boyd Court	500 block, odd & even	2
Brashear Place	(paper street)	1
Brighton Ave.	(no street addresses)	5
Buffalo Ave.	7391 only	1
Buffalo Ave.	7400 block, odd & even	1
Carroll Ave.	6900-7100, odd & even	1
Carroll Ave.	7200, 7206 only	1
Carroll Ave.	7201-7519, odd only	3
Carroll Ave.	7212-7500 block, even only	3
Carroll Ave.	7525, 7533, 7537 only	2
Carroll Ave.	7600 block, odd & even	2
Carroll Ave.	7700-7800 blocks, even only	5
Carroll Ave.	7701-7813, odd only	2
Carroll Ave.	7901-8205, odd only	6
Carroll Ave.	8316 only (a.k.a. 925 University)	6
Cedar Ave.	7100-7400 block, odd & even	1
Central Ave.	7100-7603, odd & even	2
Chaney Drive	700 block, odd & even	2
Cherry Ave.	6900-7000 block, odd & even	2
Chestnut Ave.	7400-7500 block, odd & even	1
Chicago Ave.	7705-7815, odd only	1
Circle Ave.	300 block, odd & even	3
Circle Ave.	400 block, odd & even	2
Cleveland Ave.	Unit block, odd & even	1
Cockerille Ave.	6500-6700 block, odd & even	3
Colby Ave.	700-800 block, odd & even	2
Cole Ave.	7800-7900 block, odd & even	6
Columbia Ave.	Unit block, odd & even	3
Conway Ave.	6700 block, odd & even	2
Crescent Place	Unit block, odd & even	1
Darwin Ave.	Unit block, odd & even	1
Davis Ave.	800-900 block, odd & even	2
Devonshire Road	700 block, odd & even	2
Dogwood Ave.	200 block, odd & even	1
Domer Ave.	200 block, odd & even	5
Dundalk Road	7500 block, odd & even	1
Eastern Ave.	6301-6857, odd only	3
Eastern Ave.	7001-7099, odd only	1
Eastridge Ave.	8300 block, odd & even	5
East-West Highway	900-1002, even only	2 6
Edinburgh Lane	7900-8000 block, odd & even	5
Elm Ave.	Unit-400 block, odd & even	3
Elm Ave.	500-1000 block, odd & even	2
Elson Court	1300 block, odd & even	6
Elson Place	1200-1300 block, odd & even	6
Elson Street	1306, 1308 only	6

Street Name	Address Range	Ward
Elwyn Court	Unit block, odd & even	5 4
Erie Ave.	700 block, odd & even	5
Erskine Street	1300-1402, odd & even	6
Ethan Allen Ave.	200 block, odd & even	3
Ethan Allen Ave.	300-700 block, odd & even	2
Fenton Street	7600 block, odd & even	1
Flower Ave.	7200-7500 blocks, odd & even	2
Flower Ave.	7600-7709, odd & even	5
Flower Ave.	7710-8600 block, even only	5
Freemont Ave.	Unit block, odd & even	3
Garland Ave.	7100-7699, odd & even	2
Garland Ave.	7700-7721, odd & even	5
Geneva Ave.	100-200 block, odd & even	4
Glaizewood Ave.	900 block, odd & even	2
Glaizewood Court	900 block, odd & even	2
Glengary Place	7200 block, odd & even	2
Glenside Court	7600 block, odd & even	6
Glenside Drive	7300-7900 block, odd & even	6
Grant Ave.	Unit-100 block, odd & even	3
Grant Ave.	200-300 block, odd & even	1
Greenwood Ave.	7700-7727, odd & even	5
Gude Ave.	6600-6700 blocks, odd & even	3
Hammond Ave.	7600-8100 blocks, odd & even	6
Hancock Ave.	7300-7500 blocks, odd & even	3
Haverford Road	1100 block, odd & even	6
Hayward Ave.	800 block, odd & even	2
Heather Ave.	900-1000 blocks, odd & even	2
Hickory Ave.	Unit block, odd & even	3
Highland Ave.	6500 block, odd and even	3
Hilltop Road	200-300 blocks, odd only	5 4
Hillwood Court	1101-1113, odd only	6
Hilton Ave.	7200-7300 blocks, odd & even	2
Hodges Lane	98-200 block, odd & even	1
Holly Ave.	7100-7500 blocks, odd & even	1
Holt Place	Unit block, odd & even	1
Holton Lane	1100-1300 blocks, odd & even	6
Hopewell Ave.	1000 block, odd & even	2 6
Houston Ave.	600-700 blocks, odd & even	5
Houston Court	8200 block, odd & even	5
Hudson Ave.	600-700 blocks, odd & even	5
Jackson Ave.	700-1000 blocks, odd & even	2
Jackson Ave.	1100-1200 blocks, odd & even	6
Jackson Ave.	7300-7500 blocks, odd & even	2
Jefferson Ave.	Unit block, odd & even	3
Kansas Lane	6400-6500 blocks, odd & even	3
Kennebec Ave.	600-700 blocks, odd & even	5
Kennewick Ave.	7800-8100 blocks, odd & even	6
Kentland Ave.	900-1000 block, odd & even	2 6
Kingwood Drive	1100-1200 blocks, odd & even	6
Kirklynn Ave.	1100-1300 blocks, odd & even	6
Lancaster Road	1100 block, odd & even	6
Larch Ave.	800-900 blocks 1103, odd & even	2
Larch Ave.	1000-1100 blocks, odd and even	2 6
Laurel Ave.	6900 block, odd & even	1
Lee Ave.	Unit block, odd & even	3
Lee Ave.	111 and 115 only	4
Lee Ave.	108-116, even only	3 4
Lee Ave.	117-199, odd & even	4
Lincoln Ave.	100 block, odd & even	4
Lincoln Ave.	200-300 block, odd & even	3
Lincoln Ave.	400-500 block, odd & even	2
Linden Ave.	1100-1110, even only	6
Linden Circle	800 block, odd & even	2
Lockney Ave.	7800-8100 block, odd & even	6
Manor Circle	0-24, even only	2
Manor Circle	200-250, odd & even	3
Manor Circle	251 only	2
Manor Circle	252-260, odd & even	3

Street Name	Address Range	Ward
Maple Ave.	7100-7400 blocks, odd & even	1
Maple Ave.	7500 only	1
Maple Ave.	7510 -7777 7738, odd & even	4
Maple Ave.	7777 only	4 5
Maple Ave.	8000 block, odd & even	5
Maplewood Ave.	600-700 blocks, odd & even	5
Margaret Drive	500-510, odd & even	1
Merrimac Drive	900 block, odd & even	6
Merwood Drive	1100 block, odd & even	6
Merwood Drive	1200 block, odd & even	6
Minter Place	7200 block, odd & even	2
Mississippi Ave.	300-426, even only	5 4
Montgomery Ave.	1-25, odd & even	3
Myrtle Ave.	1200 block, odd & even	6
New Hampshire Ave.	6300-6700 blocks, even only	3
New Hampshire Ave.	6800-7200 blocks, odd & even only	2
New Hampshire Ave.	6900-7200 blocks, odd only	2 6
New Hampshire Ave.	7300-7600 blocks, odd & even	6
New Hampshire Ave.	7300-7600 blocks, even only	6
New York Ave.	500-700 blocks, odd & even	1
Niagara Court	300 block, odd & even	3
Old Carroll Road	Unit block, odd & even	2
Orchard Ave.	6400 block, odd & even	3
Oswego Ave.	Unit block, odd & even	4
Palmer Lane	7500 block, odd & even	2
Park Ave.	100-200 blocks, odd & even	1
Philadelphia Ave.	Unit-700 blocks, odd & even	1
Pine Ave.	Unit block, odd & even	3
Piney Branch Road	7300-7500 blocks, odd & even	1
Piney Branch Road	7600-7900 blocks, odd only	4
Piney Branch Road	8400 block, odd only	5
Poplar Ave.	6500-7100 blocks, odd & even	3
Prince George's Ave.	6700-6900 blocks, odd & even	2
Ray Drive	600-610, even only	1
Ritchie Ave.	Unit-100 blocks, odd & even	4
Roanoke Ave.	8100-8300 blocks, odd & even	5
Sheridan Ave.	100 block, odd & even	3
Sheridan Street	500 block, odd & even	3
Sherman Ave.	Unit-100 blocks, odd & even	3
Sligo Creek Parkway	609 only	2
Sligo Creek Parkway	702-1100 blocks, odd & even	2
Sligo Creek Parkway	7911-8500 blocks, odd & even	5
Sligo Mill Road	6400-6500 blocks, odd & even	3
Spring Ave.	200 block, odd & even	3
Spruce Ave.	7200 block, odd & even	1
Sycamore Ave.	6901-7133, odd & even	3
Takoma Ave.	7301-7907, odd & even	1
Travis Drive	(no street addresses)	1
Trescott Ave.	7200-7300 blocks, odd & even	2
Tulip Ave.	100-500 blocks, odd & even	1
University Boulevard	925-1355, odd only	6
Valley View Ave.	Unit block, odd & even	1
Wabash Ave.	700 block, odd & even	5
Walnut Ave.	Unit block, odd & even	3
Westmoreland Ave.	6300-7000 blocks, odd & even	3
Wildwood Drive	7300-8000 blocks, odd & even	6
Willow Ave.	7100-7300 blocks, odd & even	1
Winchester Ave.	(no street addresses)	2
Winding Hill Way	200 block	5
Woodland Ave.	6800-7100 blocks, odd & even	2
Wyatt Lane	(no street addresses)	3
First Ave.	100 block, odd & even	3
Second Ave.	6500 block, odd and even	3
Fourth Ave.	6400-6500 blocks, odd & even	3
Fifth Ave.	6400 blocks odd & even	3
13th Ave.	7100-7200 blocks, odd & even	6
13th Place	7200 block, odd & even	6
14th Ave.	7100-7200 blocks, odd & even	6

Four New Exhibits in the Galleries at the Community Center

Opening reception Friday, Jan. 11,
6 – 8 p.m.

Takoma Park Community Center
7500 Maple Ave., Takoma Park MD
Free

Alice Shih (Gallery 3)

In this new body of work, Alice Shih paints and collages to continue her search for ambiguous space. Through the use of old paintings and drawings, the collages are cut and torn, reconfigured and repurposed into new compositions. Expanding her palette, the new paintings take advantage of the unique characteristics of acrylic paint. Shih works on multiple paintings at a time, allowing time for each painting to discover itself. Multiple methods of painting come together on one surface, challenging the viewer to look and discover a new landscape.

Mohamed “Amdy” Adje (Atrium Gallery)

“Everything I see, every day, serves as inspiration,” says Mohamed “Amdy” Adje. “As Picasso said, ‘I do not seek, I find.’ Colors, forms, shapes and the relationship of those elements just come to me. I don’t think about it – I just paint and draw. I have to paint. My sense of color is influenced by memories of my homeland, Senegal: the constant sunshine, brilliant dress, loud sounds.”

Michaele Harrington (Dempsey Memorial Gallery)

This series of paintings explores shifts in Michaele Harrington’s self-identity by filtering her experiences through symbols of her Celtic heritage. Runes are an alphabet, but each rune also carries metaphorical meaning. It is the metaphor—the archetypes and their embedded associations—that intrigue the artist and open a door to the transcendental. Harrington considers each symbol as an archetype. One needn’t know the meanings of the runes to appreciate the visual images, but through the use of the rune ‘keys’ posted next to the paintings, you may begin to develop a meaningful dialogue with the painting, using your own experiences as a template, creating meditations with personal meaning to themselves.

Thien Nguyen (Corridor Gallery)

“For me, the most important is the form, the lines, curves and proportions of the pot,” says Thien Nguyen. “I get a little obsessive about form. I am the opposite when it comes to firing. I can never predict how a raku pot will turn out in the firing. The interaction of the glaze with the smoke and fire is different every time. I like the surprise when the smoke clears.”



Mark H. Rooney, Kristen Koyama and Paul Bodnar, of Kizuna.

Kizuna presents an evening of Japanese Drumming

Saturday, Jan. 26, 7:30 p.m.

Takoma Park Community Center Auditorium
Free

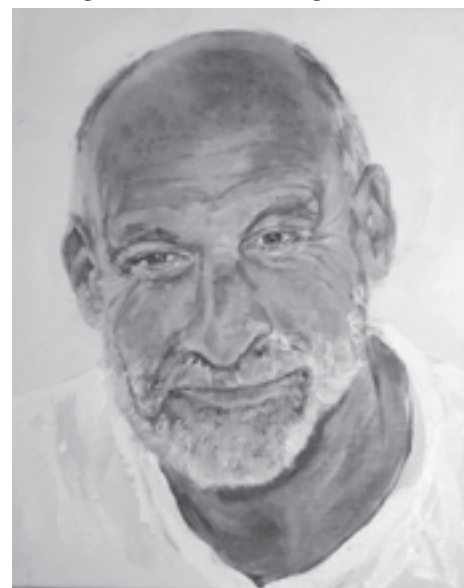
We are Takoma promises a dynamic high energy evening of passion, power and precision with Kizuna – the DC-based trio whose members collectively bring more than 30 years of diverse taiko experience to the stage.

According to Japanese myth, taiko was started by Ame no Uzume, the Shinto

goddess of dawn, mirth and revelry in an effort to cheer up the Sun goddess Amaterasu, who, fed up with her younger brother, hid herself in a cave causing the world to become dark. The other Shinto deities tried to mollify her, holding a big party in front of the cave in hopes of brightening the world once again. Taiko came into being when Ame no Uzume danced, noisily stamping her feet on a wooden tub and making such a thundering sound that

Amaterasu couldn’t help but come out of the cave. Thus, taiko was born.

Kizuna reunites three friends who love to share taiko with each other and with audiences. As performers, they seek to embody the synergy of sound and dynamic movement that distinguishes taiko as an art form, as well as the spirit of “kizuna,” the bond of friendship that is the foundation of the North American taiko community.



Takoma Faces art project celebrates 100 portraits

In the two-plus years it’s taken to finish the 100 portraits that make up “Takoma Park: A Portrait,” many of the people portrayed have moved on: some have grown up, some have moved away, some have simply disappeared. Their images, however live on: a representation of the rich diversity of the City, and an array of different genders, ages and ethnicities.

Now that the project is complete, artist Carolyn James wants to thank each of the subjects and celebrate the final collection

with a party. “It could be a terrific celebration of who we are,” she says.

The event will be held on Jan. 26 from 3:30 to 5:30 p.m., at the Takoma Park Community Center. Anyone portrayed in the collection, or anyone who knows a face hanging in the collection in the hall of the Community Center is invited, and encouraged to bring friends.

For more information, see James’ blog, www.takomaparkaportrait.blogspot.com.

Artist presents Book of Wishes workshop

Saturday, Jan. 5, 1 – 2:30 pm.

Takoma Park Community Center Art Room • Free

Continuing the theme of December’s exhibits – bookmaking – artist Sushmita Mazumdar will present her story of how a Buddhist Prayer Wheel inspired her to create a little secret book for her own wishes, hopes and promises. Mazumdar will show participants how she made her Book of Wishes, decorated with script from prayer flags as seen in her work, Arjun’s Journey.

Participants can make their own Book of Wishes, filled with personal hopes for the New Year and ready to wear home! This hands-on arts opportunity is open to adults and families with children ages 5 and up.



LIBRARY



From left: William Alexander, Katherine Boo, Louise Erdrich, and David Ferry

A. HOYER/PatrickMcMullan.com

National Book Award winners highlight best of 2012

By Ellen Robbins

It's been a year full of great reads. Here are some of the more notable winners.

Among the National Book Awards, Katherine Boo, a Pulitzer Prize winner and a staff writer for "The New Yorker," won best non-fiction. "Behind the Beautiful Forevers: Life, Death, and Hope in a Mumbai Undercity" was based on three years of reporting, and vividly illuminates the inequalities of present day India. "Small stories in so-called hidden places matter," she said in accepting the award.

Novelist Louise Erdrich won the best fiction award for her novel "Round House." Set in a fictional North Dakota reservation, it tells the story of 13-year-old Joe, who with his friends must investigate the

rape and attempted murder of his mother because no one else will. Years later, Joe becomes a public prosecutor. The *New York Times Book Review* says his narrative "shows how a seemingly isolated crime has many roots."

Eighty-eight-year-old poet David Ferry won the award for, "Bewilderment: New Poems and Translations," and "Goblin Secrets" by William Alexander won the Young People's Literature Award.

Many other books published in 2012 received awards, rave reviews, or were on 'year's best' lists. Here are just a few of the 'Best Books' as recommended by reviewers, editors and the Takoma Park Library staff:

"This is How You Lose Her" by Junot Diaz is the narrative of a young Dominican man, a serial "cheater" who lies to all the women

in his life — even the one he truly loves.

"When I Was a Child I Read Books" by Marilynne Robinson, is "...by far Robinson's most political work to date, and is a defense of what she considers the grand traditions of American democracy — generosity, hope, and radical openness to new experience — waged against a society that seems to believe itself in irreversible decline," *Charles Petersen, Bookforum*

"Farther Away: Essays" by Jonathan Franzen is, "From beginning to end, a celebration of love: what joys it brings and what terrors it produces..." "Farther Away" takes its title from the *New Yorker* essay in which Franzen first discussed the suicide of his friend, the novelist David Foster Wallace," *Anthony Domestico, Christian Science Monitor*

AWARD WINNERS ☐ Page 11

LIBRARY BRIEFS

■ Come warm up with some **FIRESIDE TALES** from award-winning storyteller Candace Wolf on Monday, Jan. 14 at 7:30 p.m. Stories will include "the Magic Bowl" (what do you think happens when two brothers make wishes?), "Bill Bill Visits the King" (starring the very brave duck and his unusual friends) and "The Girl with No Story to Tell" (strange and mysterious things happen to children who don't know any stories). Our program is free and best for ages 5 and up; registration is encouraged. To register go to www.tinyurl.com/tplibraryevents or call 301-891-7259.

■ Join us at the Takoma Park Community Center auditorium on Tuesday, Jan. 15 at 7 p.m., as we partner with Politics & Prose Bookstore to watch a **LIVE STREAMING OF "AN EVENING OF AWESOME."** Hosted by top young adult author John Green

("The Fault in Our Stars") and his brother Hank Green, original creator of the Green Brothers' "Nerdfighters" website, the actual event will take place at Carnegie Hall and is sold out. But the program, which will include surprise visits by other authors and music by the Mountain Goats, will be live-streamed on the big screen in Takoma Park's Community Center auditorium. Come and gather with other John and Hank Green fans — and other "Nerdfighters" to enjoy this unique program. Politics & Prose will be selling book, but no purchase is necessary to attend. Spaces are limited, registration is required. To register, go to <http://tinyurl.com/AwesomeNerdfighters>.

■ There will be **NO SPANISH CIRCLE TIME** for the first two Thursdays in January, Jan. 3 and 10, as Señora Geiza will be away. Spanish Circle Time returns Thursday, Jan. 17 at 10:30 a.m. No registration necessary for this fun program.

■ You don't have to be a kid to join us each month at our **CALDECOTT MEDAL BIRTHDAY CLUB** and enjoy some of the best children's picture books ever published. Our next meeting will take place on Wednesday, Jan. 9 at 7 p.m., when we'll be reading some Caldecott winners from the 1980s. The Caldecott Medal is given annually by the American Library Association to the best-illustrated children's book, and several Caldecott Honor books also are often chosen. Our 1980s books will include such favorites as "Jumanji" and "The Polar Express," both written and illustrated by Chris Van Allsburg; "Fables," written and illustrated by Arnold Lobel; "King Bidgood's in the Bathtub," written by Audrey Wood and illustrated by Don Wood; and "Goldilocks and the Three Bears" illustrated by James Marshall. We'll have lemonade and cookies to make this a festive event. No registration required.

Friends read Willa Cather

Join the Friends Reading Group on Tuesday, Feb. 12 at 7:30 p.m. in the Takoma Park Community Center Hydrangea Room for a discussion of Willa Cather's classic, "Death Comes for the Archbishop."

Written in 1927, this work is among the best known of Cather's 12 novels, along with "My Antonia" and "O Pioneers." It tells the story of Father Jean Marie Latour, who came to New Mexico in 1851 as its new Bishop, following its transition from a Mexican to an American territory. In the years that follow, "Latour spreads his faith in the only way he knows — gently, although he must contend with an unforgiving landscape, derelict and sometimes openly rebellious priests, and his own loneliness" (publisher's note).

The *New York Times* reviewer called this, "A truly remarkable book... Soaked through and through with atmosphere... From the riches of her imagination and sympathy Miss Cather has distilled a very rare piece of literature. It stands out from the very resistance it opposes to classification."

A. S. Byatt wrote, "[Cather's] descriptions of the Indian mesa towns on the rock are as beautiful, as unjudging, as lucid, as her descriptions of the Bishop's cathedral. It is an art of 'making,' of separate objects, whose whole effect works slowly and mysteriously in the reader, and cannot be summed up... Cather's acceptance of mystery is a major, and rare, artistic achievement."

The Friends Reading Group discussions are open to all. Discussions of James Joyce's "Ulysses" will begin on March 6, with a special introductory lecture.

CALENDAR

Circle Time

Every Tuesday (no program Jan. 1)
Two times: 10 a.m. OR 11 a.m.

Spanish Circle Time

Every Thursday (Exception: no programs Jan. 3 or 10)
10:30 a.m. with Señora Geiza

Petites Chansons

Saturday, Jan. 5, 10:30 a.m.
Come sing French songs and rhymes with Madame Marie.

Bedtime Stories

Monday, Jan. 7, 7 p.m.
Come in pjs; great for babies, toddlers, preschoolers and their grown-ups.

Comics Jam

Tuesday, Jan. 8, 4 p.m.
Dave Burbank reads comics on the big screen.

Caldecott Birthday Club

Tuesday, Jan. 8 at 7 p.m.
Caldecott-winning books from the 1980s.

Fireside Tales

Monday, Jan. 14, 7 p.m.
Storyteller Candace Wolf

John Green Live-Streaming Event

Tuesday, Jan. 15, 7 p.m.
Takoma Park Community Center Auditorium
Pre-registration required.

AWARD WINNERS

■ From page 10

"The Song of Achilles," by Madeline Miller is the author's debut reinterpretation of "The Iliad" and deservedly won the 2012 Orange Prize for Fiction. It offers a "masterly vision of the valor, drama, and tragedy of the Trojan War," *Library Journal*

"NW" by Zadie Smith, "Relating the story of four people in North West London, Smith articulates important issues of race and class...an aesthetic and emotional knock-out," *Library Journal*

"No One is Here Except All of Us," by Ramona Ausubel is 'An achingly lyrical tale of a Jewish village whose inhabitants choose to reinvent their entire world to protect themselves from the impending Nazi arrival,' *Huffington Post*

In "Gone Girl," by Gillian Flynn, "Readers who prefer more virulent strains of unreality will appreciate the sneaky mind games [in this] thriller rooted in the portrait of a tricky and troubled marriage," *NY Times*

In "Half-Blood Blues," by Esi Edugyan, winner of the Giller Prize, "Sid Griffiths of the Hot-Time Swingers remembers his band's fate as it met the challenges of Nazi power and human frailty," *Library Journal*

In "Crusoe: Daniel Defoe, Robert Knox, and the Creation of a Myth," Katherine Frank. Author Frank "alternately explores Defoe's life of astonishing intellectual activity and that of East India Company sea captain Robert Knox, who, decades before Defoe's novel, was taken prisoner on the island of Ceylon where he remained for over 20 years before escaping and writing of it," *Library Journal*

"Wild: From Lost to Found on the Pacific Crest Trail," by Cheryl Strayed is the story of one woman's 1,100-mile journey on the Pacific Crest Trail, and how she heals and strengthens herself in the process. Now an *Oprah's Book Club* book.

"The Black Count: Glory, Revolution, Betrayal, and The Real Count of Monte Cristo," by Tom Reiss is called "a groundbreaking narrative," this book tells the true story of Alex Dumas, whose exploits became inspiration for "The Three Musketeers" and "The Count of Monte Cristo," — both written by his son Alexander Dumas. "No one who reads this biography will be able to read 'The Count of Monte Cristo' or any history of slavery in the New World in the same way again," *Henry Louis Gates, Jr.*

"The Receptionist: An Education at the New Yorker," by Janet Groth is the fascinating story of Troth's 20-year career at the *New Yorker* magazine. An aspiring writer herself, she finds her voice in this memoir, rich with insightful anecdotes about such luminaries as editor E.B. White, poet John Berryman, playwright Muriel Spark, Calvin Trillin, Charles Adams, and many more.

In "The Odyssey of KP2: An Orphan Seal, a Marine Biologist, and the Fight to Save a Species," by Terrie M. Williams, an orphaned two-day-old Hawaiian monk seal is one of the most endangered marine mammal species in U.S. waters. Deemed too precious to lose, this is the story of his rescue.

"Outrage: An Inspector Erlendur Novel," by Arnaldur Indridason is the latest in this exciting mystery series. "A commanding new voice...puts Iceland on the map as a major destination for enthusiasts of Nordic crime fiction," *New York Times Book Review*



AT YOUR SERVICE

Make Way for Snow Plows

By Suzanne Ludlow
Acting City Manager

If you listen to the various weather predictions making their rounds, you know we may be facing a colder and snowier winter than average this year. Even a warm winter can have a major snow event, however, so it's good to prepare for snow.

Besides the emergency preparations every household needs to make, there are two simple ways you can help the whole community get through a snow event quickly: make way for snow plows and help clear the sidewalks.

If you have a car, please try to park it off the street in a driveway or parking lot when snow is predicted. If you have to park on the street, work with your neighbors to park on one side of the street one night and on the other side of the street the next. (A good rule of thumb is that if it's 9 p.m. on an odd day, park on the odd side of the street; if it's 9 p.m. on an even day, park on the even side of the street.)

Or, if parking is only on one side, park together at one end of the block one night and the other end of the block once that area is cleared. Keeping cars off the street allows the snowplows to do a good job.

For folks who own property with parking lots or driveways, please work to clear the lots and then let others park there, too, if there is room.

Please clear sidewalks promptly and help shovel paths at intersections and bus stops (I know...sometimes through plowed snow!) to allow people to walk safely. Shovel out fire hydrants, if possible. If a deep snow is predicted, put a tall stick near the hydrant so that it may be found quickly. Again, work with your neighbors to adopt a corner or bus stop or hydrant and take turns keeping it clear.

Please never plow or shovel snow out into the street. That only causes problems for others.

Other ways to help include organizing a neighborhood snow parking and shoveling plan, identifying neighborhood teens and others willing to help shovel when



needed, identifying those who would need others to shovel or move their cars for them, sharing shovels and scrapers, or just planning to have hot chocolate and snacks for those doing the work.

If you have a unique plan in place or a problem area, let the City know and we'll try to work with you: contact me, Suzanne Ludlow, at suzannel@takomagov.org or 301-89107229. We'll do our part by letting you know when enough snow is predicted that we will be doing snow plowing.



As of Nov. 30, the Takoma Park Volunteer Fire Department and the personnel of the Montgomery County Fire and Rescue Service assigned to the station have responded to 591 fire-related incidents in 2012. The department addressed or assisted with 2,712 rescue or ambulance-related incidents for a total of 3,303 this year. Totals for 2011 were 776 and 2,611, representing an increase of 8 incidents.

TPVFD volunteers contribute

During the month of November, volunteers put in a total 812 hours of standby time at the fire station. The grand total so far this year is 12,959.5 hours.

Tree sale benefit sells out

On behalf of the Takoma Park VFD, firefighters want to thank all the Christmas tree shoppers who stopped by at the VFD tree lot to purchase a Christmas tree. Trees sold out in two weeks, and the department hopes to continue the tradition

next year.

Fire Safety Tips for the New Year

- Make sure you have working smoke alarms on all levels of your home, especially outside of the bedrooms.
- Escape Planning Practice: E.D.I.T.H. — Exit Drill In The Home, draw an escape plan for your family, show two ways out of every room in the event of a fire. Practice it monthly.
- Cooking: never leave it unattended.
- Emergency Telephone Number: Make sure everyone knows how to call the fire department. Dial 911.
- Address Numbers: Take a look at your numbers, will the fire department or ambulance find your house in the event of an emergency?
- Have your heating system checked and cleaned annually.
- When you have a fire in a fireplace, always use a fire screen. Keep the adjacent area clear of combustibles.
- Space heaters need space. They should be at least 36 inches from combustibles.
- Candles: Never leave a candle burning unattended. When you leave the room with one in it, put it out! Especially when you go to bed.
- Store matches and lighters out of the reach of children.
- Should we get snow, make sure if you

have a fire hydrant close to your house it is kept cleared of the snow.

Finally, if you still have your Christmas tree, and you are ready to dispose of it, get it out and away from your house. Public Works will pick them up with January yard waste collection.

On behalf of the entire fire department, we want to wish all of you a Happy holiday and happy, safe new year.

TPVFD Annual Dinners for Needy Families

This year the Takoma Park Volunteer Fire Department provided 18 families with dinners for Thanksgiving. Thanks to member Dave Hooker for delivering the dinners. This marks the 18th year the department has helped families in need. The program would not have been possible without the support of the following —Takoma Park Lions Club, Takoma Park VFW Post 350, Kiki Oliver, Takoma Park VFD and Auxiliary.

A First for Takoma Park Fire Department

At the Dec. 12 membership meeting, Tina Willey was voted to serve on the department's Board of Directors. She joins her husband Richard who is currently the Vice President. They are the first husband and wife to serve together on a Board. Congratulations!

JANUARY '13

Do you have an item for the City calendar?

Let us know if you have a non-profit event that would be of interest to City of Takoma Park residents, and we'll consider it for inclusion in the calendar. Deadline for the February 2013 issue is Jan. 21.

To submit calendar items, email tpnewseditor@takomagov.org.

"TP Community Center" is the Takoma Park Community Center, 7500 Maple Ave., Takoma Park.

All addresses are in Takoma Park unless otherwise noted.



Yes We Did: the People's Inauguration

Wednesday, Jan. 16, 7:30 p.m.

Screening and Discussion with filmmakers Brian Pascale and Andre Dahlman

Free Admission

Yes We Did is the story of a historic event — the inauguration of America's first black president — told through the eyes of ordinary citizens who came together on a very cold January day back in 2008. The filmmakers spent five days shooting with two sepa-

rate crews. They are there for the parade rehearsal. They talk to nouveau landlords who rented their apartments, houses and office space to the massive number of people descending on the city. They visit a sold-out campground where hardcore campers found an affordable alternative to the inflated cost of hotels.

Following the 75-minute film, filmmakers Brian Pascale and Andre Dahlman will answer questions about the making of the film.

www.educare-supportservices.org

Video Americain Farewell

Friday, Jan. 11, 6 – 9 p.m.

6937 Laurel Ave., Takoma Park

Celebrating 18 years in the community

Speakers, film, music

Bring finger food and drinks to share

Emergency Preparedness Committee Holiday Party

Thursday, Jan. 24, 7:30 p.m.

Takoma Park Community Center

Community welcome

ARTS AND LITERATURE

Takoma Spark House Jam

Wednesdays after 8 p.m., ongoing

Informal gathering on the front porch

7206 Carroll Ave. across from the firehouse

Bring an instrument or sit back and listen

Wednesday Night Drum Jams

Hosted by Katy Gaughan and friends

Wednesdays, 7 – 9:30 p.m.

The Electric Maid, 268 Carroll Street NW, Takoma, D.C.

i.v. Two for One, facilitated by Kelly Bond

Jan. 3

Dance Exchange, 7117 Maple Ave.

Two choreographers each get one hour to share a work-in-progress and get feedback

\$5 door

<http://danceexchange.org/>

Book of Wishes Workshop with artist Sushmita Mazumdar

Saturday, Jan. 5, 1 p.m.

Art Room – TP Community Center

Learn to make a Book of Wishes, inspired by

the Buddhist Prayer Wheel

Free

www.facebook.com/TakomaParkMD/events

Opening Artists Reception

Friday, Jan. 11, 6 to 8 p.m.

The Galleries at the Community Center

Celebrate the work of artists Alice Shih, Mohamed "Amdy" Adje, Michael Harrington and Thien Nguyen

Free

www.facebook.com/TakomaParkMD/events

Third Thursday Poetry Reading

Thursday, Jan. 17, 7:30 p.m.

TP Community Center Auditorium

JoAnne Grownney, Anne Becker, Virginia Bell and Don Berger

Free

www.facebook.com/TakomaParkMD/events

The 9 Songwriters Series

Wednesday, Jan. 23, 7:30 p.m.

Hear almost 30 songs from nine different artists

TP Community Center Auditorium

\$15 advance / \$18 door, students: \$12 / \$15

<http://www.imtfolk.org/>

Patagonia Winds Concert

Saturday, Jan. 26, 7 p.m.

Seeker's Church, 276 Carroll Street NW

"Music of the Americas" for wind quintet

\$20, includes dessert reception with the artists

Proceeds to benefit KRMEF.org

<http://patagoniawinds.org>

4tet: Brittany Haas, Cleek Schrey, Jordan Tice and Nic Gareiss

Wednesday, Jan. 30, 7:30 p.m.

TP Community Center Auditorium

Young performers join their talents to create contemporary folk music

\$18 advance / \$22 door, students \$14 advance / \$18

<http://www.imtfolk.org/>

HOME: An evening with Jill Sigman

Jan. 31

Dance Exchange, 7117 Maple Ave.

Dance performance and discussion challenging perceptions about the environment

\$10, students and seniors \$5

<http://danceexchange.org/>

EXHIBITS

Alice Shih

The Galleries at the Community Center

Old paintings are reconfigured and repurposed into new compositions

Free

www.facebook.com/TakomaParkMD/events

Mohamed "Amdy" Adje

Colorful paintings inspired by the artist's homeland of Senegal

The Galleries at the Community Center

Free

www.facebook.com/TakomaParkMD/events

Michael Harrington

The Galleries at the Community Center

Paintings exploring runes and Celtic heritage

Free

www.facebook.com/TakomaParkMD/events

Thien Nguyen

The Galleries at the Community Center

Raku Pottery

Free

www.facebook.com/TakomaParkMD/events

PUBLIC MEETINGS / OF NOTE

City Council

Monday, Jan. 7, 7:30 p.m.

Monday, Jan. 14, 7:30 p.m.

Tuesday, Jan. 22, 7:30 p.m.

Monday, Jan. 28, 7:30 p.m.

TPCC Auditorium

For agenda, see www.takomaparkmd.gov/clerk/agendas

Takoma Park Tenant Summit

Saturday, Jan. 26, 10 a.m. – 2 p.m.

TP Community Center

Issues and advocacy for tenants

Free

301-891-7222, lindaw@takomagov.org

Public Hearing, Redistricting

Monday, Jan. 14, 7:30 p.m.

Takoma Park Community Center Auditorium

Residents weigh in on upcoming ward boundaries

See page 1

COMMUNITY ACTIVITIES

Food Truck Fridays

5 – 8 p.m.

Takoma Junction, next to TPSS Co-op, 201 Ethan Allen Ave.

Trohv, 232 Carroll Street, NW

Various food vendors

Takoma Park emergency food pantry

First Saturdays, 11 a.m. – 2 p.m.

Grace United Methodist Church, 7001 New Hampshire Ave.

Bi-weekly and monthly food supplements for needy families

240-450-2092 or educare_ss@yahoo.com

Introducing the K9

New Hampshire Ave-Maryland Line

MetroExtra bus.

Way blue. Way fast. Way fewer stops.

- Fewer stops mean a faster ride. See the map on the right.
- Same price as a regular Metrobus.
- Service begins Monday, December 31.
- Buses serve stops every 15-20 minutes during weekday a.m. and p.m. rush hour.
- For more information, visit wmata.com/bus or call 202-637-7000.

Presentando el autobús

K9 New Hampshire Ave-Maryland Line

MetroExtra.

Camino azul. Muy rápido. Menos paradas.

- Pocas paradas significan un viaje más rápido.
- El mismo precio que un Metrobus regular.
- El servicio comienza el lunes 31 de diciembre.
- Los autobuses sirven las paradas cada 15-20 minutos durante la hora pico a.m. y p.m. durante los días laborales.
- Para obtener más información, visite wmata.com/bus o llame al 202-637-7000.