

November
2015



WHAT'S NEW?

Pull-Out Election Section This Issue

Candidate profiles,
Election Day details

Suplemento separable de Información Electoral Este tema

Información de los candidatos,
Información detallada sobre el
Día de la Elección

City offices closed

Nov. 11, 28, 29

Veteran's Day and Thanksgiving

Trash holiday

No yard waste collection Monday, Nov. 11

Thursday, Nov. 28 trash pickup on

Wednesday, Nov. 27

Friday, Nov. 29 trash pickup

on Saturday, Nov. 30

TAKOMA PARK

A newsletter published by the City of Takoma Park, Maryland

Volume 54, No. 11 ■ takomaparkmd.gov



Norman Ridgeway and Eleanor Williamson-Taylor

Photo by Selena Malott

Long live the linked community

By Patti Mallin

On a Thursday afternoon last month, Karen Maricheau, director of Takoma Park's Lifelong Takoma program and all-around Pied Piper, leads twenty-some middle and high school students and a handful of adults merrily through the computer center rotunda. Pointing to the left and right, she indicates where workshops will be held, where lunch will be displayed. She asks, "Who are my food service volunteers?" This is the second orientation Maricheau has led for the more than 50 volunteers who will assist her in running the 2nd Annual Lifelong Takoma Day.

In the year since the first event, Maricheau has tracked the needs of Takoma Park residents who contact her directly and gathered similar information from local agencies, churches, and other com-

munity partners. She and her planning committee built the agenda for this year's program based on input from these groups.

The theme of "one community – engaged and inclusive" grew from a sense of disconnect and isolation that many aging residents reported. One person expressed it this way, "There are two Takoma Parks, one for the young and one for the old."

However, young and old came together on this day. Community partners and service providers lined the front walk to the Community Center, ready to introduce themselves to Takoma Park residents. Mary Murphy, program director at SeniorConnection, explained the free transportation service available to eligible seniors. At the same time, she recruited

COMMUNITY □ Page 3

"This Old House" Can Get You a Tax Credit

By Bob Guldin

If you own a home in the historic preservation district of Takoma Park, and you have exterior work done on the house, you may be eligible for a sizeable tax credit from Montgomery County or the State of Maryland or maybe even both.

What's more, Montgomery County in 2013 boosted the size of the tax credit it offers. For many years, you could get a credit of 10 percent of the amount you had spent. That has now increased to 25 percent. For example, if you spend \$4,000 for a new roof this year, the county can reduce your 2016 tax bill by 25 percent of that or \$1,000.

The idea behind these tax benefits is to encourage homeowners and commercial property owners to keep older buildings in good repair and to preserve the character of older neighborhoods.



Credit: MontgomeryPlanning.org

The garage at 316 Tulip Ave. is a distinctive sight in the Takoma Park Historic District, and in 2007 owners Kurt Lawson and Jill Feasley decided to restore the structure.

A considerable portion of Takoma Park falls within the historic district. That includes most of North Takoma, the Old Takoma/PEN neighborhood, and the WACO or Westmoreland neighborhood, as well as a long strip of Carroll Avenue that reaches from Laurel Avenue to Sligo Creek Park.

To get a precise reading of what is included in our historic district (and other historic districts in the county), go to www.montgomeryplanning.org/gis/interactive/historic.shtm. You'll find an interactive map that shows both the county and state historic districts. These overlap but are not exactly the same. On the map, you'll see the county historic dis-

TAX CREDIT □ Page 3



Everyone Counts!

Municipal Elections
on Tuesday,
November 3, 2015

For candidate profiles, Election Day details and other important information, see the special section in this issue beginning on p. 7.

Para información sobre los candidatos, el día de la elección y otra información importante vea la sección especial comenzando con la página 7.

Inside



Leaf Collection
Program

Page 4



Green Challenge
Case Study

Page 13



Year of the
International Novel

Page 14

ECRWSS POSTAL CUSTOMER

Mayor & Council
7500 Maple Ave.
Takoma Park, MD 20912

PRE-SORT STANDARD
U.S. POSTAGE
PAID
TAKOMA PARK, MD
PERMIT NO. 4422

DOCKET

City Council & Committee Calendar

OFFICIAL CITY GOVERNMENT MEETINGS
TPCC: Takoma Park Community Center

CITY COUNCIL
Thursday, Oct. 29, 7:30 p.m.
Wednesday, Nov. 4, 7:30 p.m. (to hear the certification of election results only)
Monday, Nov. 9, 7:30 p.m.
Monday, Nov. 16, 7:30 p.m. (swearing in of the new City Council)
Monday, Nov. 23, 7:00 p.m.
Monday, Nov. 30, 7:30 p.m. (tentative)
Meetings take place in the TPCC Auditorium, unless noted otherwise. *When public hearings or presentations are scheduled, meetings may begin at 7 p.m. Detailed agendas are always available for review online: <http://www.takomaparkmd.gov/citycouncil/agendas>.

BOARD OF ELECTIONS
Date TBA
TPCC Room TBA

COMMEMORATION COMMISSION
Date TBA
TPCC Room TBA

COMMITTEE ON THE ENVIRONMENT
Tuesday, November 10, 7:15 p.m.
TPCC Lilac Room

EMERGENCY PREPAREDNESS COMMITTEE
Date TBA
TPCC Room TBA

ADVISORY BOARD
Tuesday, Nov. 10, 6:30 p.m.
TPCC Hydrangea Room

RECREATION COMMITTEE
Thursday, Nov. 19, 7 p.m.
TPCC Hydrangea Room

SAFE ROADWAYS COMMITTEE
Monday, Nov. 16, 7:30 p.m.
TPCC Hydrangea Room

TREE COMMISSION
Tuesday, Nov. 10, 6:30 p.m.
TPCC Rose Room

*All meetings are open to the public unless noted otherwise. Additional meetings may be scheduled after the *Takoma Park Newsletter* deadline. For the most up to date information, check <http://www.takomaparkmd.gov/calendar>. Most meetings are held in the Takoma Park Community Center – Sam Abbott Citizens’ Center, 7500 Maple Avenue (TPCC). Individuals interested in receiving a weekly Council agenda and calendar update by e-mail should contact the City Clerk at 301-891-7267 or clerk@takomaparkmd.gov.

NOTICE ON ADA COMPLIANCE
The City of Takoma Park is committed to ensuring that individuals with disabilities are able to fully participate in public meetings. Anyone planning to attend a City of Takoma Park public meeting or public hearing, and who wishes to receive auxiliary aids, services or accommodations is invited to contact Emily Cohen, at 301-891-7266 or EmilyC@takomaparkmd.gov at least 48 hours in advance.

City Council Action

All actions take place in scheduled legislative meetings of the City Council. Only negative votes and abstentions/recusals are noted. Adopted legislation is available for review online at www.takomaparkmd.gov. For additional information, contact the city clerk at jessiec@takomaparkmd.gov.

ORDINANCE 2015-44
Adopted Sept. 28, 2015 (First reading September 15)
Nov. 3, 2015 City Election and Nominating Caucus
Sets forth details of the election including order of nominations at the nominating caucus, days and hours of early voting, use of paper ballots, and payment for election judges.

ORDINANCE 2015-45
Adopted Sept. 15, 2015
F-450 Dump Trucks
Authorizes purchase of two replacement dump trucks from Academy Ford in the amount of \$58,937 each.

ORDINANCE 2015-46
Adopted Sept. 15, 2015
Finance Office Furniture
Authorizes a contract with Douron, Inc. for refurbishing of the renovated Finance Office.

ORDINANCE 2015-47
Adopted Sept. 15, 2015
Portable Video Equipment
Authorizes purchase of a Comrex LiveShot Video IP Codec and LiveShot Studio Video IP Codec to enable live video and audio transmission from remote locations. The purchase amount is \$13,500 from CEI Sales, LLC.

ORDINANCE 2015-48
Adopted Sept. 15, 2015
Newsletter Editor
Authorizes execution of a contract for editing the Takoma Park Newsletter to Apryl Motley.

ORDINANCE 2015-50
Adopted Sept. 28, 2015
Flower Avenue Amenities
Authorizes a contract with Victor Stanley Inc. for trash and recycling containers and benches for Flower Avenue. The contract amount is \$28,284.

RESOLUTION 2015-49
Adopted Sept. 15, 2015
Mont. Co. Cable Communications Advisory Committee
Appoints Michael W. Richards (Ward 1) as the City’s representative to the Montgomery County Cable and Communications Advisory Committee.

RESOLUTION 2015-50
Adopted Sept. 15, 2015
Arts and Humanities Commission
Appoints Kevin Adler (Ward 2) to the Arts and Humanities Commission.

RESOLUTION 2015-51
Adopted Sept. 15, 2015
Safe Roadways Committee
Appoints Frank Demarais (Ward 5) and Michael Moore (Ward 6) to serve on the Safe Roadways Committee.

RESOLUTION 2015-52

Adopted Sept. 15, 2015
Finance Director Yovonda Brooks
Expresses appreciation to Yovonda D. Brooks for service as Takoma Park Finance Director from 2005 to 2015.

RESOLUTION 2015-53
Adopted Sept. 28, 2015
6513 Orchard Avenue
Recommends approval of the proposed site plan for 6413 Orchard Avenue, supports a certain design for the western facade of the building, and recommends that the parking waiver not be granted.

RESOLUTION 2015-54
Adopted Sept. 28, 2015
Advisory Question
Places an advisory referendum question on the City election ballot asking voters whether regular City elections should be changed from odd-numbered years to even-numbered years to coincide with Maryland statewide general elections. (VOTING NO: Mayor Williams, Councilmember Smith and Councilmember Schultz).

RESOLUTION 2015-55
Adopted Sept. 28, 2015
Tree Commission
Reappoints Carol Hotton (Ward 3) to the Tree Commission.

RESOLUTION 2015-56
Adopted Sept. 28, 2015
Ethics Commission
Reappoints Ellen Maidman-Tanner (Ward 2) to the Ethics Commission.

VACANCIES ON CITY BOARDS, COMMISSIONS AND COMMITTEES

Interested in serving? A great first step is to review information on the website and attend a meeting to learn more about the work of the group. Committee information and meeting dates/times may be found on the calendar at www.takomaparkmd.gov.

Appointments are made by the City Council. Apply by completing an application form and submit it along with a resume or statement of qualifications to the city clerk. For complete information or to apply, view the City’s website. For questions, contact Jessie Carpenter, city clerk at 301-891-7267 or jessiec@takomaparkmd.gov or contact your City Council representative.

The following groups have vacancies as of October 12:	represented)	(two vacancies – no representatives from Wards 2, 4, 5, or 6)
Arts and Humanities Commission (four vacancies – no representatives from Ward 4)	Committee on the Environment (three vacancies – no representatives from Ward 5)	Personnel Appeal Board (one vacancy – Wards 2, 3, 4, 5, and 6 not represented)
Commission on Landlord-Tenant Affairs (one vacancy – no representatives from Ward 6)	Emergency Preparedness Committee (one vacancy – no representatives from Wards 4, 5, or 6)	Recreation Committee (three vacancies – no representatives from Ward 4)
Commemoration Commission (four vacancies – Wards 3, 4, and 5 are not yet	Ethics Commission (two vacancies – no representatives from Wards 3 or 5)	Safe Roadways Committee (three vacancies – no representation from Ward 4)
	Nuclear-Free Takoma Park Committee	Tree Commission (one vacancy)



Hindu Temple of Metropolitan Washington, 7505 New Hampshire Ave.

Diwali Mela (Festival)

The Takoma/Langley Crossroads Development Authority (CDA) has partnered with the Hindu Temple of Metropolitan Washington and City of Takoma Park to sponsor a November 8 celebration of Diwali, the Hindu festival of lights, which coincides with the Hindu New Year. Diwali celebrates new beginnings, the triumph of good over evil and light over darkness.

The Diwali Mela will be held outdoors at 7505 New Hampshire Ave. from 2 to 7 p.m. on Sunday, Nov. 8. Musicians will perform on a stage with traditional instruments, and dancers will present traditional Indian dances. Numerous vendors will set up stalls selling Indian clothing, jewelry, housewares, henna tattoos, snacks and sweets. CDA member Ram Agarwal, who is Secretary of the Hindu

Temple, volunteered to secure performers and vendors for the festival, and persuaded the Hindu Temple to co-sponsor the event. Ram's Fast Tax Service has been in operation at 7487 New Hampshire Ave. for many years.

Numerous City-sponsored events are held every year in Old Takoma or the Takoma Park Community Center. The Diwali Festival is a new sponsorship that will attract residents to an area of the City unfamiliar to many. The Takoma/Langley Crossroads area is very international with a mix of retail and service businesses and professionals. Both "mom and pop" businesses and chains co-exist in a safe, stable area with a diverse population. Long associated with Latinos, today's Crossroads includes Africans from Nigeria, Ghana, Cameroon, and Senegal, Caribbean na-



tives, African-Americans, South Asians, Chinese, Koreans, and persons from the Middle East. For more information about the Diwali Mela, call 301-445-7910.

COMMUNITY

■ From page 1

others, including a young mother with an infant, as volunteers to help drive seniors to the grocery store and to medical appointments.

Right across the walkway, Michelle Dudley reminded visitors about the innovative FreshChecks program at the Crossroads Community Food Network, which helps put fresh fruits and vegetables into the shopping bags of senior citizens and low-income shoppers at the farmers market.

Participants in the financial fitness workshop, facilitated by Kristin Rodriguez, were concerned primarily about debt management. Rodriguez guided them through a decision-making process resulting in a personal plan for taking control of their debt, meeting a workshop



Johnny Browning gets postural stability testing

Photo by Selena Malott

goal of putting people in the driver's seat where their finances are concerned.

The Housing Opportunities Commission of Montgomery County taught attendees how to register for affordable housing through the new online portal. While some were there to explore opportunities for themselves, others looked for opportunities for their adult children living with disabilities.

The social center of the day was the rounda area outside the senior room and the public computer center. Lunch, and then snacks, were served there by a dedicated (and exceedingly busy) group of volunteers under the capable management of Joyce Seamens. Her team included veteran volunteer Gladys Harvey, also a member of the Lifelong Takoma planning committee, Montgomery College students

COMMUNITY □ Page 13

TAX CREDIT

■ From page 1

strict in red and the state historic district marked with purple crosshatching. Zoom in or use the search window to find a specific property.

Here's how the county credit works (and this writer has actually received these credits, so we know they're real). The county credit is for exterior work only, like painting, repair or restoration,

e.g., putting in new windows that look similar to your old windows. Remodeling work, like rebuilding a porch or a fence, *may* be eligible for the tax credit if you get a Historic Area Work Permit from the county before getting the remodeling done. The work must cost at least \$1,000 in a calendar year, and you must have before and after photos and receipts or canceled checks from a licensed contractor.

You should apply to the county by April 1, 2016 for work done in 2015 to get your

tax credit on time. According to Kevin Manarolla, a staffer with the Montgomery County Office of Historic Preservation, the county will generally consider applications for the previous two years.

The Maryland Tax Credit

The Maryland State homeowner tax credit — a separate program from the county one — can cover as much as 20 percent of your costs. It is possible to combine county and state credits. Add those together and you could get an impressive 45 percent reimbursement for your out-of-pocket expenses.

For the state program, the owner must spend at least \$5,000 on eligible work in a 24-month period. There's also a \$50,000 cap on how big a tax credit can be.

The state program, run by the Maryland Historical Trust, differs from the county's in several ways. For instance, to get a state credit, you *must* get a Historic Area Work Permit (i.e., prior approval) before work begins. The state also covers both exterior and interior work, such as refinishing floors or HVAC.

Collin Ingraham, the administrator of the state program, indicated that the first

step a property-owner should take is to make sure their home is eligible for the state tax break. "Each historic designation is different," he said. Another complicating factor: A property may be eligible for a state tax credit even if it is not in a historic district if the building itself contributes to the historic character of the neighborhood.

The state and county also differ in how they make the tax credit money available. Montgomery County subtracts it from the property tax you owe. The state applies the credit to your next income tax return.

Clearly, anyone who hopes to get a state tax credit should contact the Maryland Historic Trust (410-514-7600) very early in the process. You can find a useful fact sheet at http://mht.maryland.gov/taxcredits_homeowner.shtml.

Lorraine Pearsall, the vice president of Historic Takoma, urges residents, "Don't be afraid to use the state tax credit, even though there are three forms and it makes people go cross-eyed." She says her organization is ready, willing and able to help neighbors navigate the process and obtain the historic tax credits. Pearsall can be reached at info@historictakoma.org.



THE TAKOMA PARK NEWSLETTER

Editor: Apryl Motley
Assistant: Sean Gossard
www.takomaparkmd.gov
Vol. 54, No. 11

The Takoma Park Newsletter is published 12 times a year as the official publication of the City of Takoma Park, takomaparkmd.gov. Letters to the editor, reports by community groups, calendar items and other submissions will be considered for publication; send to tpnewseditor@takomaparkmd.gov

takomaparkmd.gov or Newsletter, City of Takoma Park, 7500 Maple Ave., Takoma Park, Md. 20912.

Name, address and telephone number must accompany all submitted material. Editor reserves the right to edit for length, clarity, style, spelling and grammar.

Published material containing opinions does not necessarily reflect the views of the Newsletter or the City of Takoma Park.

The Newsletter does not accept commercial, classified or political advertisements.

The Newsletter is printed on recycled-content paper.





BUILDING COMMUNITY



COLTA'S CORNER

Fina v. Gray, Case Number 2014-11T

Jean Kerr, Housing Specialist

On July 10, COLTA issued a decision in a case brought by a tenant who alleged that the landlord charged her rent in excess of the amount allowed under the City's Rent Stabilization Ordinance. The tenant also alleged that the landlord did not provide her with a signed written lease for the apartment and charged her for utilities that were not for her own usage. The tenant further alleged that the landlord attempted to charge her an illegal fee for use of the laundry room, which was supposed to be included in the rent.

The tenant requested that the landlord: (1) refund the illegal rent collected along with the utility charges that were not for her own usage; (2) provide a signed written lease; (3) be prohibited from identifying her unit as Apartment 3-4 on the lease and (4) imposing a fee for the tenant's past use of the laundry room; and (5) be required to separately calculate the monthly rent and utility charges for the apartment and provide documentation of the utility expenses.

COLTA granted the relief requested by the tenant in part, stating that the (1) landlord shall allow the tenant to use the laundry room at the property without charge during her tenancy, and pay \$292 to the tenant for illegal rents collected.

(2) COLTA further ruled that the landlord provide the tenant with an executed written lease that properly identifies the unit as Apartment 3, authorizes the tenant to use the laundry room without charge, states the legal rent and accurately states the material

terms of the tenancy. (3) Additionally, COLTA ruled that the landlord should cease identifying Apartment 3 as Apartment 3-4 and shall not charge the tenant for utilities without providing the tenant with a copy of the pertinent utility company bills along with an explanation of the calculation of the tenant's share.

(4) Finally, COLTA did rule that the tenant failed to provide sufficient evidence to show that the landlord had charged her for utilities that she did not use in the past year. COLTA ordered compliance within 15 days of the decision.

John v. AJO Realty, Case Number 15-3T

**Moses A. Wilds Jr.,
Landlord-Tenant Mediator**

On Sept. 28, COLTA issued its decision on a tenant's complaint that a contractor hired by the landlord failed to leave a report of entry and that during the entry, a gold necklace was stolen from her apartment dresser. The tenant sought the return of the necklace or compensation for its value, which a jeweler estimated to be \$2,167.

Following the July 2015 hearing, COLTA ruled, based on the testimony and records presented at the hearing, that: (1) the landlord failed to leave a report of entry after its agents entered the tenant's apartment in violation of section 6.16.110(C) of the city code but that there was (2) insufficient evidence to attribute the theft of the tenant's necklace to the landlord's failure to leave a report of entry. The commission's decision additionally noted that because the landlord provided the tenant with a prior notice of entry, the tenant had an opportunity to secure her valuables, request that the landlord postpone the work in her apartment or make arrangements to have someone stay in the apartment during the entry.

Fall leaf collection program

Loose leaf collection will be provided by the City from Nov. 16 through Dec. 18. Residents can rake leaves to the curb at their convenience during the five-week period. Most streets do not have an assigned collection day. The goal of the program is to collect leaf piles within two weeks of their appearance at the curb. Leaf collection is dependent on the weather and rain, or freezing conditions can slow collection.

There are five streets that receive collection days on scheduled days. These streets are State Highway routes and have a heavy volume of traffic.

- Carroll Avenue, from 7000 to 7800 block
- Ethan Allen Avenue
- Philadelphia Avenue

Collection for these streets will take place Saturday, Nov. 21 and Monday, Dec. 21.

- Piney Branch Road
- Flower Avenue, from 7900 to 8600 block

Collection for these streets will take place Monday, Nov. 23 and Saturday, Dec. 12.

There will be no collection on the Thanksgiving holiday, which is observed on Thursday and Friday, Nov. 26 and 27. Also, on the dates of collection for the posted streets, no other streets will receive collection (November 21, 23 and December 12, 21).

During the first three weeks of collection, the crews will concentrate on picking up large piles of leaves. During the last two weeks, the crews will thoroughly collect all remaining loose leaves from the gutter and grassy strip along the curb.

The Public Works Department welcomes your comments and suggestions about the service we provide. You can also call the leaf collection hotline at 301-891-7626 to notify us when your leaves have been raked out. Our goal is to collect leaf piles reported on the hotline within 10 days of the call.



Please follow these guidelines:

1. Rake leaves into a pile at the edge of the curb. Do not rake leaves into the street. Leaf piles can create traffic hazards.
2. Do not park your car in front of a leaf pile, and when raking please avoid piling leaves where cars are likely to park.
3. The vacuum leaf collection is for leaves only. Do not include branches, brush, vines, rocks or debris. These items can seriously damage equipment and delay collection.
4. Do not pile leaves near storm drain inlets. Leaves can block the drains and cause flooding problems.

The City also provides weekly Monday collection for bagged grass, leaves, branches and brush all year long. The Monday collection requires leaves and loose yard materials to be in paper bags, trash cans or stiff-sided containers. Plastic bags cannot be used for yard material because these items are composted, and the plastic interferes with the composting process. Branches must be less than four feet long and less than three inches in diameter and tied into small bundles or stacked in a trash can. The Monday yard waste collection is cancelled when a holiday is observed on Monday.

Renewing your rental license

By Code Enforcement Staff

On or before Nov. 30, information will be sent out to all Takoma Park landlords informing them that they must apply for the renewal of their rental housing licenses. All applications must be submitted online as the City no longer accepts paper copies of the application for renewals. E-mail addresses are also now required by code.

If you own a rental housing property

or unit in Takoma Park, you are required to obtain a rental housing license. There are five requirements that must be satisfied before the City will renew your rental license. You must 1) complete the online application, 2) pay the license fee (charged per unit), 3) maintain a valid Landlord certification, 4) must meet the lead risk requirements for the Maryland Department of Environment (MDE), and 5) successfully pass a property maintenance code inspection. Licenses are is-

sued for the calendar year and only after all requirements have been met.

If your landlord certification has expired, we offer a class every other month at the community center that introduces and briefly reviews the requirements and laws that apply to rental housing in Takoma Park. The classes are held the third Wednesday of every other month on alternating mornings and evenings in the auditorium. If you plan on attending, please call 301-891-7255 to register for the class. A schedule can be found on the City's website.

New in 2015 is a change in the MDE

requirements from a construction date of 1950 to 1978. Additional information is available online www.MDE.state.md.us/ lead or by contacting the MDE at 800-633-6101 x4199 or 410-537-4199.

Why be licensed? If your property is not licensed, neither the tenants nor the landlords are protected by Takoma Park's laws governing rental properties. This is especially important in dealing with health and safety issues, repairs, security deposits and issues with leases and rents. Please ensure that your rental property is licensed so that the rights of all parties involved are ensured.



THE ARTS

“Rain.” Print by artist Jane Silver.

Mindscapes Exhibit Opening

Thursday, Nov. 5, 7:30 - 9 p.m.
The Takoma Park Community Center Auditorium
7500 Maple Ave

For artists Suren Gevorgyan, Ida Miggins, Jane Silver, Atousa Rassiyan and Sharon “Wren” Rogers, the world does not exist in its various landscapes. It exists in the contrasting hues and shapes that

they perceive.

Their art for Mindscapes, the latest exhibit at the Takoma Park Community Center, reflects these creative perspectives. The exhibit opens on Nov. 5 with a reception from 6:30 to 8 p.m. in the center’s Atrium Gallery, 7500 Maple Avenue.

Painters Gevorgyan and Rogers both work in abstraction. While Gevorgyan focuses on layering color, Rogers, who has strabismus, explores the concept of dimension with shapes. Gevorgyan and Rogers will show their work in the Atrium Gallery and Gallery 3 at the community

center, respectively.

“Abstractionism’s appeal to me is the near or complete absence of a subject, which allows a viewer to be free in the associative perception and to be a participant in the creative process,” Gevorgyan wrote in his artist statement.

Silver and Rassiyan subvert expectations of traditional landscapes. Silver digitizes silk and watercolor paintings and makes large-scale prints, and Rassiyan digitally alters and then layers photographs of nature. Silver will show a print in the Suspended Space, and Rassiyan

will show her pieces in the Dempsey Gallery at the community center.

In the Corridor display cases adjacent to the Takoma Park Maryland Library, Miggins will show her glass art.

“My vision foretold a time when everyone would see the world through the shapes and contours of glass,” wrote Miggins in her artist statement. “There is a soft, inviting depth in glass that draws you into its curvatures and crevices.”

The exhibit will be open through Jan. 3, 2016.

BDSM: Sex, Hobby, Religion, or Art?

Thursday, Nov. 5, 7:30 – 9 p.m.
The Takoma Park Community Center Auditorium
7500 Maple Ave.

In the Takoma Park Community Center Auditorium, Dr. Julie Fennell wears black hot pants and rainbow knee socks. The Gallaudet University sociology professor stretches and prepares to do something most PhDs wouldn’t dream of: a Shibari bondage performance.

This performance for City TV is a preview of Fennell’s lecture *BDSM: Sex, Hobby, Religion, or Art?* While her performance is sexually-charged, artful and ceremonial, Fennell’s lecture will give an academic analysis of the burgeoning BDSM sub-culture.

BDSM (Bondage and Discipline, Dominance and Submission, Sadism and Masochism), or simply “kink,” is not widely-understood beyond its representation in

50 Shades of Grey. Fennell’s lecture will debunk misconceptions and offer a more nuanced definition of BDSM. A bondage demonstration will precede the lecture, and there is a suggested \$10 donation.

The Greek Nubian Collective

Saturday, Nov. 21, 7:30 – 9 p.m.
The Takoma Park Community Center Auditorium
7500 Maple Ave.

Most people can pick a lyre or a tambourine out of musical line-up, but what about a kanun? Or a pandura? Or an oud? Knowledge of Greek and Sudanese instruments may not be common in Maryland, but The Greek Nubian Collective is here to remedy that.

The Greek Nubian Collective, comprised of Greek native Spyros Koliavsilis, Sudanese-Nubian artist Mosno Al-Moseeki, vocalist Sahffi Lynne, and percussionist Jonathan Fell, perform new



The Greek Nubian Collective at Artscape 2013 (Baltimore)

arrangements of folk songs from Greece and Nubia. The foursome use modern and traditional instruments to play songs that appeal to current musical tastes while still

reflecting the musical history of Greece and Nubia. The Greek Nubian Collective will perform at the community center on Nov. 21 at 7:30 p.m.

RECREATION



Jaylene Sarracino

The Recreation Center is Open for 55+

Since starting in September of 2014, the new “active” program for adults 55 plus at the Recreation Center on New Hampshire Avenue has proven to be a success with residents. In just one year, most classes are filled to capacity. With a focus on fitness, the Tuesday/Thursday noon – 2 p.m. scheduled class offerings, such as Tennis Fun and Fitness and Table Tennis (Ping Pong) Skills, have continued to attract participants.

Instructor Jaylene Sarracino’s Full Body Fusion class, a low-impact, full-body workout to music with elements of weight training and yoga, continues to grow in popularity every session. In addition, the Senior Fitness Pass offers adults 55 and older free access to the Fitness Room during all regularly scheduled building hours, and residents who visit on a regular basis enthusiastically welcome it. The future looks active and fun for seniors at the Recreation Center.

YOUTH

ART

MAKE/Shift Studio II - Drawing & Watercolor Ages 11 – 14

Have fun learning to draw with black, white and colored drawing materials, paint with watercolors, use pen and ink and explore mixed-media approaches to representational imagery. Subjects will include still life, portrait, landscape (weather permitting) and floral studies. Beginning students welcome. The focus of the class is appropriate for students interested in developing a portfolio for entry into the Visual Art Center at Albert Einstein High School.

TP Community Center Art Studio
Tuesdays, Nov. 10 – Dec. 15, 3:30 – 5:30 p.m.
TP residents \$145
Non-residents \$165

EXTENDED CARE

After the Bell Ages kindergarten – fifth grade

After School Program at the Takoma Park Recreation Center. Transportation is not provided to this program, but you can contact the MCPS Transportation department and have them change your child’s bus route to the New Hampshire Towers behind the Recreation Center and staff will meet them at the bus stop and walk them over each day for after care. Enjoy indoor and outdoor activities after school. Homework and study time will be provided each day.

TP Recreation Center
Monday – Friday, 3:30 – 6:30 p.m. (On-going/
School Year)
\$125 per month for the year

DRAMA/THEATER

Dungeons and Dragons

Ages 9 – 18

Use your imagination and storytelling ability in this classic fantasy role playing game. Roll dice to cast spells and battle monsters. Creativity and cooperation help the group “survive.”

TP Community Center auditorium
Thursdays, Nov. 12 – Dec. 17, 4 – 6 p.m.
TP residents \$55
Non-residents \$65

SPORTS/FITNESS/HEALTH

Basketball Skills Clinic

Ages 5 – 12

Basketball Skills program for boys and girls who will have fun and learn the fundamentals of basketball. Skills such as dribbling, passing, shooting and teamwork will be the main focus for this clinic. All skill levels are welcome. Emphasizing individual improvement is one of the guiding philosophies of this skills clinic. Participants will be provided with excellent coaching, which allows each person to develop a sense of pride and individual accomplishment.

TP Recreation Center
Saturdays, Nov. 7 – Dec. 19, 10:30 – 11:30 a.m.
\$60/6 weeks

2016 Futsal League Ages 7 – 10

Futsal, a sport that is similar to soccer, offers the perfect combination of learning and fun. It is designed to improve fundamental technique and skill development during the winter months. Please note that program registration is first come first serve and space is limited to 60 participants. Parents are encouraged to participate. If interested in becoming a coach, please contact Lew McAllister at lewm@takomaparkmd.gov.

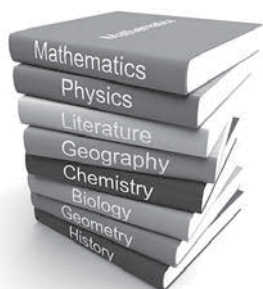
TP Recreation Center
Sundays, Jan. 10 – Feb. 28 (times may vary)
\$60

Homework Power Hour

Take advantage of our homework power hour focusing on academic support. Staff is available to assist and review assignments.

Teens Ages 13 – 17
Tuesdays, ongoing
4 – 5 p.m.

FREE



2016 Winter Basketball League Kindergarten – eighth grade

The Winter Basketball League is a non-competitive, developmental, community league. Program goals are to introduce boys and girls to the fundamentals of basketball. Volunteer coaches are needed, training is provided. Practice and game times will vary. If interested in becoming a coach, please contact Lew McAllister at lewm@takomaparkmd.gov.

Local Schools
Saturdays, Jan. 16 – March 12
(times may vary)
TP residents \$70
Non-residents \$80

ADULTS

ART

Collage

Ages 16 and older

Have fun working with found, purchased and altered papers, while learning how collage methods can enhance your art making process, whatever medium you use. This class explores ways of combining collage materials and art media. You will be introduced to a variety of collage techniques, work with elements and principals of design, and explore creative 2- and 3-D assembly. Instruction will be given in surface preparation, adhesives, color theory and composition and is suitable for levels.

TP Community Center Art Studio
Tuesdays, Nov. 10 – Dec. 15,
11:15 a.m. – 2:15 p.m.
TP residents \$210
Non-residents \$240

SPORTS/FITNESS/HEALTH

Boom! Body Boot Camp

Ages 18 and older

Boom! Body Boot Camp is a high-energy, fun-filled class with great music that targets the whole body with HIIT routines that includes weight training. If you are looking to get in the best shape of your life, this hour packed class is for you.

TP Community Center, Dance Studio
Wednesdays, Nov. 14 – Dec. 7, 6 – 7 p.m.;
Saturdays, 9 – 10 a.m.
TP residents \$100
Non-residents \$120
Drop in \$15



S'Mores S'Monday

Join us for S'mores,
hot chocolate and a movie!

Teens Ages 13 – 17
2nd Monday of the month
4 – 7 p.m.

FREE

FOREVER YOUNG: 55 PLUS

DROP IN

Bingo

Ages 55 and older

Try your luck. Win a prize.
TP Community Center Senior Room
Thursday, Nov. 19, noon – 2 p.m.
Free

Blood Pressure Screening

Ages 55 and older

Adventist Healthcare will be doing a free monthly blood pressure screening.

TP Community Center Senior Room
Thursday, Nov. 19, 11:30 a.m. – 12:30 p.m.
Free

SPORTS/FITNESS/HEALTH

Senior Free Fitness Pass

Ages 55 and older

This is a pass that is offered at the Takoma Park Recreation Center for seniors 55 and over who would like to use the fitness center. Registration is open. You can register today at the Recreation Center on New Hampshire Avenue or the Community Center on Maple Avenue.

City of Takoma Park Election Information

Compiled by Jessie Carpenter, City Clerk

What's on the ballot?

- Vote for mayor
- Vote for your city councilmember
- Vote on the advisory question regarding changing the date of city elections

All ballots will have the contest for mayor and the advisory question. Voters from each ward will vote for a councilmember for that ward.

¿Qué hay en la boleta?

- Voto por el alcalde
- Voto por un miembro del consejo de su distrito electoral
- Voto sobre la pregunta consultiva en relación con el cambio de la fecha de



elecciones de la ciudad

Todas las boletas contendrán el voto por el alcalde la pregunta consultiva. Los votantes de cada distrito votarán por un miembro del consejo de ese distrito.

Problems getting to the polls?

The Board of Elections will work to accommodate your special needs:

1. Check voting hours and locations. There are a number of options for voting. All locations are accessible.
2. On Tuesday, Nov. 3, the Recreation Bus will provide a free ride to the polls for seniors. The service will be available from 9:00 a.m. to 3:00 p.m. The bus will make continuous loops between the following buildings and the Community Center (approximately every 30 minutes): Victory Tower, Franklin Apartments, Essex House, Maple View Apartments, and the Takoma Park Recreation Center (7315 New Hampshire Avenue). For additional information, contact Paula Lisowski at 301-891-7280 or PaulaL@takomaparkmd.gov.
3. If you arrive at the polling place and cannot get out of your car, we can pro-



vide curbside voting. You will need to call in advance: 240-723-0437.

4. Emergency absentee ballots can be arranged for a homebound voter. Call Jessie Carpenter at 301-891-7267 or email her at jessiec@takomaparkmd.gov for further information about emergency absentee ballots and curbside voting.

¿Problemas para llegar a las urnas? La Junta Electoral intentará satisfacer sus necesidades especiales:

1. Compruebe las horas y los lugares de voto. Hay una serie de opciones para votar. Todas las ubicaciones son accesibles.
2. El 3 de noviembre, el Bus de la Ciudad para Personas Mayores hará varias carreras el 3 de noviembre, entre Victory Tower, los Apartamentos Franklin, y el Centro Comunitario. El horario es: Para asistir al las personas mayores con necesidades especiales, el bus de la Ciudad hará varias carreras (aproximadamente cada 30 minutos) al lugar de votación en el Centro Comunitario de Takoma Park el 3 de noviembre entre Victory Tower, los Apartamentos Franklin, Essex House, los apartamentos Maple View y el Centro de Recreación (7315 New

Hampshire Avenue). Para más información por favor póngase en contacto con Paula Lisowski al 301-891-7280 o PaulaL@takomaparkmd.gov.

3. Si usted llega al lugar de voto y no puede salir de su coche, le podemos ofrecer votación en la acera. Usted tendrá que llamar con antelación al: 240-723-0437.
4. Las boletas de voto ausente de emergencia se pueden organizar para un votante que no puede salir de su casa. Llame a Jessie Carpenter al 301-891-7267 o por correo electrónico a JessieC@takomaparkmd.gov para obtener más información acerca de las boletas de voto ausente de emergencia y votación en la acera.

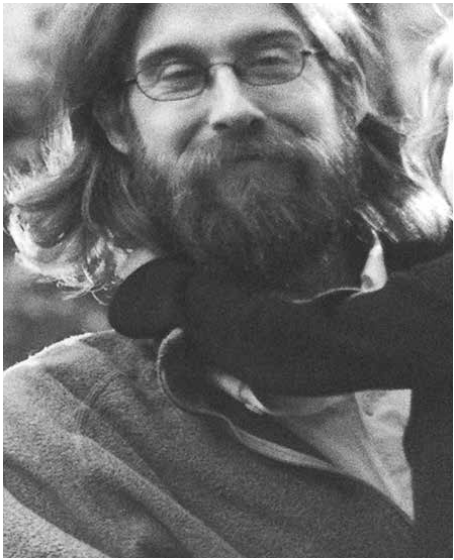
VOTE

SPECIAL PULL-OUT SECTION

Takoma Park

CITY ELECTION / ELECCIÓN MUNICIPAL		
Voting Hours & Locations Horario de Votación Temprana		
Date/Fecha	Time/Hora	Location/Local
EARLY VOTING/ VOTACIÓN TEMPRANA		
Wednesday, October 28 miércoles, 28 de octubre	2:00 pm – 8:00 pm	Takoma Park Community Center 7500 Maple Avenue
Thursday, October 29 jueves 29 de octubre	2:00 pm – 8:00 pm	Takoma Park Community Center 7500 Maple Avenue
Friday, October 30 viernes 30 de octubre	2:00 pm – 8:00 pm	New Hampshire Avenue Recreation Center, 7315 New Hampshire Avenue
Saturday, October 31 sábado 31 de octubre	10:00 am – 4:00 pm	Sligo Creek Park at Sligo Creek Parkway and Kennebec Avenue
Sunday, November 1 domingo 1 de noviembre	12:00 pm – 6:00 pm	Takoma Park Community Center 7500 Maple Avenue
ELECTION DAY VOTING/ DÍA DE LAS ELECCIONES		
Tuesday, November 3 martes, 3 de noviembre	7:00 am – 8:00 pm	Takoma Park Community Center 7500 Maple Avenue

CANDIDATES FOR MAYOR



WARREN HOLMES

Tomorrow is today. Every second is one less you have here on earth to make a difference. Seize this chance... Seize this opportunity... Show the world and our children that we truly practice what we

preach here in Takoma Park.

If Elected I will:

- Lower residential property taxes by reducing the city budget and expanding our tax base through smart development in Old Town.
- Make Takoma Park a small business incubator.
- Make ballot referendums binding
- Encourage a Takoma Park Micro-Brewery or Distillery
- Increase city responsiveness through direct accountability
- Re-institute the capital improvement petition to encourage investment in our aging affordable housing stock.
- Assess an environmental impact fee on all new McMansions
- Build more playgrounds and dog parks
- Change the culture within our police force

Embrace the future and prove we do things a little differently here in Takoma Park. Your vote has magic powers... Your vote can change our world!



KATE STEWART

My husband and I came to Takoma Park over 20 years ago, renting on Philadelphia before purchasing on Elm where we live with our two daughters. As a City Councilperson, civil and reproductive rights

advocate, non-profit executive, small business-owner, soccer coach and parent, I have learned how to listen, hear and act on individuals' concerns and needs.

I championed funding for the TP Library, helped move Takoma Junction redevelopment planning forward while encouraging input from a broader segment of the community, elevated the issue of police-community relations to promote effective crime reduction while building public trust, and helped facilitate a public-private partnership to purchase open space.

As Mayor of Takoma Park, I will work to keep intact what makes our community unique while taking advantage of opportunities to make it even better for all residents. Increased engagement, commitment to an inclusive community, and sustainable, smart development are my top priorities.

www.KateStewartforTakoma.com
KateStewartforTakoma@gmail.com

Voter registration up to and including Election Day



Nearly all residents of Takoma Park may vote in this election. You may vote if:

- You will be at least 16 on the day of the election;
- You do not claim the right to vote elsewhere; and,
- You have lived in the city for 21 days immediately preceding the election.

U.S. citizenship is not a requirement to vote in City of Takoma Park elections. Additionally, Takoma Park has election-day registration. If you are not yet registered, arrive at the polling place with proof of identify and proof of address (such as a State of Maryland ID or driver's license). If you do not have these, contact the City Clerk at 301-891-7267 to learn about other options. If you are already registered, you do not need to do anything further.

Registración de votantes hasta el día de las elecciones e incluyendo el día de las elecciones

Casi todos los residentes de Takoma Park podrán votar en esta elección. Usted podrá votar si:

- Va a cumplir por lo menos 16 años en el día de la elección;
- Usted no reclama el derecho de voto en otra parte; y,
- Usted ha vivido en la ciudad durante 21 días inmediatamente anteriores a la elección.

La ciudadanía estadounidense no es un requisito para votar en las elecciones de la ciudad de Takoma Park. Además, Takoma Park ofrece registro electoral el propio día. Si aún no está registrado, llegue al centro de votación con la prueba de identificación y comprobante de domicilio (como por ejemplo, un documento de identidad del Estado de Maryland o el permiso de conducción). Si no tiene estos datos, póngase en contacto con la Secretaria Municipal al 301-891-7267 para aprender acerca de otras opciones. Si ya está registrado, no es necesario hacer nada más.

THIS INFORMATION WILL APPEAR ON ALL BALLOTS ESTA INFORMACIÓN SE ENCONTRARÁ EN TODAS LAS BOLETAS

CITY OF TAKOMA PARK/CIUDAD DE TAKOMA PARK MUNICIPAL ELECTION/ELECCIONES MUNICIPALES NOVEMBER 3, 2015/3 DE NOVIEMBRE 2015 Official Ballot – Ward X/Boleta Oficial – Distrito electoral X

INSTRUCTIONS

- Vote for candidates by indicating your first choice candidate, your second choice candidate, and so on for each seat. You are free to rank only a first choice if you wish, but ranking additional candidates will not affect your first-choice candidate.
- Do not mark in more than one box per column in a race. Do not fill in more than one box per candidate.
- To vote for a person whose name is not printed on the ballot, write the name in the space provided and mark the box in the column indicating your ranking of the write-in candidate.
- Do not make any identifying marks on your ballot.

INSTRUCCIONES

- Vote por candidatos en orden de preferencia indicando su primera opción, segunda opción, y así sucesivamente. Puede votar por un candidato como primera opción, si así lo desea. Eligiendo otros candidatos no afectará su primera opción de voto.
- No llene más de una casilla por columna. No llene más de una casilla por candidato.
- Para votar por una persona que no está nombrada en la boleta, escriba el nombre de la persona en el espacio asignado y llene la casilla en la columna que corresponde con el orden de preferencia.
- No haga marcas en la boleta que puedan identificarlo.

MAYOR / ALCALDE Rank candidates in order of choice. Seleccione los candidatos en orden de preferencia.	1st Choice Opción	2nd Choice Opción	3rd Choice Opción
WARREN HOLMES	<input type="checkbox"/>	<input type="checkbox"/>	<input type="checkbox"/>
KATE STEWART	<input type="checkbox"/>	<input type="checkbox"/>	<input type="checkbox"/>
Write-in Candidate / Candidato Autonominado	<input type="checkbox"/>	<input type="checkbox"/>	<input type="checkbox"/>

Advisory Ballot Question 1 – Changing the date of City Elections Pregunta consultiva para cambiar la fecha de las elecciones de la Ciudad

Beginning with the election in November 2018, and providing that voting rights can be maintained for City residents who are (1) 16-17 years old, (2) non-citizens, or (3) on parole or probation for a felony conviction, and that instant runoff voting and same day voter registration can be maintained, the City of Takoma Park municipal elections for Mayor and Councilmembers should be changed to the Tuesday following the first Monday in November in each even-numbered year in order to coincide with Maryland statewide general elections.

Comenzando con la elección de noviembre del año 2018, siempre y cuando los derechos de voto puedan ser mantenidos para los residentes de la Ciudad, quienes (1) tienen 16-17 años de edad, (2) no son ciudadanos estadounidenses, o (3) están bajo orden judicial de libertad condicional por condena de un delito, y que la votación de segunda vuelta instantánea y poder registrarse para votar el mismo día de la elección municipal pueden ser mantenidas, las elecciones municipales de la Ciudad de Takoma Park para Alcalde y Miembros del Concejo deben ser cambiados para el martes después del primer lunes de noviembre de cada año par con el fin de que coincidan con las elecciones generales estatales de Maryland.

- ☐ For / Por
☐ Against / En contra

WARD 1 CANDIDATES

PETER KOVAR

As a 23-year resident of Takoma Park, my involvement in local groups and initiatives like the Takoma Foundation, the Village of Takoma Park, and “right-sizing” the Metro development, plus my work for Congressman Frank and President Obama have helped me understand both our local challenges and potential ways of addressing them.

I appreciate our emerging businesses, but I believe further growth should respect our community’s unique character, and keep it affordable for homeowners



and renters. We also need to focus on issues like aging in place, more neighborhood engagement by police, improved youth opportunity, increased sustainability efforts, and engagement with all residents to create a more inclusive community.

My children attended the local schools, and I can’t imagine a better place for my wife and me to have raised our family. I’m thrilled to have an opportunity to be part of the City’s future as a City Council member.

www.peterkovarforcitycouncil.org

VICTOR THURONYI

The City Council could be made more competitive by reducing the number of wards to four and creating two at-large wards. Compensation for the Mayor and Council is woefully inadequate (about \$13K for mayor and \$10K for council) and should be increased by a factor of three or four.

I suggest a no vote on Question 1 (shifting city elections to even-numbered years). Instead, we should institute online voting. Online voting will increase participation and should be part of a broader



e-government initiative.

Takoma Park should take national leadership on new issues. Reducing our collective and individual carbon footprint should be a priority.

Our police should implement best practices to make sure all citizens feel comfortable interacting with police.

Reinstitute a tool lending library.

Further details on my website: google “Thuronyi for Takoma Park” or go to <https://sites.google.com/site/thuronyifortakomapark>.

ELIZABETH F. WALLACE

The most important skill your local representative must have is the ability to listen to your unique story. Only you know it the way you do. The next is to work with you, and others who have similar concerns, to find a solution befitting your dignity. Then we celebrate the resolution. The last, however, is to share the knowledge we gained with those who need it next.

The diversity we have in Takoma Park is not only of sex, age, race, ethnicity, religion, and more; it’s diversity of experience. Let’s ensure that we all pass it on.

I will focus on creating a user-friendly, customer service oriented and proactive



city hall, transparency in government, term limits of council members, protection of the vulnerable, innovative education, and good conversations ’round a kitchen table. You talk first, I’ll listen. We’ll do this together. After all, I’m your neighbor and you’re mine.

Email: wallace4ward1@gmail.com

Facebook: [wwwhttps://www.facebook.com/Elizabeth-Wallace-for-Ward-1-Refresh-City-Council-768630566582205/timeline/](https://www.facebook.com/Elizabeth-Wallace-for-Ward-1-Refresh-City-Council-768630566582205/timeline/)

Cell: 301-404-2678

LinkedIn: <https://www.linkedin.com/in/elizabethwallace>

WARD 2

TIM MALE - INCUMBENT

What a great community we share and are strengthening together! Thank you for the opportunity to serve Ward 2. I have done my best to share information about what is going on in the city and to be transparent - through weekly updates - on important decisions.

I’m proud of everything we have done together over the last four years: expanded assistance to lower income residents, little change in taxes, new voting rights, pesticide restrictions that protect the health



of all residents and were a model for the county, successful protection of McLaughlin (Dorothy’s?) Woods, and the hiring of not one but two great city managers. I’m ready to take on the challenges ahead, including supporting careful redevelopment efforts that benefit our quality of life, analysis

of how we could share costs and responsibilities for policing with the county (as Rockville and Gaithersburg do), and further sustainability work that helps our environment and lowers your bills.

ADVISORY BALLOT QUESTION - SEE PAGE 10

WARD 3

RIZZY QURESHI

My name is Rizzy Qureshi, and I live on 5th Avenue in the Pinecrest neighborhood with my wife Kelly and two children, Lila and Leo. I am seeking to represent Ward 3 on the City Council.

These are exciting times for Takoma Park, and I believe the next City Council will play an important role in our city’s promising future. My family and I chose to make Takoma Park our home because of its diversity and small town charm. I envision a Takoma Park



that fosters growth by supporting new and existing locally-owned businesses to not only create jobs, but also to serve as a vehicle for all city residents to reinvest in our community.

If given the privilege to serve, I will bring pragmatic leadership to the City Council and will help lead our city forward in a responsible and inclusive manner. To learn more, please visit www.rizzyfortakomapark.com.

Email: rizzyfortakomapark@gmail.com

Cell: 631-804-5132

WARD 4

TERRY SEAMENS - INCUMBENT

As I seek your support for reelection, I have to pause to thank those who were so caring and supportive following my open heart surgery last year. Your many kind words and actions helped me to a quick recovery. Thank you!

This past term, the council:

- Supported our businesses and developed plans for the continued improvement of our business districts;
- Advanced youth development and young adult employment; and
- Strengthened Takoma Park’s posi-



tion as an environmental leader by passing pesticide use restrictions and hiring a sustainability manager.

Looking forward, I will:

Focus on ensuring that our police adhere to the 21st century policing practices as described by President Obama’s 2015 Policing

Task Force;

Take steps to advance Takoma Park as a leader in affordable housing; and

Continue to work to bring more job opportunities to the city’s youth and immigrant residents.

Thank you for your support. Please vote November 3.

WARD 5

JARRETT SMITH - INCUMBENT

Jarrett K. Smith was elected as the City of Takoma Park’s Ward 5 Councilmember in a special election in July 2012. Since then, Councilmember Smith has been a whirlwind of activity pursuing life’s endeavors and prioritizing important issues not only to Ward 5, but to the entire city of Takoma Park.

With participation as his mantra, Councilmember Smith has been very successful in executing programs that directly impact his “care abouts” from securing funding for the Flower Avenue Green Street Project and becoming a “smart



growth” advocate to instituting a summer literacy program (now in its 4th installment), to food pantries, and bringing leadership to the development of Takoma Junction, which is a major mixed use project that will bring economic development to Takoma Junction. By running for re-election

in 2015, Councilmember Smith is seeking the opportunity to continue “participating” as a leader for progress.

Twitter: @JarrettSmith

Facebook Page: [SmithforTakomaPark](https://www.facebook.com/SmithforTakomaPark)

Website: SmithforTakomaPark.com

WARD 6

FRED SCHULTZ - INCUMBENT

Major issues in Takoma Park are piling up like autumn leaves against our front door. Most prominent are:

- 1) The developer’s plans for the Takoma Junction city-owned lot;
- 2) Washington Adventist Hospital’s possible move and what happens if they do or don’t;
- 3) the impact of the Purple Line;
- 4) EYA’s proposed project at Takoma Metro;
- 5) the perennial issue of tax duplication;
- 6) preserving quality affordable housing, and



7) the dog park. I will be working on each of these issues.

I am deeply concerned about the persistence of so many seriously deteriorated and vacant houses in our city, and I am already working on it.

In Ward 6, three major residential properties face serious challenges to residents’ well-being. The Rec Center sits in our front yard, and its replacement will focus our attention for several years.

Finally, we must be more proactive with commercial property owners along New Hampshire Ave. We cannot afford to wait and accept what they choose to serve us.



Advisory Ballot Question 1 – Changing the date of City Elections

Pregunta consultiva 1 – Cambio de la fecha de las Elecciones de la Ciudad

In this election, voters are being asked if the date of city elections should be changed to coincide with Maryland statewide general elections (the presidential and gubernatorial elections). The question is advisory only and is not binding on the Council. If the voters support it, and if the Council decides to move forward, many details will need to be worked out.

En estas elecciones, se les pregunta a los votantes si la fecha de elecciones de la ciudad se debe cambiar, para que coincida con las elecciones generales en todo el estado de Maryland (las elecciones presidencial y de gobernadores). La cuestión es meramente consultiva y no es vinculante para el Concejo. Si los votantes apoyan este cambio y si el Con-

cejo decide proseguir, tendrán que ser resueltos muchos detalles.

The text on the ballot is:
Beginning with the election in November 2018, and providing that voting rights can be maintained for City residents who are (1) 16-17 years old, (2) non-citizens, or (3) on parole or probation for a felony conviction, and that instant runoff voting and same day voter registration can be maintained, the City of Takoma Park municipal elections for Mayor and Councilmembers should be changed to the Tuesday following the first Monday in November in each even-numbered year in order to coincide with Maryland statewide general elections.

El texto en la boleta es:
Comenzando con la elección de noviembre del año 2018, siempre y cuando los



derechos de voto puedan ser mantenidos para los residentes de la Ciudad, quienes (1)

tienen 16-17 años de edad, (2) no son ciudadanos estadounidenses, o (3) están bajo orden judicial de libertad condicional por condena de un delito, y que la votación de segunda vuelta instantánea y poder registrarse para votar el mismo día de la elección municipal pueden ser mantenidas, las elecciones municipales de la Ciudad de Takoma Park para Alcalde y Miembros del Concejo deben ser cambiados para el martes después del primer lunes de noviembre de cada año par con el fin de que coincidan con las elecciones generales estatales de Maryland.

Voters should mark an X in the box “for” or “against” to indicate their preference.

Los votantes deben marcar con una X en la casilla “por” o “en contra” para indicar su preferencia.

Election Results and Swearing In of the New Council

On the night of the election, ballots will be counted and results will be announced. The results will not be final until reported to the City Council at the certification meeting on Wednesday, November 4, at 7:30 p.m.

The new city Council will be sworn in on Monday, November 16. The meeting is mainly ceremonial, with remarks from the departing members of the council and from the newly elected members. The current mayor and city councilmembers continue to serve until the new council is sworn in.

After the meeting, there will be a dessert reception in the Atrium Lobby to welcome the new council and say farewell to the retiring members. The public is invited to the swearing in and to the reception.



Resultados de las Elecciones y Toma de Posesión del Nuevo Concejo

En la noche de la elección, las boletas serán contadas y los resultados serán anunciados. Los resultados no serán definitivos hasta que sean comunicados al Concejo de la Ciudad, en la reunión de la certificación, el miércoles 4 de noviembre, a las 7:30 pm.

El nuevo concejo será juramentado el lunes, 16 de noviembre. La reunión es principalmente ceremonial, con los comentarios de los miembros salientes del concejo y de los miembros recién elegidos. Los actuales miembros del concejo y el alcalde de la ciudad seguirán sirviendo hasta que el nuevo concejo sea juramentado.

Después de la reunión, habrá una recepción con postres en el Atrium Lobby para dar la bienvenida al nuevo concejo y la despedida a los miembros salientes. El público está invitado a la toma de posesión y la recepción.

EACH WARD WILL HAVE A DIFFERENT COUNCIL CONTEST CADA DISTRITO TENDRÁ UN CONCURSO PARA CONCEJO DISTINTO

CITY COUNCIL MEMBER WARD 1/ MIEMBRO DEL CONCEJO DEL DISTRITO 1 Rank candidates in order of choice. Seleccione los candidatos en orden de preferencia.	1st Choice Opción	2nd Choice Opción	3rd Choice Opción	4th Choice Opción
PETER KOVAR	<input type="checkbox"/>	<input type="checkbox"/>	<input type="checkbox"/>	<input type="checkbox"/>
VICTOR THURONYI	<input type="checkbox"/>	<input type="checkbox"/>	<input type="checkbox"/>	<input type="checkbox"/>
ELIZABETH F. WALLACE	<input type="checkbox"/>	<input type="checkbox"/>	<input type="checkbox"/>	<input type="checkbox"/>
Write-in Candidate / Candidato Autonominado	<input type="checkbox"/>	<input type="checkbox"/>	<input type="checkbox"/>	<input type="checkbox"/>

CITY COUNCIL MEMBER WARD 2/ MIEMBRO DEL CONCEJO DEL DISTRITO 2 Rank candidates in order of choice. Seleccione los candidatos en orden de preferencia.	1st Choice Opción	2nd Choice Opción
TIM MALE	<input type="checkbox"/>	<input type="checkbox"/>
Write-in Candidate / Candidato Autonominado	<input type="checkbox"/>	<input type="checkbox"/>

CITY COUNCIL MEMBER WARD 3/ MIEMBRO DEL CONCEJO DEL DISTRITO 3 Rank candidates in order of choice. Seleccione los candidatos en orden de preferencia.	1st Choice Opción	2nd Choice Opción
RIZWAN “RIZZY” QURESHI	<input type="checkbox"/>	<input type="checkbox"/>
Write-in Candidate / Candidato Autonominado	<input type="checkbox"/>	<input type="checkbox"/>

Sample Ballots

CITY COUNCIL MEMBER WARD 4/ MIEMBRO DEL CONCEJO DEL DISTRITO 4 Rank candidates in order of choice. Seleccione los candidatos en orden de preferencia.	1st Choice Opción	2nd Choice Opción
TERRY SEAMENS	<input type="checkbox"/>	<input type="checkbox"/>
Write-in Candidate / Candidato Autonominado	<input type="checkbox"/>	<input type="checkbox"/>

CITY COUNCIL MEMBER WARD 5/ MIEMBRO DEL CONCEJO DEL DISTRITO 5 Rank candidates in order of choice. Seleccione los candidatos en orden de preferencia.	1st Choice Opción	2nd Choice Opción
JARRETT K. SMITH	<input type="checkbox"/>	<input type="checkbox"/>
Write-in Candidate / Candidato Autonominado	<input type="checkbox"/>	<input type="checkbox"/>

CITY COUNCIL MEMBER WARD 6/ MIEMBRO DEL CONCEJO DEL DISTRITO 6 Rank candidates in order of choice. Seleccione los candidatos en orden de preferencia.	1st Choice Opción	2nd Choice Opción
FRED SCHULTZ	<input type="checkbox"/>	<input type="checkbox"/>
Write-in Candidate / Candidato Autonominado	<input type="checkbox"/>	<input type="checkbox"/>

RECREATION

■ From page 6

TP Recreation Center fitness room

Fall Hours:

Tuesdays and Thursdays, noon – 9 p.m.

Mondays, Wednesdays and Fridays,
2:30 – 9 p.m.

Saturdays, 8 a.m. – 5 p.m.

Free

Table Tennis Open Play

55 and older

Come play this fun, energetic game.

TP Community Center game room

Mondays – Fridays, 9 a.m. – 1 p.m.

Saturdays, 10 a.m. – noon

Free

TRIPS

Maryland Christmas Show, Historic Frederick, Md.

55 and older

For the 32nd season, visitors will discover the joys of shopping at Maryland's premier holiday event filled with yuletide spirit. Wear comfortable shoes and warm clothing, as you will be moving between seven buildings and the "Big Top" tent filled with fine art,

pottery, furniture, jewelry, clothing, wreaths, garlands, toys, ornaments and more. Bring spending money for lunch and shopping on your own. Lots of walking. Rain or Shine. For more information, call Paula Lisowski, seniors program manager, at 301-891-7280 or email: paulal@takomaparkmd.gov. TP Community Center Recreation Office Friday, Nov. 20, 8:45 a.m. – 3:30 p.m. \$7 per person admission. No cost for transportation.

Times may be adjusted; check the trip itinerary supplied to registered participants for each trip for details.

Election Day Senior Transportation

55 and older

Election day transportation by Recreation Bus (continuous loop approximately every 20 minutes) will be provided for seniors to the polling location at the Takoma Park Community

Center (Sam Abbott Center) 7500 Maple Ave. The bus will pick up residents at Victory Tower, Maple View, Franklin and Essex Apartments and the Recreation Center (7315 New Hampshire Ave.) between the hours of 9 a.m. and 3 p.m. For more information, call Paula Lisowski, seniors program manager, at 301-891-7280 or email: paulal@takomaparkmd.gov TP Community Center Tuesday, Nov. 3, 9 a.m. – 3 p.m.

Free

Winter Break Camp

Ages 5 – 12

Come experience "Winter Break Camp" with the Takoma Park Recreation Department. Campers will have the opportunity to add some excitement to their holiday break while playing holiday games with group activities and crafts. This winter break is set to be a whole lot of holiday fun. No camp on Jan. 1.

TP Community Center Azalea Room Monday – Thursday, Dec. 29 – 31 (4 Days), 9 a.m. – 4 p.m.

TP residents \$100
Non-residents \$120

Before Care

7 – 9 a.m.

TP residents \$25

Non-residents \$35

After Care

4 – 6 p.m.

TP residents \$25

Non-residents \$35



EPC Column

Due to space limitations, the EPC Column does not appear in this month's issue. The committee recently hosted Ed

McDonough of the Maryland Emergency Management Agency and Pete Petersen, Emergency Preparedness for Pepco. Look for details about the information they shared with residents in the December issue.



Photos: Keith Kozloff

Before and After: Neighbors Clear Vines from Southern Edge of McLaughlin Woods Property

Neighborhood residents and Friends of Sligo Creek co-organized an invasive vine removal on Sept. 12. The City won its bid to purchase the property earlier this year. The next invasives trim is Saturday, Nov. 14 from 1 to 3 p.m. The group will meet at corner of lower Woodland and Circle Ave.

Unable to remove your snow? Help is on the way!

The "Snow Angels" program developed from a partnership between the student volunteer run Difference Makers nonprofit and the City of Takoma Park's Lifelong Takoma Program. We are a group of neighbors, students and families that come together to provide assistance to those who most need help.

It's easy! Residents sign up for the program, and volunteers go to their homes

to remove snow. Registration for this program begins on Oct. 31 and continues through Dec. 1. No early bird registrations.

Contact the Lifelong Takoma Program at lifelong@takomaparkmd.gov or call 301-891-7232 and leave a detailed message to include your name, house address, return phone number and specify your interest.

Snow Angels Wanted

Can't stay indoors for more than a few hours until cabin fever's got hold of you?
Do you love the fluffy white stuff and all things cold?
Do you enjoy outdoor exercise and feel good helping others?

The Snow Angels Program is recruiting volunteers for the 2015 winter season.

Contact Lifelong Takoma Program at lifelong@takomaparkmd.gov to volunteer. Please include your name, contact information and a little background information.

Volunteers being accepted through winter.

Contact us now!



The Takoma Park

Holiday Art Sale

The Takoma Park Community Center
7500 Maple Avenue
Takoma Park, Md.
Saturday, Dec. 12, 2015
10 a.m. - 4 p.m.

Takoma Park

takomaparkmd.gov/arts - arts@takomaparkmd.gov - 301-891-7224

LIBRARY



Music old or new?

By Ellen Robbins

The lines between old and new music are often blurred, especially when beloved standards are re-worked with understanding and sensitivity by younger musicians or even by their original creators. A sampling of our new music CDs is an evocative mixture that brings this idea home.

"Still the King: Celebrating the music of Bob Wills and his Texas Playboys" is a tribute album that is imbued with new life in the hands of nine-time Grammy winners Asleep at the Wheel. Bob Wills was known as the "King of Western Swing" in the 1930s well into the 1950s. In this 22-track release, Willie Nelson joins Merle Haggard, George Strait, Lyle Lovett and Del McCoury and other virtuosos in a dazzling display infused with unabashed enthusiasm for this rollicking genre.

2015 is the centennial of the matchless blues and jazz singer Billie Holiday. It's no coincidence that Cassandra Wilson's new album "Coming Forth by Day" is released now. Music reviewer Stephen Thomas Erleine has abundant praise for her celebration of Lady Day: "It luxuriates in its atmosphere, sometimes sliding into a groove suggesting smooth 70s soul, often handsomely evoking a cinematic torch song... moods that complement each other and suggest Holiday's work without replacing it." (allmusic.com)

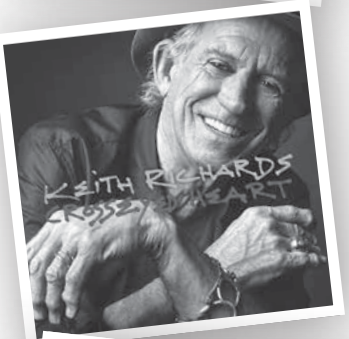
Darlene Love is included among Rolling Stone's 100 greatest singers. Her career spans 60 years from gospel to pop, and she appears in the academy award winning documentary "20 Feet from Stardom" (2013). Identified through much of her career with Phil

Spector, who obscured her original style by attributing her singing credits to The Crystals, Darlene Love re-emerges with her first solo album in 30 years. Produced by Steve Van Zandt, with songs recorded earlier by Bruce Springsteen and Elvis Costello among others, "Introducing Darlene Love" has had mixed reviews. Nonetheless, her vocal signature and prowess are abundantly clear. "This is likely the first album that Love has ever released to a wide culture of music fans who know her as the legend she always should have been rather than the footnote she once was" (Dave Bloom, Pop-matters, 9/28/15).

A legend since he began his career with the Rolling Stones, Keith Richards is rated as fourth on *Rolling Stone's* list of 100 greatest guitarists. "Cross-eyed Heart" is his first solo album since 1992. He has remained an unaffected original with unquestioned staying power. Elysa Gardner in *USA Today* observes that he is "one of the few vets in his field who has neither lost his edge nor devolved into a parody of his younger self. That enduring, effortless cool is rooted and reflected in his blues-based playing: muscular but not flashy, instinctively groovy, capable of brooding or stinging but also of expressing playfulness and joy."

In their new album "Django and Jimmie," Willie Nelson and Merle Haggard are invoking two icons that have inspired much of their music over the years: the gypsy guitarist Django Reinhardt who was legendary in the 1930s and 40s, and country-western swing musician Jimmie Rodgers. *Rolling Stone's* reviewer calls the album "a grab bag of new songs and rerecorded signatures fixed on the duo's

own mythology, largely sans blue yodels or gypsy jazz. Highlights are Haggard's "Missing Ol' Johnny Cash"...and "It's All



CALENDAR

Circle Time

Every Tuesday
Two times: 10 a.m. OR 11 a.m.

Spanish Circle Time

Every Thursday, 10:30 a.m.
Led by Senora Geiza

LEGO Club

Sunday, Nov. 1, 1:30-3 p.m.
Building fun for ages 5-12.

Bedtime Stories and a Craft

Tuesday, Nov. 3, 7 p.m.
Join Ms. Kati for this fun monthly program.

Friends of the Library Big Book Group

Wednesday, Nov. 4, 7:30 p.m.
Discussion of George Eliot's "Daniel Deronda."
Takoma Park Community Center Hydrangea Room

Petites Chansons/French Circle Time

Saturday, Nov. 7, 10:30 a.m.
Join Madame Marie for French rhymes and songs.

Eaglebear & Friends

Monday, Nov. 9, 7 p.m.
Join us for a look at Apache and Xicano culture.
All ages

Newbery Medalist Phyllis Reynolds Naylor

Tuesday, Nov. 10, 7:30 p.m.
Come hear Naylor talk about the final "Shiloh" book.
Takoma Park Community Center Auditorium
Friends of the Library Reading Group
Thursday, Nov. 12, 7:30 p.m.
Discussion of "Claire of the Sea Light" by Edwidge Danticat
Takoma Park Community Center Hydrangea Room

Crafts for Kids

Sunday, Nov. 15, 2-3 p.m.
Kids are invited to make Halloween crafts; all materials provided.

Friends of the Library Board Meeting

Tuesday, Nov. 17, 7:45 p.m.

Friends of the Library Big Book Group

Wednesday, Nov. 18, 7:30 p.m.
Discussion of George Eliot's "Daniel Deronda."
Takoma Park Community Center Hydrangea Room

National Games Day Celebration

Saturday, Nov. 21, 2-4 p.m.
Join us for a rousing game of Dungeons & Dragons!
Our event is for kids ages 8 up; parents also welcome.
Spaces limited; registration required.
To register, go to: www.tinyurl.com/tplibraryevents or call 301-891-7259.

LIBRARY BRIEFS

Books & Breakfast

This school year, the Library is partnering with the ESOL teachers at Takoma Park Elementary School in a special "Books & Breakfast" program.

Funded by a grant from the Takoma Foundation, the "Books & Breakfast" program is designed to connect ESOL parents and their pre-K and kindergarten children with helpful local resources, including the Library.

At each of the four hour-long meetings (October, November, February and March), participants are given breakfast while ESOL teachers model ways to read aloud and offer other helpful tips to encourage families to make books and reading part of their daily lives. Participants are given a new book at each of the meetings, plus other literacy tools, such as a jar of magnetic letters.

The "Books & Breakfast" program had a successful debut during the last school year (2014-2015), and the ESOL team decided that adding the Library as a partner this year would further enhance their efforts to teach parents how to help their children build pre-literacy skills.

As part of the Library's participation in the "Books & Breakfast" program, Karen MacPherson, children's and teen services coordinator, will help parents and children register for Library cards and also introduce them to the many resources the Library has to offer. These include print and electronic books in Spanish and French for all ages, numerous book-related events, and a fully-staffed Computer Center. The Library also has numerous online resources, including one for learning English, as well as numerous other languages.

A recent Pew Research Center re-

port, "Public Libraries and Hispanics," underlined the importance of libraries to immigrant Hispanics, once they discover what the public library has to offer them. This Pew report is just one more indication of how connecting Hispanics and other immigrants with their local public library can offer them a key educational and cultural lifeline. It is this connection that the "Books & Breakfast" teachers, working with the Library, hope to offer their participants this school year.

Phyllis Reynolds Naylor program

Newbery Medalist Phyllis Reynolds Naylor will talk about the fourth book in her "Shiloh" series on Tuesday, Nov. 10 at 7:30 p.m. in the Takoma Park Community Center auditorium.

Titled *A Shiloh Christmas*, aimed at readers ages 8-12, Naylor's new book continues the saga of a beagle named Shiloh and Marty Preston, the young

LIBRARY BRIEFS □ Page 13



Phyllis Reynolds Naylor in her writing chair

MUSIC □ Page 13

Join the Friends for the year of the international novel

By Tim Rahn

Join the Friends Reading Group to discuss Edwidge Danticat's novel *Claire of the Sea Light* on Thursday, Nov. 12 at 7:30 p.m. in the Hydrangea Room of Takoma Park Community Center.

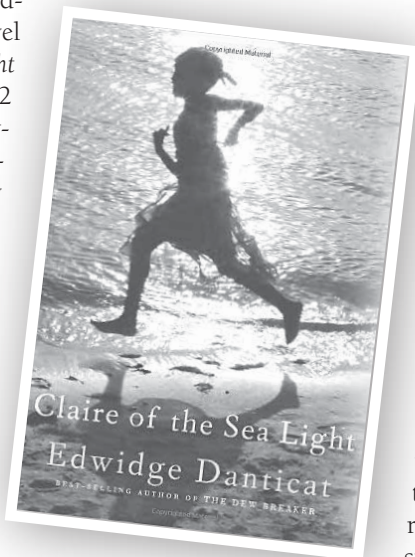
Claire of the Sea Light takes place in a fictitious Haitian town, Ville Rose. Within the first couple of pages of the novel, Danticat describes two profound events. First, she tells how Claire's fisherman father has learned of the death of another fisherman and then she reveals that the father has made the difficult decision to let another person raise Claire.

The evening of the same day, Claire's birthday, she goes missing. Danticat uses the stories of neighbors and acquaintances

to explore the mystery of Claire's disappearance. We learn how Claire, whose mother died giving birth to her, has touched the lives of the other characters and what these relationships mean.

One reviewer commented that much of Danticat's fiction is about "how the coercive power of collective silence about gender, race, and inequity creates deeply personal damage for individuals." *Claire of the Sea Light*, she comments, "is a further investigation of the infinitely rippling consequences of silence."

Born in Haiti and raised in New York City, Edwidge Danticat has won numerous awards for her fiction. *Claire of the Sea Light* was short-listed for the Andrew Carnegie Medal for Excellence in Fiction. Danticat is considered a major voice of the Haitian Diaspora.



LIBRARY BRIEFS

■ From page 12

boy who rescued him from an abusive owner. The new book comes 24 years after Naylor published the first book in the series, *Shiloh*, which won the 1992 Newbery Medal, given to the best-written children's book each year by the American Library Association.

Since then, Naylor has published two sequels, *Shiloh Season* and *Saving Shiloh*. In *A Shiloh Christmas*, Naylor tells how Marty and his family reach out to Judd Travers, Shiloh's formerly abusive owner, when his house and others are burned in a drought, and Travers is suspected of arson. Meanwhile, a new preacher has come to Marty's town of Friendly, W.Va., and it seems the preacher is more interested in stirring up controversy than talking of mercy.

In a starred review, *Kirkus* said, "Shiloh's move from abused pup to well-loved pet is an ideal metaphor for the plot's vari-

ous redemption stories, which culminate on Christmas day. Perfect for longtime fans of the series and newcomers alike, this Christmas story can be enjoyed year-round."

Meanwhile, *School Library Journal* noted in its review of *A Shiloh Christmas*: "This is not so much a Christmas story as it is a book about practicing tolerance, acceptance, and forgiveness and recognizing one's own moral compass. In response to Marty's many philosophical questions, his loving and supportive parents offer realistic guidance, advice and discipline. As expected, Shiloh the dog plays a pivotal role in bringing about a happy resolution for Judd and Marty."

Politics & Prose will be selling copies of Naylor's books at the event, but the program is free, and no purchase is required to attend. Please join us for what promises to be a very special event with a top author.

MUSIC

■ From page 12

Going to Pot," the "420 Day" single that shows two masters nailing the right song at the right time."

In her album "The Trackless Woods," vocalist and composer Iris DeMent is inspired by the poems of Anna Akhmatova, who was born in 1889 and died in 1966. Dement and her husband adopted a child from Russia when she was six, and this album is in part an attempt to build a "symbolic bridge" to her daughter's homeland." What is so amazing is that she is inspired by a past that is neither her own,

nor strictly musical. According to NPR, "Iris DeMent makes music that celebrates humanity's efforts toward salvation, while acknowledging that most of our time on Earth is spent reconciling with the fact we don't feel so redeemed. Grounded in hymns, early country songs, gospel and folk, DeMent's work is treasured by those who know it for its insight and unabashed beauty."

Visit the Library soon to hear albums by some of the most creative and accomplished musicians recording today, who both celebrate and re-imagine their artistic inspirations.



Photos by Kevin Adler

Takoma Foundation Hosts Seventh Annual Beerfest

On Sept. 26 the Takoma Foundation's annual Beerfest welcomed more than 500 guests and raised more than \$20,000. The foundation makes grants for local projects that empower individuals and build connections across the community. Pictured attending the Beerfest are (left to right) Francisco Taitano, Vicki King, Caryl Ashrey, and Josh Kurtz; Takoma Park resident Christian Layke of Gordon Biersch Brewer serves attendees.



Pia Teehan signs up to be a driver for Village Rides.

COMMUNITY

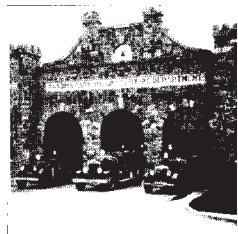
■ From page 3

Thareth and Vicky, and a host of others. Mountains of falafel and baklava fueled conversation among folks with walkers and those with strollers. As groups chatted over Blessed Coffee and apple juice, connections were made and community strengthened.

The day concluded with a "Community Conversation" about building an "age-friendly, intergenerational linked City." The Takoma Community Band, whose members span generations, kicked things off. Bryan Goehring, representing Tako-

ma Park Middle School's Difference Makers, noted that the composition of that band is an example of what makes the City special.

Many residents are aware of the Snow Angels program (see p. 12) where TPMS students help clear the walkways of seniors and disabled residents during the winter. Goehring noted that an unintended outcome of this program is that some of the residents it serves have in turn volunteered to help the school in any way that they are able. Takoma Park appears to be on its way to building that linked community.



THE FIREHOUSE REPORT

By Jim Jarboe

As of Sept. 30, the Takoma Park Volunteer Fire Department and the personnel of the Montgomery County Fire and Rescue Service assigned to the station have responded to 480 fire-related incidents in 2015. The department addressed or assisted with 2,447 rescue or ambulance-related incidents for a total of 2,927.

Totals for 2014 were 501 and 2,138 representing an increase of 288 incidents.

During the month of September 2015, the Takoma Park volunteers put in a total 1,234 hours of standby time at the station, compared to 1,437 in September 2014. Grand totals as of September 2015 are 11,970 hours, compared to 12,528.5 hours in 2014, a decrease of 558.5 hours.

Maryland fire deaths

The Maryland State Fire Marshal Office reported as of Oct. 9, 45 people have died in fires, compared to 40 in October 2014.

TPVFD Member Receives MCVFRA Award

At the Montgomery County Volunteer Fire Rescue Association's Annual Banquet held on Sept. 17, Auxiliary President and TPVFD Office Station Coordinator Tina Willey received the "Administrative Member of the Year Award." She has been a member of the Auxiliary since 1977. She assists on many committees and serves on the department's board of directors. When you need assistance, she is always there to help. Congratulations!

Halloween Trick or Treating: Keeping Your Children Safe

October 31 is traditionally known as Halloween. It's an exciting and fun time for children. It is time when they go door-to-door in their neighborhood wearing costumes or makeup, seeking candy from neighbors. From the time they leave their home until they return, their safety and well-being rests with responsible relatives or trusted friends.

Planning ahead for Halloween begins with ensuring that children's costumes and makeup are safe to wear and making them aware of potentially dangerous situations or conditions that may occur during trick-or-treating and

how to avoid them. Below is a list of safety tips. Please share them with your children.

- Buy costumes that are flame-retardant (check the label, package or with a store salesperson), short enough to avoid trips and falls and eyeholes in masks are large enough to avoid blocked vision. Add reflective tape to costumes and candy-collection bags.
- Stay away from lit candles and other open flame sources to avoid costumes catching fire and causing harm.*
- Exercise caution when considering use of decorative contact lenses and make up (face paint), as they may cause allergies or injury. Check with a health specialist for guidance/advice.
- Check the trick-or-treat route ahead of time for any potential hazards and to identify turn-around point to return home. You should trick-or-treat inside your community's neighborhood only.
- A trusted adult should carry a fully charged cell phone for ready use to use 911, in the event of an emergency during trick-or-treating.*
- Hold a flashlight with fresh batteries, to see and for others to see you.
- Avoid trick-or-treating alone. Walk in groups or with a trusted adult. Don't run from house to house; always walk.
- Never accept rides from strangers.
- Visit only well-lit homes, but never enter unless with a trusted adult.
- Walk only on sidewalks whenever possible, or on the far edge of the road facing traffic to stay safe.
- Look both ways before crossing the street. Use established crosswalks wherever possible.
- Do not eat candy until it has been inspected at home.
- Tell children not to eat or accept anything that isn't commercially wrapped. (Parents of very young children should remove any choking hazards such as gum, peanuts, hard candies, or small toys.)
- Inspect commercially wrapped treats for signs of tampering, such as an unusual appearance or discoloration, tiny pinholes, or tears in wrappers. Throw away anything that looks suspicious.

* Added by the TPVFD

Sources: www.cdc.gov/halloween/ and www.fda.gov/Consumers/ConsumerUpdates/ucm230283.htm. Read both articles for more tips and information.

This Halloween Safety flyer was prepared and distributed by the Takoma Park Volunteer Fire Department.

Takoma Park City attorneys are moving to the Takoma Business Center

Silber, Perlman, Sigman & Tilev, P.A., is moving. The firm has been on the corner of Carroll and Laurel in Old Town for twenty-seven years and has served as the city attorneys for Takoma Park as well as assisting clients in Takoma Park and the DC-Metro region. The law firm is moving its offices to the Takoma Business Center, just a few doors down from its current location, where clients will have access to elevators and great views of Takoma Park. The firm's new location will be 6930 Carroll Ave., Suite 610, Takoma Park, Md. 20912 as of Nov. 1, 2015. The firm looks forward to continuing to serve clients from its new space.



Takoma Business Center

Neighborhood Energy Challenge

Case Study: Home energy efficiency makeover

By Gina Mathias and Alexandra Young

Winter is coming, and with it chilly drafts and high heating bills. Most home owners can likely pinpoint a few of the biggest energy wasters in their homes, but many of the places in your home that drive up your bills remain harder to diagnose. That's where a professional comprehensive home energy audit can help.

Takoma Park resident Keith Kozloff recently had a comprehensive energy audit. He also helped his neighborhood team earn points for the Neighborhood Energy

Challenge by completing upgrades to his home to save energy.

Costs:

Energy audit: \$0 after rebate and subsidy. Keith initially paid \$100 for the energy audit, which normally costs \$400. Because he chose a participating Pepco contractor, the cost is subsidized through EmPOWER Maryland. Through City of Takoma Park Energy Efficiency Rebate Program, Keith received a \$100 rebate for the energy audit.

Energy audit recommended work: \$1,512 after rebates. The total cost for the insulation and air leakage reduction package was \$4,262.30. Keith qualified for the 50 percent, up to \$2,000 Pepco insulation and air sealing rebate, the Takoma Park 25 percent up to \$500 energy efficiency rebate, and the \$250 Montgomery County energy efficiency tax incentive.

Lifetime energy savings: \$3,005. The recommended work included whole-home air leakage reduction attic insulation and crawl space insulation.

What was the biggest surprise the energy audit revealed for Keith? He had no idea that a large amount of air was getting through his 2nd floor crawl space (or "kneewall"). The energy audit revealed that the space was only half insulated, making it ambiguous if it was an interior or exterior space. After speaking with the auditor and learning the options for how to better treat the space, Keith decided to make the crawl space an exterior space. He moved the insulation and fiberglass batts to an inner wall and then covered the wall with a reflective air barrier. Keith



The door to the 2nd floor crawl space (kneewall) as well as the walls were insulated and sealed, and small holes drilled into the floor so that dense pack insulation could be sprayed in.

Highlights from the Takoma Park Street Festival

Originally postponed due to weather concerns, Takoma Park's 34th annual Street Festival was held on Sunday, Oct. 18. Some of the area's finest merchants and artisans turned out for the event. In addition to visiting with vendors, festivalgoers also got the chance to feast on some local favorites.



In front of one of Takoma's newest businesses Scissor and Comb, Nicole Lueschow, who works there as a hairdresser, showcases products from her unisex beauty line PAX beauty



Takoma resident Marcelle Fozard with her fun chicken art



Karen Coston, Karen Coston Jewelry



Festivalgoers enjoy Curley's BBQ



Amy Oliver Beaupré, Innisfree Designs

Photos by Selena Malott

ENERGY CHALLENGE

■ From page 14

also insulated the half door leading to the space. The contractor sprayed dense pack insulation in the floor through holes drilled in the floor.

Other improvements included sealing air leaks in the attic floor, basement, and other areas of the home with caulk and spray foam. After the contractors achieved a targeted rate of air leakage reduction, measured by a blower door, insulation was added to attic floor to bring the total thermal value of attic insulation to R49. Keith hopes an upstairs bedroom that was too warm in the summer and a downstairs office that is too drafty in the winter will be much more comfortable.

The importance of working with a professional energy auditor:

Many do-it-yourselfers can install insulation, caulk and spray foam. Beyond finding energy savings, however, energy auditors perform tests to ensure that projects are completed in compliance with safety standards. A blower door test measures how drafty your home is, ensuring it is within safe levels. Most homes in Takoma Park are well over the building air-flow standard necessary for safe indoor air quality. However, over-tightening your home can cause once properly venting gas appliances to back-draft, spilling dangerous flue gasses into your home.



Basement: The band joist line in the basement was sealed with spray foam, along with other draft sources throughout the home to prevent air leakage.

Combustion safety tests measure the pressure of flue gasses being vented from the appliance to outside your home, including carbon monoxide. While the blower door is running, there is also a better chance to find hidden drafts and areas of missing insulation, especially when used with an infrared camera.

The improvements didn't stop with insulation and air leakage reduction. Committed to helping reduce greenhouse emissions, helping his neighborhood win the Neighborhood Energy Challenge, and the City win the Georgetown University Energy Prize, Keith has made more

changes that will make home as energy efficient as possible and earn him a Takoma Park Dark Green Home certification.

Solar PV rooftop installation: \$7,209. Total system cost before federal and state tax credits \$11,433.

Solar lifetime electricity savings: \$28,094. System size is 2.94 kW. This will generate approximately 3,323 kilowatt hours of electricity per year, representing about 70 percent of Keith's total electricity needs annually. This estimate was made before many of Keith's energy efficiency improvements were completed; the total dollars saved on electricity may be lower;

however the panels may get closer to generating 100 percent of Keith's electricity needs.

Other energy efficiency improvements Keith has made:

- Super efficiency boiler and hot water system
- Energy star appliances (refrigerator, washer and dryer, dishwasher)
- Programmable thermostats
- Motion sensors on outdoor CFL security lights
- LED and CFL light bulbs throughout home
- Blinds and shades on windows to minimize/maximize solar heat gain in summer/winter
- Ceiling fans to make rooms more comfortable at a higher temperature in summer
- Faucet aerators
- Power strips on electronic device centers
- Cleaning refrigerator coils every six months to improve function
- Blocked off fireplace to prevent drafts

Would Keith recommend using an energy auditor and making audit-recommended upgrades to his neighbors? "Sure, I would recommend this to my neighbors," he says. "There are three motivations: one is to save money, another is to increase comfort, and the final one is to reduce greenhouse gas emissions." We couldn't agree more.

NOVEMBER '15

Do you have an item for the city calendar?

Do you have an item for the city calendar? Let us know if you have a nonprofit event that would be of interest to City of Takoma Park residents, and we'll consider it for inclusion in the calendar. Deadline for the December issue is Nov. 16, and the newsletter will be distributed beginning Nov. 27.

To submit calendar items, email tpnewseditor@takomaparkmd.gov.

"TP Community Center" is the Takoma Park Community Center, 7500 Maple Ave., Takoma Park.

All addresses are in Takoma Park or Takoma, D.C., unless otherwise noted.

PUBLIC MEETINGS / OF NOTE

City Council

No City Council meetings are scheduled for November.

Detailed agendas are always available for review online at www.takomaparkmd.gov/citycouncil/agendas.

Veterans Day

Wednesday, Nov. 11

Trash, food waste and recycling will be collected on Thursday, Nov. 12.

Thanksgiving

Thursday, Nov. 26

Trash, food waste and recycling will be collected on Wednesday, Nov. 25.

Day After Thanksgiving

Friday, Nov. 27

Trash, food waste and recycling will be collected on Saturday, Nov. 28.

Takoma Park Emergency Food Pantry

First Saturdays, 11 a.m. – 2 p.m.

Grace United Methodist Church, 7001 New Hampshire Ave.

Bi-weekly and monthly food supplements for needy families

240-450-2092 or educare_ss@yahoo.com

www.educaresupportservices.org

COMMUNITY ACTIVITIES

Kid's Night Out

First and third Fridays, 7:15 – 8:30 p.m.

Takoma Park Recreation Center

Fun and games for kids

Teen Night

Second and fourth Fridays, 7:15 – 8:30 p.m.

Takoma Park Recreation Center

Games and activities just for teens

Takoma Park Farmers Market

Sundays, 10 a.m. – 2 p.m.

Year-round

Laurel and Carroll avenues in Old Town

Locally grown produce, baked goods, meats, cheeses

Crossroads Farmers Market

Wednesdays, 11 a.m. – 3 p.m.

Behind Expo Emart at 1021 University Blvd.

Locally grown fresh fruits, vegetables and herbs plus pupusas and other prepared food

Food Truck Fridays

Fridays, 5 – 8 p.m.

Takoma Junction, next to TPSS Co-op, 201 Ethan Allen Ave.

Trohv, 232 Carroll St., NW

Various food vendors

Community mural paint sessions

Wednesdays through Nov. 18, 4 – 7 p.m.

Saturdays through Nov. 18, 10 a.m. – 1 p.m.

Come out to help paint a community mural near New Hampshire Ave., on the side of an ALDI supermarket.

7609 New Hampshire Ave.

ARTS AND LITERATURE

People's Open Mic

Sundays, 9 p.m.

Republic restaurant, 6939 Laurel Ave.

www.republictakoma.com

Drum for Joy! with Jaqui MacMillan

Mondays, 7 – 8:30 p.m.

Electric Maid, 268 Carroll St.

Learn hand drumming

Blues Mondays

Mondays, 7:30 – 10:30 p.m.

Republic restaurant, 6939 Laurel Ave.

www.republictakoma.com

Open Mic Night

Tuesdays, 9 – 11 p.m.

Busboys and Poets, 235 Carroll St. NW

Jazz Jam

Tuesdays, 7 – 10 p.m.

Takoma Station, 6914 14th St. NW

Open mic for jazz musicians

Wednesday Night Drum Jams

Wednesdays, 7 – 9:30 p.m.

The Electric Maid, 268 Carroll St. NW

Hosted by Katy Gaughan and friends

BDSM: Sex, Hobby, Religion or Art?

Thursday, Nov. 5, 7:30 – 9:30 p.m.

Thanks to the popular novel and movie "50 Shades of Grey," BDSM (Bondage & Discipline, Dominance & Submission, Sadism & Masochism) has become the topic of increasing public interest. Gallaudet Professor Julie Fennell will provide an in-depth academic perspective describing the BDSM subculture and why it thrives.

TP Community Center

Free

Bob Franke & Claudia Schmidt

Friday, Nov. 6, 7:30 p.m.

Songwriter Bob Franke plays his songs like "Hard Love," "For Real," "Beggars To God" and "The Great Storm Is Over," which have been covered by performers from June Tabor to Peter Paul & Mary to John McCutcheon and Tony Rice. Singer Claudia Schmidt accompanies.

Carroll Cafe at Seekers Church 276 Carroll St. NW

\$18 in advance and \$20 at door

carrollcafe.org

Lionel Daniels: Performance Painter & Artist

Saturday, Nov. 7, 7:30 – 9:30 p.m.

Performance painter Lionel Daniels combines painting, dance, and digital media in one live-painting performance titled "Unrest." Daniels' work explores black unrest and civil matters in the United States. Daniels will conclude his show with a 15-minute Q&A with the audience.

TP Community Center

Free

Community Stories Festival

Thursday, Nov. 12, 7:30 p.m. – 9:30 p.m.

Docs In Progress presents its fifth Community Stories Festival, an evening of homegrown documentaries produced about people and places around Takoma Park and Montgomery County.

TP Community Center

Free

Third Thursday Poetry Reading – We Are Takoma

Thursday, Nov. 19, 7:30 p.m. – 9:30 p.m.

The popular "Third Thursday" poetry series features the work of a wide range of poets from across the region.

TP Community Center

Free

Mosno Al-Moseeki and the Greek Nubian Collective

Saturday, Nov. 21, 7:30 p.m. – 9:30 p.m.

Known as the 3rd World Rocker, Mosno Al-Moseeki is an international singer/songwriter and native of Sudan. His music fuses Arab-poetic lyrics with a pentatonic-influenced style of acoustic alternative rock, which he calls "Desert Eclectic."

TP Community Center

Free

Snow Angels Snow Removal program

Last Day to Register: Dec. 1

This program provides snow removal services to City of Takoma Park residents who are physically unable to remove their snow. See p. 11 and the Lifelong Takoma web page (www.takomaparkmd.gov/lifelongtakoma) for more information.

Upcoming Events

Breakin' Around the Bloc: Hip-Hop Culture in East Germany during the Cold War

Thursday, Dec. 3, 7:30 – 9:30 p.m.

Leonard Schmieding, a visiting professor at Georgetown University, describes this transfer of African American culture from West to East and analyzes its impact on the everyday life of teenagers in East Germany during the last decade of the Cold War.

TP Community Center

17th Annual Takoma Park Alternative Gift Fair

Saturday, Dec. 5, noon – 4 p.m.

Sixteen locally based nonprofits working on local, national and international causes talk with "shoppers" and explain their work.

Takoma Park Presbyterian Church

More details below

Instruments of the Future

Saturday, Dec. 5, 7:30 – 9:30 p.m.

An evening of improvised music that explores vast sonic terrain, using both traditional instruments and self-built instruments made from found objects. The music draws from elements of avant-garde jazz, European free improvisation, and contemporary classical music.

TP Community Center

Holiday Art Sale

Saturday, Dec. 12, 10 a.m. – 4 p.m.

TP Community Center

The Takoma Park Arts & Humanities Commission will host the 10th annual Holiday Art Sale on Dec. 12. Each year the sale features over 30 regional artists and crafters.

17th Annual Takoma Park Alternative Gift Fair

Saturday, Dec. 5

Noon-4 p.m.

Takoma Park Presbyterian Church
310 Tulip Ave. (corner of Tulip & Maple),
three blocks from the Takoma Metro Station,
Takoma Park, Md. 20912

Sponsored by Alternative Gifts of Greater Washington (www.aggw.org) and the Takoma Park Presbyterian Church, with the participation of Sun Trust Bank, the Takoma Park Child Development Center and Girl Scout Troop 1456.

Fun, festivity and holiday shopping for gifts that touch people's hearts and make a difference to those in need. Working from shopping lists, you can make donations to charities and fund a specific service or item. For each donation, you receive a certificate detailing the gift your donation has made possible. Shoppers can give these donation certificates in lieu of consumer gifts for holidays, birthdays, weddings, bar and bat mitzvahs and other events. More than 40 gifts priced from \$5 to \$100 will be offered this year.



Bring the whole family. A supervised Kids Corner with special staff will entertain your children while you shop. At the "Eat One/Share One" cookie booth run by Girl Scouts, kids can decorate and donate cookies for the homebound (as pictured here). The event

also features live music by local performers and great raffle prizes contributed by local businesses.

100% of the gifts you purchase go to the charities. All gifts are tax-deductible and

include a certificate to drop into a holiday card. Stress-free holiday shopping done!

For information or to volunteer, contact Mimi Ikle-Khalsa, fair director at 301-891-8891 or aggw_inc@yahoo.com.

