



**City of Takoma Park, Maryland
Request for Proposals (RFP): Furniture Package for the
Takoma Park Maryland Library and Community
Center Redevelopment Project
#LIB-2024-01**

ISSUANCE DATE: Tuesday, December 31, 2024

SUBMISSION DEADLINE: Monday, January 27, 2025, 7:59 AM EST

PURPOSE: The City of Takoma Park (“City”) invites qualified vendors (“Vendors”) to submit proposals to provide furnishings for the Takoma Park Maryland Library and Community Center Redevelopment Project.

INQUIRIES: Jessica Jones, Library Director
City of Takoma Park
7500 Maple Avenue
Takoma Park, Maryland 20912
301-891-7258
JessicaJ@takomaparkmd.gov

Table of Contents

Project Introduction 3
 Procurement Overview 3
 Project Overview 3
 Project Background..... 3
 Project Design and Aesthetics..... 4
 Sustainable Design..... 4
 Accessible Design..... 4
Project Requirements 5
 Project Scope 5
 Deduct Alternates..... 5
 General Requirements..... 6
 Product Testing Requirements 6
 Upholstery Performance Requirements 6
 Padding Requirements 7
 Substitutions..... 7

Licensing, Accreditation and Registration.....	8
Conformance with Laws	8
Timeline	9
General Clarification and Questions	9
Submission Information and Deadline.....	10
Submission Requirements.....	10
Evaluation and Award Criteria	12
General Conditions	13
City Form Contract	17
Forms	32
The following forms are included:.....	32
Form A: Qualification and Certification Statement.....	32
Form B: Non-Involvement in Nuclear Weapons Industry	32
Form C: Living Wage Requirements Certification.....	32
Form D: MWCOG Rider Clause	32
Additional Attachments	41

Project Introduction

Procurement Overview

The City of Takoma Park (“City”) is issuing this Request for Proposals (“RFP”) to engage a furnishings vendor (“Vendor”) to supply furnishings for the new facilities resulting from the Takoma Park Maryland Library and Community Center Redevelopment Project (“Project”).

The Takoma Park Maryland Library (“Library”), Computer Center (“Computer Center”), and Community Center (“Community Center”), also known collectively as “facilities” or “the facilities,” serve the public of Takoma Park and Montgomery County, Maryland. They are located at 101 Philadelphia Avenue, Takoma Park, Maryland 20912 and adjoin the majority of City offices on a single site.

Project Overview

The current facilities involved in this Project include the Library, Computer Center, and some Recreation Department spaces (Senior Room and Recreation staff offices). All of these areas are part of the site plans for construction and renovation, and the Project will be seeking LEED Gold certification.

The City anticipates awarding a contract for furnishings required for the Project, including furnishings for both City staff and public use. Furniture in the public areas will include a variety of seating options, task chairs, desks, tables, and moveable chairs and tables in the Library program room. Furniture in the staff areas will include task chairs, desks, cubicle structures, storage, and conference tables and chairs.

RRMM Architects (“RRMM”) has been selected for the design and engineering (“A/E”) of the Project. Construction is underway and substantial completion is currently scheduled for late spring of 2025. It is expected that the Vendor will collaborate with RRMM on all matters related to translation of the scope herein to a comprehensive furniture package deliverable.

Project Background

The former Library facility was originally built in the 1950s and had undergone a series of comparatively smaller expansion and renovation projects over the years. Originally a freestanding structure, the Library footprint has been gradually increased to merge with the Community Center. The most recent significant improvements were made in a 1990 interiors project that included remodeling, electrical work, painting, carpet and tile installation, and the procurement and installation of vinyl composite tile for the Library Staff areas..

The Project was originally approved in 2014, and RRMM was commissioned to perform the design and engineering work shortly thereafter. The work will expand the Library and Computer Center's footprint from 9,400 square feet to 19,025 square feet to create a more modern, safe, functional, and welcoming facility. The designs include a program room, children's area, teen area, private study rooms, new staff work areas, and new Computer Center spaces. The renovation of the existing Community Center will include a new room for small community events, gender inclusive restroom facilities, and a renovated staff office for the Recreation Department.

Project Design and Aesthetics

The Takoma Park Maryland Library is the only municipal public library in the state of Maryland, and it has persisted despite county consolidations of other libraries in the state because it is a beloved local institution reflecting the unique character of Takoma Park. As such, the aesthetics of this Project reflect a desire to keep color and character in the facilities, with a mix of traditional and modern finishes, and with the goal that these furnishings will retain a timeless feel to match the durability of their materials.

The remainder of the facilities, including the Computer Center, Recreation staff offices, and new public restrooms and meeting rooms, will blend with the Library's design choices while also reflecting the preferences of the relevant departments.

Sustainable Design

The City of Takoma Park values and prioritizes sustainability in all of its functions, including this Project, which is seeking LEED Gold certification at completion.

Furnishings will be selected, whenever possible, to promote LEED objectives while improving the indoor environment for building occupants. Materials will be selected, whenever feasible, that have a high recycled content, are low emitting, and that are recyclable at the end of their useful life.

Accessible Design

The City of Takoma Park values accessibility and inclusivity. These facilities are designed for public access, and all public areas must be fully accessible and inclusive, which these furnishings should reflect. Staff spaces must also be adaptable where full accessibility is not practical, so as to provide reasonable accommodations where necessary.

Project Requirements

Project Scope

Under this RFP, the City will engage a Vendor to provide necessary furnishings and furniture required to complete the Project. The Project shall be complete, operating and ready for use within the specified time frame and within the Project's budget as specified in this RFP.

The Project will be located at 101 Philadelphia Avenue, Takoma Park, Maryland 20912.

Generally, the Vendor's responsibilities shall include, at a minimum, the following:

1. To confirm the itemized scope of the RFP furnishings.
2. To provide all procurement, personnel, management and supervision, and equipment necessary to fulfill the RFP requirements.
3. To store furnishings until they can be safely delivered to the Project site.
4. To deliver the furnishings to the Project site.
5. To perform any necessary assembly or reconstruction of the delivered items.
6. To arrange the delivered items in accordance with the furniture plan as drawn and directed by RRMM in the Furniture Plan attachment appended to this document.

Deduct Alternates

In concordance with the City's value of sustainability, three trunks from trees removed from the Project site have been saved, and the City is working with an artisan to reclaim materials from these trunks for use in limited Project furnishings. We are currently coordinating with the artisan to estimate the number of tables that can be built from the salvaged material.

To that end, the City may elect to deduct a number of the items listed below from the package (Attachment 2), once the reclaimed materials have been appraised, quantified, measured, and found suitable for their construction. The City will make this information available as soon as the artisan is able to provide an updated timeline and scope of work that can be completed before the new facilities open to the public. If a specific date for this information is required by the Vendor, we would request that this date be shared as soon as possible to coordinate effectively with the artisan.

1. Item M01: Display case
2. Item T01: Occasional table
3. Item T06: Round table
4. Item T08: End table

General Requirements

All products will be manufactured as new products. Used, reworked, or refurbished products are not acceptable in this proposal. All products will meet or exceed all applicable ANSI/BIFMA performance standards. The furniture systems will have capacity to be configured with commonly available tools. Any special tools required to assemble products will be provided at no additional cost. All products will have warranty covering all materials and workmanship with a 12-year minimum; limited lifetime is preferred. All warranty information should be included in the proposal for City consideration. All labor and handling costs associated with warranty work shall be at no cost to the City of Takoma Park. The manufacturer shall commit to non-obsolescence of specified products for a minimum of 10 years. The warranty coverage shall be conveyed to the City upon final occupancy.

All products offered must meet or exceed applicable Product Testing Requirements. All products must be available in matching finish colors and textures and have coordinated dimensions for proper fit and integration. The Vendor is required to confirm that their offer meets or exceeds each product's testing requirements and technical specifications. Dealer to determine quantities from provided documents.

All products shall be the manufacturer's standard product. All standard product line finish options shall be available as an option at no additional cost.

The majority of systems furniture panels will be powered from the wall or column and in some case through poke throughs.

The Vendor is responsible to meet all local and seismic codes. Bookcases, storage cabinets, etc. over 36" in height shall be provided with a method to prevent tip over due to local seismic activity and unbalanced loading.

NOTE: All hard-wired electrical connections will be the responsibility of the furniture contractor awarded the bid; therefore, a licensed electrician will need to be retained by the dealer. Include these charges in your bid proposal. Whips will need to be provided 6 weeks prior to installation commencement. Furniture manufacturers will be responsible for providing appropriate whip lengths to power sources. Whips are the responsibility of the furniture installer and cost needs to be accounted for in bid.

Product Testing Requirements

Upholstery Performance Requirements

Fabric to meet the following:

1. Flammability: California Technical Bulletin 117-2013 Section 1 – Pass
2. Light Color Fastness: AATCC 16 Option 1 or 3 Grade 4 Rating @ 40 hrs.
3. Dry Crocking: AATCC 8 Grade 4 Rating

Project Requirements

4. Wet Crocking: AATCC Grade 3 Rating
5. Pilling: ASTM D3511 Class 3-4 Rating, minimum
6. Breaking Strength: ASTM D5034 50lbs. min. in warp and weft direction
7. Abrasion: ASTM D 4157 100,000 double rubs Wyzenbeek Method or ASTM D4966 100,000 double rubs Martindale
8. Stain resistant finish and acrylic backing

Samples to be submitted after award.

Padding Requirements

1. Chair/Sofa/Bench back padding materials and fabric shall comply with the BIFMA Furniture Flammability Standard, as well as the California Technical Information Bulletin 117.
2. All standard seating shall be labeled to be in compliance with California TB117.
3. Furniture must meet or exceed all ergonomic guidelines by ANSI/HFES Durability Tests. *Refer to the enclosed BIFMA Standards compliance in Attachment 1.*

Additional Tests Required (In addition to BIFMA)

Test: ASTM-E84

Tests for: Surface Burning Characteristics

Notes: Class A, B and C ratings are dependent on the burn characteristics. Panel systems require a Class A rating.

Test: Underwriters Laboratories (UL)

Tests for: Electrical Components

Notes: Powered Components must be UL listed: powered panels, task lights

Test: ASTM-E-90-83

Tests for: Airborne Sound Transmission Loss

Notes: Sound Transmission Coefficient (STC) of Acoustical Panels

Test: ASTM-C-423-84

Tests for: Sound Absorption Coefficients

Notes: Noise Reduction Coefficient (NRC) of Acoustical Panels

Standard panel fabrics must meet or exceed UL 1286 Standard for Safety of Office Furnishings tests.

Substitutions

The City may accept substitutions for items in this package, provided the substitutions conform to the aforementioned specifications and requirements, as well as blending with the established aesthetics. Substitutions will need to be approved by the City prior to procurement.

Licensing, Accreditation and Registration

The Vendor and all of its subcontractors and subconsultants (regardless of tier) shall comply with all applicable Maryland state and federal licensing, accreditation, and registration requirements and standards necessary for the performance of an agreement between the City and the Vendor Agreement.

Conformance with Laws

It shall be the responsibility of the Vendor to perform under an agreement between the City and the Vendor in conformance with the City's Procurement Regulations and all statutes, laws, codes, ordinances, regulations, rules, requirements, orders, and policies of governmental bodies.

Timeline

- RFP Open: Tuesday, December 31, 2024
- RFP Close: Monday, January 27, 2025, 7:59 AM EST
- Proposal Review: Monday, January 27, 2025 to Friday, January 31, 2025
- Interviews (if requested by City): Monday, February 3, 2025 to Friday, February 7, 2025
- Selected Vendor Announcement: February 12, 2025
- Project Completion: Substantial completion of the Project's construction is currently scheduled for April 2025. Order fulfillment should be scheduled to time with the building's substantial completion, and the City will provide responsive communication to coordinate around this date.

General Clarification and Questions

General clarifications and questions related to this RFP may be submitted in writing and emailed to JessicaJ@takomaparkmd.gov. Please include "RFP: Furniture Package" in the subject line of the email. All questions will be answered via email.

Submission Information and Deadline

The Deadline for submission of proposals is: Monday, January 27, 2025, 7:59 AM EST.

Proposals must be submitted electronically to JessicaJ@takomaparkmd.gov. The email subject line shall read “RFP LB #2024-01 with all submission requirement documents attached as a single PDF. All submittals received after the closing date and time will not be entered into the review and selection process.

A confirmation email will be sent to all applicants no later than Wednesday, January 29, 2025. If no confirmation is received within that time, please contact Jessica Jones at 301-891-7258 or via email at JessicaJ@takomaparkmd.gov to confirm that the submission was received.

Submission Requirements

Submissions must include the following information to be considered complete. Vendors are encouraged to be thorough, yet concise, and include each of the following:

1. Letter of Interest

A general statement of why the Vendor or team is interested in working with the City on this effort, with a brief narrative outlining your approach to the Project and how the work would be performed. The letter should include certification that the proposal and price will remain in effect for ninety (90) days after the proposal date.

2. Goods and Services to be Provided

A narrative description of the services to be provided to the City and the Vendor’s approach to carry out the Project Scope set forth in this RFP. The description of services should include an outline with information including a timeline for the services that would be provided and the approximate amount of time that the Vendor would spend on these services. A list of other services or additional work hours that may be provided at additional cost may be included.

3. Qualifications and Experience

The Vendor must be a professional vendor that specializes in the acquisition and sales of commercial grade furnishings. The Vendor must have successfully completed at least ten (10) comparable project orders. Please include a listing of current and past clients from the last five (5) years for which similar projects have been completed. Describe the general scope of services provided for each. A company profile, including number of years in business, and a list of all persons who will be directly or indirectly involved in the project should be included.

4. **Capacity**

Provide assurance that the Vendor is capable of providing the described goods and services to the City of Takoma Park in addition to the other responsibilities or commitments of the Vendor. Vendors should have adequate staff capacity to handle the demands of the work.

5. **Ability to Represent Takoma Park**

Vendors should be able to represent the City of Takoma Park on issues of importance to the City without significant conflicts of interest related to the Vendor's other clients or the employees of the City of Takoma Park. Identify any conflicts of interest, potential conflicts with other clients of the Vendor, or relationships with City staff.

6. **References**

Please provide at least five (5) references of clients for whom similar projects were provided, including a description of work completed, dates of service, and contact information.

8. **Price Proposal**

Provide details of the cost for the proposal, including:

- a) A lump sum fee for goods and services described, including pricing consideration for deduct alternates specified in this Request for Proposals;
- b) An itemized list of goods to be provided, based on the Furniture Specifications attachment;
- c) An estimate of the hours required to complete the project, and hourly rates required for completion;
- d) All non-labor costs expected, including telephone calls, printing, or other incidentals;
- e) A total not-to-exceed figure encompassing the entire scope; and

9. **Required Certifications**

The following certifications must be submitted with the proposal:

- a) Form A: Qualification and Certification Statement;
- b) Form B: Certification of Non-Involvement in the Nuclear Weapons Industry;
- c) Form C: Living Wage Requirements Certification; and
- d) Form D: Metropolitan Washington Council of Governments Rider Clause

Evaluation and Award Criteria

A contract award will be made on the basis of a recommendation made by an evaluation panel comprised of City staff, and authorized by formal action of the Takoma Park City Council. The evaluation panel may request an interview with any or all responders to this RFP before making a recommendation.

Proposals will be evaluated and ranked based on the following criteria:

- a) Experience and qualifications of the Vendor;
- b) Responsiveness and understanding of the scope of services;
- c) Prior experience working with projects of similar scopes and in similar settings;
- d) Qualifications and experience of personnel to be assigned to the project;
- e) Client references; and
- f) Cost.

The selection of a Vendor shall be made without regard to race, color, sex, age, religion, familial status, sexual orientation, gender identity, national origin, physical or mental condition, HIV status, military service, or political affiliation. The City of Takoma Park is an Equal Opportunity Employer and encourages proposals from minority and woman-owned businesses. Additional information may be requested prior to final selection.

General Conditions

The General Conditions set out below apply to all formal solicitations for the City of Takoma Park, Maryland. Proposers are responsible for informing themselves of these requirements prior to submission of proposals. The term “bid” and “bidder” as used in these General Conditions shall include the term “proposal” and “offeror” or “respondent.” A sample of the terms applicable to any contract resulting from this RFP are attached hereto as Exhibit A.

Receipt of Proposals

Proposals or amendments received after the time specified below for Opening will not be considered.

Properly marked proposals attached as a PDF that are received prior to the specified time of the Opening will be kept unopened until the bid Opening date and time.

No liability shall be attached to the City or appointed City representative for the premature opening of an improperly addressed or improperly identified bid.

Opening of Proposals

Bid opening will occur at 5:00 p.m. on Tuesday, December 31, 2024 in the offices of the City of Takoma Park.

Unless otherwise specified by the City, all proposals submitted shall be binding for City acceptance for 90 calendar days from the date of the opening of proposals.

Award or Rejection of Proposals

A contract shall be awarded to a responsive and responsible firm or individual. The City reserves the right, in its sole discretion, to: 1) accept a proposal in part or as a whole; 2) reject any or all proposals; 3) re-advertise the Request for Proposals; 4) waive any required information set forth in this Request for Proposals; 5) select a bid and make a contract award which best serves the most effective and efficient performance of the contract services and the interests of the City; and/or 6) reject any and all proposals that comply with these Request for Proposals specifications, or to accept a higher bid proposal that complies, provided that, in the judgment of the City, the services or items offered under the higher bid proposal have additional values or functions justifying the difference in price.

The City reserves the right to personally interview bidders and to inspect the bidder’s place of business, inventory, vehicles, supplies and equipment, contact references and inspect past projects prior to making a bid award.

General Conditions

The City also reserves the right, in its sole discretion, to reject the proposal of a bidder who has previously failed to satisfactorily perform or to timely complete a contract of a similar nature (whether for the City or for a different jurisdiction or entity) or a proposal of a bidder who, upon investigation, is not in position to perform the contract.

A written notice of the award (or acceptance of the bid) will be provided to the successful bidder within the specified acceptance period.

Changes in Specifications

The City may, during the proposal period, advise prospective respondents by bulletin or addenda of changes in information contained in the Request for Proposals. All such changes shall be deemed a part of the RFP, and shall become part of the information contained in the RFP as originally issued.

Subcontractors

Bidders may not assign or sublet the contract services or any part thereof without the prior written consent of the City Manager, or his or her duly appointed representative. Bidders must request approval in writing for any such assignment or subcontracting, including the name of such assignee or subcontractor(s) he or she intends to use, the specific services or materials to be furnished by such assignee or subcontractor, the assignee or subcontractor's place of business, and other information as the City Manager may require.

Compliance with Specifications

Bidders shall abide by and comply with the true intent of the Project Scope detailed in the Request for Proposals and not take advantage of any unintentional error or omission.

Payment

Invoice for payment must be submitted in duplicate. An original and one copy shall be forwarded to the City, payment for which will be made only upon acceptance of the services or items represented by the invoice. Payment terms are net 30 unless special arrangements have been established.

Bidders shall not legally or equitably assign any of the monies payable under the contract, or its claim thereto, unless by and with the written consent of the City Manager.

Indemnification and Insurance

The bidder is responsible for any loss, personal injury, death, property damages, and any other damages of every name and description that may be done or suffered by reason of bidder's negligence or failure to perform any contractual obligations. The bidder shall indemnify and save harmless the City of Takoma Park, its employees, officials, and agents, from and against all losses, liabilities, claims, demands, damages, suits, costs and expenses of any kind, including

General Conditions

attorney's fees and litigation expenses, suffered or incurred due to the bidder's negligence, tortuous act or omission, or failure to perform any of its contractual obligations.

The bidder must obtain at its own cost and expense, and keep in force and effect during the term of the contract with the City for the contract work, including all extensions and renewals, the insurance specified below, with an insurance company licensed or qualified to do business in the state of Maryland. A certificate of insurance must be submitted to the City prior to the commencement of any work under the contract and prior to any contract modification extending the term of the contract, as evidence of compliance with this provision. The City of Takoma Park must be named as an additional insured on all liability policies. A minimum of thirty (30) days written notice to the City of cancellation or material change in any of the policies is required. In no event may the insurance coverage be less than that shown below, unless the requirements of this section are waived, in whole or in part, in writing by the City Manager.

<u>Coverage</u>	<u>Amount or Limits</u>
Workers Compensation (for bidders with employees)	MD Statutory Limits
Commercial General Liability <i>(Minimum combined single limit for bodily injury and property damage per occurrence, including contractual liability, premises and operations, and independent contractors.)</i>	\$1,000,000
Minimum Automobile Liability <i>(Including owned, hired and non-owned automobiles.)</i>	
Bodily injury, each occurrence	\$300,000
Bodily injury, each person	\$100,000
Property damage, each occurrence	\$300,000
Professional Liability <i>(For errors, omission, and negligent acts, per claim and Aggregate, with one year discovery period and maximum deductible of \$25,000)</i>	\$1,000,000

Bidder's Certification of Noninvolvement in the Nuclear Weapons Industry

In order to comply with the provisions of Takoma Park Code Chapter 14.04, Nuclear-Free Zone, section 14.04.060.C, bidders must certify, by a notarized statement, that the bidder is not knowingly or intentionally a nuclear weapons producer.

Living Wage Requirement

This Request for Proposals is subject to the City of Takoma Park's living wage requirement for service contracts. The "Living Wage Requirements Certification" must be completed and

General Conditions

submitted with your proposal. If you fail to submit and complete the required material information on the Living Wage Requirements Certification, then your proposal is unacceptable under City of Takoma Park law and will be rejected.

The current mandatory living wage rate, payable by a contractor and any subcontractor to employees under the City's living wage law, is \$17.05 per hour through June 30, 2024. The living wage rate is adjusted as of July 1 of each year to reflect the most current Montgomery County living wage rate and shall be applicable to any contract awarded thereafter until the date of the next adjustment. Notice of adjustments to the living wage rate can be found on the City's website (www.takomaparkmd.gov). Also, the City's living wage law—Takoma Park Code § 7.08.150 et. seq. is available at the same website.

Rejection of Proposals

The City of Takoma Park has the right, in its sole and absolute discretion, to reject any and all proposals in the best interests of the City, to accept or reject any part of any proposal, to waive any technical or formal defect therein, and to elect not to proceed with the process set forth in this Request for Proposals.

Conflict of Interest

No employee or officer of the City, or his or her immediate family member, shall be permitted to any share or part of this contract or to any benefit that may arise from this contract.

City Form Contract

CONTRACT FOR _____

[CONTRACTOR]
CITY OF TAKOMA PARK, MARYLAND

THIS AGREEMENT, hereinafter referred to as “Agreement,” is made this ____ day of _____ 202__, by and between the **CITY OF TAKOMA PARK**, a municipal corporation of the State of Maryland, located at , 7500 Maple Avenue, Takoma Park, MD 20912, hereinafter referred to as “the City,” and [CONTRACTOR], a [description of Contractor’s type of business] located at , hereinafter referred to as “Contractor,” and both collectively referred to hereinafter as “the Parties.”

RECITALS

WHEREAS, [Insert multiple WHEREAS clauses providing the factual background underlying the Agreement, including any City solicitation of bids/proposals].

WHEREAS, the City desires to retain Contractor to assist it in [insert a description of the activities required], hereinafter referred to as the “Project;” and

WHEREAS, the Mayor and City Council, by enacting Ordinance No. 202__, have authorized the City Manager to enter into this Agreement in pursuit of the Project. [This

WHEREAS clause may be removed if the Council is not required to authorize the Agreement, under Chapter 7.04 of the Takoma Park Code.]

TERMS

NOW, THEREFORE, in consideration of the mutual promises of the Parties, and other good and valuable consideration, the receipt, adequacy, and sufficiency of which are hereby acknowledged, the Parties agree as follows:

SECTION 1. SCOPE OF SERVICES

1.1. During the term of this Agreement, Contractor agrees that it will have the following responsibilities with respect to the Project:

1.1.1. [Insert subsections concerning the activities required under the Project]

1.2. The Project shall also include all other work as reasonably and additionally required by the City and agreed to by Contractor. Any such work shall be reduced to written form

Exhibit A: City Form Contract

and will require the Parties to execute a modification to this Agreement as set forth in Section 5 of this Agreement.

SECTION 2. PERIOD OF PERFORMANCE

2.1. The effective term for this Agreement is for _____, commencing upon the execution of this Agreement.

2.2. By agreement of the Parties, this Agreement may be renewed or extended for up to ____ (____) additional one-year terms following the expiration of the initial term of this Agreement. Continuation of Contractor’s performance under this Agreement beyond the initial term is contingent upon, and subject to, the appropriation of funds and encumbrance of those appropriated funds for payments under this Agreement. If funds are not appropriated and encumbered to support continued Contractor’s performance in a subsequent fiscal period, Contractor’s performance must end, without further cost to the City, upon the receipt of notice from the City. Contractor acknowledges that the City Manager has no obligation to recommend, and the City Council has no obligation to appropriate, funds for this Agreement in subsequent fiscal years. Furthermore, the City has no obligation to encumber funds to this Agreement in subsequent fiscal years, even if appropriated funds may be available. Accordingly, for each subsequent contract term, Contractor must not undertake any performance under this Agreement until Contractor receives a purchase order or contract amendment from the City that authorizes Contractor to perform work for any subsequent term of this Agreement. **[Only retain this clause if renewal or extension is permitted.]**

2.3. Contractor agrees to perform all services required by this Agreement, including any modifications agreed to by the Parties, as expeditiously as is consistent with good professional skill and best industry practice.

2.4. Time is of the essence and a critical factor in the successful execution of the terms of this Agreement.

2.5. Contractor must not commence work under this Agreement until all conditions for commencement are met, including execution of this Agreement by the Parties, compliance with insurance requirements, and the issuance of any required notice to proceed.

SECTION 3. FEE FOR SERVICES

3.1. In exchange for these good and valuable services, Contractor will receive a fee not to exceed the amount of (\$ ____). The Parties may agree to an equitable adjustment of this fee as set forth in Section 5 of this Agreement.

3.2. The compensation due to Contractor under this Agreement shall not, in any event, exceed Dollars (\$). **[Insert this provision if the Contract is not for a set amount or is for hourly or tasked-based compensation]**

3.3. The City agrees to pay the fee contemplated in Subsection 3.1 to Contractor in _____ monthly installments in the amount of _____ (\$ _____) per installment. The first monthly installment shall be paid one (1) month after the execution of this

Agreement. **[Omit this provision if the payment structure under the Agreement is for a lump sum or does not call for monthly installments.]**

3.4. The City agrees to pay the fee contemplated in Subsection 3.1 to Contractor in a lump sum, after receiving an invoice from Contractor, and to pay said invoice within ____ days of receipt. **[Remove if the pay structure of the Agreement is not for a lump sum]**

3.5. Contractor shall submit invoices to the City on a monthly basis. Invoices shall be based on time expended by Contractor to complete the tasks required under this Agreement. Invoices shall include the name of the assignment; a detailed description of the services provided; the results of the services; recommendations for future actions; the date; and the amount of time expended in providing the services. Payment will be made to Contractor within thirty (30) calendar days after the City's receipt of an invoice in a form deemed acceptable by the City. Payment will be contingent upon the City's verification that the work has been satisfactorily performed as determined by the City in its reasonable discretion. The City reserves the right to verify and approve the work represented by the invoice prior to payment of the invoice. **[Retain this provision if Section 3.3 will be utilized; omit it if an alternative payment structure is utilized.]**

3.6. No payment by the City may be made, or is due, under this Agreement, unless funds for the payment have been appropriated and encumbered by the City.

SECTION 4. PRIORITY OF DOCUMENTS

4.1. The terms and conditions of this Agreement supersede any prior proposals or agreements.

4.2. The following documents are incorporated herein by reference into and made a part of this Agreement and are enumerated herein in the order of their legal precedence in the event of a conflict in their terms: (i) ; (ii) ; (iii) ; and (iv) . In the event of a conflict in language between this Agreement and any of said documents, the terms of this Agreement shall control.

SECTION 5. CHANGES

5.1. Within the general scope of services, the City may unilaterally change the work, materials and services to be performed. The change must be in writing and within the general scope of this Agreement. In such cases, this Agreement will be modified to reflect any time or money adjustment Contractor is entitled to receive. Contractor shall not proceed with these changes (either additions or deletions) without a change order or amendment being signed by both the City and Contractor and an order or amendment stating, as applicable, the change in the work and an estimate of the time and/or cost involved in the change.

5.2. Any claim of Contractor for an adjustment in time or money due to change must be made in writing within thirty (30) days from the date the City notified Contractor of the change, or the claim is waived. Any failure to agree upon a time or money adjustment must be resolved under Section 11 of this Agreement. Contractor must proceed with the prosecution of the work as

changed, even if there is an unresolved claim. No charge for any extra work, time or material will be allowed, except as provided in this Section.

5.3. The amount of any adjustment to this Agreement under this Section shall be a negotiated cost and fee.

5.4. This Agreement may only be amended or modified by a writing signed by the Parties.

SECTION 6. NOTICES

6.1. Any required notices or other communications under this Agreement shall be in writing and personally delivered, mailed, delivered by a reputable overnight delivery service, or emailed. Notice via email may be considered official notice only if the receiving party acknowledges receipt via return email or email read receipt. Notices shall be addressed as follows:

If to Contractor: _____

Telephone: _____
E-Mail: _____

If to the City: _____

Telephone: _____
Email: _____

6.2 Either party may change the person or address for notices by written notice to the other party. Notices shall be deemed given when received or three business days after the notice is deposited, properly addressed and postage prepaid, in the United States mail or one business day after the notice is sent by a reputable overnight mail delivery service (such as, but not limited to, FedEx or UPS Next Day Delivery). For notices by email, the notice shall be deemed given on the day the recipient acknowledges receipt of the notice via return email or email read receipt. Rejection or other refusal to accept or inability to deliver because of changed address, of which no Notice has been given, shall constitute receipt of the Notice.

SECTION 7. CONTRACT ADMINISTRATION

7.1. For Contractor, _____ is Contractor's Authorized Representative for this Agreement. Contractor's Authorized Representative shall act on behalf of Contractor on all matters pertaining to this Agreement. All matters and correspondence to Contractor pertaining to this Agreement shall be directed to the attention of Contractor's Authorized Representative. Contractor's Authorized Representative shall not be changed without prior written notice to and the agreement of the City.

7.2. For the City, _____ is the City Manager’s designee for purposes of this Agreement and shall act as the Contract Administrator in connection with this Agreement. The City’s Contract Administrator may be changed at any time or from time to time by written notice to Contractor. The City’s Contract Administrator is not authorized to make determinations (as opposed to recommendations) that alter, modify, terminate or cancel the contract, interpret ambiguities in the language of this Agreement, or waive any of the City’s rights hereunder. The City’s Contract Administrator is authorized to:

- 7.2.1.** Serve as liaison between the City and Contractor;
- 7.2.2.** Give direction to Contractor to ensure satisfactory and complete performance;
- 7.2.3.** Monitor and inspect Contractor’s performance to ensure acceptable timeliness and quality;
- 7.2.4.** Serve as records custodian for this Agreement, including wage and prevailing wage requirements;
- 7.2.5.** Accept or reject Contractor’s performance;
- 7.2.6.** Furnish timely written notice of Contractor’s performance failures to the City Council, City Manager, and/or City Attorney, as appropriate;
- 7.2.7.** Approve or reject invoices for payment;
- 7.2.8.** Recommend modifications or terminations of this Agreement; and
- 7.2.9.** Issue notices to proceed and task and purchase orders.

SECTION 8. TERMINATION

8.1. This Agreement may be terminated by the City, in whole or in part, upon written notice to Contractor, when the City determines that such termination is in its best interest. A termination for convenience is effective on the date specified in the City’s written notice or, if the notice does not specify an effective date, then five (5) days after notice of termination is given by the City. Termination for convenience may entitle Contractor to payment for reasonable costs allocable to this Agreement for work or costs incurred by Contractor up to the date of termination. Contractor must not be paid compensation as a result of a termination for convenience that exceeds the amount encumbered to pay for work to be performed under this Agreement.

8.2. In the event of any of the circumstances set forth below, hereinafter referred to as “Default,” the City may terminate the Agreement, in whole or in part, and from time to time:

Exhibit A: City Form Contract

8.2.1. Any fraudulent representation in an invoice or other verification required to obtain payment under this Agreement or other dishonesty on a material matter relating to the performance of services under this Agreement; and

8.2.2. Non-performance, incomplete service or performance, failure to make satisfactory progress in the prosecution of this Agreement, failure to satisfactorily perform any part of the work required under this Agreement or to comply with any provision of this Agreement, as determined by the City's Contract Administrator in his or her sole discretion, including:

8.2.2.1. Failing to commence work when notified.

8.2.2.2. Abandoning the work. Visual inspection by the City's Contract Administrator will serve as evidence of abandonment.

8.2.2.3. Subcontracting any part of work without the City's prior approval.

8.2.2.4. Receiving two written warnings of unsatisfactory or incomplete work or any other violation of the terms of this Agreement.

8.2.2.5. Failing to adhere to the required specifications for the work required under this Agreement.

8.2.3. Contractor, or any partner, member, principal or officer of Contractor, being criminally charged with an offense involving fraud, dishonesty or moral turpitude.

8.2.4. Contractor being adjudged bankrupt or making a general assignment for the benefit of creditor or if a receiver shall be appointed on account of Contractor's insolvency.

8.2.5. Failure to adhere to the terms of applicable city, county, state, and federal laws, ordinances, regulations, or stated public policy pertaining to the subject matter and performance of this Agreement, including but not limited to the following: the payment of all applicable taxes and withholding, compliance with equal opportunity employment and labor laws, and/or failure to obtain and/or comply with the terms and conditions of any required permits.

8.3. In the event of a Default, the City shall provide Contractor with a written notice to cure the Default. The termination for Default is effective on the date specified in the City's written notice. However, if the City determines that Default contributes to the curtailment of an essential service or poses an immediate threat to life, health, or property, the City may terminate this Agreement immediately upon issuing oral or written notice to Contractor without any prior notice or opportunity to cure. In addition to any other remedies provided by law or this Agreement, Contractor must compensate the City for additional costs that foreseeably would be

incurred by the City, whether the costs are actually incurred or not, to obtain substitute performance.

8.4. Notice of any termination must be in writing, state the reason or reasons for the termination, and specify the effective date of the termination.

8.5. In the event of termination under Subsections 8.1 or 8.2, Contractor consents to the City's selection of another contractor of the City's choice to assist the City in any way in completing the Project. Contractor further agrees to cooperate and provide any information requested by the City in connection with the completion of the Project, including assignment of any contracting rights the City may require. Contractor consents to and authorizes the making of any reasonable changes to the design of the Project by the City and such other contractor as the City may desire.

8.6. Any termination of this Agreement for cause that is later deemed to be unjustified shall be deemed a termination for convenience under Subsection 8.1.

SECTION 9. CERTIFICATIONS OF CONSULTANT

9.1. Contractor, and the individual executing this Agreement on Contractor's behalf, warrants it has not employed or retained any person, partnership, corporation, or other entity, other than a bona fide employee or agent working for it, to solicit or secure this Agreement, and that it has not paid or agreed to pay any person, partnership, corporation, or other entity, other than a bona fide employee or agent, any fee or other consideration contingent on making this Agreement.

9.2. Contractor and the City represent and warrant that: (a) they have the full right and authority to enter into, execute, and perform the obligations required under this Agreement and that no pending or threatened claim or litigation known by them would have a material adverse impact on their ability to perform as required under this Agreement; (b) they have accurately identified themselves and have not provided any inaccurate information about themselves or the Project; and (c) they are entities authorized under the laws of the State of Maryland to do business within the State.

9.3. Contractor certifies that it is not now, and shall not so long as this Agreement remains in effect, engage in the development, research, testing, evaluation, production, maintenance, storage, transportation, and/or disposal of nuclear weapons or their components, or the sale of merchandise produced by companies so involved. Contractor's Certification of Non-Involvement in the Nuclear Weapons Industry is attached hereto and incorporated herein as part of this Agreement.

9.4. This Agreement is subject to the living wage requirements under *The City of Takoma Park Code*, hereinafter referred to as the "Code," Sections 7.08.150–7.08.210. Contractor and any subcontractor retained or employed on Contractor's behalf agree to pay each employee assigned to perform services under this Agreement a living wage, subject to exemptions from coverage for particular contracts set forth in Code Section 7.08.160 and for

Exhibit A: City Form Contract

particular employees as set forth in Code Section 7.08.180(F). The current living wage is Fifteen US Dollars and Forty Cents (\$15.40) per hour through June 30, 2022. The living wage rate is adjusted on July 1st of each year to reflect the most current Montgomery County living wage rate and said adjustments shall be applicable to this Agreement unless otherwise exempt.

Contractor's Living Wage Requirements Certification is attached hereto and incorporated herein as part of this Agreement.

9.5. Contractor warrants and represents: that it is the sole entity, directly or indirectly, interested in compensation for the delivery of the services and work product awarded, and to be performed under this Agreement; that any proposal upon which this Agreement was based was made without any connection with or common interest in the profits with any undisclosed persons or entity; that this Agreement is fair and made without collusion or fraud; that no employee or official of the City is directly or indirectly interested therein; that none of its officers, directors, or partners or employees directly involved in obtaining contracts or performing any part of the work required under this Agreement has been convicted of bribery, attempted bribery, or conspiracy to bribe under any federal, state, or local law.

9.6. Contractor agrees to comply with all applicable City, county, state, and federal laws and regulations regarding employment discrimination. Contractor assures the City that it does not, and agrees that it will not, discriminate in any manner on the basis of race, color, religion, ancestry, national origin, age, sex, marital status, disability, sexual orientation, and gender identity.

9.7. Contractor certifies that all information Contractor has provided or will provide to the City is true and correct and can be relied upon by the City in awarding, modifying, making payments, or taking any other action with respect to this Agreement including resolving claims and disputes. Any false or misleading information is a ground for the City to terminate this Agreement for cause and to pursue any other appropriate remedy. Contractor certifies that Contractor's accounting system conforms with generally accepted accounting principles, is sufficient to comply with Contractor's budgetary and financial obligations and is sufficient to produce reliable financial information.

SECTION 10. INDEMNIFICATION

10.1. Contractor is responsible for any loss, personal injury, death and any other damage (including incidental and consequential) arising out of, incident to, or caused by reason of Contractor's negligence, malfeasance or failure to perform any contractual obligations. Contractor must indemnify and hold the City harmless from any loss, cost, damage, and other expenses, including attorney's fees and litigation expenses, arising out of, incident to, or caused by Contractor's negligence, malfeasance or failure to perform any of its contractual obligations. If requested by the City, Contractor must defend the City in any action or suit brought against the City arising out of Contractor's negligence, errors, acts or omissions under this Agreement. The negligence or malfeasance of any agent, subcontractor or employee of Contractor is deemed to be the negligence or malfeasance of Contractor. For the purposes of this Subsection, City includes its commissions, departments, agencies, agents, officials, and employees.

10.2. If Contractor will be preparing, displaying, publicly performing, reproducing, or otherwise using, in any manner or form, any information, document, or material that is subject to a copyright, trademark, patent, or other property or privacy right, then Contractor must: obtain all necessary licenses, authorizations, and approvals related to its use; include the City in any approval, authorization, or license related to its use; and indemnify and hold harmless the City related to Contractor's alleged infringing or otherwise improper or unauthorized use. Accordingly, Contractor must protect, indemnify, and hold harmless the City from and against all liabilities, actions, damages, claims, demands, judgments, losses, costs, expenses, suits, or actions, and attorneys' fees and the costs of the defense of the City, in any suit, including appeals, based upon or arising out of any allegation of infringement, violation, unauthorized use, or conversion of any patent, copyright, trademark or trade name, license, proprietary right, or other related property or privacy interest in connection with, or as a result of, this Agreement or the performance by Contractor of any of its activities or obligations under this Agreement.

10.3. Contractor further agrees to notify the City in writing within ten (10) days of receipt of any claim or notice of any claim made by third parties against Contractor or any subcontractor regarding the services and work provided to the City under this Agreement. Contractor shall provide the City copies of all claims, notices of claims, and all pleadings and motions filed therein as the matter progresses. This Section 10 shall survive termination of this Agreement for a period of three (3) years and six (6) months after the termination date.

SECTION 11. DISPUTES

11.1. Any dispute arising under this Agreement which is not resolved by an agreement between the Parties shall be decided by the City Manager, after reasonable opportunity is provided for the Parties to provide written documentation supporting their position. Pending final resolution of a dispute, except for a termination of this Agreement by the City, Contractor must proceed diligently with performance under this Agreement. A claim must be in writing, for specific relief, or for a sum certain if the claim is for money, and any requested money or other relief must be fully supported by all relevant calculations, including cost and pricing information, records, and other information.

11.2. A decision by the City Manager or his or her designee under the dispute procedure set forth in this Section shall be a condition precedent to suit being filed by any party. For purposes of any litigation involving this Agreement, exclusive venue and jurisdiction shall be in the Circuit Court for Montgomery County, Maryland or in the District Court of Maryland sitting in Montgomery County.

SECTION 12. INSURANCE

12.1. Contractor shall obtain and maintain liability insurance coverage at Contractor's own expense. Contractor shall, within thirty (30) days of the execution of this Agreement, file with the City Manager, the Certificate from an insurance company authorized to do business in the State of Maryland and satisfactory to the City showing issuance of liability insurance coverage as set forth more fully herein below with a deductible no greater than Dollars (\$), except as specified in Subsection 12.1.3. Contractor shall be fully and completely responsible to pay the

Exhibit A: City Form Contract

deductible. Unless waived in writing by the City, the Certificate shall bear and endorsement in words exactly as follows:

The insurance company certifies that the insurance covered by this Certificate has been endorsed as follows: “The insurance company agrees that the coverage shall not be canceled, changed, allowed to lapse, or allowed to expire until thirty (30) days after notice to: ‘City Manager, City of Takoma Park, 7500 Maple Avenue, Takoma Park, MD 20912.’”

Contractor shall, throughout the term of this Agreement, maintain commercial general liability insurance, automobile liability insurance, professional liability insurance, and workers’ compensation insurance in the following amounts and shall submit an insurance certificate, as set forth above, as proof of coverage prior to the final approval of this Agreement:

12.1.1. Commercial general liability insurance with a minimum combined single limit of _____ Dollars (\$ _____) for bodily injury and property damage per occurrence including contractual liability, premises and operations, and independent contractors and products liability.

12.1.2. Automobile liability insurance with coverage for bodily injury of at least _____ Dollars (\$ _____) per person, at least _____ Dollars (\$ _____) per occurrence, and coverage for property damage of at least _____ Dollars (\$ _____) per occurrence.

12.1.3. Professional liability insurance with coverage for errors, omissions, and negligent acts, with a maximum deductible of _____ Dollars (\$ _____), of at least _____ Dollars (\$ _____) per claim in the aggregate within one year of such errors, omissions, or negligent acts being discovered. **[This provision may be omitted if the agreement is not for professional services.]**

12.1.4. Workers’ compensation insurance with coverage limits of at least Dollars (\$) per bodily injury by accident and coverage for disease of at least _____ Dollars (\$ _____) per employee and at least _____ Dollars (\$ _____) in the aggregate.

12.1.5. Cyber liability insurance in the amount of _____ Dollars (\$ _____) per claim and _____ Dollars (\$ _____) in the aggregate. **[This provision may be omitted, depending on the nature of services.]**

12.2. All policies of insurances shall be underwritten by companies licensed to do business in the State of Maryland.

12.3. The City is not responsible for any damage or loss of property or materials stored on or within facilities owned by the City. Contractor shall provide necessary insurance coverage for such losses or shall assume full risk for replacement cost for its own property or materials and that owned by its subcontractors.

12.4. Contractor shall assure that all subcontractors carry identical coverage as required by this Section 12, either individually or as an additional insured on Contractor's policies. Exceptions may be made only with the written approval of the City.

SECTION 13. SET OFF

13.1. In the event that Contractor shall owe an obligation of any type whatsoever to the City at any time during the term of this Agreement, or after the termination of the relationship created hereunder, the City shall have the right to offset any amount so owed to Contractor against any compensation due to Contractor for the provision of goods and services covered by the terms of this Agreement.

SECTION 14. APPLICABLE LAW

14.1. The laws of the State of Maryland, excluding conflicts of law rules, shall govern this Agreement as if this Agreement were made and performed entirely within the State of Maryland. Any suit to enforce the terms hereof or for damages or other relief as a consequence of the breach or alleged breach hereof shall be brought exclusively in the courts of the State of Maryland in Montgomery County, and the Parties expressly consent to the jurisdiction thereof and waive any right that they have or may have to bring such elsewhere.

SECTION 15. RECORD AND AUDIT

15.1. Contractor shall maintain books, records, documents, and other evidence directly pertinent to costs, estimates and performance under this Agreement or required under any federal, state, or local rule or regulation, in accordance with accepted professional practice, appropriate accounting procedures, and practices. The City, or any of its duly authorized representatives, shall have access to such books, records, documents, and other evidence for the purpose of inspection, audit and copying. Contractor will provide proper facilities for such access and inspection.

15.2. Records referred to under Subsection 15.1 shall be maintained and made available during performance under this Agreement and until six (6) years from the date of final completion of the Project. In addition, those records that relate to any dispute or litigation, to the settlement of claims arising out of such performance, or to costs or items to which an audit exception has been taken shall be maintained and available until six (6) years after the date upon which any such dispute, litigation, claim, or exception is resolved.

15.3. Contractor shall include the provisions of this Section 15 in every subcontract Contractor enters into relating to this Project.

15.4. All proprietary information furnished by Contractor in connection with this Agreement, but not developed as a result of work under this Agreement or under prior agreements between the City and Contractor, shall be held confidential by the City, and returned to Contractor within thirty (30) days of the completion of the services or the conclusion of litigation wherein Contractor's services were provided. All inventions, techniques, and improvements held by Contractor to be proprietary or trade secrets of Contractor prior to any use on behalf of the City, as well as all inventions, techniques, and improvements developed by Contractor, independent of the services rendered to the City under this Agreement, remain the property of Contractor.

SECTION 16. MISCELLANEOUS

16.1. The recitals above are hereby incorporated into this Agreement.

16.2. If any term or provision of this Agreement or applications thereof to any person or circumstance shall, to any extent, be invalid or unenforceable, the remaining terms and provisions of this Agreement, or the application of such term or provision to persons or circumstances other than those as to which it is held or unenforceable, shall not be affected thereby, and each term and provision of this Agreement shall be valid and enforced to the fullest extent permitted by law.

16.3. This Agreement and any rights or obligations under this Agreement may not be assigned or subcontracted by Contractor without the prior written consent of the City and any attempted assignment or subcontracting without such prior written consent shall be void.

16.4. All representations, warranties, covenants, conditions, and agreements contained herein which either are expressed as surviving the expiration and termination of this Agreement or, by their nature, are to be performed or observed, in whole or in part, after the termination or expiration of this Agreement shall survive the termination or expiration of this Agreement.

16.5. This Agreement represents the entire and integrated Agreement between the City and Contractor and supersedes all prior negotiations, representations, or agreements, either written or oral. Notwithstanding any provisions to the contrary in any contract terms or conditions unilaterally supplied by Contractor, the terms of this Agreement supersede Contractor's terms and conditions, in the event of any inconsistency.

16.6. All section and paragraph captions, marginal references, and table of contents in this Agreement are inserted only as a matter of convenience, and in no way amplify, define, limit, construe, or describe the scope or intent of this Agreement nor in any way affect this Agreement.

16.7. Neither the City nor Contractor has made any representations or promises with respect to the Project except as expressly set forth herein.

16.8. The neuter, feminine, or masculine pronoun when used herein shall each include each of the other genders and the use of the singular shall include the plural.

16.9. This Agreement shall not be construed in favor or against either party on the basis that it was drafted by the City.

16.10. The waiver of any breach of this Agreement shall not be held to be a waiver of any other or subsequent breach. Any waiver by the City of a requirement of this Agreement, including without limitation, any requirement that a notice be made in writing or that a notice or submission be made within a certain time, shall not operate as a waiver of the same or any other requirement of this Agreement, in any other circumstance or at any other time.

16.11. This Agreement shall not confer any rights or remedies upon any person other than the Parties and their respective successors and permitted assigns.

16.12. Contractor agrees to perform its services under this Agreement in such manner and at such times that the City and/or any Contractor who has work to perform, or contracts to execute, can do so without unreasonable delay. Contractor further agrees to coordinate its work under this Agreement with any and all other contractors that may be deemed necessary by the City.

16.13. Contractor shall be considered, for all purposes relating to this Agreement, an independent Contractor. Contractor agrees that it is not an agent of the City and shall have no right or authority to enter into any agreements or otherwise bind the City or create any obligations on behalf of the City with any other parties. Nothing contained in this Agreement will be construed to create the relationship of employer and employee, principal and agent, partnership or joint venture, or any other fiduciary relationship between the City and Contractor.

16.14. This Agreement may be executed electronically and in counterparts. All such counterparts will constitute the same agreement and the signature of any party to any counterpart will be deemed a signature to, and may be appended to, any other counterpart. Executed copies hereof may be delivered by email and, upon receipt, will be deemed originals and binding upon the Parties hereto, regardless of whether originals are delivered thereafter.

[The remainder of this page is intentionally left blank—signature page follows.]

Exhibit A: City Form Contract

IN WITNESS WHEREOF, the City and Contractor have executed this Agreement as of the date first written above.

Witness:

[Contractor]:

By: _____

By: _____
Date

Witness:

City of Takoma Park:

By: _____

By: _____
Date

Approved as to form and
legal sufficiency:

_____ day of _____, 2024

E.I. Cornbrooks, IV
City Attorney
City of Takoma Park

Forms

The following forms are included:

- Form A: Qualification and Certification Statement
- Form B: Non-Involvement in Nuclear Weapons Industry
- Form C: Living Wage Requirements Certification
- Form D: MWCOG Rider Clause

QUALIFICATION AND CERTIFICATION STATEMENT

NAME OF ENTITY _____

Business Address: _____

Telephone Number: _____ Fax: _____

Web Site: _____

AUTHORIZED REPRESENTATIVE

Name: _____

Title: _____

Telephone Number (office and cell): _____

E-mail: _____

ORGANIZATIONAL STRUCTURE

Identify the legal structure of the entity responding to the Request for Proposals and include requested information with this submission.

_____ A.1. A corporation incorporated under the laws of the State of Maryland, and in good standing to do business in the State of Maryland.

_____ A.2. List the name of the corporation and the names and titles of the corporation's directors and officers: _____

_____ B.1. A corporation incorporated under the laws of (insert jurisdiction)

_____ B.2. The foreign corporation is registered or qualified and in good standing to do business in the State of Maryland.

_____ B.3. List the name of the corporation and titles of the corporation's directors and officers: _____

_____ C. A sole proprietor doing business under his/her individual name. Individual name:

_____ D. A sole proprietor doing business under a trade or business name (for example, John Doe t/a Doe Masonry). List individual name and the trade or business name:

_____ E. A partnership. List the type of partnership and the names of all general partners:

_____ F.1. A limited liability company organized under the laws of the State of Maryland and authorized and in good standing to do business in the State of Maryland.

_____ F.2. List the limited liability company name and the names of all members:

_____ G.1. A limited liability company incorporated under the laws of (insert jurisdiction)

_____ G.2. The foreign limited liability company is authorized and in good standing to do business in the State of Maryland.

_____ G.3. List the foreign limited liability company name and the names of all members:

_____ H. Other (explain):

CERTIFICATION

The undersigned proposes to furnish and deliver all labor, supplies, materials, equipment, or services in accordance with specifications and stipulations contained in the Invitation for Bids or the Request for Proposals for the prices listed on the enclosed Price Proposal Sheet, if any, and/or upon the terms and conditions set forth in the proposal.

The undersigned certifies that this bid/proposal is made without any previous understanding, agreement or connection with any person, firm, or corporation submitting a bid or proposal for the same labor, supplies, materials, equipment, or services and is, in all respects fair and without collusion or fraud. The undersigned further certifies that he/she/they is/are authorized to sign for the Firm.

Name (print): _____

By: _____
Signature Date

Print name: _____

Title: _____

**CITY OF TAKOMA PARK, MARYLAND
CERTIFICATION OF NON-INVOLVEMENT IN THE
NUCLEAR WEAPONS INDUSTRY**

KNOW ALL PERSONS BY THESE PRESENTS:

Pursuant to the requirements of [Chapter 14.04](#) of the Takoma Park Code, the Takoma Park Nuclear Free Zone Act, the undersigned person, firm, corporation, limited liability company or entity hereby certifies that he/she/it is not knowingly or intentionally a nuclear weapons producer.

Note: The following definitions apply to this certification per [Section 14.04.090](#):

“Nuclear weapons producer” is any person, firm, corporation, facility, parent or subsidiary thereof or agency of the federal government engaged in the production of nuclear weapons or its components.

“Production of nuclear weapons” includes the knowing or intentional research, design, development, testing, manufacture, evaluation, maintenance, storage, transportation or disposal of nuclear weapons or their components.

“Nuclear weapon” is any device the sole purpose of which is the destruction of human life and property by an explosion resulting from the energy released by a fission or fusion reaction involving atomic nuclei.

“Component of a nuclear weapon” is any device, radioactive substance or nonradioactive substance designed knowingly and intentionally to contribute to the operation, launch, guidance, delivery or detonation of a nuclear weapon.

IN WITNESS WHEREOF, the undersigned has signed this Certification this _____ day of _____, 20 ____ .

Contractor Name: _____

By: _____ (SEAL)

Signature

Print Name & Title

State of _____, County of _____:

Subscribed and sworn to before me this ____ day of _____, 20 ____.

Notary Public

My commission expires: _____

LIVING WAGE REQUIREMENTS CERTIFICATION
(Takoma Park Code, [section 7.08.200.B](#))

Business Name: _____
Address: _____
City, State, Zip Code: _____
Phone Number: _____ Fax Number: _____
E-Mail: _____

Please specify the contact name and information of the individual designated by your business to monitor your compliance with the City’s living wage requirements, unless exempt under Section 7.08.190 (*see* item B below):

Contact Name: _____
Title: _____
Phone Number: _____ Fax: _____
E-Mail: _____

CHECK ALL APPROPRIATE LINES BELOW THAT APPLY IN THE EVENT THAT YOU ARE AWARDED THE CONTRACT AND BECOME A “CONTRACTOR.”

A. Living Wage Requirements Compliance

_____ This Contractor as a “covered employer” will comply with the requirements of the City of Takoma Park Living Wage Law (*Takoma Park Code, [Section 7.08.180 et. seq.](#)*). Contractor and its subcontractors will pay all employees who are not exempt from the wage requirements and who perform measurable work for the City related to any contract for services with the City, the living wage requirements in effect at the time of the City contract. The bid price submitted under this procurement solicitation includes sufficient funds to meet the living wage requirements.

B. Exemption Status (if applicable)

This Contractor is exempt from the living wage requirements because:

_____ The total value of the contract for services (based on the bid or proposal being submitted under this procurement solicitation) is less than \$20,000.00.

_____ A public entity.

_____ A nonprofit organization that has qualified for an exemption from federal income taxes under Section 501c(3) of the Internal Revenue Code.

_____ A contract procured through an emergency procurement, sole source procurement, or cooperative procurement.

_____ A contract for electricity, telephone, cable television, water, sewer or similar service

delivered by a regulated public utility.

_____ A contractor who is prohibited from complying with the City’s living wage requirements by the terms of an applicable federal or state program, contract, or grant requirement. **(Must specify the law and/or furnish a copy of the contract or grant.)**

C. Living Wage Requirements Reduction.

_____ This Contractor provides health insurance to the employees who will provide services to the City under the City contract and it desires to reduce its hourly rate paid under the living wage requirements by an amount equal to, or less than, the per employee hourly cost of the employer’s share of the health insurance premium. This Contractor certifies that the per employee hourly cost of the employer’s share of the premium for that health insurance is \$_____.

(Must submit supporting documentation showing the employee labor category of all employee(s) who will perform measurable work under the City contract, the hourly wage the Contractor pays for that employee labor category, the name of the health insurance provider and plan name, and the employer’s share of the monthly health insurance premium.)

Contractor Certification and Signature

Contractor submits this certification in accordance with *Takoma Park Code* [section 7.08.200.B](#). Contractor certifies, under penalties of perjury, that all of the statements and representations made in this Living Wage Requirements Certification are true and correct. Contractor and any of its subcontractors that perform services under the resultant contract with the City of Takoma Park, will comply with all applicable requirements of the City’s living wage law.

Authorized corporate, partner, member or proprietor signature: _____

Print name: _____

Title of authorized person: _____

Date: _____

Metropolitan Washington Council of Governments
Rider Clause

**USE OF CONTRACT(S) BY MEMBERS COMPRISING THE METROPOLITAN
WASHINGTON COUNCIL OF GOVERNMENTS PURCHASING OFFICERS
COMMITTEE.**

- A. If authorized by the Bidder(s), resultant contract(s) will be extended to any or all of the listed members as designated by the Bidder to purchase at contract prices in accordance with contract terms.
- B. Any member utilizing such contracts) will place its own order(s) directly with the successful Contractor. There shall be no obligation on the part of any participating member to utilize the contract(s).
- C. A negative reply will not adversely affect consideration of our bid/proposal.
- D. It is the awarded vendor's responsibility to notify the members shown below of the availability of the Contract(s).
- E. Each participating jurisdiction has the option of executing a separate contract with-the awardee. Contracts entered into with a participating jurisdiction may contain general terms and conditions unique to that jurisdiction including, by way of illustration and not limitation, clauses covering minority participation, non-discrimination, indemnification, naming the jurisdiction as an additional insured under any required Comprehensive General Liability policies, and venue. If, when preparing such a contract, the general terms and conditions of a- jurisdiction are unacceptable to the awardee, the awardee may withdraw its extension of the award to that jurisdiction
- F. The issuing jurisdiction shall not be held liable for any costs or damages, incurred by another jurisdiction as a result of any award extended to that jurisdiction by the awardee.

In pricing section of contract:

BIDDER'S AUTHORIZATION TO EXTEND CONTRACT:

<u>YES</u>	<u>NO</u>	<u>JURISDICTION</u>
_____	_____	Alexandria, Virginia
_____	_____	Alexandria Public Schools
_____	_____	Arlington County, Virginia
_____	_____	Arlington County Public Schools
_____	_____	Bowie, Maryland
_____	_____	College Park, Maryland
_____	_____	Culpepper County, Virginia
_____	_____	District of Columbia
_____	_____	District of Columbia Public Schools

- _____ District of Columbia Water & Sewer Authority
- _____ Fairfax, Virginia
- _____ Fairfax County, Virginia
- _____ Fairfax County Water Authority
- _____ Falls Church, Virginia
- _____ Fauquier County Schools & Government, Virginia
- _____ Frederick County, Maryland
- _____ Gaithersburg, Maryland
- _____ Greenbelt, Maryland
- _____ Herndon, Virginia
- _____ Loudoun County, Virginia
- _____ Manassas, Virginia
- _____ Maryland-National Capital Park & Planning Commission
- _____ Metropolitan Washington Airports Authority
- _____ Metropolitan Washington Council of Governments
- _____ Montgomery College
- _____ Montgomery County, Maryland
- _____ Montgomery County Public Schools
- _____ Prince George's County, Maryland
- _____ Prince George's County Public Schools
- _____ Prince William County, Virginia
- _____ Prince William County Public Schools
- _____ Prince William County Service Authority
- _____ Rockville, Maryland
- _____ Stafford County, Virginia
- _____ Takoma Park, Maryland
- _____ Vienna, Virginia
- _____ Washington Metropolitan Area Transit Authority
- _____ Washington Suburban Sanitary Commission

Additional Attachments

Included in this Request for Proposals are the following attachments:

- Attachment 1: BIFMA Standards compliance
- Attachment 2: Furniture specifications
- Attachment 3: Furniture plan

September 2019

BIFMA Standards Compliance Product Specification Language

Furniture products that conform to relevant BIFMA safety and performance standards have been tested to repeatable and verifiable criteria intended to simulate expected use in a commercial or other identified environment. All furniture products proposed in response to this request shall conform with the current version of the relevant standard (Note: if the most current version is less than three years old, it is acceptable to meet the prior version). A copy of the product test report or some other form of conformance verification, such as a signed affidavit, is considered acceptable conformance documentation.

For assurance in selecting increasingly sustainable furniture, conformance with the ANSI/BIFMA e3 Furniture Sustainability Standard should also be required.

Brief Description of BIFMA Standards

1. ANSI/BIFMA X5.1 Office Seating – examples include but are not limited to seating styles typically referred to as: executive/management, task/secretarial, side/guest chairs, nesting and/or folding chairs. These chairs are for single occupants and the tests are based on the 95th percentile male body weight (currently 275 lbs.).
2. ANSI/BIFMA X5.11 Large Occupant Office Seating – very similar to X5.1 except the tests are based on the 99.5th percentile male body weight (currently 400 lbs.) and the minimum seat width shall be 22 inches.
3. ANSI/BIFMA X6.1 Educational Seating – typically used for seating products that are primarily designed for use in schools (K-12) and colleges/universities. It includes chair-desks, tablet-arm products, convertible bench/tables. Three sizes of chairs based on seat height. The small and medium size chairs may be more suitable for K-6 environments catering to smaller users. The large size is based on the 95th percentile male body weight.
4. ANSI/BIFMA X5.4 Lounge and Public Seating – primarily designed for use in indoor common or shared spaces such as: waiting, reception, patient rooms, restaurant/dining/cafeteria settings, and other gathering areas. Public seating includes products with single or multiple seat units, arena folding chairs, and standard folding chairs. Tests are based on the 95th percentile male body weight.
5. BIFMA X6.4 Occasional-Use Seating – similar to X5.4 except the durability test cycles are reduced for products that may experience less frequent use or a reduced life expectation.
6. ANSI/BIFMA X5.5 Desk Products – covers commercial desks and tables, including height adjustable tables. It also offers several tests for monitor arms.
7. ANSI/SOHO S6.5 Small Office/Home Office – covers desk-type furniture primarily designed for use in small office, home office, and residential environments. These products may be completely assembled, partially assembled, or totally unassembled (i.e. Ready-to-Assemble (RTA)).

Attachment 1: BIFMA Standards compliance

BUSINESS + INSTITUTIONAL FURNITURE MANUFACTURERS ASSOCIATION
678 Front Avenue NW | Suite 150 | Grand Rapids, Michigan 49504-5368



8. ANSI/BIFMA X5.6 Panel Systems – covers the performance requirements for panel systems, screens, panel supported systems, and various hang-on components.

9. ANSI/BIFMA X5.9 Storage – provides test methods for freestanding, mobile, and wall-mounted storage units.

10. ANSI/BIFMA X7.1 Standard for Formaldehyde and TVOC Emissions – provides industry approved emissions requirements for low-emitting seating and office furniture products.

11. ANSI/BIFMA e3 Furniture Sustainability – provides measurable market-based definitions and establishes performance criteria for increasingly sustainable furniture. LEVEL is the conformance mark for furniture products that have been third-party certified to the e3 standard. A comprehensive database of certified products is at: <http://www.levelcertified.org/>. Note that all products certified to the 2019 version of e3 will have met the ANSI/BIFMA X7.1 Emissions standard as a prerequisite. Products certified to an earlier version of e3 may have voluntarily met the emissions standard. Credit 6.2.1 in the 2019 version of e3 offers up to 2 points for products that conform to the relevant safety and performance standards outlined above.

Attachment 2: Furniture specifications



Takoma Park Library
 101 Philadelphia Avenue
 Takoma Park, Maryland 20912



Furniture Specifications

FURNITURE ITEM

ITEM: C01

Task Chair

PHOTO

Image similar to product specified, see item for details



MANUFACTURER

The HON Company

QUANTITY

4

MODEL NO.

HSLVTMM.Y2.A.H.IF.UR19.TL.SB.TI

COST

\$0.00

EXTENDED COST

\$0.00

DESCRIPTION

HON, Solve Task Chair, Overall Dimensions: 27 1/4"W x 26 5/8"D x 38 7/8"H, Mid back task chair with a 4-way stretch mesh. The chair has a standard frame and an advanced synchro-tilt control, the arms are height and width adjustable, and the chair has hard casters.

FINISH / FABRIC A

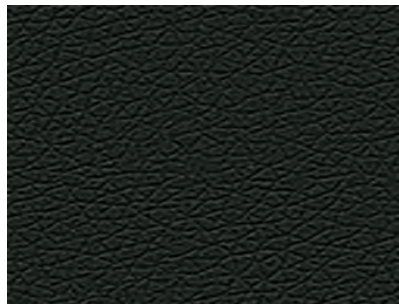
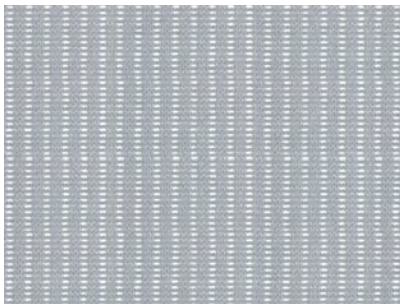
Mesh: Fog

FINISH / FABRIC B

Upholstered Seat: Contourett Black

FINISH / FABRIC C

Base: Titanium



QUANTITY/LOCATION:

1/109, 3/115



Takoma Park Library
 101 Philadelphia Avenue
 Takoma Park, Maryland 20912



Furniture Specifications

FURNITURE ITEM

ITEM: C02

Children's Chair, Cantilever

PHOTO

Image similar to product specified, see item for details



MANUFACTURER

KI, Inc.

QUANTITY

28

MODEL NO.

IWC18-NG

COST

\$0.00

EXTENDED COST

\$0.00

DESCRIPTION

KI, Intellect Wave, Overall Dimensions: 24.5"W x 24.5"D x 30.5-35.5"H, Seat Height: 18"H; The chair frames consist of 3/4" x 1/2" O.d. 14-gauge elliptical steel tubing welded to a 14-gauge steel plate. The chair is on nylon glides. The chairs shell has one-piece contoured shell are made of static-free high-impact polypropylene. The chairs shell has rolled edges for comfort and strength and a textured front and back. The shell fastens to frame with six 1/4-20 x 5/8" Torx head screws.

FINISH / FABRIC A

Shell: Blue Grey

FINISH / FABRIC B

Frame: Starlight Silver



QUANTITY/LOCATION:

28/109



Takoma Park Library
 101 Philadelphia Avenue
 Takoma Park, Maryland 20912



Furniture Specifications

FURNITURE ITEM

ITEM: C03

Modular Straight Rectangular Lounge

PHOTO

Image similar to product specified, see item for details



MANUFACTURER

KI, Inc.

QUANTITY

6

MODEL NO.

MPSQRL/CGL/FC

COST

\$0.00

EXTENDED COST

\$0.00

DESCRIPTION

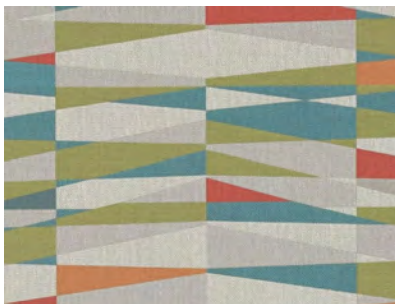
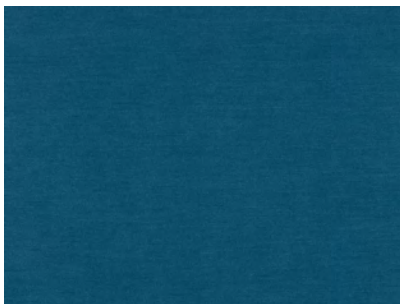
KI, My Place Rectangular Lounge, Overall Dimensions: 26"W x 26"D x 32"H, The lounge chair has contrasting fabrics and has concealed glides. The lounge chair has concealed glides. Seat frames are constructed of 3/4" laminated hardwood plywood, CNC cut. All main frame joints are nailed and glued, in addition to interlocking joinery across all stress points. Seats are removable without tools for cleaning and electrical inspection. Frame bases are coated with a black stain and sealer to seal and protect wooden frames from liquid spills. The seat base contains multiple pass-through cutouts to allow liquid spills. The seat base contains multiple pass-through cutouts to allow liquid and debris to route to the floor. Seats feature a curved clean-out space to route liquid and debris towards floor. All MyPlace Lounge units are double-needle stitched at all primary seams for lasting durability. Concealed glides are height-adjustable steel, 1/4-20 threaded with a natural color nylon bottom allowing for 3/4" of leveling. Four to five adjustable glides are used per lounge depending upon model.

FINISH / FABRIC A

Upholstered Seat: Pallas Aphrodite Nile

FINISH / FABRIC B

Upholstered Back: CF Stinson LaScalina Flow



QUANTITY/LOCATION:

6/109



Takoma Park Library
 101 Philadelphia Avenue
 Takoma Park, Maryland 20912



Furniture Specifications

FURNITURE ITEM

ITEM: C04

Modular Square Ottoman Table

PHOTO

Image similar to product specified, see item for details



MANUFACTURER

KI, Inc.

QUANTITY

3

MODEL NO.

MPTSQR/CGL/NC

COST

\$0.00

EXTENDED COST

\$0.00

DESCRIPTION

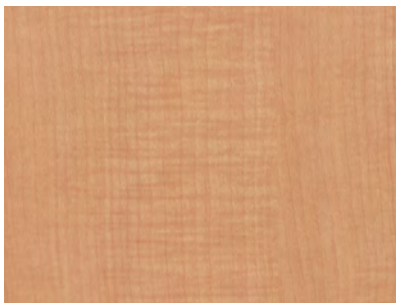
KI, My Place Square Table, Overall Dimensions: 26"W x 26"D x 18"H, The lounge chair has concealed glides. Seat frames are constructed of 3/4" laminated hardwood plywood, CNC cut. All main frame joints are nailed and glued, in addition to interlocking joinery across all stress points. Seats are removable without tools for cleaning and electrical inspection. Frame bases are coated with a black stain and sealer to seal and protect wooden frames from liquid spills. The seat base contains multiple pass-through cutouts to allow liquid spills. The seat base contains multiple pass-through cutouts to allow liquid and debris to route to the floor. Seats feature a curved clean-out space to route liquid and debris towards floor. All MyPlace Lounge units are double-needle stitched at all primary seams for lasting durability. Concealed glides are height-adjustable steel, 1/4-20 threaded with a natural color nylon bottom allowing for 3/4" of leveling. Four to five adjustable glides are used per lounge depending upon mode. The ottoman has a tabletop that is made of a high-pressure laminate surface that is glued to a 45 lb density particleboard core. The underside of the top and core is a 1/32" phenolic backer laminate.

FINISH / FABRIC A

Upholstered Seat: Pallas Aphrodite Nile

FINISH / FABRIC B

Table Laminate: Monticello Maple



QUANTITY/LOCATION:

3/109



Takoma Park Library
 101 Philadelphia Avenue
 Takoma Park, Maryland 20912



Furniture Specifications

FURNITURE ITEM
Round Ottoman

ITEM: C05

PHOTO

Image similar to product specified, see item for details



MANUFACTURER

National Office Furniture

QUANTITY

9

MODEL NO.

QN66RD18G

COST

\$0.00

EXTENDED COST

\$0.00

DESCRIPTION

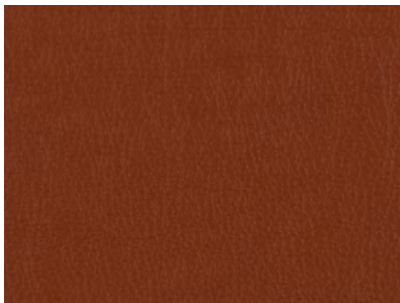
National, Whimsy Round Ottoman, Overall Dimensions: 18.5"W x 18.5"D x 17.857"H, The ottomans interior frame is constructed of plywood with tenon joints. The construction features 3 3/8" of high-grade polyurethane foam seat. The chair has contrasting fabrics. The wood legs have a non-marring nylon glide. A catalyzed topcoat that resists denting, peeling and reactions to chemicals.

FINISH / FABRIC A

Top Fabric: Pallas Sandstone Topaz

FINISH / FABRIC B

Base Fabric: Pallas Terra Topaz



QUANTITY/LOCATION:

9/109



Takoma Park Library
 101 Philadelphia Avenue
 Takoma Park, Maryland 20912



Furniture Specifications

FURNITURE ITEM
Round Ottoman

ITEM: C06

PHOTO

Image similar to product specified, see item for details



MANUFACTURER

National Office Furniture

QUANTITY

1

MODEL NO.

N66RD48G

COST

\$0.00

EXTENDED COST

\$0.00

DESCRIPTION

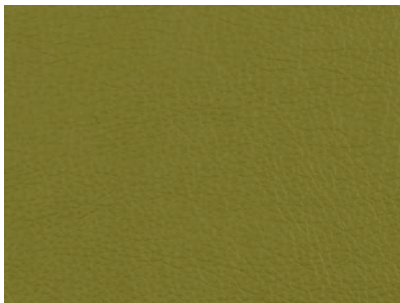
National, Whimsy Round Ottoman, Overall Dimensions: 48"W x 48"D x 16"H; The ottomans interior frame is constructed of plywood with tenon joints. The construction features 3 3/8" of high-grade polyurethane foam seat. The chair has contrasting fabrics. The wood legs have a non-marring nylon glide. A catalyzed top coat that resists denting, peeling and reactions to chemicals.

FINISH / FABRIC A

Top Fabric: Pallas Sandstone Light
 Emerald

FINISH / FABRIC B

Base Fabric: Pallas Terra Emerald



QUANTITY/LOCATION:

1/109



Takoma Park Library
 101 Philadelphia Avenue
 Takoma Park, Maryland 20912



Furniture Specifications

FURNITURE ITEM
Round Ottoman

ITEM: C07

PHOTO

Image similar to product specified, see item for details



MANUFACTURER

National Office Furniture

QUANTITY

1

MODEL NO.

N66RD36G

COST

\$0.00

EXTENDED COST

\$0.00

DESCRIPTION

National, Whimsy Round Ottoman, Overall Dimensions: 36"W x 36"D x 16"H; The ottomans interior frame is constructed of plywood with tenon joints. The construction features 3 3/8" of high-grade polyurethane foam seat. The chair has contrasting fabrics. The wood legs have a non-marring nylon glide. A catalyzed top coat that resists denting, peeling and reactions to chemicals.

FINISH / FABRIC A

Top Fabric: Pallas Aphrodite Violet

FINISH / FABRIC B

Base Fabric: Pallas Terra Amethyst



QUANTITY/LOCATION:

1/110



Takoma Park Library
 101 Philadelphia Avenue
 Takoma Park, Maryland 20912



Furniture Specifications

FURNITURE ITEM
Round Ottoman

ITEM: C08

PHOTO

Image similar to product specified, see item for details



MANUFACTURER

National Office Furniture

QUANTITY

8

MODEL NO.

QN66RD22G

COST

\$0.00

EXTENDED COST

\$0.00

DESCRIPTION

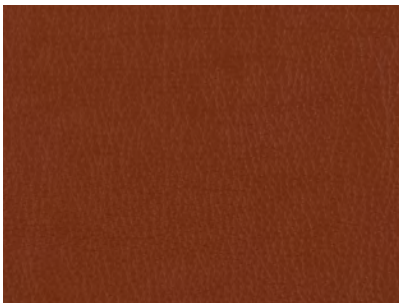
National, Whimsy Round Ottoman, Overall Dimensions: 22.75"W x 22.75"D x 17.857"H; The ottomans interior frame is constructed of plywood with tenon joints. The construction features 3 3/8" of high grade polyurethane foam seat. The chair has contrasting fabrics. The wood legs have a non-marring nylon glide. A catalyzed top coat that resists denting, peeling and reactions to chemicals.

FINISH / FABRIC A

Top Fabric: Pallas Sandstone Topaz

FINISH / FABRIC B

Base Fabric: Pallas Terra Topaz



QUANTITY/LOCATION:

6/109, 2/110



Takoma Park Library
 101 Philadelphia Avenue
 Takoma Park, Maryland 20912



Furniture Specifications

FURNITURE ITEM
Trapezoid Ottoman

ITEM: C09A

PHOTO

Image similar to product specified, see item for details



MANUFACTURER

National

QUANTITY

2

MODEL NO.

N66TZ22G

COST

\$0.00

EXTENDED COST

\$0.00

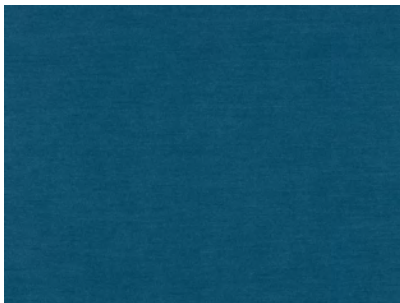
DESCRIPTION

National, Whimsy Trapezoid Ottoman, Overall Dimensions: 29.25"W x 19"D x 17.75"H; The ottomans interior frame is constructed of plywood with tenon joints. The construction features 3 3/8" of high grade polyurethane foam seat. The chair has contrasting fabrics. The wood legs have a non-marring nylon glide. A catalyzed top coat that resists denting, peeling and reactions to chemicals.

FINISH / FABRIC A

Upholstered Seat: Pallas Aphrodite

Nile



QUANTITY/LOCATION:

2/109



Takoma Park Library
 101 Philadelphia Avenue
 Takoma Park, Maryland 20912



Furniture Specifications

FURNITURE ITEM
Trapezoid Ottoman

ITEM: C09B

PHOTO

Image similar to product specified, see item for details



MANUFACTURER

National

QUANTITY

2

MODEL NO.

N66TZ22G

COST

\$0.00

EXTENDED COST

\$0.00

DESCRIPTION

National, Whimsy Trapezoid Ottoman, Overall Dimensions: 29.25"W x 19"D x 17.75"H; The ottomans interior frame is constructed of plywood with tenon joints. The construction features 3 3/8" of high grade polyurethane foam seat. The chair has contrasting fabrics. The wood legs have a non-marring nylon glide. A catalyzed top coat that resists denting, peeling and reactions to chemicals.

FINISH / FABRIC A

Upholstered Seat: Pallas Aphrodite
 Blossom



QUANTITY/LOCATION:

2/109



Takoma Park Library
 101 Philadelphia Avenue
 Takoma Park, Maryland 20912



Furniture Specifications

FURNITURE ITEM
Trapezoid Ottoman

ITEM: C09C

PHOTO

Image similar to product specified, see item for details



MANUFACTURER

National

QUANTITY

2

MODEL NO.

N66TZ22G

COST

\$0.00

EXTENDED COST

\$0.00

DESCRIPTION

National, Whimsy Trapezoid Ottoman, Overall Dimensions: 29.25"W x 19"D x 17.75"H; The ottomans interior frame is constructed of plywood with tenon joints. The construction features 3 3/8" of high grade polyurethane foam seat. The chair has contrasting fabrics. The wood legs have a non-marrying nylon glide. A catalyzed top coat that resists denting, peeling and reactions to chemicals.

FINISH / FABRIC A

Upholstered Seat: Pallas Aphrodite

Lagoon



QUANTITY/LOCATION:

2/109



Takoma Park Library
 101 Philadelphia Avenue
 Takoma Park, Maryland 20912



Furniture Specifications

FURNITURE ITEM
Trapezoid Ottoman

ITEM: C09D

PHOTO

Image similar to product specified, see item for details



MANUFACTURER

National

QUANTITY

2

MODEL NO.

N66TZ22G

COST

\$0.00

EXTENDED COST

\$0.00

DESCRIPTION

National, Whimsy Trapezoid Ottoman, Overall Dimensions: 29.25"W x 19"D x 17.75"H; The ottomans interior frame is constructed of plywood with tenon joints. The construction features 3 3/8" of high grade polyurethane foam seat. The chair has contrasting fabrics. The wood legs have a non-marrying nylon glide. A catalyzed top coat that resists denting, peeling and reactions to chemicals.

FINISH / FABRIC A

Upholstered Seat: Pallas Aphrodite

Violet



QUANTITY/LOCATION:

2/109



Takoma Park Library
 101 Philadelphia Avenue
 Takoma Park, Maryland 20912



Furniture Specifications

FURNITURE ITEM
Trapezoid Ottoman

ITEM: C09E

PHOTO

Image similar to product specified, see item for details



MANUFACTURER

National

QUANTITY

2

MODEL NO.

N66TZ22G

COST

\$0.00

EXTENDED COST

\$0.00

DESCRIPTION

National, Whimsy Trapezoid Ottoman, Overall Dimensions: 29.25"W x 19"D x 17.75"H; The ottomans interior frame is constructed of plywood with tenon joints. The construction features 3 3/8" of high grade polyurethane foam seat. The chair has contrasting fabrics. The wood legs have a non-marring nylon glide. A catalyzed top coat that resists denting, peeling and reactions to chemicals.

FINISH / FABRIC A

Upholstered Seat: Pallas Aphrodite
 Platinum



QUANTITY/LOCATION:

2/109



Takoma Park Library
 101 Philadelphia Avenue
 Takoma Park, Maryland 20912



Furniture Specifications

FURNITURE ITEM

ITEM: C10

Rocker Chair

PHOTO

Image similar to product specified, see item for details



MANUFACTURER

Allsteel

QUANTITY

3

MODEL NO.

ACEGUS

COST

\$0.00

EXTENDED COST

\$0.00

DESCRIPTION

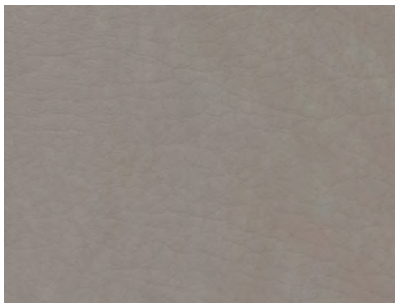
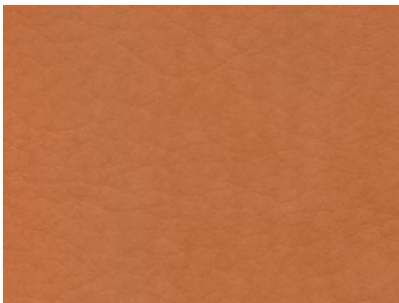
Allsteel, Rocker Chair, Overall Dimensions: 31"W x 31"D x 31"H, Seat: 29"W x 16.75"D 14.5-19.5"H; the seat is designed with motion in mind. The angled seat combined with a playful fidgeting motion is a modern hybrid of the bean bag and rocking chair. The chairs durable shell and integrated pull handle allow user control in deciding where to work or relax.

FINISH / FABRIC A

Vinyl Outer: HON Whisper Vinyl
 Luggage

FINISH / FABRIC B

Vinyl Interior: HON Whisper Vinyl
 Elephant



QUANTITY/LOCATION:

3/109



Takoma Park Library
 101 Philadelphia Avenue
 Takoma Park, Maryland 20912



Furniture Specifications

FURNITURE ITEM
4-Legged Poly Chair

ITEM: C11

PHOTO

Image similar to product specified, see item for details



MANUFACTURER

KI, Inc.

QUANTITY

43

MODEL NO.

DNY100-FR-GNL

COST

\$0.00

EXTENDED COST

\$0.00

DESCRIPTION

KI, Doni Chair, Overall Dimensions: 22.25"W x 21.5"D x 33.75"H, Seat: 19.25"W x 18.75"D x 18"H, Legs are made of 7/8"O.D. by 13-gauge tubular steel. A single ring of 1/2" diameter steel wire forms the crossmember. All joints are welded. The bottom ends of the tubes are formed to be vertical where they meet the floor, and the glides are pressed into them. Plastic glides have a swivel base and have easy-on/easy-off replaceable caps, which makes field replacement simple and efficient.

FINISH / FABRIC A

Shell: Blue Grey

FINISH / FABRIC B

Base: Starlight Silver



QUANTITY/LOCATION:

8/113 , 35/106



Takoma Park Library
 101 Philadelphia Avenue
 Takoma Park, Maryland 20912



Furniture Specifications

FURNITURE ITEM

ITEM: C12

4-Legged Upholstered Chair

PHOTO

Image similar to product specified, see item for details



MANUFACTURER

KI, Inc.

MODEL NO.

DN1300-FR-GPL

QUANTITY

42

COST

\$0.00

EXTENDED COST

\$0.00

DESCRIPTION

KI, Doni Chair, Overall Dimensions: 22.25"W x 21.5"D x 33.75"H, Seat: 19.25"W x 18.75"D x 18"H; Legs are made of 7/8"O.D. by 13-gauge tubular steel. A single ring of 1/2" diameter steel wire forms the crossmember. All joints are welded. The bottom ends of the tubes are formed to be vertical where they meet the floor, and the glides are pressed into them. Plastic glides have a swivel base and have easy-on/easy-off replaceable caps, which makes field replacement simple and efficient. Urethane foam is attached to an injection-molded polypropylene liner board, then upholstered using a draw-string process. Seat foam is molded nominal 1" thickness, and back foam is nominal 1/2" thickness. The flush-head fasteners that attach the back pad are color-matched to the polypropylene.

FINISH / FABRIC A

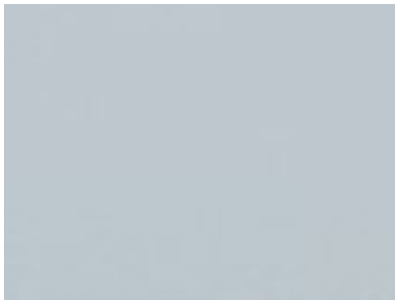
Upholstered Seat/Back: Pallas Deja
 Vu Glimpse

FINISH / FABRIC B

Shell: Cool Grey

FINISH / FABRIC C

Base: Starlight Silver



QUANTITY/LOCATION:

42/110



Takoma Park Library
 101 Philadelphia Avenue
 Takoma Park, Maryland 20912



Furniture Specifications

FURNITURE ITEM

ITEM: C13A

Sled base Upholstered Chair

PHOTO

Image similar to product specified, see item for details



MANUFACTURER

KI, Inc.

QUANTITY

15

MODEL NO.

DN3200-FR-GNG

COST

\$0.00

EXTENDED COST

\$0.00

DESCRIPTION

KI, Doni Chair, Overall Dimensions: 22.25"W x 21.5"D x 33/75"H, Seat:19.25"W x 18.75"D x18"H; Sled side frames are made from 3/4" O.D. by 13-gauge tubular steel. A single ring of 1/2" diameter steel wire forms the crossmember. All joints are welded. Urethane foam is attached to an injection-molded polypropylene liner board, then upholstered using a draw-string process. Seat foam is molded nominal 1" thickness. The flush-head fasteners that attach the back pad are color-matched to the polypropylene.

FINISH / FABRIC A

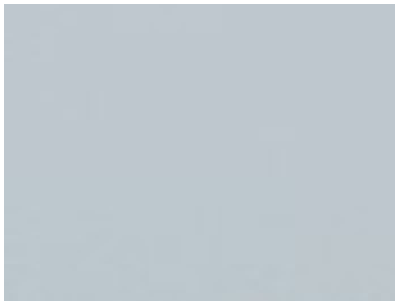
Upholstered Seat: Pallas Aphrodite Nile

FINISH / FABRIC B

Shell: Cool Grey

FINISH / FABRIC C

Base: Starlight Silver



QUANTITY/LOCATION:

3/121, 12/129



Takoma Park Library
 101 Philadelphia Avenue
 Takoma Park, Maryland 20912



Furniture Specifications

FURNITURE ITEM

ITEM: C13B

Sled base Upholstered Chair with Arms

PHOTO

Image similar to product specified, see item for details



MANUFACTURER

KI, Inc.

QUANTITY

4

MODEL NO.

DN3200-FR-GNG

COST

\$0.00

EXTENDED COST

\$0.00

DESCRIPTION

KI, Doni Chair, Overall Dimensions: 22.25"W x 21.5"D x 33/75"H, Seat:19.25"W x 18.75"D x18"H; Sled side frames are made from 3/4" O.D. by 13-gauge tubular steel. A single ring of 1/2" diameter steel wire forms the crossmember. All joints are welded. Urethane foam is attached to an injection-molded polypropylene liner board, then upholstered using a draw-string process. Seat foam is molded nominal 1" thickness. The flush-head fasteners that attach the back pad are color-matched to the polypropylene. The chair is equipped with arms. The armrests are injection-molded glass-reinforced polypropylene. Arm color matches the frame finish. The steel frame tube is inserted into a socket molded into the armrest and secured with a screw.

FINISH / FABRIC A

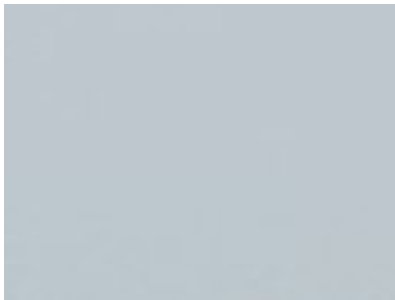
Upholstered Seat: Pallas Aphrodite Nile

FINISH / FABRIC B

Shell: Cool Grey

FINISH / FABRIC C

Base: Starlight Silver



QUANTITY/LOCATION:

4/129



Takoma Park Library
 101 Philadelphia Avenue
 Takoma Park, Maryland 20912



Furniture Specifications

FURNITURE ITEM

ITEM: C14A

4-legged Stool with Upholstered Seat

PHOTO

Image similar to product specified, see item for details



MANUFACTURER

KI, Inc.

QUANTITY

8

MODEL NO.

DN4300H30-FR-GSL

COST

\$0.00

EXTENDED COST

\$0.00

DESCRIPTION

KI, Doni Stool, Overall Dimensions: 22.5"W x 45.75"H x 21.5"D, Seat: 19.25"W x 18.75"D x 30"H; A seat ring is made of 1/2" diameter steel wire and attached to the seat with 14-gauge steel brackets. Legs are made from 3/4" diameter steel tubing, and the foot ring is formed of 1/2" diameter steel wire. All joints are welded, and the frames are finished in either baked-on electrostatically-applied 30-degree gloss epoxy powder-coat paint or bright nickel-chrome plating. Cafe stools are equipped with swivel glides in a bright steel finish. The floor contact surface is either steel or neutral color nylon. The backrest and seat are injection-molded polypropylene. The seat and backrest are joined by a pair of hidden articulation mechanisms, each consisting of a 14-gauge steel housing, twin 7-gauge levers and steel coil springs. While maintaining a one-piece shell appearance, this mechanism allows the backrest to recline up to 17 degrees of motion. Urethane foam is attached to an injection-molded polypropylene liner board, then upholstered using a draw-string process. Seat foam is molded nominal 1" thickness, and back foam is nominal 1/2" thickness. The flush-head fasteners that attach the back pad are color-matched to the polypropylene.

FINISH / FABRIC A

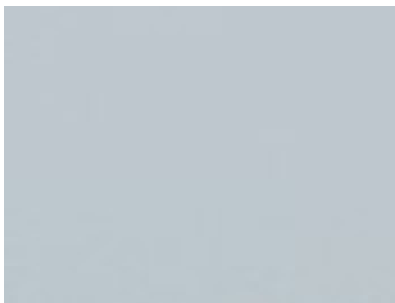
Upholstered Seat: Palla Deja Vu
 Glimpse

FINISH / FABRIC B

Shell: Cool Grey

FINISH / FABRIC C

Base: Starlight Silver



QUANTITY/LOCATION:

8/110



Takoma Park Library
 101 Philadelphia Avenue
 Takoma Park, Maryland 20912



Furniture Specifications

FURNITURE ITEM

ITEM: C14B

4-legged Stool with Upholstered Seat

PHOTO

Image similar to product specified, see item for details



MANUFACTURER

KI, Inc.

QUANTITY

4

MODEL NO.

DN4300H30-FR-GSL

COST

\$0.00

EXTENDED COST

\$0.00

DESCRIPTION

KI, Doni Stool, Overall Dimensions: 22.5"W x 45.75"H x 21.5"D, Seat: 19.25"W x 18.75"D x 30"H; A seat ring is made of 1/2" diameter steel wire and attached to the seat with 14-gauge steel brackets. Legs are made from 3/4" diameter steel tubing, and the foot ring is formed of 1/2" diameter steel wire. All joints are welded, and the frames are finished in either baked-on electrostatically-applied 30-degree gloss epoxy powder-coat paint or bright nickel-chrome plating. Cafe stools are equipped with swivel glides in a bright steel finish. The floor contact surface is either steel or neutral color nylon. The backrest and seat are injection-molded polypropylene. The seat and backrest are joined by a pair of hidden articulation mechanisms, each consisting of a 14-gauge steel housing, twin 7-gauge levers and steel coil springs. While maintaining a one-piece shell appearance, this mechanism allows the backrest to recline up to 17 degrees of motion. Urethane foam is attached to an injection-molded polypropylene liner board, then upholstered using a draw-string process. Seat foam is molded nominal 1" thickness, and back foam is nominal 1/2" thickness. The flush-head fasteners that attach the back pad are color-matched to the polypropylene.

FINISH / FABRIC A

Upholstered Seat: Pallas Aphrodite Blossom

FINISH / FABRIC B

Shell: Cool Grey

FINISH / FABRIC C

Base: Starlight Silver



QUANTITY/LOCATION:

4/130



Takoma Park Library
 101 Philadelphia Avenue
 Takoma Park, Maryland 20912



Furniture Specifications

FURNITURE ITEM

ITEM: C15

Task chair with Upholstered Seat

PHOTO

Image similar to product specified, see item for details



MANUFACTURER

KI, Inc.

QUANTITY

8

MODEL NO.

DN5200-FR-CHC

COST

\$0.00

EXTENDED COST

\$0.00

DESCRIPTION

KI, Doni Chair, Overall Dimensions: 27.5"W x 33.25-38.25"H, 27.5"D x 27.5W; Seat: 19.25"W x 18.75"W x 17.5-22.5"H, The backrest and seat are injection-molded polypropylene. The seat and backrest are joined by a pair of hidden articulation mechanisms, each consisting of a 14-gauge steel housing, twin 7-gauge levers and steel coil springs. While maintaining a one-piece shell appearance, this mechanism allows the backrest to recline up to 17-degrees of motion. Urethane foam is attached to an injection-molded polypropylene liner board, then upholstered using a draw-string process. Seat foam is molded nominal 1" thickness. The base is a 26" injection-molded glass-reinforced nylon 5-blade base. A single paddle under the seat operates the height-adjusting pneumatic cylinder. Black casters are 60 mm O.D., double-wheel, high-impact thermoplastic and are available with soft wheel surface.

FINISH / FABRIC A

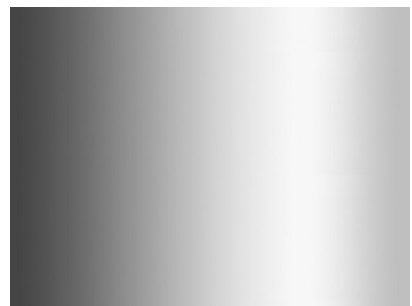
Upholstered Seat/Back: Pallas Deja
 Vu Glimpse

FINISH / FABRIC B

Shell: Cool Grey

FINISH / FABRIC C

Base: Polished Aluminum



QUANTITY/LOCATION:

4/111, 4/112



Takoma Park Library
 101 Philadelphia Avenue
 Takoma Park, Maryland 20912



Furniture Specifications

FURNITURE ITEM

ITEM: C16A

Bariatric Lounge Chair

PHOTO

Image similar to product specified, see item for details



MANUFACTURER

KI, Inc.

QUANTITY

7

MODEL NO.

ZYGNB-NAC-M1R-GPL-WPWH

COST

\$0.00

EXTENDED COST

\$0.00

DESCRIPTION

KI, Zoetry Lounge Chair, Overall Dimensions: 33"W x 23.5"D x 31.5"H, fully upholstered chair featuring a 3.5" molded foam seat cushions. The chair has 14" die-cast aluminum leg and an extruded aluminum base. The seating has base frames that are constructed of .10" thick extruded aluminum rails with die cast aluminum legs. The rails and legs are fastened together using concealed 1/4-20 steel screws. Frame is finished with powder-coat paint over all components. Zoetry guest bariatric backrests are contoured and constructed with a maximum of 2" thick molded polyurethane foam, 3.5 density, 45 lb. compression. Upholstery included double-needle stitching at all primary seams for lasting durability. Zoetry seating can be configured with optional Bryne Mini-Tap power modules.

FINISH / FABRIC A

Vinyl: Designtex Tilt Peacock

FINISH / FABRIC B

Frame: Starlight Silver



QUANTITY/LOCATION:

7/110



Takoma Park Library
 101 Philadelphia Avenue
 Takoma Park, Maryland 20912



Furniture Specifications

FURNITURE ITEM

ITEM: C16B

Bariatric Lounge Chair

PHOTO

Image similar to product specified, see item for details



MANUFACTURER

KI, Inc.

QUANTITY

2

MODEL NO.

ZYGNB-NAC-M1R-GPL-WPWH

COST

\$0.00

EXTENDED COST

\$0.00

DESCRIPTION

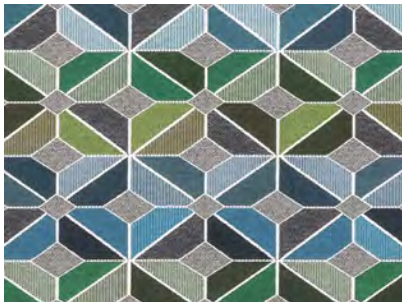
KI, Zoetry Lounge Chair, Overall Dimensions: 33"W x 23.5"D x 31.5"H, fully upholstered chair featuring a 3.5" molded foam seat cushions. The chair has 14" die-cast aluminum leg and an extruded aluminum base. The seating has base frames that are constructed of .10" thick extruded aluminum rails with die cast aluminum legs. The rails and legs are fastened together using concealed 1/4-20 steel screws. Frame is finished with powder-coat paint over all components. Zoetry guest bariatric backrests are contoured and constructed with a maximum of 2" thick molded polyurethane foam, 3.5 density, 45 lb. compression. Upholstery included double-needle stitching at all primary seams for lasting durability. Zoetry seating can be configured with optional Bryne Mini-Tap power modules.

FINISH / FABRIC A

Vinyl: ArcCom Ceramica Spring #1

FINISH / FABRIC B

Frame: Starlight Silver



QUANTITY/LOCATION:

.2/113



Takoma Park Library
 101 Philadelphia Avenue
 Takoma Park, Maryland 20912



Furniture Specifications

FURNITURE ITEM

ITEM: C16C

Bariatric Lounge Chair

PHOTO

Image similar to product specified, see item for details



MANUFACTURER

KI, Inc.

QUANTITY

2

MODEL NO.

ZYGNB-NAC-M1R-GPL-WPWH

COST

\$0.00

EXTENDED COST

\$0.00

DESCRIPTION

KI, Zoetry Lounge Chair, Overall Dimensions: 33"W x 23.5"D x 31.5"H, fully upholstered chair featuring a 3.5" molded foam seat cushions. The chair has 14" die-cast aluminum leg and an extruded aluminum base. The seating has base frames that are constructed of .10" thick extruded aluminum rails with die cast aluminum legs. The rails and legs are fastened together using concealed 1/4-20 steel screws. Frame is finished with powder-coat paint over all components. Zoetry guest bariatric backrests are contoured and constructed with a maximum of 2" thick molded polyurethane foam, 3.5 density, 45 lb. compression. Upholstery included double-needle stitching at all primary seams for lasting durability. Zoetry seating can be configured with optional Bryne Mini-Tap power modules.

FINISH / FABRIC A

Vinyl: Momentum Jackpot Payout

FINISH / FABRIC B

Frame: Starlight Silver



QUANTITY/LOCATION:

2/129



Takoma Park Library
 101 Philadelphia Avenue
 Takoma Park, Maryland 20912



Furniture Specifications

FURNITURE ITEM
4-Legged Café Stool

ITEM: C17

PHOTO

Image similar to product specified, see item for details



MANUFACTURER

KI, Inc.

QUANTITY

3

MODEL NO.

ALLSNAU-30-NFR-N

COST

\$0.00

EXTENDED COST

\$0.00

DESCRIPTION

KI, Apply Stool, Overall Dimensions: 18.75"W x 23.75"D x 36"H, one-piece contoured wood shell is constructed of formed plywood, .460"-.480" thick, 7-ply Maple and Poplar construction. The mold-formed seat and back provide for comfort and strength. Top/bottom and front/back surfaces are vertical grade postforming, product type 335, high-pressure laminate thickness of 0.28". Standard finish is #30 or #60 with a sanded edge with tung oil finish. The wood shell is supported by four plywood circular disks and 1/4-20 T-nuts bonded with construction-grade adhesive and fastened to a variety of base structures with four 1/4-20 x 1/2" thread-locking screws. The chair perimeter is designed such that it provides a feature to support backpacks or courier bags. Cafe stool has a low-back shell. Legs are formed from 3/4" O.D. by 13-gauge tubular steel. The seat plate is formed from 12-gauge steel and reinforced with 7/16" diameter wire crossmembers. All joints are welded. The frames are finished in either baked-on electrostatically-applied 30 degree gloss epoxy powder-coat paint, or bright nickel-chrome plating. An injection-molded polypropylene shroud finishes the underside of the assembly. Stool frames have an added foot ring made of 1/2" diameter steel wire. Urethane foam is attached to a formed poly upholstery liner, then upholstered using a drawstring process. The foam is a nominal 1/2" thickness. The pad assembly is attached to the shell using #10-24 screws, engaging the plastic bosses in the liner.

FINISH / FABRIC A

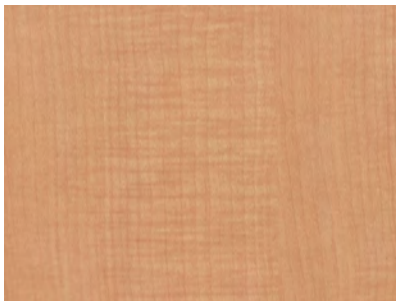
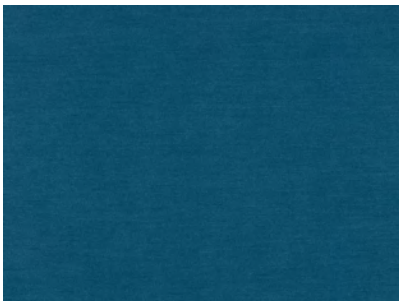
Upholstered Seat: Pallas Aphrodite Nile

FINISH / FABRIC B

Shell: Monticello Maple

FINISH / FABRIC C

Base: Starlight Silver



QUANTITY/LOCATION:

3/113



Takoma Park Library
 101 Philadelphia Avenue
 Takoma Park, Maryland 20912



Furniture Specifications

FURNITURE ITEM
Bariatric Loveseat

ITEM: C18

PHOTO

Image similar to product specified, see item for details



MANUFACTURER

KI, Inc.

QUANTITY

1

MODEL NO.

ZYGNCC-NAC-M1R-GPL-WPWH

COST

\$0.00

EXTENDED COST

\$0.00

DESCRIPTION

KI, Zoetry Loveseat, Overall Dimensions: 61.75"W x 23.5"D x 31.5"H, fully upholstered loveseat featuring a 3.5" molded foam seat cushions. The hair has 14" die-cast aluminum leg and an extruded aluminum base. fully upholstered chair featuring a 3.5" molded foam seat cushions. The chair has 14" die-cast aluminum leg and an extruded aluminum base. The seating has base frames that are constructed of .10" thick extruded aluminum rails with die cast aluminum legs. The rails and legs are fastened together using concealed 1/4-20 steel screws. Frame is finished with powder-coat paint over all components. Zoetry guest bariatric backrests are contoured and constructed with a maximum of 2" thick molded polyurethane foam, 3.5 density, 45 lb. compression. Upholstery included double-needle stitching at all primary seams for lasting durability. Zoetry seating can be configured with optional Bryne Mini-Tap power modules.

FINISH / FABRIC A

Vinyl: Momentum Jackpot Payout

FINISH / FABRIC B

Frame: Starlight Silver



QUANTITY/LOCATION:

1/129



Takoma Park Library
 101 Philadelphia Avenue
 Takoma Park, Maryland 20912



Furniture Specifications

FURNITURE ITEM

ITEM: C19

Stackable Chair with Upholstered Seat

PHOTO

Image similar to product specified, see item for details



MANUFACTURER

KI, Inc.

MODEL NO.

DN2211-NFR-CHC

QUANTITY

16

COST

\$0.00

EXTENDED COST

\$0.00

DESCRIPTION

KI, Doni Chair, Overall Dimensions: 23.25"W x 22.125"D x 33.75"H, Seat: 19.25"W x 18.75"D x 18"H, Legs are made from 7/8" O.D. by 13-gauge tubular steel. A single ring of 1/2" diameter steel wire forms the crossmember. All joints are welded. Casters are 50 mm O.D., double-wheel high-impact thermoplastic, available with hard or soft wheel surface. Urethane foam is attached to an injection-molded polypropylene liner board, then upholstered using a draw-string process. Seat foam is molded nominal 1" thickness.

FINISH / FABRIC A

Upholstered Seat: Pallas Aphrodite Blossom



FINISH / FABRIC B

Shell: Cool Grey



FINISH / FABRIC C

Base: Starlight Silver



QUANTITY/LOCATION:

6/119, 10/130



Takoma Park Library
 101 Philadelphia Avenue
 Takoma Park, Maryland 20912



Furniture Specifications

FURNITURE ITEM

ITEM: C20A

Lounge Seat with Left Arm

PHOTO

Image similar to product specified, see item for details



MANUFACTURER

KI, Inc.

QUANTITY

2

MODEL NO.

MYNL/NC-MNCH-NGL-NP-HWG-NMB

COST

\$0.00

EXTENDED COST

\$0.00

DESCRIPTION

KI, MyWay Lounge Seat, Overall Dimensions: 33"W x 33"D x 29.5"H, Arms: 4.25"W 21"H, Frames are Arms are constructed of 6/4 lumber kiln dried to a moisture content of six to eight percent and laminated hardwood plywood 3/4" in thickness. All mainframe joints are doweled or interlocked and glued. Stress points are further reinforced with the use of glued and screwed corner blocks. The seat and back are sprung with stretch webbing stapled into position and covered with a layer of FLW (reinforced non-woven fiber sheet.)Tight seats and backs are filled with a layer of 4" polyurethane foam with a density of 2.5 and a compression of 35 pounds. This foam is covered with a layer of 1/4" super soft foam. Arm tops are 1 1/2" thick polyurethane foam with a density of 4.6 and compression of 150 lb. 1/4" polyurethane foam is around the entire arm and has a 1.5 density and 45-pound compression. Sled bases are 1"O.D. x 16-gauge round steel tubing welded to a 14-gauge steel mounting plate. Bases are secured to the lounge frame with #10 x 1 1/2" steel pan head wood screws. The base has a powder-coat paint finish.

FINISH / FABRIC A

Vinyl: CF Stinson Polygon Mojave

FINISH / FABRIC B

Frame: Starlight Silver



QUANTITY/LOCATION:

2/130



Takoma Park Library
 101 Philadelphia Avenue
 Takoma Park, Maryland 20912



Furniture Specifications

FURNITURE ITEM

ITEM: C20B

Lounge Seat with Right Arm

PHOTO

Image similar to product specified, see item for details



MANUFACTURER

KI, Inc.

QUANTITY

2

MODEL NO.

MYLN/NC-MNCH-NGL-NP-HWG-NMB

COST

\$0.00

EXTENDED COST

\$0.00

DESCRIPTION

KI, MyWay Lounge Seat, Overall Dimensions: 33"W x 33"D x 29.5"H, Arms: 4.25"W 21"H, Frames are Arms are constructed of 6/4 lumber kiln dried to a moisture content of six to eight percent and laminated hardwood plywood 3/4" in thickness. All mainframe joints are doweled or interlocked and glued. Stress points are further reinforced with the use of glued and screwed corner blocks. The seat and back are sprung with stretch webbing stapled into position and covered with a layer of FLW (reinforced non-woven fiber sheet.)Tight seats and backs are filled with a layer of 4" polyurethane foam with a density of 2.5 and a compression of 35 pounds. This foam is covered with a layer of 1/4" super soft foam. Arm tops are 1 1/2" thick polyurethane foam with a density of 4.6 and compression of 150 lb. 1/4" polyurethane foam is around the entire arm and has a 1.5 density and 45-pound compression. Sled bases are 1"O.D. x 16-gauge round steel tubing welded to a 14-gauge steel mounting plate. Bases are secured to the lounge frame with #10 x 1 1/2" steel pan head wood screws. The base has a powder-coat paint finish.

FINISH / FABRIC A

Vinyl: CF Stinson Polygon Mojave

FINISH / FABRIC B

Frame: Starlight Silver



QUANTITY/LOCATION:

2/130



Takoma Park Library
 101 Philadelphia Avenue
 Takoma Park, Maryland 20912



Furniture Specifications

FURNITURE ITEM

ITEM: C21

Sled base Upholstered Chair and Back

PHOTO

Image similar to product specified, see item for details



MANUFACTURER

KI, Inc.

QUANTITY

34

MODEL NO.

DN3300-NFR-GPL

COST

\$0.00

EXTENDED COST

\$0.00

DESCRIPTION

KI, Doni Chair, Overall Dimensions: 22.25"W x 21.5"D x 33/75"H, Seat:19.25"W x 18.75"D x18"H; Sled side frames are made from 3/4" O.D. by 13-gauge tubular steel. A single ring of 1/2" diameter steel wire forms the crossmember. All joints are welded. Urethane foam is attached to an injection-molded polypropylene liner board, then upholstered using a draw-string process. Seat foam is molded nominal 1" thickness, and back foal is nominal 1/2" thickness. The flush-head fasteners that attach the back pad are color-matched to the polypropylene.

FINISH / FABRIC A

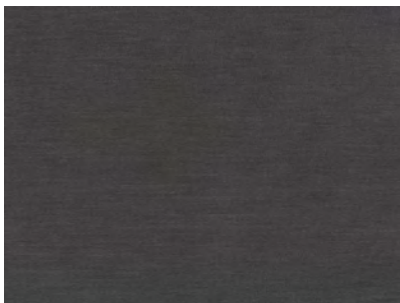
Upholstered Seat: Aphrodite Storm
 Cloud

FINISH / FABRIC B

Shell: Blue Grey

FINISH / FABRIC C

Base: Starlight Silver



QUANTITY/LOCATION:

12/126, 13/127, 2/128, 7/131



Takoma Park Library
 101 Philadelphia Avenue
 Takoma Park, Maryland 20912



Furniture Specifications

FURNITURE ITEM

ITEM: C22

Task chair with Upholstered Seat

PHOTO

Image similar to product specified, see item for details



MANUFACTURER

Humanscale

QUANTITY

22

MODEL NO.

L113BM14CF56XFSHNSC

COST

\$0.00

EXTENDED COST

\$0.00

DESCRIPTION

Humanscale, Liberty Task Chair, Overall Dimensions: 25.5" in W x 25" D x 38.5-43.3"H, Seat Pan Depth: 25", Seat Height: 17.7-22.5", Seat: 21"W x 16.5-18.75"D, The chair comes with a self-adjusting recline, pivoting backrest, form-sensing mesh back, a contoured seat cushion and adjustable armrests. The chair is equipped with casters that are 3" tall and work on dual surfaces.

FINISH / FABRIC A

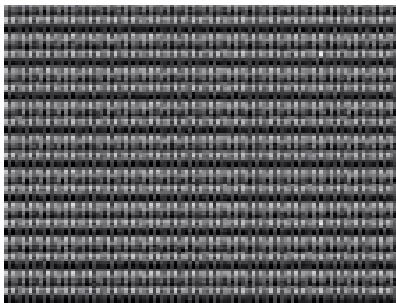
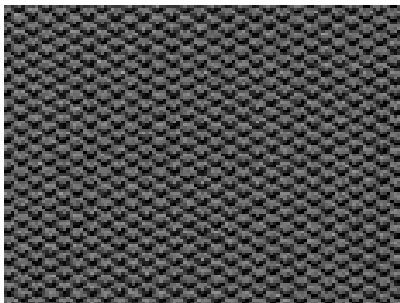
Upholstered Seat: Fourtis FT Granite

FINISH / FABRIC B

Mesh: Monofilament Stripe (M)
 Carbon

FINISH / FABRIC C

Base/Trim: Silver with Silver Trim (V)



QUANTITY/LOCATION:

10/116, 1/118, 1/120, 6/R101, 1/R102, 1/R103, 1/R104, 1/R105



Takoma Park Library
 101 Philadelphia Avenue
 Takoma Park, Maryland 20912



Furniture Specifications

FURNITURE ITEM

ITEM: C23

Guest chair with Upholstered Seat

PHOTO

Image similar to product specified, see item for details



MANUFACTURER

Humanscale

QUANTITY

4

MODEL NO.

L406VM11CF12NC

COST

\$0.00

EXTENDED COST

\$0.00

DESCRIPTION

Humanscale, Liberty Side Chair, Overall Dimensions: 26.5"W x 36.75", 18.4" Seat Height , The chair has a backrest features that use the form-sensing mesh technology. The backrest pivots for additional comfort, and the seat has a frameless front edge. The chair has a steel frame.

FINISH / FABRIC A

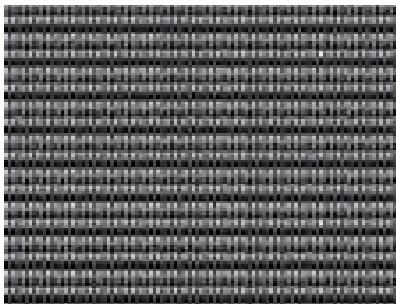
Upholstered Seat: Corde 4 (CF)
 Graphite

FINISH / FABRIC B

Mesh: Monofilament Stripe (M)
 Carbon

FINISH / FABRIC C

Base/Trim: Silver with Silver Trim (V)



QUANTITY/LOCATION:

1/R102, 1/R103, 1/R104, 1/R105



Takoma Park Library
 101 Philadelphia Avenue
 Takoma Park, Maryland 20912



Furniture Specifications

FURNITURE ITEM

ITEM: C24

Guest chair no arms with Upholstered Seat

PHOTO

Image similar to product specified, see item for details



MANUFACTURER

Humanscale

QUANTITY

3

MODEL NO.

L400VM11CF12NC

COST

\$0.00

EXTENDED COST

\$0.00

DESCRIPTION

Humanscale, Liberty Armless Side Chair, Overall Dimensions: 26.5"W x 36.75", 18.4" Seat Height , The chair has a backrest features that use the form-sensing mesh technology. The backrest pivots for additional comfort, and the seat has a frameless front edge. The chair has a steel frame.

FINISH / FABRIC A

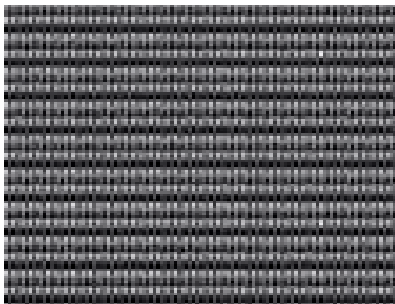
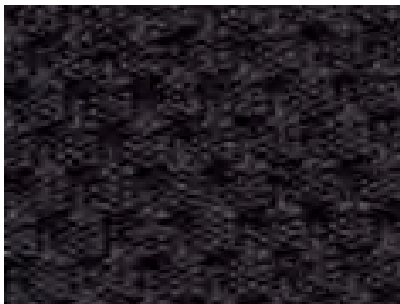
Upholstered Seat: Corde 4 (CF)
 Graphite

FINISH / FABRIC B

Mesh: Monofilament Stripe (M)
 Carbon

FINISH / FABRIC C

Base/Trim: Silver with Silver Trim (V)



QUANTITY/LOCATION:

2/118, 1/120



Takoma Park Library
 101 Philadelphia Avenue
 Takoma Park, Maryland 20912



Furniture Specifications

FURNITURE ITEM
Curve Ottoman

ITEM: C25

PHOTO

Image similar to product specified, see item for details



MANUFACTURER

KI, Inc.

QUANTITY

4

MODEL NO.

MPCI45

COST

\$0.00

EXTENDED COST

\$0.00

DESCRIPTION

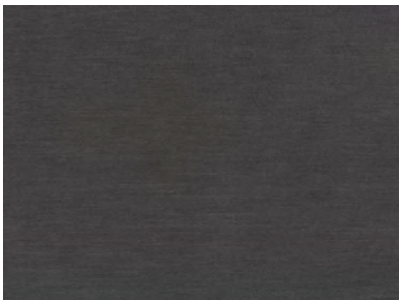
KI, MyPlace 45 Degree Curve Inside Mid Back Seat, Overall Dimensions: Back Depth: 26", Seat Depth: 19", Overall Depth: 28", Overall Width: 41-1/2", Overall Height:32", Seat Height: 18", Seat Width: 21"; The seat and backrest frames are constructed of 3/4" laminated hardwood plywood. The lounge seat uses a high-density foam . The foam is 2.5 density, 45 lb compression with 2-1/2" thick seat topped with 1/2" of 2.6 density 80 lb compression foam. The lounge seat comes with concealed glides. The glides are height adjustable steel, 1/4-20 threaded with a natural color nylon bottom.

FINISH / FABRIC A

Back: Pallas Aphrodite Storm Cloud

FINISH / FABRIC B

Seat: Pallas Terra Emerald



QUANTITY/LOCATION:

4/113



Takoma Park Library
 101 Philadelphia Avenue
 Takoma Park, Maryland 20912



Furniture Specifications

FURNITURE ITEM
Round Ottoman

ITEM: C26

PHOTO

Image similar to product specified, see item for details



MANUFACTURER

KI, Inc.

QUANTITY

2

MODEL NO.

MP18R

COST

\$0.00

EXTENDED COST

\$0.00

DESCRIPTION

KI, MyPlace Round Ottoman, Overall Dimensions: Diameter: 18", Overall Height: 18", Seat Height:18"; The seat is constructed of 3/4" laminated hardwood plywood. The ottoman uses a high-density foam for firm support. The foam is 2.6 density, 80 lb compression with 2" thick seat. 3/4" thick foam covers all exposed sides. The ottoman comes with concealed glides that are height-adjustable steel, 1/4-20 threaded with a natural color nylon bottom.

FINISH / FABRIC A

Seat: Pallas Aphrodite Violet

FINISH / FABRIC B

Base Fabric: Pallas Terra Amethyst



QUANTITY/LOCATION:

2/113



Takoma Park Library
 101 Philadelphia Avenue
 Takoma Park, Maryland 20912



Furniture Specifications

FURNITURE ITEM

ITEM: D01R

Desking System Right Orientation

PHOTO

Image similar to product specified, see item for details



MANUFACTURER

Haworth

QUANTITY

2

MODEL NO.

Refer To Item Description

COST

\$0.00

EXTENDED COST

\$0.00

DESCRIPTION

Haworth Masters Series Desking System, Overall Dimensions: 8'6"L x 5'10"W'; Height Adjustable Table Desk Rectangular Top T-Leg Base, Overall Dimensions: 30" D x 46"W 27-46"H; includes top, two T-leg base assemblies, wire management clips, height adjustment mechanism and hardware. Laminate worksurface with 3mm edgeband applied to user and visitor edges only. Ends capped with 1mm thick edgeband. Glides have .5" height adjustment and are standard in black. Return, 6'W x 2'D; with 19"W B/B/F and 19"W FF cabinet. . File drawers with an integrated file hanging system. Drawer pulls are bar pulls painted silver/gray. Overhead Storage Units - 1H with Hinged Doors, Overall Dimensions: 1"H x 14'D x 72"W; Includes storage cabinets with hinged doors, 2" integrated light valance and 4" French cleat with anti-dislodgement feature. Master Series Attached Storage Units, Overall Dimensions: 28"H x 23" Open Depth x 23.75" Finish Back Depth x 30"W; Includes unfinished top, full finished back, adjustable shelf for unit and attachment hardware. Tackboards – Wall Mount Overhead Storage Units- Fabric, should be L5-AR Dance, Overall Dimensions: 22"H x 72"W; Partial High Modesty Panel: Overall Dimensions: 42"W 13"H; Masters Series Combination Units with Lateral File, Overall Dimensions: 24"D x 30"W x 69"H; Includes open storage with shelves, wardrobe with chrome coat rod, glides and door complete with concealed hinges. This desk is oriented with the return on the right side.

FINISH / FABRIC A

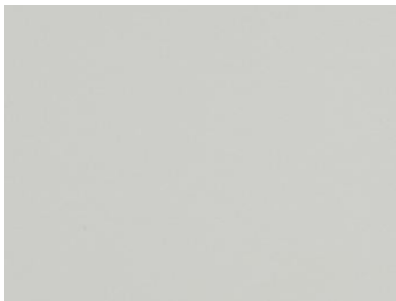
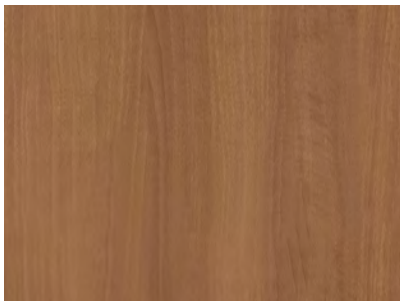
Worksurface Laminate: Brazilwood H-KA

FINISH / FABRIC B

Trim/Metal Accents: Putty TR-AA

FINISH / FABRIC C

Storage Laminate: Patterned Linen Crisp H-P3



QUANTITY/LOCATION:

1/118, 1/120



Takoma Park Library
 101 Philadelphia Avenue
 Takoma Park, Maryland 20912



Furniture Specifications

FURNITURE ITEM

ITEM: D02L

Desking System Left Orientation

PHOTO

Image similar to product specified, see item for details



MANUFACTURER

Haworth

QUANTITY

1

MODEL NO.

Refer To Item Description

COST

\$0.00

EXTENDED COST

\$0.00

DESCRIPTION

Haworth Masters Series Desking System, Overall Dimensions: 8'6"L x 5'10"W'; Height Adjustable Table Desk Rectangular Top T-Leg Base, Overall Dimensions: 30" D x 46"W 27-46"H; includes top, two T-leg base assemblies, wire management clips, height adjustment mechanism and hardware. Laminate worksurface with 3mm edgeband applied to user and visitor edges only. Ends capped with 1mm thick edgeband. Glides have .5" height adjustment and are standard in black. Return, 6'W x 2'D; with 19"W B/B/F and 19"W FF cabinet. . File drawers with an integrated file hanging system. Drawer pulls are bar pulls painted silver/gray. Overhead Storage Units - 1H with Hinged Doors, Overall Dimensions: 1"H x 14'D x 72"W; Includes storage cabinets with hinged doors, 2" integrated light valance and 4" French cleat with anti-dislodgement feature. Master Series Attached Storage Units, Overall Dimensions: 28"H x 23" Open Depth x 23.75" Finish Back Depth x 30"W; Includes unfinished top, full finished back, adjustable shelf for unit and attachment hardware. Tackboards – Wall Mount Overhead Storage Units- Fabric should be L5-AR Dance, Overall Dimensions: 22"H x 72"W; Partial High Modesty Panel: Overall Dimensions: 42"W 13"H; Masters Series Combination Units with Lateral File, Overall Dimensions: 24"D x 30"W x 69"H; Includes open storage with shelves, wardrobe with chrome coat rod, glides and door complete with concealed hinges. This desk is oriented with the return on the left side.

FINISH / FABRIC A

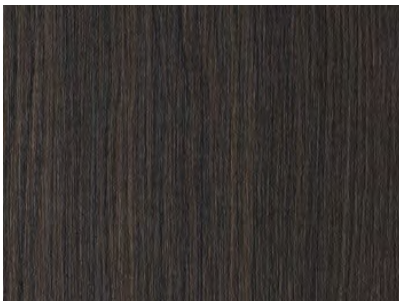
Worksurface Laminate: Columbian
 Walnut H-KG

FINISH / FABRIC B

Trim/Metal Accents: Putty TR-AA

FINISH / FABRIC C

Storage Laminate: Patterned Linen
 Crisp H-P3



QUANTITY/LOCATION:

1/R103



Takoma Park Library
 101 Philadelphia Avenue
 Takoma Park, Maryland 20912



Furniture Specifications

FURNITURE ITEM

ITEM: D02R

Desking System Right Orientation

PHOTO

Image similar to product specified, see item for details



MANUFACTURER

Haworth

QUANTITY

3

MODEL NO.

Refer To Item Description

COST

\$0.00

EXTENDED COST

\$0.00

DESCRIPTION

Haworth Masters Series Desking System, Overall Dimensions: 8'6"L x 5'10"W'; Height Adjustable Table Desk Rectangular Top T-Leg Base, Overall Dimensions: 30" D x 46"W 27-46"H; includes top, two T-leg base assemblies, wire management clips, height adjustment mechanism and hardware. Laminate worksurface with 3mm edgeband applied to user and visitor edges only. Ends capped with 1mm thick edgeband. Glides have .5" height adjustment and are standard in black. Return, 6'W x 2'D; with 19"W B/B/F and 19"W FF cabinet. . File drawers with an integrated file hanging system. Drawer pulls are bar pulls painted silver/gray. Overhead Storage Units - 1H with Hinged Doors, Overall Dimensions: 1"H x 14'D x 72"W; Includes storage cabinets with hinged doors, 2" integrated light valance and 4" French cleat with anti-dislodgement feature. Master Series Attached Storage Units, Overall Dimensions: 28"H x 23" Open Depth x 23.75" Finish Back Depth x 30"W; Includes unfinished top, full finished back, adjustable shelf for unit and attachment hardware. Tackboards – Wall Mount Overhead Storage Units- Fabric, should be L5-AR Dance, Overall Dimensions: 22"H x 72"W; Partial High Modesty Panel: Overall Dimensions: 42"W 13"H; Masters Series Combination Units with Lateral File, Overall Dimensions: 24"D x 30"W x 69"H; Includes open storage with shelves, wardrobe with chrome coat rod, glides and door complete with concealed hinges. This desk is oriented with the return on the right side.

FINISH / FABRIC A

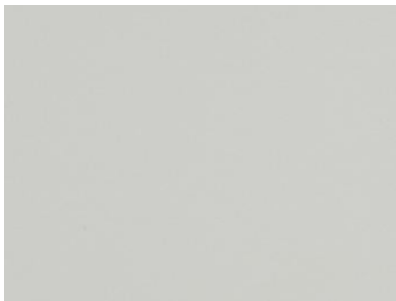
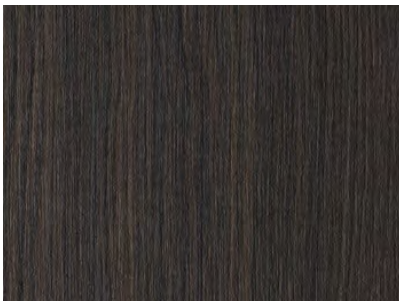
Worksurface Laminate: Columbian
 Walnut H-KG

FINISH / FABRIC B

Trim/Metal Accents: Putty TR-AA

FINISH / FABRIC C

Storage Laminate: Patterned Linen
 Crisp H-P3



QUANTITY/LOCATION:

1/R102, 1/R104, 1/R105



Takoma Park Library
 101 Philadelphia Avenue
 Takoma Park, Maryland 20912



Furniture Specifications

FURNITURE ITEM

ITEM: D03

Workstations

PHOTO

Image similar to product specified, see item for details



MANUFACTURER

Haworth

QUANTITY

10

MODEL NO.

Refer To Item Description

COST

\$0.00

EXTENDED COST

\$0.00

DESCRIPTION

Haworth Compose Workstations, Overall Dimensions 6'D x 7'-6"W; 3" thick full panel frames at 66"H, Non-segmented fabric tiles. Power to be 3 circuits with two triplexes per workstation. Power to run down the spine panels with power located in the base raceway. Two metal attached pedestals, 15"W B/B/F. Metal overhead storage, 60"W, with flipper doors. LED light located below the overhead is not to be shorter than 6" of the overall overhead width. Metal storage tower 24"W x 24"D x 42"H (or 66" if you change the spine height) with full height wardrobe on one side, B/F below and a closed storage shelf above. 30"W x 24"D laminate worksurface with wire access to be located under overhead. Electric height adjustable table, 29"D x 70"W. 1 data port to be provided per station. Clamp on power should be provided with 3 receptacles and 2 USB outlets. Panel fabric should be Grade A material.

FINISH / FABRIC A

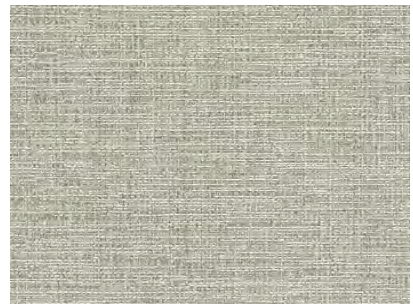
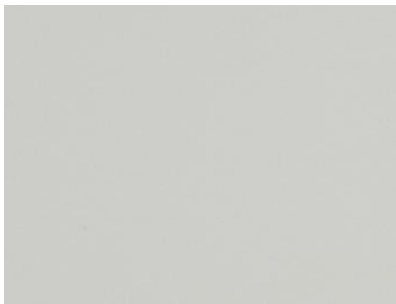
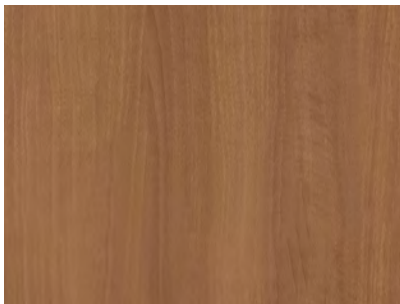
Worksurface Laminate: Brazilwood H-KA

FINISH / FABRIC B

Trim/Metal Accents: Putty TR-AA

FINISH / FABRIC C

Panel Fabric: L5-AR Dance



QUANTITY/LOCATION:

8/116, 2/127



Takoma Park Library
 101 Philadelphia Avenue
 Takoma Park, Maryland 20912



Furniture Specifications

FURNITURE ITEM

ITEM: D04

Workstations

PHOTO

Image similar to product specified, see item for details



MANUFACTURER

Haworth

QUANTITY

6

MODEL NO.

Refer To Item Description

COST

\$0.00

EXTENDED COST

\$0.00

DESCRIPTION

Haworth Compose Workstations, Overall Dimensions 6'D x 7'-6"W; 3" thick full panel frames at 66"H, Non-segmented fabric tiles. Power to be 3 circuits with two triplexes per workstation. Power to run down the spine panels with power located in the base raceway. Two metal attached pedestals, 15"W B/B/F. Metal overhead storage, 60"W, with flipper doors. LED light located below the overhead is not to be shorter than 6" of the overall overhead width. Metal storage tower 24"W x 24"D x 42"H (or 66" if you change the spine height) with full height wardrobe on one side, B/F below and a closed storage shelf above. 30"W x 24"D laminate worksurface with wire access to be located under overhead. Electric height adjustable table, 29"D x 70"W. 1 data port to be provided per station. Clamp on power should be provided with 3 receptacles and 2 USB outlets. Panel fabric should be Grade A material.

FINISH / FABRIC A

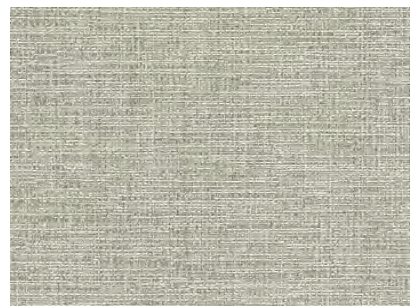
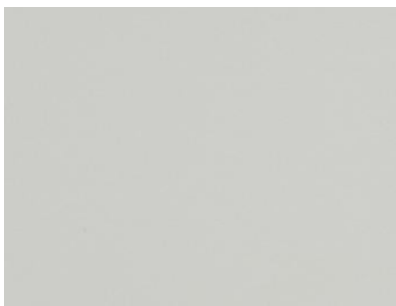
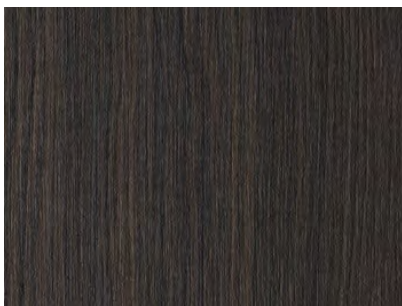
Worksurface Laminate: Columbian
 Walnut H-KG

FINISH / FABRIC B

Trim/Metal Accents: Putty TR-AA

FINISH / FABRIC C

Panel Fabric: L5-AR Dance



QUANTITY/LOCATION:

6/R101



Takoma Park Library
 101 Philadelphia Avenue
 Takoma Park, Maryland 20912



Furniture Specifications

FURNITURE ITEM
Display Case

ITEM: M01

PHOTO

Image similar to product specified, see item for details



MANUFACTURER

Agati

QUANTITY

1

MODEL NO.

Refer To Item Description

COST

\$0.00

EXTENDED COST

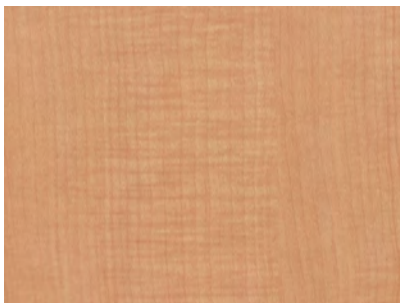
\$0.00

DESCRIPTION

Agati, Display Case, Overall Dimensions: 50"D x 50"W x 42"H; 3-Tiered Square Display Case.

FINISH / FABRIC A

Laminate: Monticello Maple



QUANTITY/LOCATION:

1/110



Takoma Park Library
 101 Philadelphia Avenue
 Takoma Park, Maryland 20912



Furniture Specifications

FURNITURE ITEM

ITEM: S01

Bookcase

PHOTO

Image similar to product specified, see item for details



MANUFACTURER

KI, Inc.

QUANTITY

1

MODEL NO.

RKB361836

COST

\$0.00

EXTENDED COST

\$0.00

DESCRIPTION

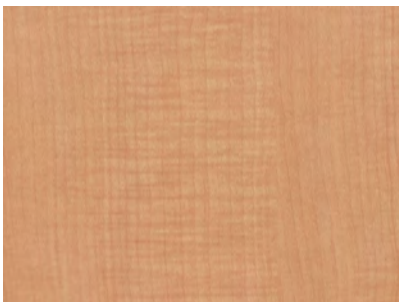
KI, Ruckus Single-Face Bookcase Unit with Adjustable Shelves, Overall Dimensions: 36"W x 18"D x 36"H; Laminate top (1-1/4" with 74p edge), single sided storage bookcase unit. The bookcase unit has 3 compartments total on the open side. The unit ships assembled; the bookcase is on casters that are installed in the field. The shelves adjust in 1" increments without tools. The laminate worksurfaces are 1-1/4" thick and consist of a particleboard core with a HPL surface. 74P (2 mm PVC-free) banding is applied to the edges. All tops are pre-drilled for mounting of end panels, center dividers and are assembled in the factory. The 1-1/8" thick base ties together the vertical panels creating the bottom and complete structure. Bases are 18-gauge steel. Each base also contains an 18-gauge reinforcement strip on the front and back side of the base bottom. Each reinforcement strip is spot welded in place. Each strip consists of two 1/2" weld nuts on each end to accept the caster. The storage unit is on casters. All caster bodies are twin-wheel hooded design with 2-3/4" diameter wheels. All four casters swivel and two casters have a lock. The casters are black. All shelves are 3/4" thick with flanges, front and back, constructed of 22-gauge material. Each cubby fixed shelf is screw mounted in four places with #10 screws into the outer panel and center panel to create separation between modules. Each bookcase unit features two adjustable shelves per section which can be adjusted in 1" increments. The shelves are mounted in two places, with adjustable shelf brackets into the outer panel, to create separation between modules.

FINISH / FABRIC A

Top Laminate: Monticello Maple

FINISH / FABRIC B

Paint: Cool Grey



QUANTITY/LOCATION:

1/110



Takoma Park Library
 101 Philadelphia Avenue
 Takoma Park, Maryland 20912



Furniture Specifications

FURNITURE ITEM
Shelving

ITEM: S02

PHOTO

Image similar to product specified, see item for details



MANUFACTURER

ULINE

QUANTITY

5

MODEL NO.

H-2940-72

COST

\$0.00

EXTENDED COST

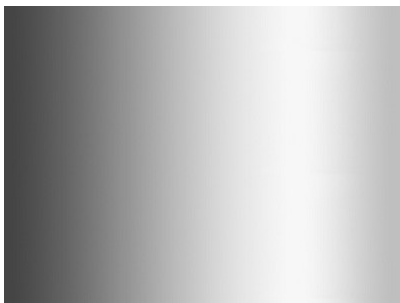
\$0.00

DESCRIPTION

Uline, 72" Height Chrome Wire Shelving, Overall Dimensions: 36"W x 18"D x 72"H; The wire shelving adjusts in 1" increments. They assemble the shelving in minutes, no tools required.

FINISH / FABRIC A

Finish: Steel



QUANTITY/LOCATION:

5/R101



Takoma Park Library
 101 Philadelphia Avenue
 Takoma Park, Maryland 20912



Furniture Specifications

FURNITURE ITEM
Occasional Table

ITEM: T01

PHOTO

Image similar to product specified, see item for details



MANUFACTURER

Kimball Office

QUANTITY

7

MODEL NO.

K3436SSQ-K34BG26497

COST

\$0.00

EXTENDED COST

\$0.00

DESCRIPTION

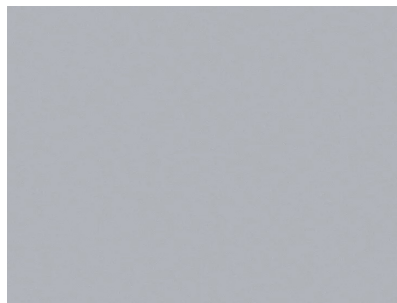
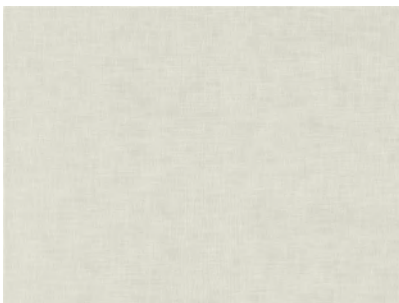
Kimball, Theo Table, Overall Dimensions: 36"D x 35"W x 25"H; Table has a soft square top and the top and rim material are TFL with a vinyl edge band. The base is polished aluminum, and the table sits on nylon glides.

FINISH / FABRIC A

Top Laminate: Crisp Linen 818

FINISH / FABRIC B

Frame: Silver Pearl Metallic



QUANTITY/LOCATION:

6/109, 1/121



Takoma Park Library
 101 Philadelphia Avenue
 Takoma Park, Maryland 20912



Furniture Specifications

FURNITURE ITEM
Fixed Height Table

ITEM: T02

PHOTO

Image similar to product specified, see item for details



MANUFACTURER

KI, Inc.

QUANTITY

21

MODEL NO.

PIFR2460T

COST

\$0.00

EXTENDED COST

\$0.00

DESCRIPTION

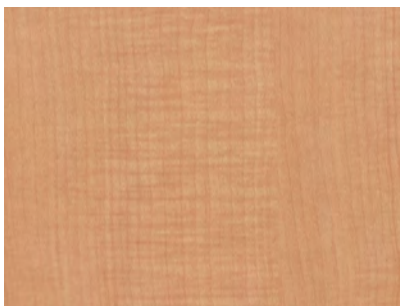
KI, Pirouette Table, Overall Dimensions: 24"W x 60"L x 29"H; steel tubing frame with table latch release on underside of table for nesting storage, tabletop made of particle board with .030" thick high-pressure laminate and .028" phenolic backer bottom surface and 2mm edge. Leg construction consists of 2.2" diameter, .10"thick wall steel tubing with a 5 mm thick steel plate welded to it. The feet consist of two 4 mm thick blades welded to the leg tube. The blade covers are aluminum die cast, attached with self-tapping metal screws. The leg assemblies are attached to the tabletops using #12 x 1" screws. The tables have casters, each table will include two-wheel locking casters. Casters are made of molded nylon and are two-tone. Caster wheels are a minimum of 2.44" (62 mm) diameter. Caster wheel treads are medium hard (75 max Shore A) for easy mobility on carpet or hard floors.

FINISH / FABRIC A

Top Laminate: Monticello Maple

FINISH / FABRIC B

Frame: Starlight Silver



QUANTITY/LOCATION:

19/106, 2/128



Takoma Park Library
 101 Philadelphia Avenue
 Takoma Park, Maryland 20912



Furniture Specifications

FURNITURE ITEM
Gathering Table

ITEM: T03

PHOTO

Image similar to product specified, see item for details



MANUFACTURER

KI, Inc.

QUANTITY

6

MODEL NO.

SEGS3060L

COST

\$0.00

EXTENDED COST

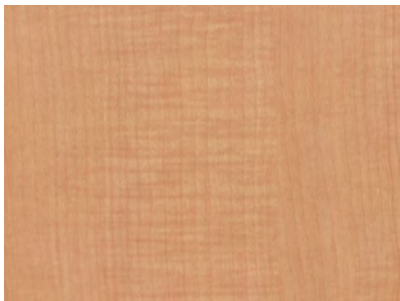
\$0.00

DESCRIPTION

KI, Serenade Table, Overall Dimensions: 30"D x 60"W x 29"H; tabletops are constructed of 2" thick, 45 lb density particle board core with 1/32" laminate finished top surface and 1/32" thick phenolic backing. End panels are constructed of 2"thick, 45 lb density particle board finished with 1/32" laminate on both the front and back surface. The ends are finished with 1/32" Self Edge or matching laminate. The bottom is finished with black laminate. Tables contain an 18" wide leg that is placed directly in the middle of the table construction to allow user clearance on both sides of that is placed directly in the middle of the table construction to allow user clearance on both sides of the table. Adjustable glides are 1" diameter, 5/16"-18 threaded floor glides and offer 1-1/2" of adjustability. These panel structures are secured to the tabletop with hardware and 9-gauge steel mounting plates. PowerUp module with 3-prong plug is centered from the front edge to back on the tabletop.

FINISH / FABRIC A

Laminate: Monticello Maple



QUANTITY/LOCATION:

6/110



Takoma Park Library
 101 Philadelphia Avenue
 Takoma Park, Maryland 20912



Furniture Specifications

FURNITURE ITEM
Gathering Table

ITEM: T04

PHOTO

Image similar to product specified, see item for details



MANUFACTURER

KI, Inc.

QUANTITY

4

MODEL NO.

SEGS4872L

COST

\$0.00

EXTENDED COST

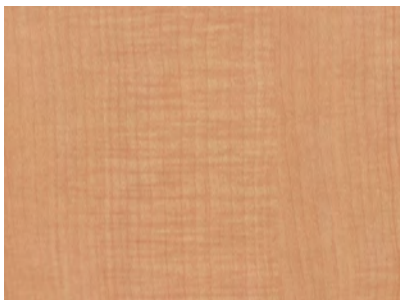
\$0.00

DESCRIPTION

KI, Serenade Table, Overall Dimensions: 48"D x 72"W x 42"H; tabletops are constructed of 2" thick, 45 lb density particle board core with 1/32" laminate finished top surface and 1/32" thick phenolic backing. End panels are constructed of 2"thick, 45 lb density particle board finished with 1/32" laminate on both the front and back surface. The ends are finished with 1/32" Self Edge or matching laminate. The bottom is finished with black laminate. Tables contain an 18" wide leg that is placed directly in the middle of the table construction to allow user clearance on both sides of that is placed directly in the middle of the table construction to allow user clearance on both sides of the table. Adjustable glides are 1" diameter, 5/16"-18 threaded floor glides and offer 1-1/2" of adjustability. These panel structures are secured to the tabletop with hardware and 9-gauge steel mounting plates. PowerUp module with 3-prong plug is centered from the front edge to back on the tabletop. Tables are fitted with 11 3/4" tall (on 42" models) stringers or full-height modesty panels. These stringers and modesty panels are constructed of 1" thick, 45 lb. density particle board core finished with 1/32" laminate on both the front and back surface. These panel structures are secured to the tabletop with hardware and 9-gauge steel mounting plates.

FINISH / FABRIC A

Laminate: Monticello Maple



QUANTITY/LOCATION:

4/110



Takoma Park Library
 101 Philadelphia Avenue
 Takoma Park, Maryland 20912



Furniture Specifications

FURNITURE ITEM
Gathering Table

ITEM: T05

PHOTO

Image similar to product specified, see item for details



MANUFACTURER

KI, Inc.

QUANTITY

6

MODEL NO.

SEGS3684L

COST

\$0.00

EXTENDED COST

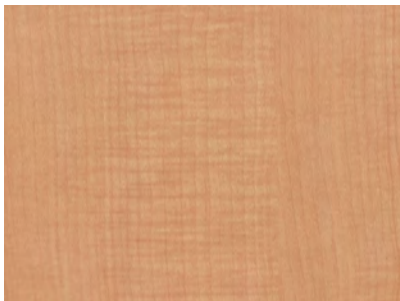
\$0.00

DESCRIPTION

KI, Serenade Table, Overall Dimensions: 36"D x 84"W x 29"H; tabletops are constructed of 2" thick, 45 lb density particle board core with 1/32" laminate finished top surface and 1/32" thick phenolic backing. End panels are constructed of 2"thick, 45 lb density particle board finished with 1/32" laminate on both the front and back surface. The ends are finished with 1/32" Self Edge or matching laminate. The bottom is finished with black laminate. Tables contain an 18" wide leg that is placed directly in the middle of the table construction to allow user clearance on both sides of that is placed directly in the middle of the table construction to allow user clearance on both sides of the table. Adjustable glides are 1" diameter, 5/16"-18 threaded floor glides and offer 1-1/2" of adjustability. These panel structures are secured to the tabletop with hardware and 9-gauge steel mounting plates. PowerUp module with 3-prong plug is centered from the front edge to back on the tabletop.

FINISH / FABRIC A

Laminate: Monticello Maple



QUANTITY/LOCATION:

6/110



Takoma Park Library
 101 Philadelphia Avenue
 Takoma Park, Maryland 20912



Furniture Specifications

FURNITURE ITEM
Round Table

ITEM: T06

PHOTO

Image similar to product specified, see item for details



MANUFACTURER

KI, Inc.

QUANTITY

6

MODEL NO.

SMFT2203/L

COST

\$0.00

EXTENDED COST

\$0.00

DESCRIPTION

KI, Soltice Metal Round Lamp Table, Overall Dimensions: 24"DIA x 22"H; base has welded steel construction consisting of 3/4" x 1-1/2" x 16 gauge rectangular steel tubing legs and 11 gauge steel spider plate; base is mounted to underside using wood screws; 1" thick plastic laminate table top glued over 45 lb. density particle board; 1/32" phenolic backer is laminated on underside for balanced laminate construction and helps moisture absorption in the core material; flat polymer edge band; steel components are powder coat painted; glides are press-fit nylon type 6.

FINISH / FABRIC A

Laminate: Monticello Maple

FINISH / FABRIC B

Frame: Starlight Silver



QUANTITY/LOCATION:

1/113 , 1/109, 2/110, 2/130



Takoma Park Library
 101 Philadelphia Avenue
 Takoma Park, Maryland 20912



Furniture Specifications

FURNITURE ITEM

ITEM: T07

Training Table

PHOTO

Image similar to product specified, see item for details



MANUFACTURER

Kimball

QUANTITY

2

MODEL NO.

35K3072FSTRFNTM

COST

\$0.00

EXTENDED COST

\$0.00

DESCRIPTION

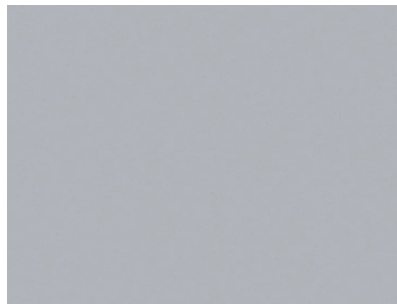
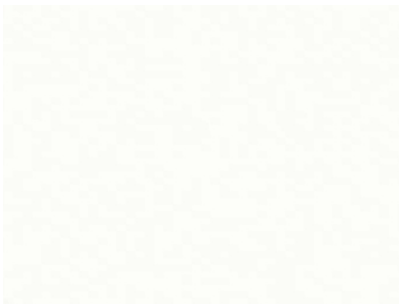
Kimball, Everyspace Table, Overall Dimensions: 30"D x 72"W x 29"H; worksurface with rectangular corners and pre-drilled pilot holes for leg attachment. The legs are fixed-height and have an angled leg base. The undersurface has a black support rail. The tables legs are on standard glides.

FINISH / FABRIC A

Laminate: Designer White

FINISH / FABRIC B

Frame: Silver Pearl Metallic



QUANTITY/LOCATION:

1/111, 1/112



Takoma Park Library
 101 Philadelphia Avenue
 Takoma Park, Maryland 20912



Furniture Specifications

FURNITURE ITEM

ITEM: T08

End Table

PHOTO

Image similar to product specified, see item for details



MANUFACTURER

KI, Inc.

QUANTITY

4

MODEL NO.

ZYT2222T

COST

\$0.00

EXTENDED COST

\$0.00

DESCRIPTION

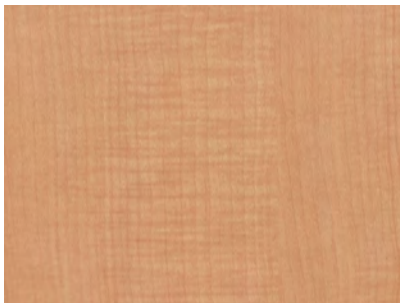
KI, Zoetry End Table, Overall Dimensions: 22"W x 22"D x 15"H, Freestanding Laminate tabletop, with 14" die-cast aluminum leg, the aluminum base is extruded. Tabletops are constructed using 45 lb. density particleboard with .030" thick high-pressure laminate, .030" high-pressure backer and 2 mm pvc edge banding (KI "73P" edge banding). The overall top thickness is 3/4".

FINISH / FABRIC A

Top Laminate: Monticello Maple

FINISH / FABRIC B

Frame: Starlight Silver



QUANTITY/LOCATION:

2/110, 2/129



Takoma Park Library
 101 Philadelphia Avenue
 Takoma Park, Maryland 20912



Furniture Specifications

FURNITURE ITEM
Multipurpose Table

ITEM: T09

PHOTO

Image similar to product specified, see item for details



MANUFACTURER

KI

QUANTITY

2

MODEL NO.

TL37ST-74P-4GB

COST

\$0.00

EXTENDED COST

\$0.00

DESCRIPTION

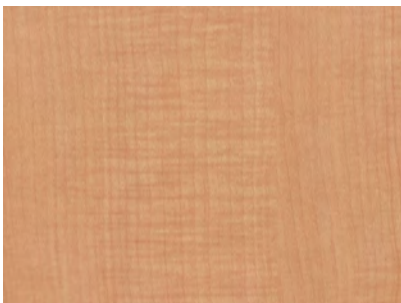
KI, Trek Table, Overall Dimensions: 36"D x 84"W x 29"H; Bases are built of 2 1/2", 14-gauge round tubular steel leg column with steel end cap and 16-gauge steel tapered legs elliptically swagged down to 1" diameter at end; highly durable, smooth powder-coated finish. Adjustable glides are secured to the legs. 1 1/8" thick high-density particleboard core with high-pressure laminate top and phenolic backing sheet. Tops are pre-drilled. Total dimension is 1 1/4".

FINISH / FABRIC A

Top/Edge Laminate: Monticello Maple

FINISH / FABRIC B

Frame: Starlight Silver



QUANTITY/LOCATION:

2/129



Takoma Park Library
 101 Philadelphia Avenue
 Takoma Park, Maryland 20912



Furniture Specifications

FURNITURE ITEM
Multipurpose Table

ITEM: T10

PHOTO

Image similar to product specified, see item for details



MANUFACTURER

KI, Inc.

QUANTITY

2

MODEL NO.

AH3R30ACH-74P

COST

\$0.00

EXTENDED COST

\$0.00

DESCRIPTION

KI, Athens Table, Overall Dimensions: 30"W x 27"-44-3/4"H, The table is height adjustable. The table has a tapered round pedestal base that is 22" in diameter and is constructed of a spun 0.7" thick steel cover over a 1/4" thick round disk. Pneumatic adjustable column assembly is constructed of a 70mm diameter, 14-gauge lower tube and a 63mm diameter, 14-gauge upper tube, and allows table height adjustment from 26-3/8" to 44". Laminate table tops feature a 1-1/8" thick high-density particleboard core with high-pressure laminate top and phenolic backing sheet.

FINISH / FABRIC A

Top/Edge Laminate: Monticello Maple

FINISH / FABRIC B

Frame:Chrome



QUANTITY/LOCATION:

2/130



Takoma Park Library
 101 Philadelphia Avenue
 Takoma Park, Maryland 20912



Furniture Specifications

FURNITURE ITEM
Conference Table

ITEM: T11

PHOTO

Image similar to product specified, see item for details



MANUFACTURER

KI, Inc.

QUANTITY

1

MODEL NO.

CZBTCCR4896-74P-NCS-N

COST

\$0.00

EXTENDED COST

\$0.00

DESCRIPTION

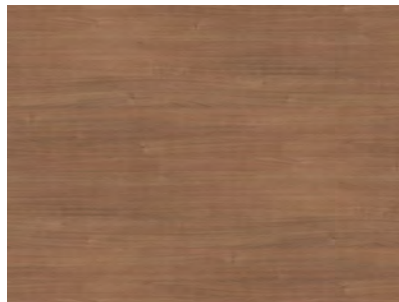
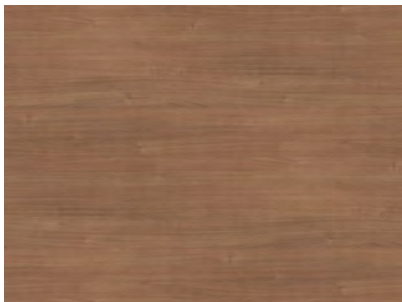
KI, Connection Zone Wood Leg Conference Table, Overall Dimensions: 47.5"D x 95.5"W x 29"H, Worksurfaces are constructed of 1-1/8" thick, 45-pound density particleboard core. Adhered on the top is a 0.30" face sheet of high-pressure laminate and on the bottom with a .030" phenolic backer. Total worksurface thickness is 1-1/4" thick. Edges are evenly adhered to the worksurface. All worksurfaces are pre-drilled for support brackets and support legs. Frames are offered for dual-sided benching applications, desks, and conference tables. Dual-sided benching frames support pairs of worksurfaces. The table is supported by a single beam frame, and support a single top.

FINISH / FABRIC A

Top Laminate: River Cherry

FINISH / FABRIC B

Frame: River Cherry



QUANTITY/LOCATION:

1/119



Takoma Park Library
 101 Philadelphia Avenue
 Takoma Park, Maryland 20912



Furniture Specifications

FURNITURE ITEM

ITEM: T12

Round Ottoman Table

PHOTO

Image similar to product specified, see item for details



MANUFACTURER

KI, Inc.

QUANTITY

2

MODEL NO.

MPT26R/CGL/NC

COST

\$0.00

EXTENDED COST

\$0.00

DESCRIPTION

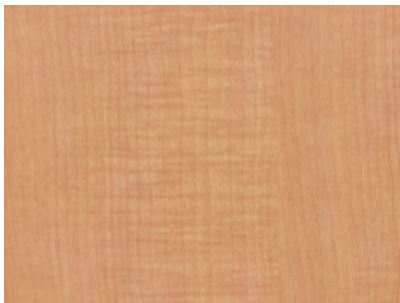
KI, MyPlace Round Ottoman Table, Overall Dimensions: Diameter: 26", Overall Height: 18", Seat Height: 18"; The table comes with concealed glides that are height adjustable steel, 1/4-20 threaded with a natural color nylon bottom. The tabletops are made up of a high-pressure laminate surface that is glued to a 45 lb density particleboard core. The underside of the top and core is a 1/32" phenolic backer laminate.

FINISH / FABRIC A

Laminate: Monticello Maple

FINISH / FABRIC B

Seat: Pallas Deja Vu Glimpse



QUANTITY/LOCATION:

2/113



Takoma Park Library
 101 Philadelphia Avenue
 Takoma Park, Maryland 20912



Furniture Specifications

FURNITURE ITEM
Occasional Table

ITEM: T13

PHOTO

Image similar to product specified, see item for details



MANUFACTURER

Kimball Office

QUANTITY

5

MODEL NO.

83N3636SSQLL-CBV2728XBP

COST

\$0.00

EXTENDED COST

\$0.00

DESCRIPTION

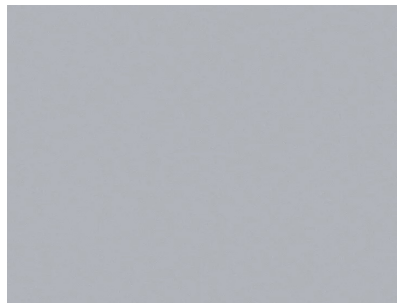
Kimball, Soft Square Footings Table with X Base at Work Surface Height, Overall Table Top Dimensions: 36"W x 36"D; Overall X Base Dimensions: 27-1/4"D x 27-1/4"W x 27-13/16"H; Table has a soft square top and softened rim and material are TFL with a vinyl edge band. The base is polished aluminum, and the table sits on nylon glides. The tabletop thickness is 1-3/16".

FINISH / FABRIC A

Top Laminate: Crisp Linen 818

FINISH / FABRIC B

Frame: Silver Pearl Metallic



QUANTITY/LOCATION:

2/113 , 3/129



Takoma Park Library
 101 Philadelphia Avenue
 Takoma Park, Maryland 20912



Furniture Specifications

FURNITURE ITEM
Round Table

ITEM: T14

PHOTO

Image similar to product specified, see item for details



MANUFACTURER

KI, Inc.

QUANTITY

3

MODEL NO.

AH3R36ACH-74P

COST

\$0.00

EXTENDED COST

\$0.00

DESCRIPTION

KI, Athens Table, Overall Dimensions: 36"W x 27"-44-3/4"H, The table is height adjustable. The table has a tapered round pedestal base that is 22" in diameter and is constructed of a spun 0.7" thick steel cover over a 1/4" thick round disk. Pneumatic adjustable column assembly is constructed of a 70mm diameter, 14-gauge lower tube and a 63mm diameter, 14-gauge upper tube, and allows table height adjustment from 26-3/8" to 44". Laminate table tops feature a 1-1/8" thick high-density particleboard core with high-pressure laminate top and phenolic backing sheet.

FINISH / FABRIC A

Top/Edge Laminate: Monticello Maple

FINISH / FABRIC B

Frame:Chrome



QUANTITY/LOCATION:

3/130

Attachment 3: Furniture plan

EQUIPMENT NOTES

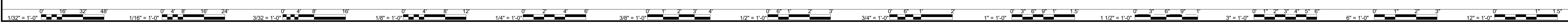
- MIRROR & WALL MANUFACTURERS / INSTALLER SHALL MEASURE FIELD CONDITIONS & PROVIDE CUTOUTS AT ALL WALL OUTLETS & OTHER INFRASTRUCTURE AS REQUIRED.
- ALL ITEMS IN THIS EQUIPMENT SCHEDULE ARE IN CONTRACT AND SHALL BE PURCHASED AND INSTALLED BY THE CONTRACTOR
- FURNITURE SHOWN IN DASHED LINES IS NOT IN THE CONSTRUCTION CONTRACT
- MARKER BOARDS / TACK BOARDS ARE TAGGED FOR WIDTH ONLY. REFER TO INTERIOR ELEVATIONS FOR HEIGHT REQUIREMENTS.

EQUIPMENT SCHEDULE			
KEYNOTE #	DESCRIPTION	MANUFACTURER	TYPE COMMENTS
E01	REFRIGERATOR	GE	MODEL # PFE28KYNFS; COLOR: SLATE; 36"W x 36"D
E02	MICROWAVE OVEN	GE	MODEL # PS9240SFSS; COLOR: SLATE 30"W
E03	BOOK DROP CART	KINGSLEY	DURALIGHT MODEL#44; 25 7/16"W x 28 5/8"D x 25 1/2"H
E04	TV MONITOR		SEE LOW VOLTAGE DESIGN DRAWINGS
E05	RECYCLING BIN	ULINE	MODEL # H-2181 WITH H-2182 LID
E06	UNDERCOUNTER ICE MAKER	Ice O Matic	MODEL # UCG100A



FURNITURE PLAN - MAIN LEVEL

SCALE: 1/8" = 1'-0"



PERMIT COMMENTS 1	DESCRIPTION
08/27/2021	BY
MARK	DATE
REVISIONS	

Professional Certification: I certify that these documents were prepared or approved by me, and that I am a duly licensed architect under the laws of the State of Maryland, license number 18837 - expiration date 12/31/2022

DATE	PROJECT	DESIGNED	DRAWN	CHECKED
2/20/2024	13326-02	GSL	AW/RK	KDL



CITY OF TAKOMA PARK
 TAKOMA PARK MARYLAND LIBRARY REPLACEMENT
 101 PHILADELPHIA AVENUE, TAKOMA PARK, MD 20912
 FURNITURE & EQUIPMENT PLAN - MAIN LEVEL

SHEET
A-901

8/2/2024 2:47:34 PM B:\360\13326-02 Takoma Park Replacement Library\13326-02 2D TPL - ARCH.rvt